

CARE AND USE INSTRUCTIONS

**CEETSS-3028
CEETSS-3029**

Before Installation:

Read this instruction carefully before starting installation.

Proper tools will improve the quality of installation and reduce the time required.

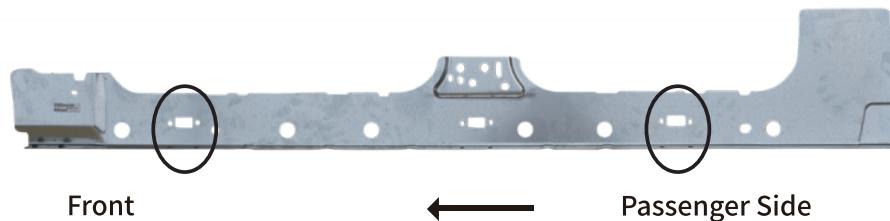
If missing parts or any damage found, please take a picture and contact us.

Professional installation would be highly recommended.

Periodic check to ensure all mounting hardware remains secure and tight.

Step 1:

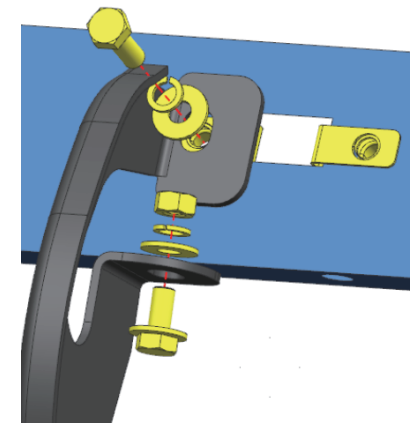
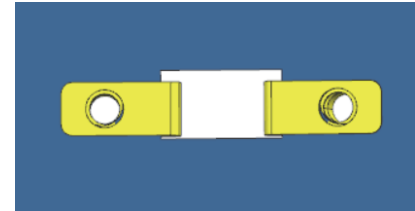
1. Locate (2) mounting positions each side.
2. Remove the factory tape and clean the dirt around mounting positions.



CARE AND USE INSTRUCTIONS

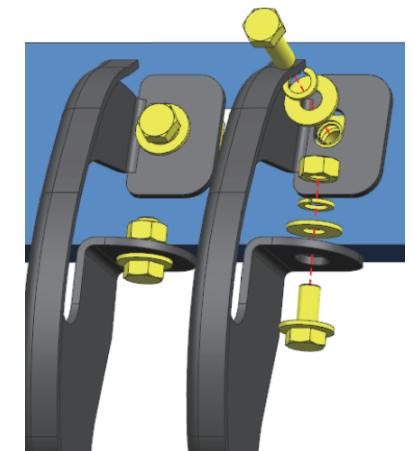
Step 2:

1. Insert (2) M8 clip nuts onto square holes on the inner rocker panel. (Insert M8 clip nut onto the square hole and over the smaller hole next to it).
2. Attach the bracket to the inner rocker panel (the vehicle front side first).
3. Secure the bracket on the rocker panel with (1) M8 hex bolt, (1) M8 lock washer, (1) M8 flat washer.
4. Secure the bracket on the pinch weld with (1) M8 hex bolt, (1) M8 lock washer, (2) M8 flat washers, (1) M8 hex nut.



Step 3:

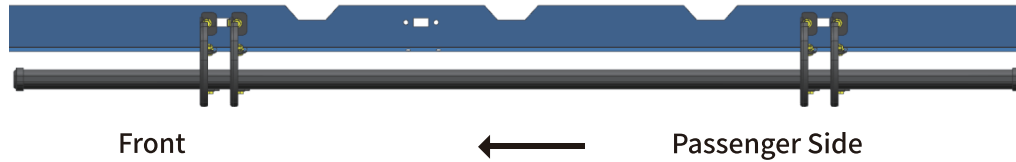
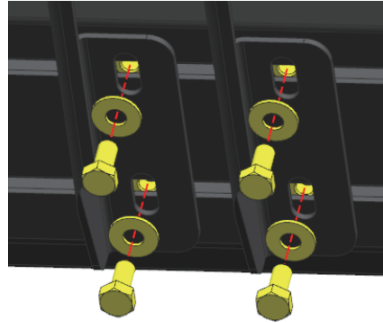
1. In same mounting position, attach another bracket to the mounting hole next to the first bracket.
2. Secure the bracket on the rocker panel with (1) M8 hex bolt, (1) M8 lock washer, (1) M8 flat washer.
3. Secure the bracket on the pinch weld with (1) M8 hex bolt, (1) M8 lock washer, (2) M8 flat washers, (1) M8 hex nut.
4. Repeat the step 2 and the step 3 to install all brackets.



CARE AND USE INSTRUCTIONS

Step 4:

1. Remove (8) M8 hex bolts and (8) M8 flat washers from the step bar.
2. Slide the mounting tracks to proper positions.
3. With assistance, lift and attach the step bar to brackets.
Secure the step bar on brackets with (8) M8 hex bolts and (8) M8 flat washers.
4. Repeat to install the other side step bar, do not fully tighten.



Step 5:

1. Tighten M8 hex bolts and nuts on vehicle with 15 ft-lbs. torque.
2. Adjust the step bar to level and tighten M8 hex bolts with 15 ft-lbs. torque.
3. After the step bar installed, periodic check to ensure all mounting hardware remains secure and tight.

CARE AND USE INSTRUCTIONS

Part List:

	Qty.	Description
①	×4	Driver Side Bracket
②	×4	Passenger Side Bracket
③	×16	M8 Hexagon Flange Bolt
④	×32	M8 Flat Washer
⑤	×16	M8 Lock Washer
⑥	×16	M8 Hexagon Nut
⑦	×8	M8 Clip Nut
Pre-Installed on Step Bar		
⑧	×16	M8 Hexagon Flange Bolt
⑨	×16	M8 Flat Washer

