

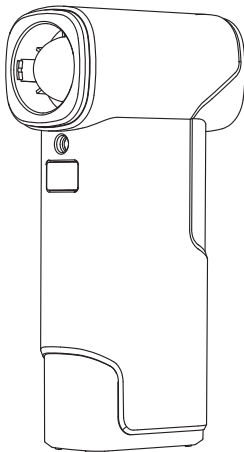
Fanttik

B10 Pro Max

Electric Air Duster

User Manual

Please read this instruction manual carefully before use and keep it for future reference.



Contents

1. Safety Warnings	02
2. Package Contents	05
3. Product Overview	06
4. How to Use	07
5. Specifications	09

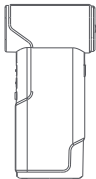
1.Safety Warnings

- Avoid moisture, dust, and drop.
- Do not store the product in extreme temperature environment.
- Stay alert, watch what you are doing and use common sense when operating. Do not operate while you are tired or under the influence of drugs, alcohol, or medication.
- This product is not a toy and should not be used by kids under 7 years old.
- This product has built-in battery, do not throw it into fire and should be recycled by local laws and regulations.
- Do not dismantle the machine by yourself. Have your power tool serviced by a qualified repair person or contact us for advice.

- Do not use with wet hands.
- Do not place this product in a splashing or soaking environment.
- Do not insert foreign objects into the air outlet and air inlet.
- Do not place this product near a heat source (stove or heater, etc.) or in a car on a hot day.
- Do not use it near LPG or other flammables (such as volatile agents, paint thinners, sprays, etc.), otherwise it may cause an explosion or fire.
- Do not block the air inlet and air outlet when the product is working.
- If the product has abnormal noise, odor, high temperature, or abnormal fan blade rotation, please stop using it immediately.
- Do not disassemble the entire product. If it is accidentally disassembled and causes abnormal operation, please contact after-sales service to send it back.
- Do not blow the air flow to the eyes, ears, mouth and other human organs during use.

- Do not store this product where children and pets can reach it.
- Do not use this product in an environment where the temperature is too high or too low.
- Regularly remove the attachments from the air outlet and air inlet.
- Do not press or rub the air outlet and air inlet with your fingernails or sharp objects.
- Do not overcharge or over-discharge the battery, otherwise it will damage the battery.
- Do not press or rub the air inlet and air outlet with your fingernails or sharp objects to avoid damaging the product.
- Do not use alcohol, nail polish remover or detergent to clean this product, otherwise it may cause malfunction, cracking or fading.
- Do not use this product near a bathtub, shower, washbasin or other utensils filled with water

2.Package Contents



B10 Pro Max
Air Duster x 1



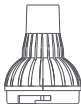
Short blow
nozzle x 1



Swimming ring
blow nozzle x 1



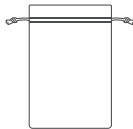
Long blow
nozzle x 1



Air bed blow
nozzle x 1



USB-C
Charging Cable x 1



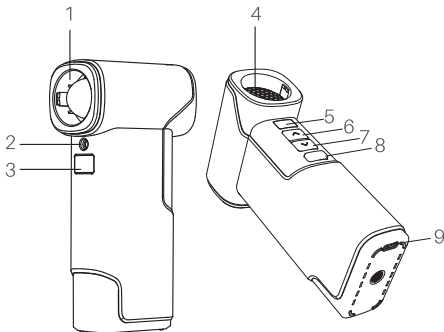
Storage bag x 1



User Manual x 1

3.Product Overview

- 1.air outlet/Connection Port
- 2.Light bulb beads
- 3.Boost Button
- 4.Air inlet
- 5.LED display screen
- 6.Wind speed plus key
- 7.Wind speed reduction key
- 8.On and off key
- 9.USB Type-C Charging Port



4.How to Use

Power On/Off

- Power On: Press and hold the power button for 2 seconds to power on the device.
- Power Off: Press and hold the power button for 2 seconds to shut down the device.

Note: for your safety, the device cannot be turned on while charging.

Turn On/Off the LED Light

- The LED light turns on simultaneously when motor is on.

Display

- Power on

After powering on, the screen displays "1" gear, which changes to the battery level indicator after 5 seconds. When the gear adjustment button is pressed, the screen shows the current gear level (1-5). When the Boost Button is held down, the screen displays "6", and

reverts to showing the current gear level after the Boost Button is released.

- **Charging**

When charging, the charging icon blinks and displays the battery level ranging from 10% to 99%.

- **Discharging**

When discharging, the charging icon remains lit and displays the battery level ranging from 10% to 99%.

- When the battery is charging, the indicator will slowly blink white.
- When the battery is fully charged, the indicator will become solid white.

Use Nozzles

- Other Nozzles: insert other nozzles into the connection port of nozzle, then rotate to align the position marks on both nozzles for complete engagement.
- This device is equipped with a universal USB Type-C charging port and comes with a USB charging cable. Charger is not included, please use a 5V charger for charging.

5.Specifications

Product Name	Electric Air Duster
Product Model	B10 Pro Max
Color	Deep Grey
Product dimension	5.57*2.9*1.55in(141.6*73.7*39.4mm)
Net Weight	0.71lb(322G)
Max. Air speed*	65 m/s
Motor speed (unloaded)	130000RPM
Battery capacity	4000 mAh / 28,8 Wh
Rated Voltage	7,2 V
Charging Input	5V/2A, 9V/2A, 12V/1,5A
Charging time	180min

* Tested by pitot tube anemometer with air duster fully charged, extension nozzle installed and level set on level II.

929-693-6066 MON-FRI 9AM-5PM [ET]

www.fanttik.com

support@fanttik.com

METASEE LLC

12 GREENWAY PLZ STE 1161A HOUSTON, TX 77046-1203

Made in China

