

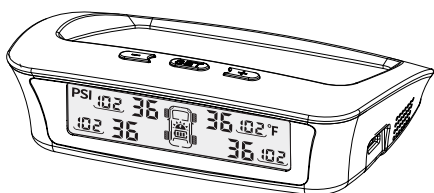
Tymate

Tire pressure monitor system

Model : M12-3

Caution: Must turn on the monitor first and then install the sensors.

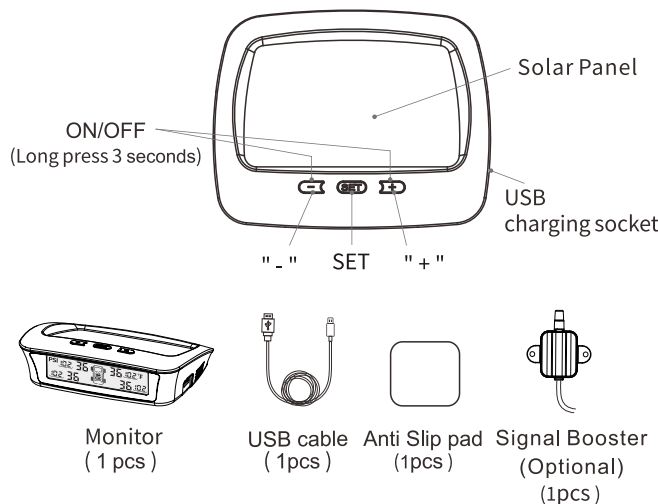
Long press “+” & “-” buttons for 3 seconds to turn on the monitor.



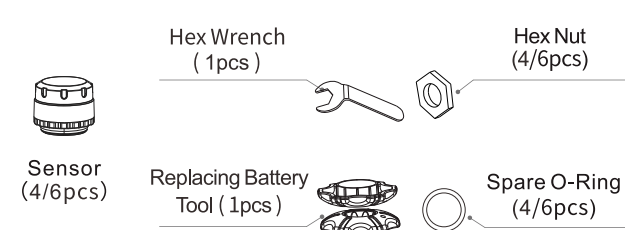
Implementation standards:GB26149-2017

1. Kit Contents

1-1. The monitor and ACC

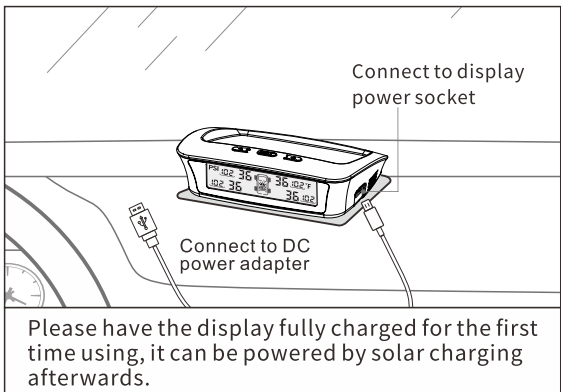
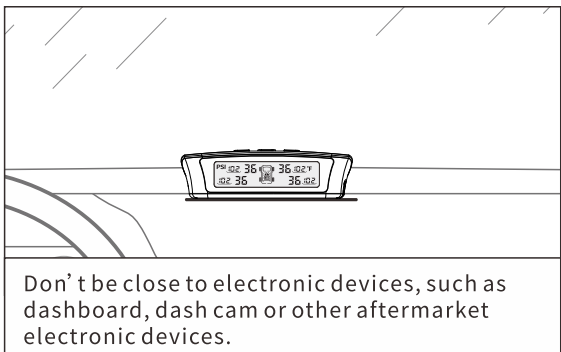


1-2.The sensor and ACC



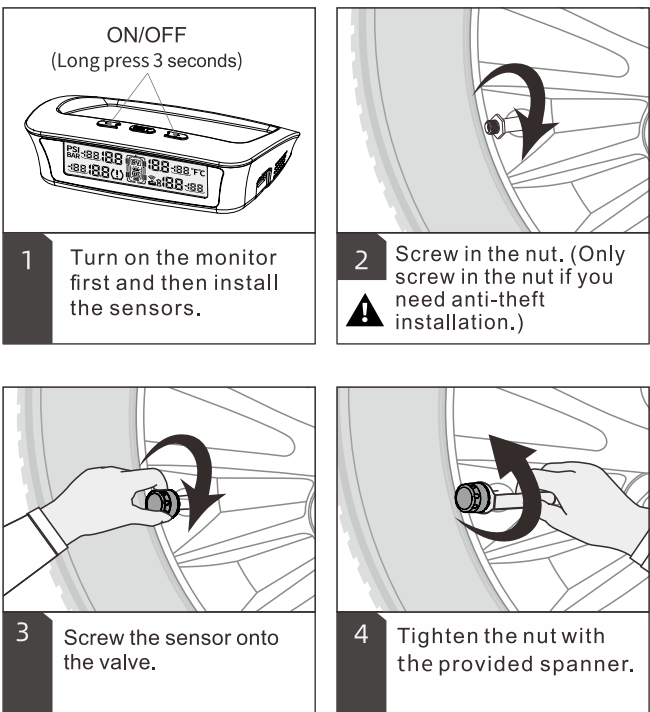
2.Monitor Installation

Turn on the monitor then install the sensors.
Long press “+” & “-” buttons for 3 seconds to turn on the monitor.



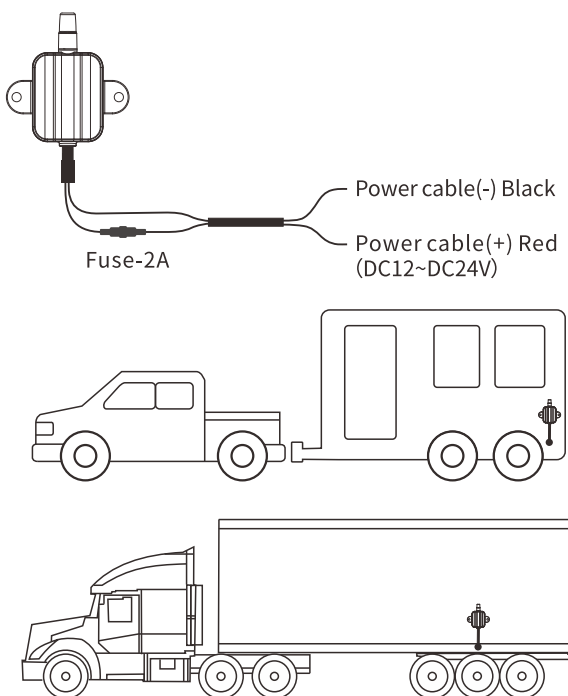
3.Sensor Installation

※**Note:** Before installing the sensor, make sure that the tire pressure is the required air pressure or the standard air pressure.



4.Signal Booster Installation(Optional)

The signal booster needs to install in the middle of the rear axle of the trailer or the RV, and the antenna is exposed without any cover.
The installation is complete after signal booster connecting the power supply and making sure it is installed firmly.



5.Products

Factory default setting	
Reference pressure When the sensor is installed on the tire, the current pressure will become the reference pressure	
Pressure Unit	PSI
Temperature Unit	°F
High temperature alert	158°F

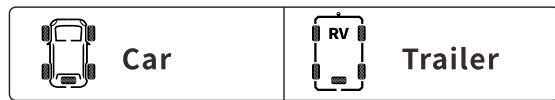
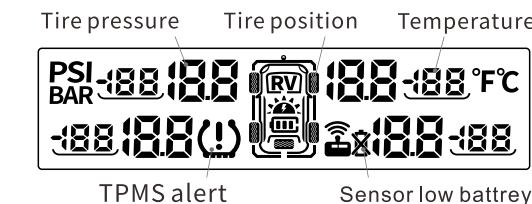
Change unit
In standby mode, press the “+” button for 3 seconds to switch the tire pressure unit PSI/BAR.
In standby mode, press the “-” button for 3 seconds to switch the tire temperature unit °F/°C.

Switch display to view front vehicle /spare tire / trailer / spare tire (Note:This function is only available when the trailer/spare tire sensors are installed.)
Press the “+” or “-” buttons in standby mode.

Reference pressure set automatically
When the sensor is installed, the current tire pressure will become the reference pressure.
When the tire pressure is 25% higher than the reference pressure, monitor will have a High Pressure Alert, and when it is 15% lower than the reference pressure, the monitor will have Low Pressure Alert.

Turn on/turn off the signal booster
Long press the SET button for 3 seconds to turn on/off the signal booster. If the signal booster signal is not received within 5 minutes after the monitor is turned on, the signal booster icon will flash. When the signal booster is turned off, the icon will not flash.

6.Alert status



Alert	Alert status
High Pressure Alert	⬮ (!) +25% PSI
Low Pressure Alert	⬮ (!) -15% PSI
High Temperature Alert	⬮ (!) 158 °F
Fast Leakage Alert	⬮ (!) 36 32 ↓
Sensor Low Battery Alert	⬮ ⌘
Sensor Lost Signal Alert	- - - -

7. Trouble shooting

- The monitor cannot turn on.**
Please re-charge the monitor with USB cable.
- There is a tire pressure missing on the display during use.**
The monitor should not be placed closely to other electronic devices (such as dashboard, dash cam, navigation or other aftermarket electronic devices.) after changing the monitor position, drive the car for 5 minutes until the monitor is back to normal state.
- Doubting that whether the sensor detects tire pressure accurately or not.**
Inflate or deflate the tire, then check if the display pressure value is changed or not. If the pressure value is changed, it means that the sensor is working. If there is no changed, the sensor is not working.
Screw the other tire sensor to this tire valve and see if the air pressure is similar to the previous sensor pressure. The small air pressure deviation indicates that the original sensor detects the air pressure accurately. If the air pressure deviation is large, it means that the air pressure detected by the original sensor is not accurate.
- Some sensors do not work after using for a long period of time.**
The sensor's battery may have be run out, need to replace new battery (battery CR2032).
- The tire pressure increases during driving.**
This is a normal phenomenon, the tire temperature increases during driving causing the tire pressure to increases.
- The car is exposed to the sun, and the display brightness is dim.**
When the car is exposed to the sun, the car temperature rises. When the monitor temperature is higher than 185°F, the display brightness is dim. After driving for a while, the display brightness will return to normal as the temperature drops in the car.

Trouble shooting

- The tire pressures are the same, but the pressure alert values are different.**
Because when the sensors were installed, the tire's reference pressure were set automatically according to the corresponding tire pressure. The tires reference pressure may be different so the pressures alert values will be different.
- When the tire pressure is too high, after the tire is deflated to the normal pressure, how to deal with the tire pressure alarm on the display?**
Answer: Unscrew the sensor of the tire and then the display will show “0” pressure of the corresponding tire, and then put the sensor back into the tire valve. The reference pressure set automatically again and the alarm will stop.
- How to hide front vehicle or trailer on the display?**
Note:This function is only available when the trailer sensors are installed. When the front vehicle and trailer are disconnected. If the monitor does not receive sensor data of the front vehicle or the trailer for more than 8 minutes, the display will automatically hide the front or trailer icon and the corresponding data. When the front vehicle and trailer connect again, the monitor will receive both sensor data, the display will show the front vehicle or trailer icon again and the corresponding data.
- All tire data of trailer disappeared?**
Note:This function is only available when the trailer sensors are installed. When the trailer is disconnected from the front vehicle, if the monitor doesn't receive the trailer sensor signal for more than 8 minutes, the display will hide the trailer icon and the corresponding data. When the trailer is connected to the front vehicle again, the monitor will receive the trailer sensor signal. The display will show the trailer icon and the corresponding data again.
- When the signal booster is flashing?**
The monitor has not received booster signal.

⚠ If the sensor is damaged and needs to be replaced, or a sensor other than the standard configuration needs to be added, please scan the QR code to watch the video operation.

Sensor ID learning

Please scan the QR code to watch the video operation for sensor installation and sensor battery replacement operation.

Sensor installation

Sensor battery replacement operation

User manual

Get 24/7 Assistance at

Use camera or QR scanner to scan
Or Visit: <https://tymate.afterservicevip>

Website
www.tymate-tech.com