



DEEBOT **N30** PRO OMNI

Instruction Manual

Instruction Manual	EN	 P03
Bedienungsanleitung	DE	 P18
Manuel d'instructions	FR	 P33
Manuale d'istruzi	IT	 P48
Bruksanvisning	SE	 P63
Bruksanvisning	NO	 P78
Brugsanvisning	DK	 P93
Käyttöopas	FI	 P107
Kullanım Kılavuzu	TR	 P122

For the Instruction Manual in further languages, visit: <https://www.ecovacs.com>.

Die Bedienungsanleitung in anderen Sprachen findest du unter: <https://www.ecovacs.com>.

Pour obtenir le Manuel d'instruction dans différentes langues, visitez : <https://www.ecovacs.com>.

Per il manuale d'istruzioni in altre lingue, visitare il sito Web: <https://www.ecovacs.com>.

Bruksanvisningen finns på fler språk på: <https://www.ecovacs.com>.

Du finner bruksanvisningen på flere språk på: <https://www.ecovacs.com>.

Du kan finde brugsanvisningen på flere sprog på: <https://www.ecovacs.com>.

Käyttöopas on saatavilla muilla kielillä osoitteessa <https://www.ecovacs.com>.

Diğer dillerde sunulan Kullanım Kılavuzu için şu adresi ziyaret edin: <https://www.ecovacs.com>.

IMPORTANT SAFETY INSTRUCTIONS

IMPORTANT SAFETY INSTRUCTIONS

When using an electrical Appliance, basic precautions should always be followed, including the following:

READ ALL INSTRUCTIONS BEFORE USING THIS APPLIANCE SAVE THESE INSTRUCTIONS

1. This Appliance can be used by children aged from 8 years and above and persons with reduced physical, sensory, or mental capabilities or lack of experience and knowledge if they have been given supervision or instruction concerning use of the Appliance in a safe way and understand the hazards involved. Children shall not play with the Appliance. Cleaning and user maintenance shall not be made by children without supervision.
2. Clear the area to be cleaned. Remove power cords and small objects from the floor that could entangle the Appliance. Tuck rug fringe under the rug base, and lift items such as curtains and tablecloths off the floor.
3. If there is a drop-off in the cleaning area due to a step or stairs, you should operate the Appliance to ensure that it can detect the step without falling over the edge. It may become necessary to place a physical barrier at the edge to keep the unit from falling. Make sure the physical barrier is not a trip hazard.
4. Only use as described in this manual. Only use attachments recommended or sold by the manufacturer.
5. For INDOOR household use ONLY. Do not use the Appliance in outdoor, commercial, or industrial environments.
6. Do not use without dust bin and/or filters in place.
7. Do not operate the Appliance in an area where there are lit candles or fragile objects.
8. Keep hair, loose clothing, fingers, and all parts of body away from any openings and moving parts.
9. Do not operate the Appliance in a room where an infant or child is sleeping.
10. Do not use Appliance on wet surfaces or surfaces with standing water.

11. Do not allow the Appliance to pick up large objects like stones, large pieces of paper, or any item that may clog the Appliance.
12. Do not use Appliance to pick up flammable or combustible materials such as gasoline, printer or copier toner, or use in areas where they may be present.
13. Do not use Appliance to pick up anything that is burning or smoking, such as cigarettes, matches, hot ashes, or anything that could cause a fire.
14. Do not put objects into the suction intake. Do not use if the suction intake is blocked. Keep the intake clear of dust, lint, hair, or anything that may reduce air flow.
15. If the power cord is damaged, it must be replaced by the manufacturer or its service agent in order to avoid a hazard.
16. Turn OFF the power switch before cleaning or maintaining the Appliance.
17. Please dispose of used batteries according to local laws and regulations.
18. Do not incinerate the Appliance even if it is severely damaged. The batteries can explode in a fire.
19. The Appliance must be used in accordance with the directions in this Instruction Manual. Ecovacs Home Service Robotics cannot be held liable or responsible for any damages or injuries caused by improper use.
20. The robot contains batteries that are only replaceable by skilled persons. To replace the robot's battery, please contact Customer Service.
21. Please make sure your power supply source voltage matches the power voltage marked on the OMNI Station.
22. Use only the original rechargeable battery and OMNI Station provided with the Appliance from the manufacturer. Non-rechargeable batteries are prohibited.
23. Take care not to damage the power cord. Do not pull on or carry the Appliance or OMNI Station by the power cord, use the power cord as a handle, close a door on the power cord, or pull power cord around sharp edges or corners. Do not run Appliance over the power cord. Keep power cord away from hot surfaces.
24. Do not use the OMNI Station if it is damaged. The power supply is not to be repaired and

not to be used any longer if it is damaged or defective.

25. Do not use with a damaged power cord or receptacle. Do not use the Appliance or OMNI Station if it is not working properly, has been dropped, damaged, left outdoors, or come in contact with water. It must be repaired by the manufacturer or its service agent in order to avoid hazards.
26. The plug must be removed from the receptacle before cleaning or maintaining the OMNI Station.
27. Remove the Appliance from the OMNI Station, and turn OFF the power switch to the Appliance before removing the battery for disposal of the Appliance.
28. When not using the OMNI Station for a long period of time, please unplug it.
29. If the robot will not be used for a long time, power OFF the robot for storage and unplug the OMNI Station.
30. WARNING-Add clean water into the clean tank only.
32. **WARNING:** For the purposes of recharging the battery, only use the detachable supply

unit CH2427 provided with the Appliance.

To satisfy RF exposure requirements, a separation distance of 20 cm or more should be maintained between this device and persons during device operation.









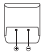

To ensure compliance, operations at closer than this distance is not recommended. The antenna used for this transmitter must not be co-located in conjunction with any other antenna or transmitter.

Device Update

Typically, some devices are updated bi-monthly, but not always so specific.

Some devices, especially those that went on sale more than three years ago, will only be updated if a critical vulnerability is found and fixed.

Ensure the robot is always connected to a network, for smart features to function properly.

	Caution: hot surface
	Short-circuit-proof safety isolating transformer
	Switch mode power supply
	For indoor use only
	Direct current
	Alternating current
	This product conforms to the applicable EC Directives.
	Before charging, read the instructions.
	Polarity of the charging port
	Time-lag miniature fuse-link

The remote surveillance is for the absolute private use of non-public, private owned places for the pure self-protection and single control intended only. Please be aware of the local data protection based legal obligations in case of use. No surveillance of public places, especially with clandestine intent and/or on the part of the employer without justified reasons. Such not justified use is in the risk and responsibility of the user only.

European Union Compliance Statement Information on Disposal for Users of Waste Electrical & Electronic Equipment



This symbol on the product or on its packaging indicates that used electrical and electronic products should not be mixed with unsorted municipal waste. For proper treatment, it is your responsibility to dispose of your waste equipment by arranging to return it to designated collection points. Disposing of this product correctly will help save valuable resources and prevent any potential negative effects on human health and the environment, which could otherwise arise from inappropriate waste handling. To return your used device, please use the return and collection systems or contact the retailer where the product was purchased, which is free of charge, please contact your local authority for further details of your nearest designated collection point. Penalties may be applicable for incorrect disposal of this waste, in accordance with your national legislation.

Information on Disposal for Users of used batteries



This symbol means that batteries and accumulators, at their end-of-life, should not be mixed with unsorted municipal waste. Your participation is an important part of the effort to minimize the impact of batteries and accumulators on the environment and on human health. For proper recycling you can return this product or the batteries or accumulators it contains to your supplier or to a designated collection point, which is free of charge. Disposing of this product correctly will help save valuable resources and prevent any potential negative effects on human health and the environment, which could otherwise arise from inappropriate waste handling. Penalties may be applicable for incorrect disposal of this waste, in accordance with your national legislation. there are separate collection systems for used batteries and accumulators. Please, dispose of batteries and accumulators correctly at your local community waste collection/recycling center.

Restriction of the use of certain hazardous substances (RoHS) Directive

Ecovacs Home Service Robotics Co., Ltd. hereby declares the whole product including parts (cables, cords, and so on) meets the requirements of RoHS Directive 2011/65/EU and amendment Commission Delegated Directive (EU) 2015/863 on the restriction of the use of certain hazardous substances in electrical and electronic equipment ("RoHS recast" or "RoHS 2.0").

Radio Equipment Directive

Ecovacs Home Service Robotics Co., Ltd. hereby declares that the product listed in this section comply with the essential requirements and other relevant provisions of the Radio Equipment Directive 2014/53/EU.

Europe Authorised Representative:

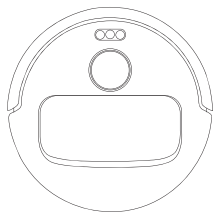


ECOVACS Europe GmbH
Holzstrasse 2 | D-40221 Düsseldorf | Germany

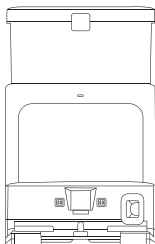
Ecovacs Home Service Robotics Co., Ltd. hereby declares that the product comply with the essential requirements and other relevant provisions of the RoHS Directive 2011/65/EU and amendment Commission Delegated Directive (EU) 2015/863, the Radio Equipment Directive 2014/53/EU. The declaration of conformity can be viewed at the following address:

<https://www.ecovacs.com/global/compliance>.

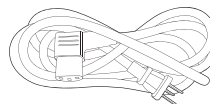
PACKAGE CONTENTS



Robot



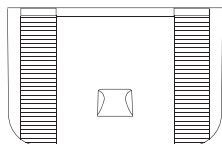
OMNI Station



Power Cord



Side Brush



Base



Instruction Manual



Mopping Pad Plates

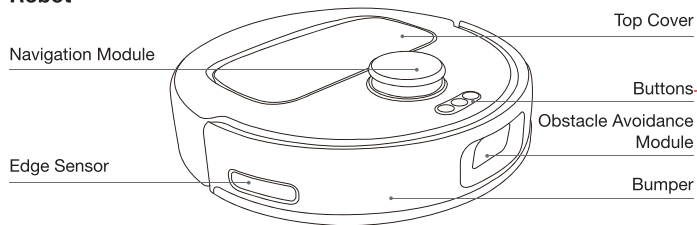


Washable Mopping Pads

Note: Figures and illustrations are for reference only and may differ from actual product appearance. Product design and specifications are subject to changes without notice.

PRODUCT DIAGRAM

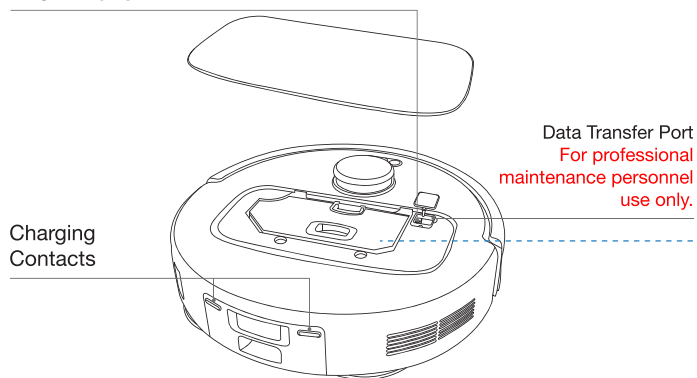
Robot



Buttons

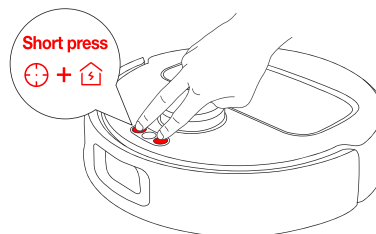
- Short Press: Return to Station Long Press: Start Station Self-Cleaning
- Short Press: Start/Pause/Continue Long Press: Power on/off
- Short Press: Start/End Spot Cleaning Long Press: Child Lock
- Short Press: Set up the network

RESET Button



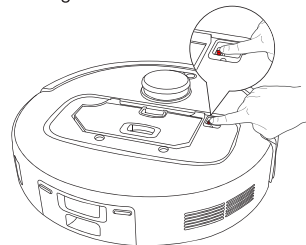
Network setup buttons

Set up the network: Press + to prepare the robot for network setup. Then, follow the voice prompts to connect to the App.



RESET Button

Restore to default settings: Press and hold the RESET button for 5 s, and you will hear a prompt sound. After that, the startup music will play, and the robot will be restored to default settings.

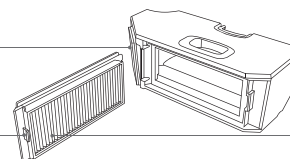


Dust Bin

Dust Disposal Port

Catch

Filter



Bottom View

Anti-drop Sensors

Carpet Detection Sensor

Cyclone-directed Anti-Tangle Roller Brush

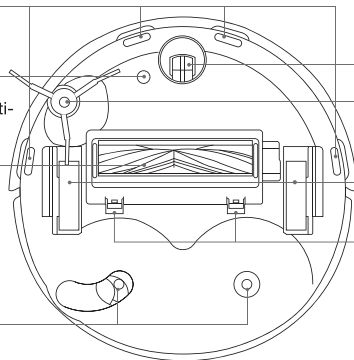
Mounting Slots for Mopping Pad Assembly

Universal Wheel

Side Brush

Driving Wheels

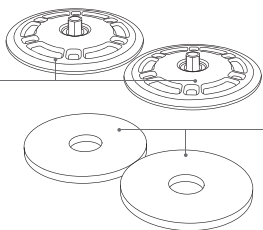
Brush Release Latches



Mopping Pad Assembly

Mopping Pad Plates

Washable Mopping Pads



Note: Figures and illustrations are for reference only and may differ from actual product appearance. Product design and specifications are subject to changes without notice.

Station (Front)

Note:

- If the Indicator flashes red, go to the ECOVACS HOME App for details about the malfunction.
- If the robot cannot charge, wipe the corresponding charging contacts on the OMNI Station with a dry cloth.

Clean Water Tank

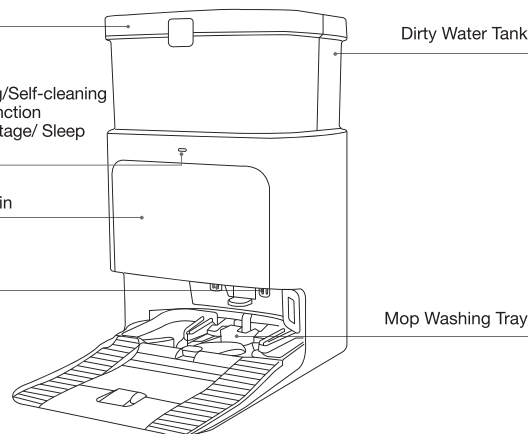
Light Strip
Solid White: Running/Self-cleaning
Flashing Red: Malfunction
Goes out: Power Outage/ Sleep Mode

Dust Collection Cabin

Charging Contacts

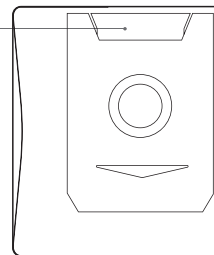
Dirty Water Tank

Mop Washing Tray

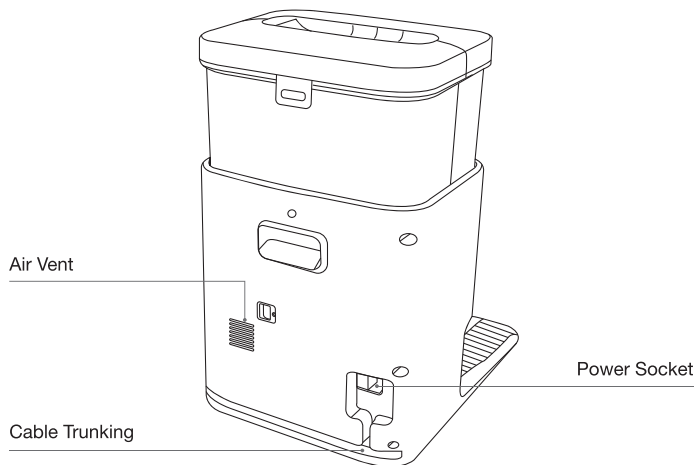


Dust Bag

Dust Bag Handle



Station (Back)

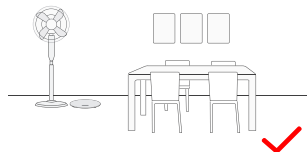


Note: Figures and illustrations are for reference only and may differ from actual product appearance. Product design and specifications are subject to changes without notice.

Sensors

Part	Function Description
Navigation Module	By utilizing the principle of triangulation, which involves emitting and receiving laser beams reflected by surrounding objects, precise distance measurement information between the robot and nearby objects can be calculated through algorithms. When the robot moves within a certain environment, the positions of surrounding objects are determined to create a spatial map of the robot's surroundings. The measurement range is 8 m.
Obstacle Avoidance Module	This module automatically avoids obstacles using line laser scanning and multiple sensors. Powered by advanced algorithms, it accurately perceives and measures the distance of various household obstacles in real-time, down to millimeter precision. This capability enables early prediction and avoidance, ensuring precise and smooth cleaning operations.
Anti-drop Sensors	Using Infrared Ranging, the infrared sensor on the robot's underside measures the distance between the bottom of the robot and the ground. If the sensor detects a drop ahead (e.g., ≥ 90 mm for white ground), and the measurement result exceeds the preset limit, the robot will stop moving forward to prevent falls. The trigger distance is 60 mm.
Carpet Detection Sensor	The ultrasound probe emits ultrasonic waves with a frequency of 300 kHz. As ultrasonic waves can be absorbed by carpets, the robot can identify the presence of a carpet when the reflected energy falls below a certain threshold. According to ECOVACS lab tests, currently, over 50 types of carpets available on the market can be identified.
Edge Sensor	With Infrared Ranging, the robot can detect the distance between itself and objects on its right side. When there is a wall or obstacle on the right side, the robot will perform edge cleaning to avoid missed spots or collisions.
Anti-collision Sensor	When the transmitted signal is blocked by an obstacle, the signal receiver will not be able to receive it. With this principle, the robot will avoid obstacles when encountering them.

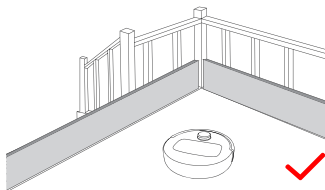
NOTES BEFORE CLEANING



Tidy up the area to be cleaned by putting furniture, such as chairs, in their proper place.



During the first use, make sure each room door is open to help the robot fully explore your home.



It may be necessary to place a physical barrier at the edge of a drop to prevent the robot from falling over the edge.



Put away objects including cables, clothes, slippers, etc. on the floor to improve the cleaning efficiency.



Tuck the edges of tasseled rugs underneath before cleaning.



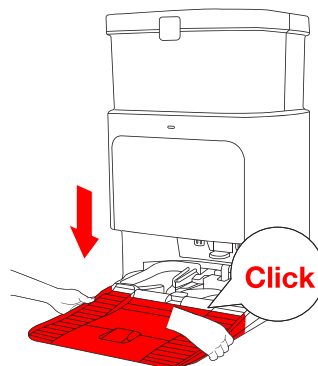
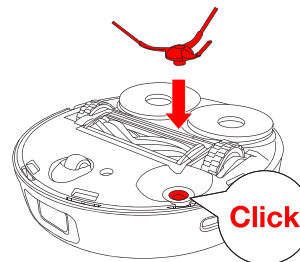
Please do not stand in tight spaces such as doorways and hallways, and make sure not to block the robot's path when it's identifying areas.

QUICK START

Before using, please remove all protective materials from the robot and OMNI Station.

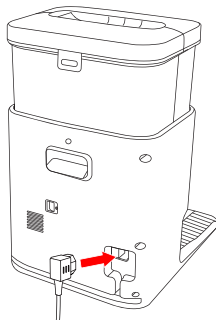
Installation

The sound of "Click" indicates proper installation.



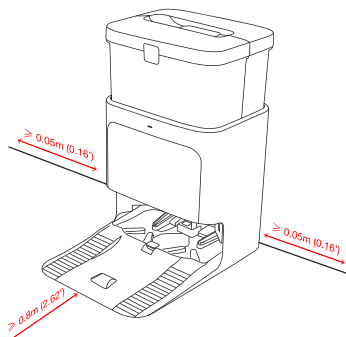
PREPARE THE STATION

1 Plug in the Station



2 Place the Station

Position the Station against a wall on a level, hard surface. Ensure there are no objects within 0.05 m on either side and 0.8 m in front of it.

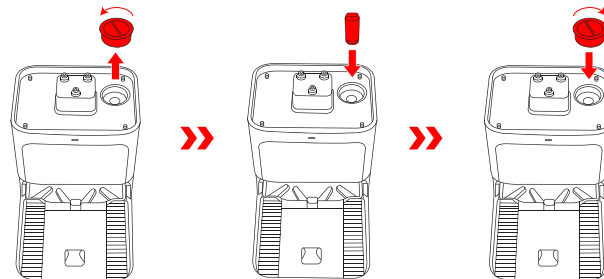


- If there are reflective objects such as mirrors and skirting lines near the Station, the bottom 14 cm of them should be covered.
- Do not place the Station under direct sunlight.
- Place the Station in a location with a strong Wi-Fi signal.

USE CLEANER AND WATER TANK

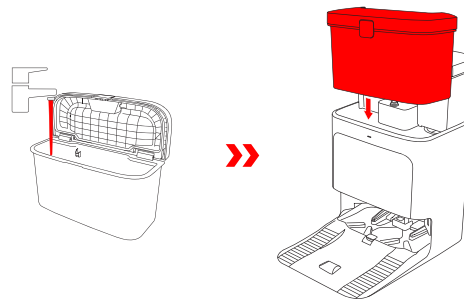
1 Use Solid Floor Cleaner

The Solid Floor Cleaner needs to be purchased separately.



- Please replace the product promptly after 30 days of use or when its color noticeably fades. The actual duration and discoloration may vary depending on the frequency of use.
- DO NOT remove the product's outer shell, put it directly into the Clean Water Tank, or use it with any other cleaning or disinfecting products.
- Avoid contact with eyes. Should contact occurs, rinse immediately with plenty of water. Avoid ingestion. If accidentally ingested, drink plenty of water and seek medical assistance promptly.

2 Use Clean Water Tank

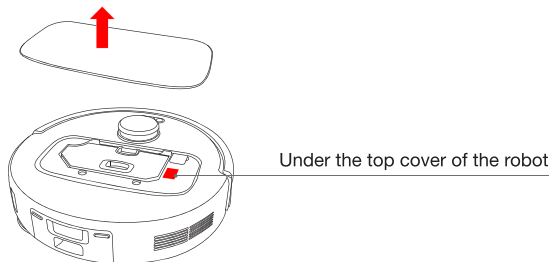


- Please only use the Solid Floor Cleaner provided by ECOVACS. To purchase it, go to the ECOVACS HOME App or <https://www.ecovacs.com>.

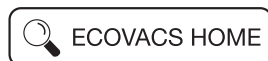
DOWNLOAD THE APP

To enjoy all available features, it is recommended to control your robot via the ECOVACS HOME App.

1. Scan the QR Code under the Top Cover of the robot to download the App.



2. Search "ECOVACS HOME" to download the App.




CONNECT DEEBOT WITH APP

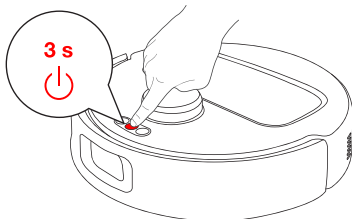
Wi-Fi Network Requirements:


- You are using a 2.4GHz or 2.4/5 GHz mixed network.
- Your router supports 802.11b/g/n and IPv4 protocol.
- Do not use a VPN (Virtual Private Network) or Proxy Server.
- Do not use a hidden network.
- WPA and WPA2 using TKIP, PSK, AES/CCMP encryption.
- WEP EAP (Enterprise Authentication Protocol) is not supported.
- Use Wi-Fi channels 1-11 in North America and channels 1-13 outside North America (refer to local regulatory agency).
- If you are using a network extender/repeater, the network name (SSID) and password are the same as your primary network.
- Please enable the WPA2 on your router.

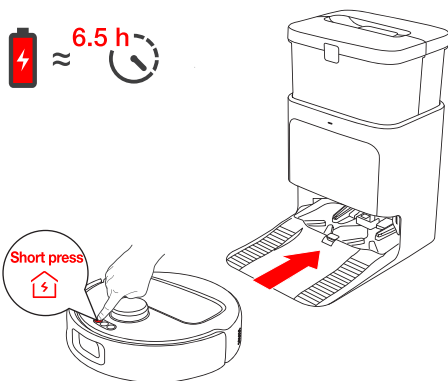
Please note that to access smart features such as remote startup, 2D map display and control settings, and personalized cleaning (features may vary depending on the product), you'll need to download and use the ECOVACS HOME App, which receives constant updates. You must agree to our Privacy Policy and User Agreement before we can process some of your basic and necessary information and enable you to operate the product. Without your agreement, some of the aforementioned smart features cannot be accessed through the ECOVACS HOME App. Nevertheless, you can still use the products' basic functions for manual operation.

CHARGE DEEBOT

- 1 Press and hold  for 3 s, wait for the startup music to play, indicating that the robot has powered on.



- 2 Tap  to recall the robot to enter the Station to charge.



- Once the Station is placed properly and plugged in, the robot will automatically return to it to recharge and empty the Dust Bin as needed during operation. To ensure this process runs smoothly, it is recommended that the robot starts from the Station and that the Station is not moved while cleaning.


OPERATE DEEBOT

When creating a map for the first time, please follow the robot to help resolve some minor issues.

For instance, if the robot gets stuck under low furniture, you can refer to the following solutions:

1. Raise the furniture if feasible.
2. Cover the bottom of the furniture to prevent the robot from entering.
3. Set up virtual boundaries in the App to prevent the robot from entering.

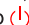
1 Start Cleaning

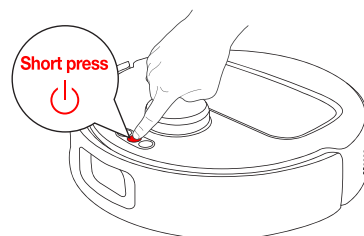
Before cleaning for the first time, please make sure the robot is in the Station and fully charged. Tap  on the robot, and then the robot will start cleaning and mapping simultaneously.

2 Pause

When the robot is working, tap  on it to pause its activity.

3 Wake up


After pausing for a while, all indicator lights on the robot will go out. To wake the robot up, tap  on it.

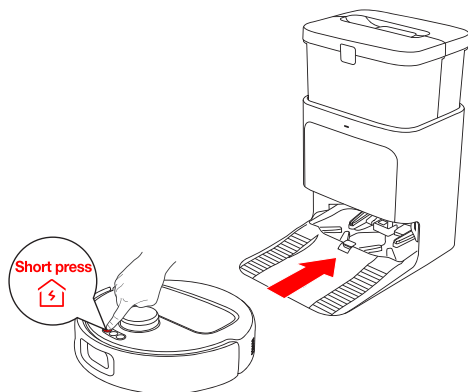


Note:

1. Do not frequently remove the washable mopping pads.
2. Do not use a rag or any other object to scratch the Mopping Pad Plates.
3. When the ECOVACS HOME App prompts that the mopping pads need to be replaced, please replace them in time. Explore more accessories in the ECOVACS HOME App or at <https://www.ecovacs.com>.

4 Back to Station

Tap  to recall the robot to the Station to charge.



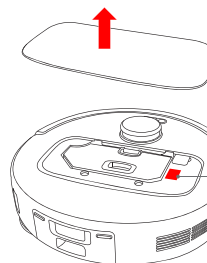
- Even when the robot is not in use, it is recommended to keep it powered ON and charging, to prepare for the next cleaning session.

TECHNICAL SPECIFICATIONS

Model	YDLX11-1		
Rated Input	20 V === 2 A	Charging Time	6.5 h
Auto-Empty Station	CH2427		
Rated Input	220-240 V ~ 50-60 Hz		
Rated Input Current (Charging)	0.5 A	Rated Output	20 V === 2 A
Power (Emptying)	650 W		
Power (Hot Water Washing Mop)	1650 W		

Output power of the Wi-Fi module is less than 100 mW.

Note: Technical and design specifications may be changed for continuous product improvement. Explore more accessories at <https://www.ecovacs.com>.



Please use the mobile camera to scan the QR code and obtain the user guide.