

# Blackview

— Enjoy Smart Life —

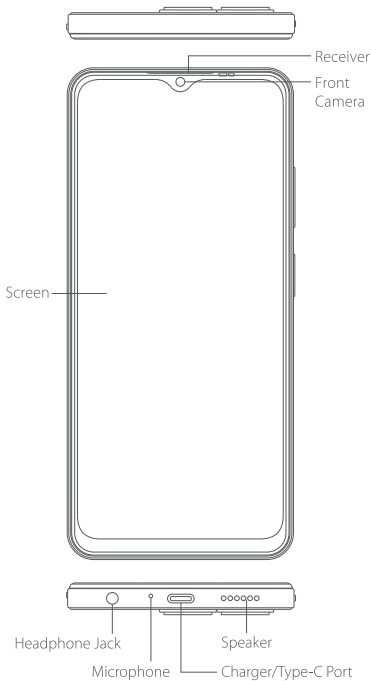
## WAVE 8 Series

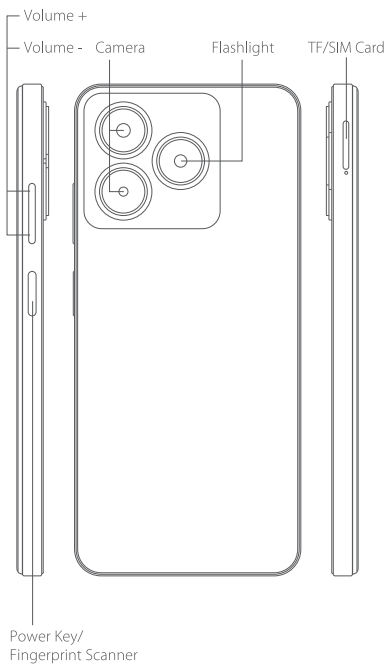
<http://www.blackview.hk>



**DOKE COMMUNICATION (HK) LIMITED**

19H MAXGRAND PLAZA NO 3 TAI YAU STREET SAN PO KONG KL

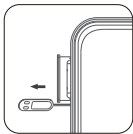




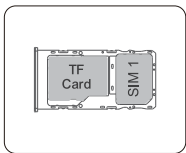
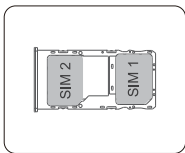
## ❶ How to insert the card

To make sure your smartphone be able to call, put the SIM card in the following order.

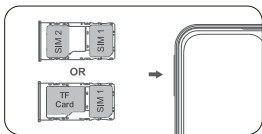
- Press the card pin into the side hole and then the card tray pops up and pull out it.



- Take out the card slot and place the Nano card or Nano card and TF card with the metal side facing down. Make sure the bevel angle is aligned with the bevel angle of the card slot and placed in the corresponding card slot.



- Insert the card holder into the phone in the direction of the arrow.



## ② How to boot

### Non-removable battery

**Press the power button for 3-5 seconds to boot**

## ③ How to send SMS, MMS

### SMS

- Open the SMS app
- Select New Information
- Enter a phone number or browse your contacts
- Select Edit Information and enter your text
- Send ➤

### MMS - video

- When writing a text message
- Select images, videos or other files you want to add, even You can take a new picture or video right away.
- Selecting or sending ➤

## ④ Language switching settings

- Main menu—settings—system setting—language and input method
- Language and input method—language—language adding
- Select the language you need, the system will automatically jump back to the language interface.
- Select the icon after the language bar and drag it to the first one.

## ⑤ SAR

- The maximum electromagnetic radiation absorption ratio (SAR) of this product is  $\leq 2.0\text{W/kg}$ .
- In line with the requirements of the national standard GB 21288-2007.

### EU Declaration Conformity

Hereby, Shenzhen DOKE Electronic Co., Ltd. declares that this device is in compliance with the essential requirements and other relevant provisions of Directive 2014/53/EU. In accordance with Article 10(2) and Article 10(10), This product is allowed to use in all EU member states.

A complete declaration of conformity can be obtained at: [www.XXXXXXX.com](http://www.XXXXXXX.com)



The device is restricted to indoor use only when operating in the 5150 to 5250MHz frequency range.

### RF Exposure Statement

SAR tests are conducted using standard operating positions According CE standard with the device transmitting at its highest certified power level in all tested frequency bands, although the SAR is determined at the highest certified power level, the actual SAR level of the device while operating can be well below the maximum value.

This model product has been tested and meets the CE RF exposure guidelines with the test distance is 0mm for head & limbs, 5mm for body worn, the max. SAR value report is 0.687W/kg for head, 1.297W/Kg for body worn and 1.913W/Kg for limbs. The use of belt clips, holsters and similar accessories should not contain metallic components in its assembly. The use of accessories that do not satisfy these requirements may not comply with CE exposure requirements, and should be avoided.

### Warnings

- 1 Risk of explosion if battery is replaced by an incorrect type. Dispose of used batteries according to the instructions.
- 2 Use careful with the earphone maybe possible excessive sound pressure from earphones and headphones can cause hearing loss.



- 3 Adapter shall be installed near the equipment and shall be easily accessible.
- 4 To charge the device, please use the charger with the device or CE approved charger with output parameters described as below; unauthorized power adapter or data cable may cause charger exploding or damage the machine.

Adapter information:

Model: QZ-01004EA00

Input: 100-240V~ 50/60Hz 0.3A

Output: 5.0V=2.0A (10.0W)

- 5 Plug the adapter power socket in 100-240VAC socket, others may cause charger exploding or damage the machine. The plug considered as disconnect device of adapter.
- 6 Do not store the device in temperatures lower -20 °C and higher than 60 °C.
- 7 The safety operating temperature of this device is 0°C-25°C.

**Technical description:**

Frequency Range: GSM 850 / 900 / 1800 / 1900 MHz

UTRA FDD Band I/VIII

E-UTRA FDD Band 1/3/7/8/20

E-UTRA TDD Band 38/40

2.4G WiFi: 2412 ~ 2472 MHz

5G WiFi: 5180 - 5240 MHz

Non-SRD: 5745~5825MHz

Bluetooth: 2402 ~ 2480 MHz

GNSS: 1575.42 MHz (Rx)

FM: 87.5 ~108 MHz (Rx)

Transmit Power: GSM900:32±1.5dBm, DCS1800:29±1.5dBm

UTRA FDD band I:  $23 \pm 1.5$ dBm

UTRA FDD band VIII:  $20 \pm 1$ dBm

E-UTRA FDD:  $22 \pm 2$ dBm

2.4G WiFi: 18.57 dBm EIRP

5G WiFi: 13.61 dBm EIRP

Non-SRD: 12.71 dBm EIRP

Bluetooth: 7.92dBm EIRP