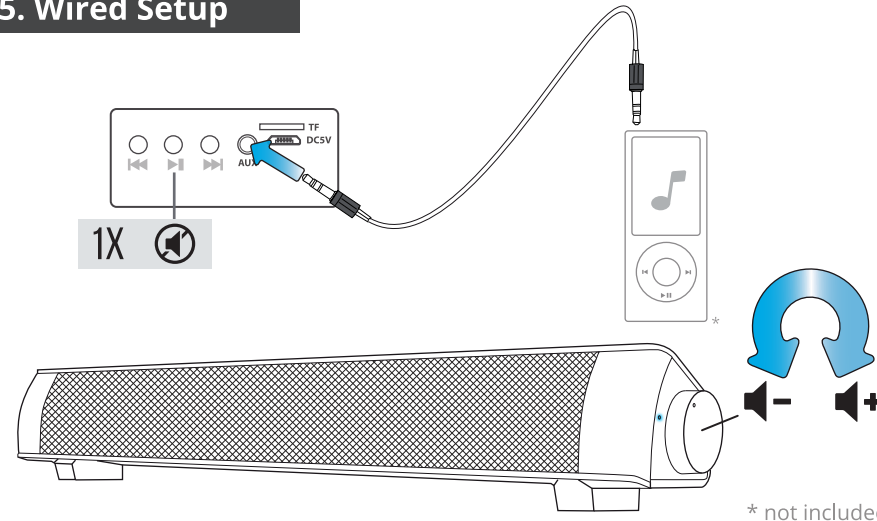
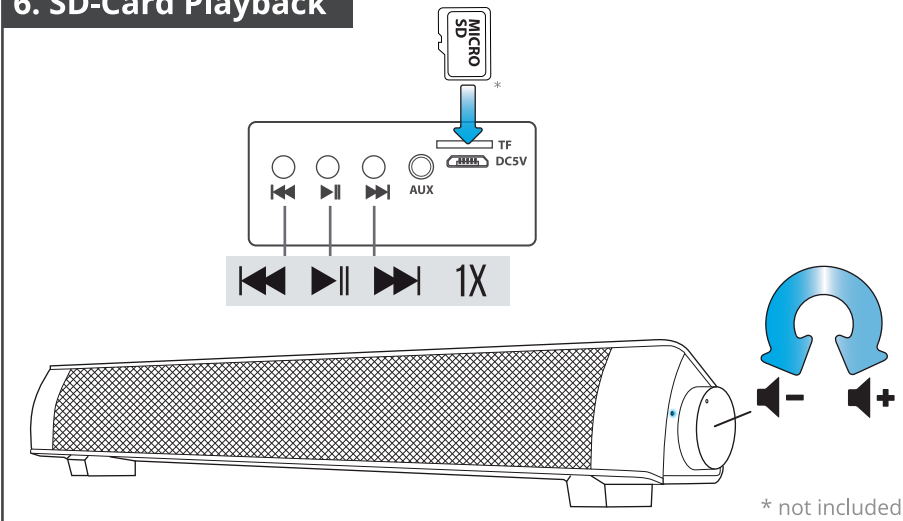


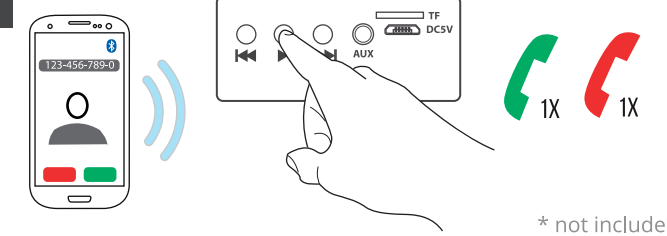
5. Wired Setup



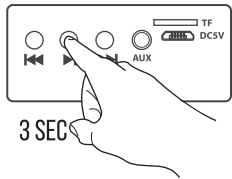
6. SD-Card Playback



7. Phone Call



FAQ



SWITCH MODES
-BT
-AUX
-SD

Frequently asked questions www.trust.com/22015/faq

Trust International BV - Laan van Barcelona 600 - 3317DD, Dordrecht, NL

© 17-05-2017 Trust All rights reserved.

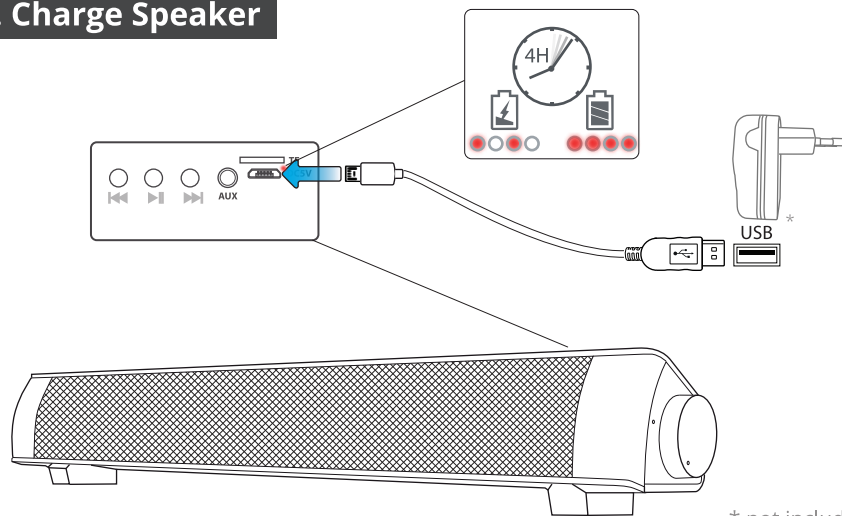
Trust
WIRELESS
SOUNDBAR

LINO

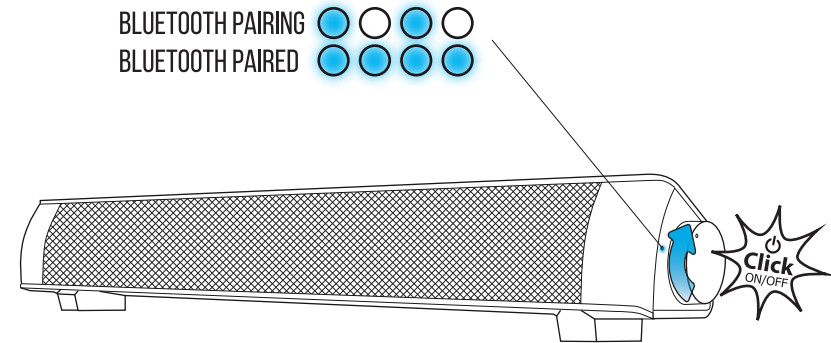


Quick Installation Guide

1. Charge Speaker



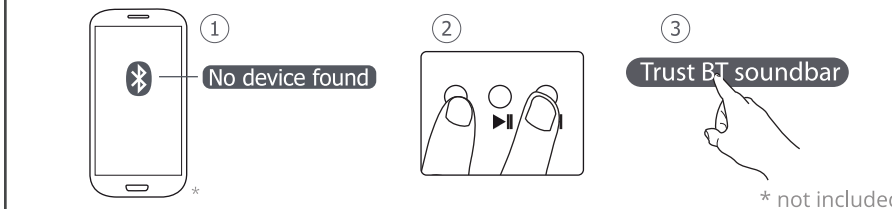
2. Wireless Setup 1/2



3. Wireless Setup 2/2



Wireless Troubleshoot



4. Wireless Playback

