

USER'S GUIDE



Warm Tips

1. Ensure the USB-C data cable is securely connected to the device interface.
2. This product supports full function of USB-C (charging and video), integrated one line. If screen cannot be powered on or restarted, please use an external 5V/2A power supply.
3. Compatible with Windows and MacOS laptops

Product Introduction

Meet the S17 Portable Dual-Screen Laptop Monitor – your ultimate productivity companion designed for modern multitaskers. This lightweight foldable second screen instantly transforms any workspace into an efficient mobile studio, boosting productivity by up to 50% with seamless multi-screen configurations that operate in sync or independently. Perfect for professionals, gamers, content creators, and students seeking optimized workflow.

Engineered with universal compatibility, the S17 works effortlessly with Apple, HP, Dell, and other major laptop brands through its plug-and-play USB-C connectivity (requires combined signal/power capability). Expand your display setup effortlessly using mini-HDMI or USB-C ports without docking stations – compatible with desktops, consoles, and mini PCs. Note: HDMI connections require external power.

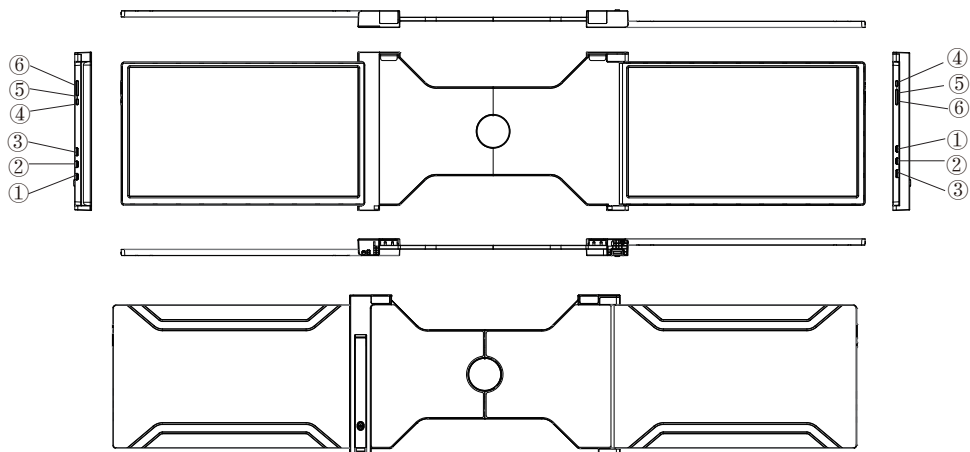
The ultra-stable holder securely fits laptops from 15" to 17.3" while offering customizable angles with 235° left-screen and 180° right-screen rotation for ideal viewing. Personalize your visual experience with adjustable brightness/contrast controls and versatile positioning for work or entertainment.

Table of Contents

Product Attributes	1
1. Product Host	1
2. What's in the Box	2
3. Technical Details	2
 Installation and Stowing Mode	 3
1. Opening Mode	3
2. Adjust the Kickstand	3
3. Opening Sequence	4
4. Closing Sequence	4
 How to Connect Laptops	 5
How to Identify A Full-Function USB-C Port	7
Display Mode	8
OSD Setting	10
FAQs	12

Product Attributes

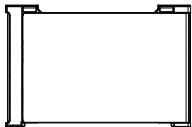
1. Product Host



- ① Full-Function USB-C Ports (Supply Power & Video Signal Transmission)
- ② Full-Function USB-C Ports (Supply Power & Video Signal Transmission)
- ③ Mini-HDMI Ports (Only Video Signal Transmission)
- ④ M Buttons (OSD Setting)
- ⑤ + Buttons
- ⑥ - Buttons

Product Attributes

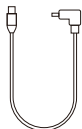
2. What's in the Box



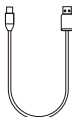
Monitor



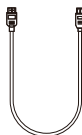
Carrying Bag



2 * USB-C to USB-C Cable



2 * USB-A to USB-C Cable



2 * HDMI to Mini-HDMI Cable

3. Technical Details

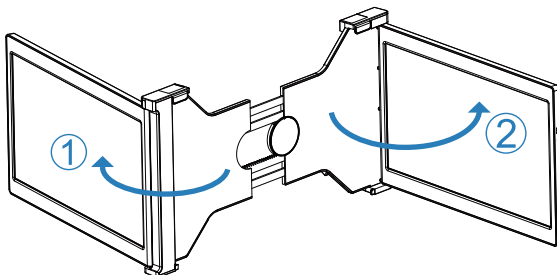
Model	S17
Display	15-inch diagonal, 16:9 aspect ratio, 1920 x 1080 resolution @60Hz, HDR 300 nits, 1000:1 contrast ratio, IPS panels
Ports	4 x Full-Function USB-C Ports 2 x Mini-HDMI Ports
Dimensions (W X D X H)	15.55 X 9.25 X 1.0 in, 39.5 X 23.5 X 2.53 cm
Weight	3.1 lb / 1.4kg

Installation and Stowing Mode

1. Opening Mode

Step 1: Gently unfold the monitor from the closed position.

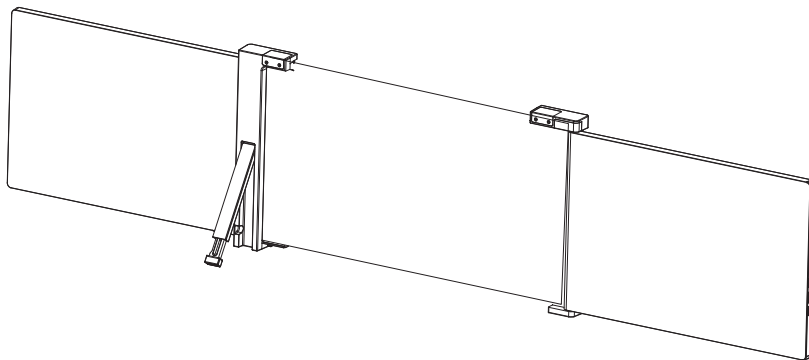
Step 2: Rotate the screen to the desired angle.



Note: sequence of open and close must be performed to avoid damage of device

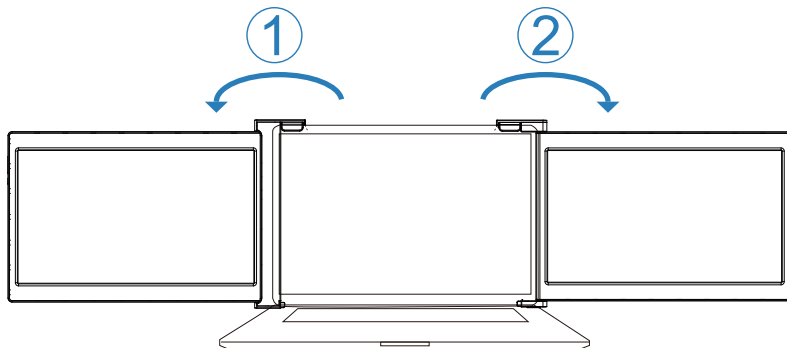
2. Adjust the Kickstand

Adjust the kickstand angle and height.

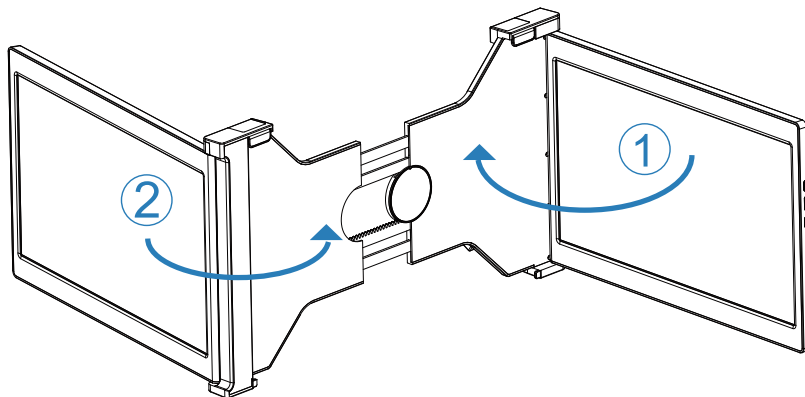


Installation and Stowing Mode

3. Opening Sequence



4. Closing Sequence



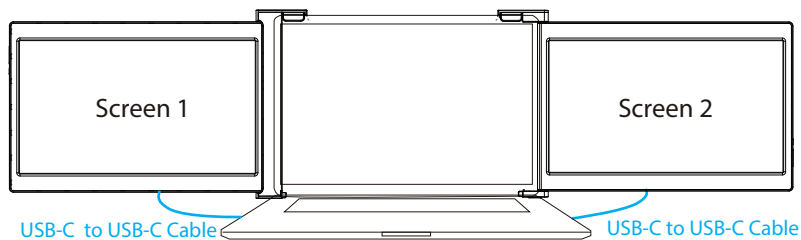
How to Connect Laptops

A: Laptops With At Least 2 Full-Function USB-C Ports

If your laptop has two full-function USB-C ports, you can connect the screen directly to your laptop with USB-C to USB-C cable.

Screen 1: Connect using 1 x USB-C to USB-C Cable (Supply Power & Video Signal Transmission)

Screen 2: Connect using 1 x USB-C to USB-C Cable (Supply Power & Video Signal Transmission)



Note: For quick identification of the full-function USB-C port, please refer to page 7 of this user manual.

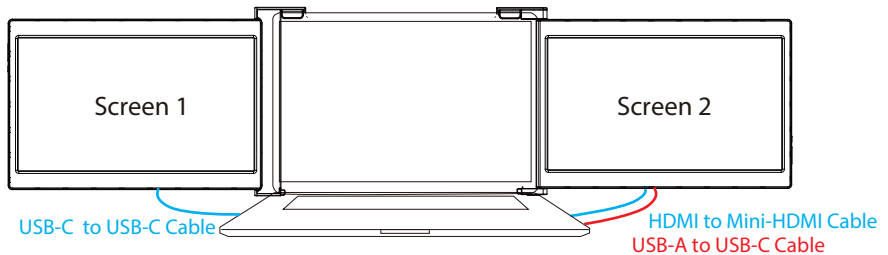
How to Connect Laptops

B: Laptops Has At Least 1 Full Function USB-C Port + 1 HDMI Port +1 USB-A Port

If your laptop has 1 full-function USB-C port, 1 USB-A port and 1 HDMI port, please first connect screen 1 using the USB-C to USB-C cable. Then connect the other monitor using the USB-A to USB-C cable and the HDMI to Mini-HDMI cable.

Screen 1: Connect using 1 x USB-C to USB-C Cable (Supply Power & Video Signal Transmission)

Screen 2: Connect using 1 x HDMI to Mini-HDMI Cable * 1 (Only Video Signal Transmission)
AND connect using 1 x USB-A to USB-C Cable * 1 (Power)



Note: If the display has no signal or the signal is unstable after connection, please use USB-A to USB-C cable connect an external 5V/2A power adapter to power the screen.

How to Identify A Full-Function USB-C Port

1. Look at your laptop's USB-C ports and find the Thunderbolt icon, D or DP symbol next to it (DP means DisplayPort) as shown above. If these icons are present, the ports are full-function USB-C ports.



2. If you don't see these symbols, check your laptop's manual to see that your USB-C port has display support or if the manual mentions "DP Alt-Mode".

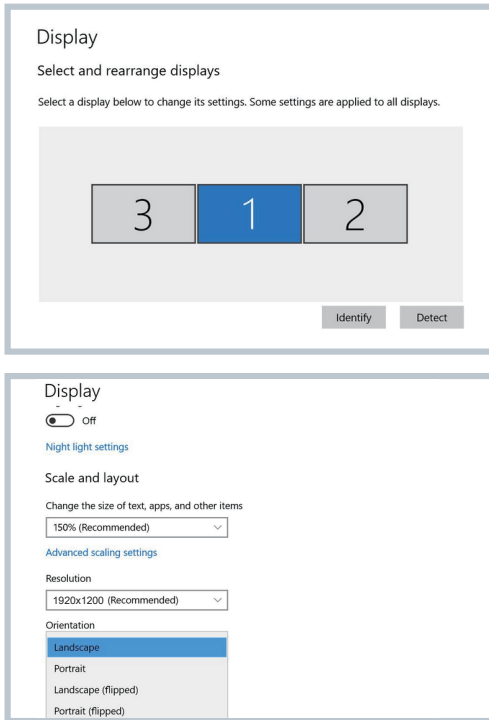
3. If you are unsure of your laptop's compatibility, please let us know your laptops brand and model so that we can help you determine if this product will work for you.

Display Mode

1. For Windows® 10 / 11 Display Settings

1.1 Right-click a blank area of the desktop. Select 'Display Settings' from the pop-up dialogue box.

Left click "Display Settings" to open the settings dialogue box, as shown.



1.2 Under the "Rearrange displays" section, drag and drop each display to rearrange them according to their physical layout of your desktop. Scroll down to the bottom of the page to further configure the display for extended or mirrored mode.

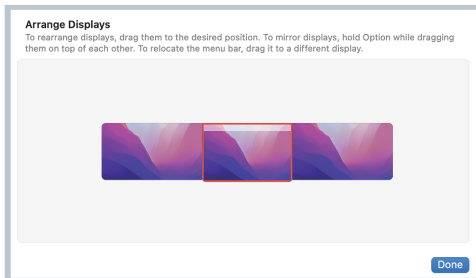
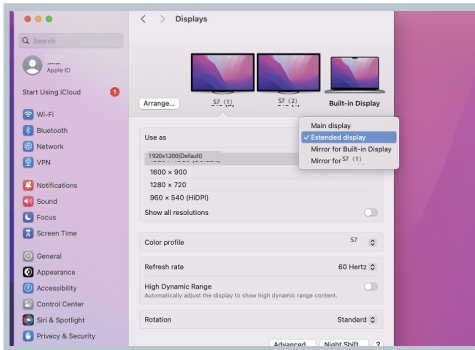
Display Mode

2. For MacOS® display settings, ensure your system is updated to version 13.0 or later.

2.1 Enter the “System Preferences” menu

2.2 Configure your monitor

In this menu, you can set the resolution and mirror/extend the display you want.



2.3 Arrange Displays

To rearrange displays, drag them to the desired position.

To mirror displays, hold Option key while dragging them on top of each other.

To relocate the menu bar, drag it to a different display.

OSD Settings



4-Step Operation

- ① Short press "M" → Open OSD menu
- ② Press +/- → Navigate options
- ③ Short press "M" → Confirm selection
- ④ Long press "M" → Exit/Return



BACKLIGHT SETTINGS

Brightness: 0-100 (Default: 50)

Contrast: 0-100 (Default: 50)

ECO Mode: Standard/Game/Movie/

Text/FPS/RTS/Power Saving

DCR: On/Off (Dynamic Contrast Ratio)

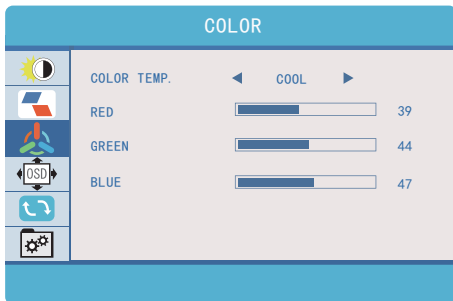
Sharpness: 0-4 (0=Softest, 4=Sharpest)



IMAGE SETTINGS

Aspect Ratio: 4:3 / Wide

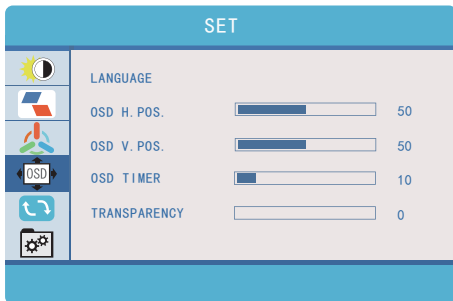
OSD Settings



COLOR SETTINGS

Color Temp:
Warm/Cool/Standard/User

RGB Custom:
Red 0-100
Green 0-100
Blue 0-100



SYSTEM SETTINGS

Language: 12 Languages (Incl. English/Chinese)
OSD Timer: 10-60 seconds
Transparency: 0-100%



RESET & OTHERS

Reset: Restore all default settings
HDR Mode: Off/Auto/2084
(Device compatibility required)
Source Select: Type-C1 / Type-C2 / HDMI
Low Blue Light: On/Off

FAQs

Q1 : Do I need to install any drivers?

A1 : No drivers required, it's plug-and-play.

Q2 : Why is only one screen working?

A2 : Ensure your laptop has full-function USB-C ports (look for Thunderbolt 3/4 or DP symbols). For HDMI connections, use a HDMI to mini-HDMI cable for video and a USB-A to USB-C cable for power.

Q3 : How do I fix flickering or black screens?

A3 : This is usually caused by low power. Use the included 5V/2A adapter with the USB-A to USB-C cable to stabilize the connection.

Q4 : How do I check if my USB-C port is full-function?

A4 : Check for a Thunderbolt 3/4 logo or "DP" symbol near the port. If none, look up your laptop's specs online or contact the manufacturer.

Q5 : Is this compatible with MacBook?

A5 : Yes, compatible with M4, M4 Pro/Max, M1 Pro/Max, M2 Pro/Max, M3 Pro/Max chips. Not supported: Base models of M1/M2/ M3 chips. Confirm your MacBook model with us to ensure compatibility.

Customer Support

If you encounter any issues while using the our portable Screen Monitor, please contact us. We are committed to resolving your concerns promptly and ensuring a seamless experience.