

Welcome to **FlexFusion™** styling.

SCAN FOR PERSONALIZED VIDEOS



Take the quiz and get how-to video
content perfect for your hair type.



FOR ALL HAIRKIND™

The **all-in-one styling system** that fuses heated ceramic and powerful airflow for styles that last up to all day.*



**WET-OR-DRY
FUSION AIR STRAIGHTENER**

Silky, shiny, pin-straight styles



**WET-OR-DRY
FUSION BRUSH**

Smooth blowouts with volume, bounce, and shine

From post-shower to post-gym,
FlexFusion™ delivers daily salon-quality styles.



WET TO WOW STYLE WET HAIR

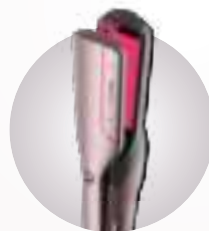
Simultaneously dry and style with lower temperatures without compromising your look or hair health.



FUSION FINISH RE-STYLE DRY HAIR

Style with FlexFusion™ tools to refresh and revive your hair without a wash, simplifying your next-day routine. Or, use after styling wet hair for a sleek finish without the frizz.

*Based on 8-hour user testing.

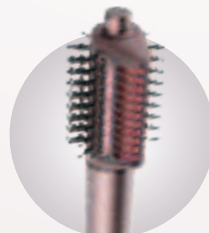


**WET-OR-DRY
FUSION AIR STRAIGHTENER**

BEFORE



AFTER



**WET-OR-DRY
FUSION BRUSH**

BEFORE



AFTER



**FRIZZFIGHTER™
FINISHING TOOL**

BEFORE



AFTER

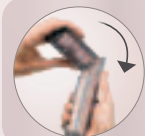


UNLOCK ENDLESS STYLING OPTIONS.

1

ROUGH DRY

Dry your hair until just slightly damp. Activate Scalp Shield while drying roots to improve scalp comfort and protect new hair growth.



Rotate to Dryer:

Pull down the latch below the hinge and rotate top of wand to the left.

2

WET TO WOW

Choose your accessory and style with no heat damage. Toggle to Wet Mode—LED will turn **BLUE**.



Attach Accessory:

Line up open arrow on accessory with arrow on back of wand. Insert and twist left so the solid arrows mirror one another and the two parts click into place.

3

FUSION FINISH

Toggle to Dry Mode. Wait for LED to turn **GREEN** and airflow to turn on. This indicates the tool has reached temperature.



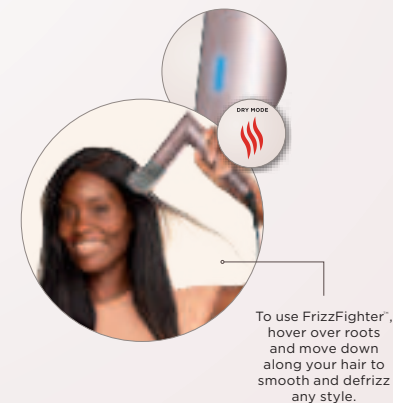
Hot Tip:

Use Dry Mode to freshen up ponytail creases, bedhead, hat hair, and more.

4

TOUCH UP

For touch-ups with FrizzFighter™, toggle to Dry Mode—LED will turn **BLUE**.



Keep your FlexFusion™ working like new.

Scan for easy maintenance.

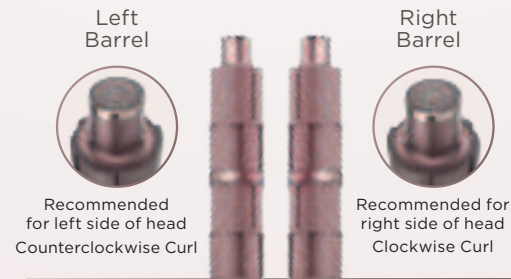
CHANGE THE WAY YOU CURL.™

Recommended Setting:  air  |  temp 



- 1** Begin with slightly damp hair. Separate the top and bottom sections of your hair.

Pro Tip: Apply hair products or styling agents as desired.

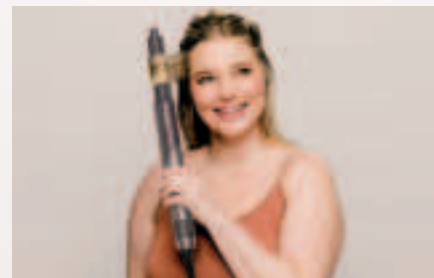


- 2** Select the direction of the curls by choosing the corresponding barrel.

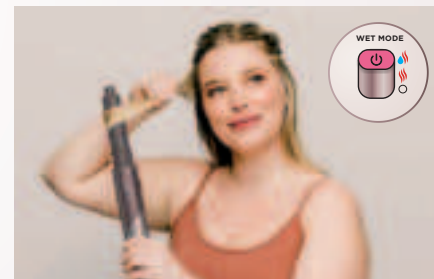


- 3** Hold the middle of a 1/2-inch-to-1-inch section of hair. Let the ends dangle.

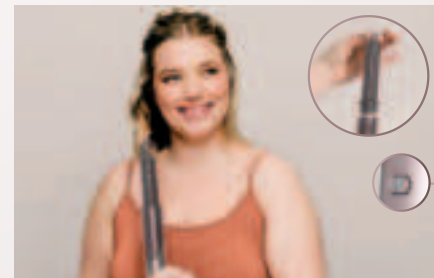
Pro Tip: Grab a section of hair that is a consistent length.



- 5** Once the ends wrap, let go of the hair section and slowly bring the barrel directly to the roots, allowing the hair to continue to wrap itself around the barrel—no need to twist the wand.



- 4** Turn on the styling wand. Bring the barrel behind the dangling ends. The ends will automatically wrap around the barrel—no need to manually wrap.



- 6** For the best results and to avoid heat damage, hold the barrel in place for 10 seconds, then press and hold the Cool Shot button for at least 10 seconds. Repeat as needed until hair is dry. Turn off the styling wand and pull the barrel straight down to reveal your curl.

Pro Tip: Use a setting or holding spray as desired for an even longer-lasting look.



HD600_QSG_BYO_MP_Mv4

© 2024 Shark Ninja Operating LLC.

SHARK is a registered trademark of SharkNinja.

CHANGE THE WAY YOU CURL, FLEXFUSION and FRIZZFIGHTER
are trademarks of SharkNinja Operating LLC.