

Features

- Compact Design
- Preset Limit Switches
- Input Voltage 24VDC
- Stroke 300mm
- IP54
- Duty Cycle 25%

RS PRO Linear Actuators

RS Stock No.: 177-4497



RS PRO is the own brand of RS. The RS PRO Seal of Approval is your assurance of professional quality, a guarantee that every part is rigorously tested, inspected, and audited against demanding standards. Making RS PRO the Smart Choice for our customers.

Product Description

LD3 has a compact design, suitable for various applications that require limited installation space. Such as adjustable tilting, raising or moving a variety of mechanical parts used in Industrial, furniture and mobility products.

Main Application: Industrial, homecare, furniture

General Specifications

Actuator Type	ACME Screw
Motor Technology	DC Motor
Control	S - Limit Switch
Series	LD3
Colour	Grey
Duty Cycle	25% or 5 min of continuous operation in 20 min.
Housing	Cast aluminum, coated for outdoor use and in harsh conditions

Electrical Specifications

Input Voltage	24VDC
Current No Load	0.6A at 24VDC
Current Full Load	1.6A at 24VDC
Motor Power	38W
Maximum Acceleration	N/A
Maximum Load	500N Push/Pull
Maximum Speed No Load	14.6mm/s
Maximum Speed Full Load	12.3mm/s
No Load Torque	N/A
Maximum Force Lifting	500N
Noise Level	≤70dB
Motor	Permanent magnet motor 12V DC/ 5000rpm
Cable	Motor: 2 x 14 AWG PVC cable
Positioning Feedback	No
Connection	Unterminated Cable

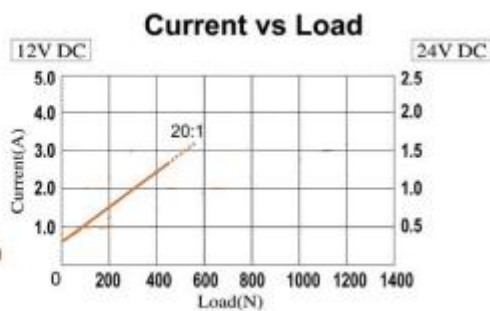
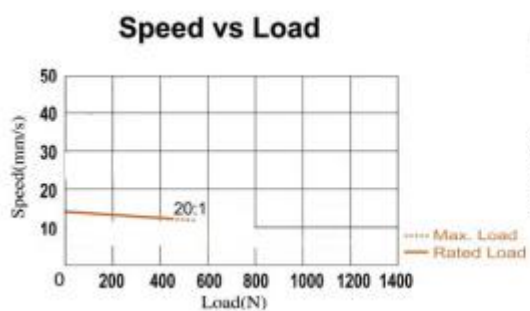
Mechanical Specifications

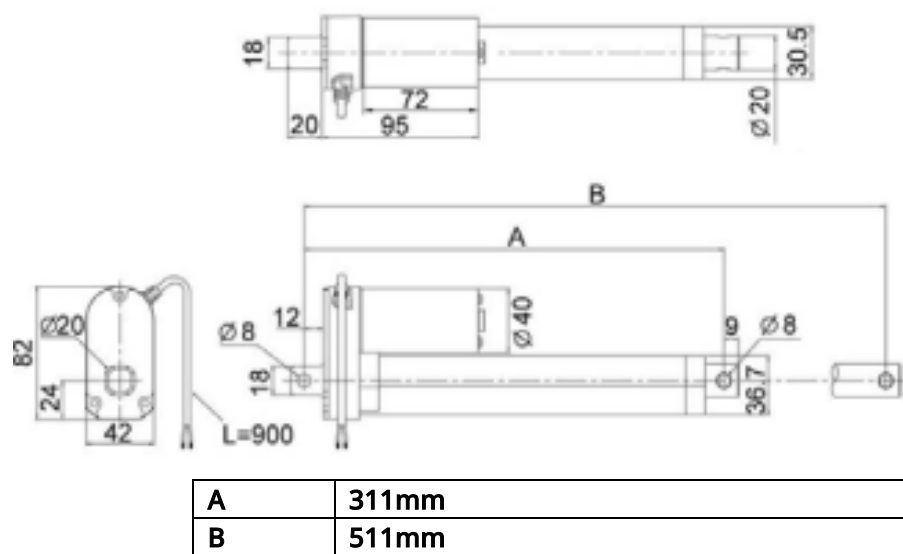
Maximum Stroke Length	300mm
Brake	N/A
Spindle Type	Pitch=6mm Double thread
Gear Ratio	20:1
Front Connector	Drilled Hole, 8mm
Rear Connector	Drilled Hole, 8mm
Clevis Ends	No
Screw	ACME screw
Overall Length Closed	430mm
Weight	1.2Kg or 1200g
Ambient Operation Temperature	-25°C to 65°C
Storage Temperature	-25°C to 65°C
IP Rating	IP54

Approvals

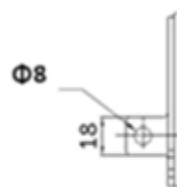
Compliance/Certifications	CE / EN55014-1:2017+A11:2020
Declarations	EN 55014-2:2015

Other Specifications





◆ Rear connector



Wiring

	Wire Color	Definition	Description
Power Wires	Red	DC Power	Connect red wire to “Vdc +” & black wire to “Vdc -“of DC power to extend the actuator. Switch the polarity of DC input to retract it.
	Black		