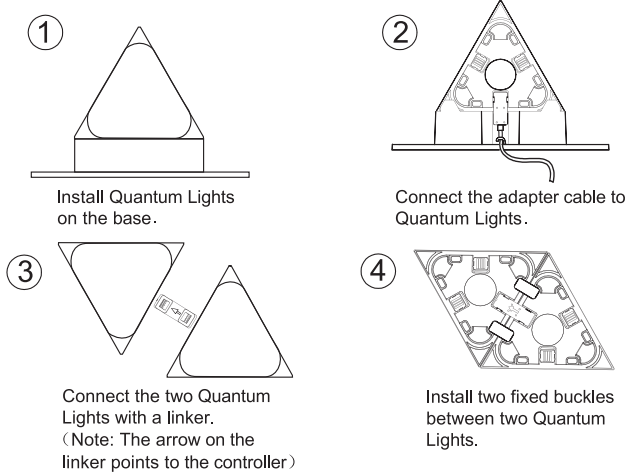
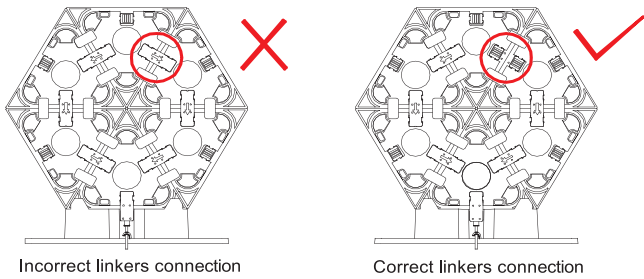


Installation Instructions



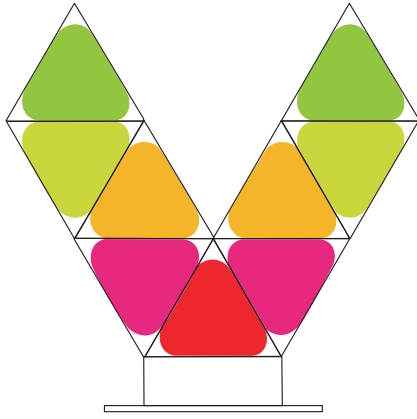
When connecting with linkers, avoid linkers forming a current circuit.



Safety Precautions

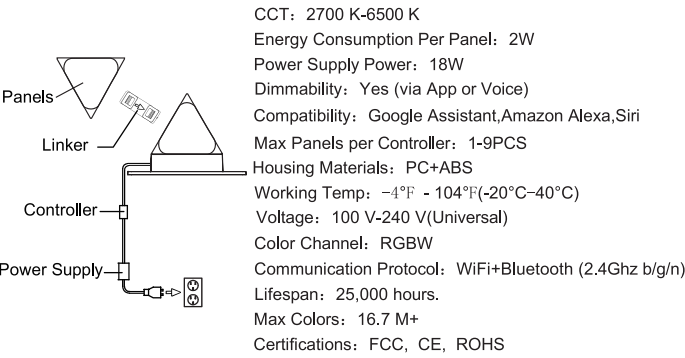
- ⚠ Do not use metal or conductors to approach any exposed parts, such as controller connectors, power connectors, linkers and slots on the back of the light panels;
- ⚠ The product is not waterproof, please do not wash or touch water;
- ⚠ Do not leave the power cord idle on the ground to avoid stumbling;
- ⚠ Children who are not supervised by adults are not allowed to use this product alone. If some parts of this product are imported, there is a risk of choking.

Quantum Lights
USER'S MANUAL



正面

Basic Parameter



* The arrow on the linker points to the controller.

Instruction Manual for Controller function.

- 🎵 ● 7 musical scenes
- S ● Mode(dynamic scene)
- M ● Color(static scene)
- 🔌 ● ON/OFF

1. Long press the button for about 10 seconds when the light is onto enter the distribution network state.
2. Turn on/off three times can also enter the distribution network state.
Note: if the panel is red color and no response, please power off once.

Operation steps of mobile APP connection:

1. Download APP from store or website:

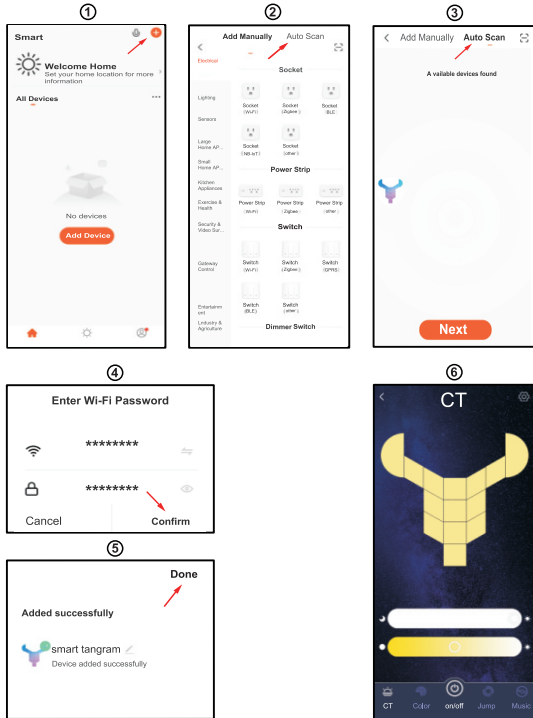


APP:Smart Life



APP:Tuya Smart

2. Open WIFI(2.4Ghz) and Bluetooth, enter APP, and perform operations:



FCC Statement
Changes or modifications not expressly approved by the party responsible for compliance could void the user's authority to operate the equipment.
This equipment has been tested and found to comply with the limits for a Class B digital device, pursuant to Part 15 of the FCC Rules. These limits are designed to provide reasonable protection against harmful interference in a residential installation. This equipment generates uses and can radiate radio frequency energy and, if not installed and used in accordance with the instructions, may cause harmful interference to radio communications. However, there is no guarantee that interference will not occur in a particular installation. If this equipment does cause harmful interference to radio or television reception, which can be determined by turning the equipment off and on, the user is encouraged to try to correct the interference by one or more of the following measures:
-- Reorient or relocate the receiving antenna.
-- Increase the separation between the equipment and receiver.
-- Connect the equipment into an outlet on a circuit different from that to which the receiver is connected.
-- Consult the dealer or an experienced radio/TV technician for help
This device complies with part 15 of the FCC rules. Operation is subject to the following two conditions (1) this device may not cause harmful interference, and (2) this device must accept any interference received, including interference that may cause undesired operation.

反面

成品尺寸： 160*100MM

FCC Caution.

This device complies with part 15 of the FCC Rules. Operation is subject to the following two conditions:
(1) This device may not cause harmful interference, and (2) this device must accept any interference received, including interference that may cause undesired operation.

Any Changes or modifications not expressly approved by the party responsible for compliance could void the user's authority to operate the equipment.

Note: This equipment has been tested and found to comply with the limits for a Class B digital device, pursuant to part 15 of the FCC Rules. These limits are designed to provide reasonable protection against harmful interference in a residential installation. This equipment generates uses and can radiate radio frequency energy and, if not installed and used in accordance with the instructions, may cause harmful interference to radio communications. However, there is no guarantee that interference will not occur in a particular installation. If this equipment does cause harmful interference to radio or television reception, which can be determined by turning the equipment off and on, the user is encouraged to try to correct the interference by one or more of the following measures:

- Reorient or relocate the receiving antenna.
- Increase the separation between the equipment and receiver.
- Connect the equipment into an outlet on a circuit different from that to which the receiver is connected.
- Consult the dealer or an experienced radio/TV technician for help.

*RF warning for Mobile device:

This equipment complies with FCC radiation exposure limits set forth for an uncontrolled environment. This equipment should be installed and operated with minimum distance 20cm between the radiator & your body.