

Shark APEX®

DuoClean® PowerFins™ with Self-Cleaning Brushroll Powered Lift-Away® Upright Vacuum

OWNER’S GUIDE

DUOclean™ POWERFINS™
with Self-Cleaning Brushroll

It’s important to read this manual prior to using your new product for the first time.



804106601

IMPORTANT SAFETY INSTRUCTIONS

HOUSEHOLD USE ONLY

To reduce the risk of electric shock, this vacuum cleaner has a polarized plug (one blade is wider than the other). As a safety feature, this plug will fit into a polarized outlet only one way. If the plug does not fit fully into the outlet, reverse the plug. If it still does not fit, contact a qualified electrician. DO NOT force into outlet or try to modify to fit.

⚠ WARNING

TO REDUCE THE RISK OF FIRE, ELECTRIC SHOCK OR INJURY:

GENERAL WARNINGS

When using an electrical appliance, basic precautions should always be followed, including the following:

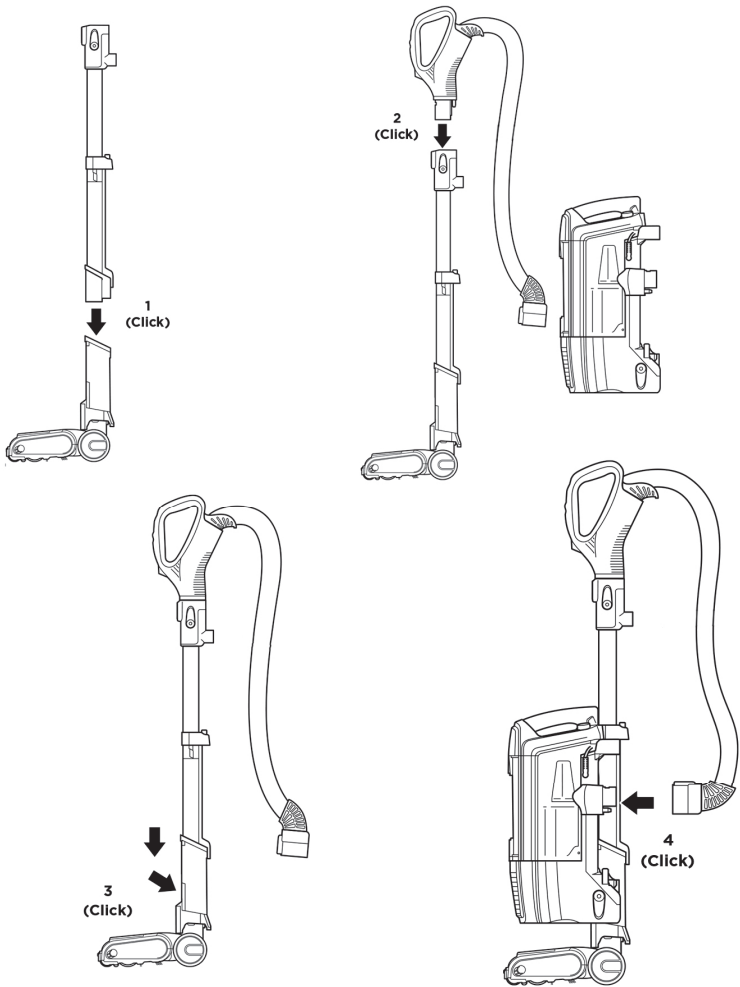
1. Inspect power cord and plug for any damage before use. **DO NOT** use vacuum cleaner with a damaged cord or plug. Turn off all controls before plugging in or unplugging the vacuum cleaner. Store your vacuum cleaner with the power cord secured around the two cord hooks. To minimize the risk of power cord damage, do not allow the motorized brush roll to ingest the cord. If this occurs, immediately shut off power to the vacuum and remove the cord.
2. Your vacuum cleaner may consist of a motorized nozzle, wand, hose, and/or vacuum pod. This device contains electrical connections, electrical wiring, and moving parts that potentially present risk to the user.
3. Use only identical replacement parts.
4. Carefully observe and follow the instructions provided below to avoid improper use of the appliance. **DO NOT** use the vacuum for any purpose other than those described in this manual.
5. Before use, carefully inspect all parts for any damage. **DO NOT** use if any parts are damaged.
6. The use of an extension cord is **NOT** recommended.
7. This vacuum cleaner contains no serviceable parts.

USE WARNINGS

8. This appliance can be used by persons with reduced physical, sensory or mental capabilities or lack of experience and knowledge if they have been given supervision or instruction concerning use of the appliance in a safe way and understand the hazards involved. Cleaning and user maintenance shall not be made by children. Keep the appliance and its cord out of reach of children. **DO NOT** allow the appliance to be used by children. **DO NOT** allow to be used as a toy. Close supervision is necessary when used near children.
9. Always turn off the vacuum cleaner before connecting or disconnecting any motorized nozzles or other accessories.
10. **DO NOT** handle plug or vacuum cleaner with wet hands.
11. **DO NOT** use without filters in place.
12. Only use Shark® branded filters and accessories.
13. **DO NOT** damage the power cord:
 - a) **DO NOT** pull or carry vacuum cleaner by the cord or use the cord as a handle.
 - b) **DO NOT** unplug by pulling on cord. Grasp the plug, not the cord.
 - c) **DO NOT** run the vacuum cleaner over the power cord, close a door on the cord, pull the cord around sharp corners, or leave the cord near heated surfaces.
14. **DO NOT** put any objects into nozzle or accessory openings. **DO NOT** use with any opening blocked; keep free of dust, lint, hair, and anything that may reduce airflow.
15. **DO NOT** use if nozzle or accessory airflow is restricted. If the air paths or the motorized floor nozzle become blocked, turn the

- vacuum cleaner off and unplug from electrical outlet. Remove all obstructions before you plug in and turn on the unit again.
16. Keep nozzle and all vacuum openings away from hair, face, fingers, uncovered feet, or loose clothing.
17. **DO NOT** use if vacuum cleaner is not working as it should, or has been dropped, damaged, left outdoors, or dropped into water.
18. Use extra care when cleaning on stairs.
19. **DO NOT** leave the vacuum cleaner unattended while plugged in.
20. When powered on, keep the vacuum cleaner moving over the carpet surface at all times to avoid damaging the carpet fibers.
21. **DO NOT** place vacuum cleaner on unstable surfaces such as chairs or tables.
22. Your Shark® vacuum may not be designed to stand up on its own. When taking a break from cleaning, you may need to lean it against furniture or a wall, or lay it flat on the floor. Using the vacuum for an application where the unit lacks stability may result in personal injury.
23. **DO NOT** use to pick up:
 - a) Liquids
 - b) Large objects
 - c) Hard or sharp objects (glass, nails, screws, or coins)
 - d) Large quantities of dust (drywall dust, fireplace ash, or embers). **DO NOT** use as an attachment to power tools for dust collection.
 - e) Smoking or burning objects (hot coals, cigarette butts, or matches)
 - f) Flammable or combustible materials (lighter fluid, gasoline, or kerosene)
 - g) Toxic materials (chlorine bleach, ammonia, or drain cleaner)
24. **DO NOT** use in the following areas:
 - a) Poorly lit areas
 - b) Wet or damp surfaces
 - c) Outdoor areas
 - d) Spaces that are enclosed and may contain explosive or toxic fumes or vapors (lighter fluid, gasoline, kerosene, paint, paint thinners, mothproofing substances, or flammable dust)
25. Turn off all controls before plugging in or unplugging the vacuum.
26. Unplug from electrical outlet when not in use and before any maintenance or cleaning.
27. Hand wash with water only. Washing with cleaning chemicals could damage the unit.
28. During cleaning or routine maintenance, **DO NOT** cut anything other than hair, fibers, or string wrapped around the brushroll.
29. Allow all filters to air-dry completely before replacing in the vacuum to prevent liquid from being drawn into electric parts.
30. Make sure the dust cup and all filters are in place after routine maintenance.
31. If provided, secure the power cord around the two cord hooks during storage.

ASSEMBLY

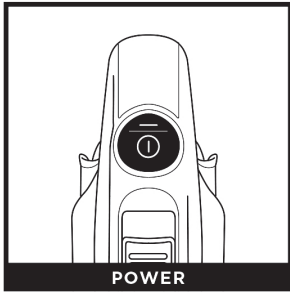


1. Insert **Wand** into **Floor Nozzle**.
2. Insert **Handle** into wand.
3. Attach **Pod** to wand.
4. Insert **Hose** into pod.

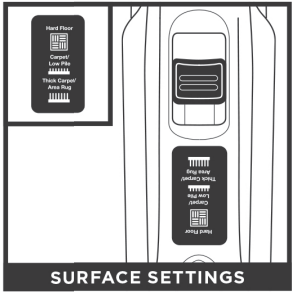
For proper operation, ensure all parts are firmly clicked into place.

WHOLE-HOME CLEANING

SETTINGS



Press power button to turn on vacuum. Please note the **Brushrolls** will not spin unless the wand is reclined.



Choose the appropriate setting.

Thick Carpet & Area Rug Cleaning

Set surface selector to Thick Carpet/Area Rug for improved maneuverability on high pile carpet.

Carpet & Low Pile Cleaning

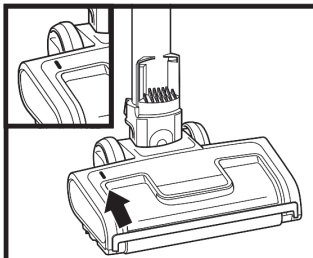
Set surface selector to Carpet/Low Pile to increase the speed of the brushrolls and to help remove stuck-on dust and debris.

Hard Floor Cleaning

Set surface selector to Hard Floor.

NOTE: Accessories may vary depending on the model. Refer to quick guide, if available. The images shown here are for illustrative purposes only and may be subject to change.

BRUSHROLL INDICATOR LIGHT



NOTE: Brushrolls spin in all modes.

WHAT DOES THE BRUSHROLL INDICATOR LIGHT MEAN?

Solid Green: The brushrolls are spinning and working as they should.

Solid Red: There is a jam in the brushroll area. Turn your vacuum off and remove any blockages in the nozzle.

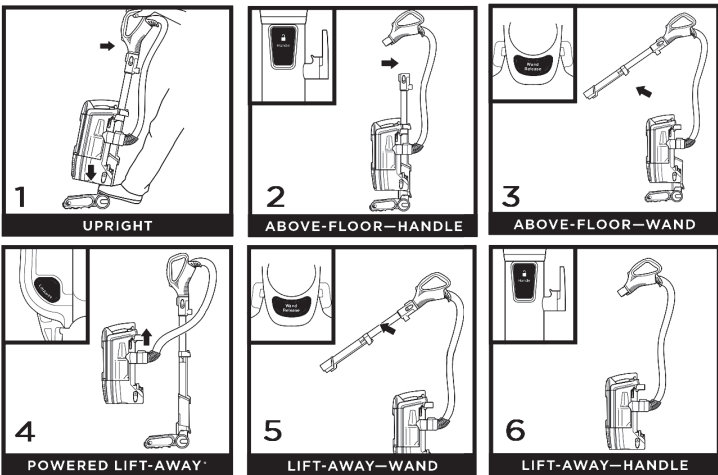
Flashing Red: The motorized floor nozzle is overheating. Turn off the vacuum, unplug it, and remove any blockages. Let the vacuum cool down for at least 60 minutes before restarting. See Troubleshooting section for more information.

Flashing Green: The vacuum is operating in an environment that is either too hot or too cold. This vacuum will only function properly in temperatures ranging from 32°F (0°C) to 104°F (40°C). Turn the vacuum off and adjust the room temperature. Once the temperature has reached the operating range, turn the vacuum back on.

NOTE: For deep cleaning per ASTM F 608 (embedded dirt in carpets) please set to Carpet/Low Pile. For particularly stubborn stuck-on dust messes, set to Carpet/Low Pile mode.

WHOLE-HOME CLEANING

CLEANING MODES



1. To engage brushrolls, turn on power, then step on floor nozzle and tilt handle back.
 2. Press the **Handle** button to detach the handle from the wand.
 3. Press the **Wand Release** button to detach the wand from the pod.
 4. Press the **Lift-Away** button to detach the pod from the floor nozzle.
 5. With pod removed, press the Handle button to detach the handle from the wand.
 6. With pod removed, press the Wand Release button to detach the wand from the floor nozzle.
- NOTE:** All accessories are compatible with both the wand and the handle.

SAVE THESE INSTRUCTIONS

EMPTYING THE DUST CUP

1.

2.

3.

4.

1.

2.

3.

4.

1.

2.

3.

4.

1.

2.

3.

4.

1.

2.

3.

4.

1.

2.

3.

4.

1.

2.

3.

4.

1.

2.

3.

4.

1.

2.

3.

4.

1.

2.

3.

4.

1.

2.

3.

4.

1.

2.

3.

4.

1.

2.

3.

4.

1.

2.

3.

4.

1.

2.

3.

4.

1.

2.

3.

4.

1.

2.

3.

4.

1.

2.

3.

4.

1.

2.

3.

4.

1.

2.

3.

4.

1.

2.

3.

4.

1.

2.

3.

4.

1.

2.

3.

4.

1.

2.

3.

4.

1.

2.

3.

4.

1.

2.

3.

4.

1.

2.

3.

4.

1.

2.

3.

4.

1.

2.

3.

4.

1.

2.

3.

4.

1.

2.

3.

4.

1.

2.

3.

4.

1.

2.

3.

4.

1.

2.

3.

4.

1.

2.

3.

4.

1.

2.

3.

4.

1.

2.

3.

4.

1.

2.

3.

4.

1.

2.

3.

4.

1.

2.

3.

4.

1.

2.

3.

4.

1.

2.

3.

4.

1.

2.

3.

4.

1.

2.

3.

4.

1.

2.

3.

4.

1.

2.

3.

4.

1.

2.

3.

4.

1.

2.

3.

4.

1.

2.

3.

4.

1.

2.

3.

4.

1.

2.

3.

4.

1.

2.

3.

4.

1.

2.

3.

4.

1.

2.

3.

4.

1.

2.

</

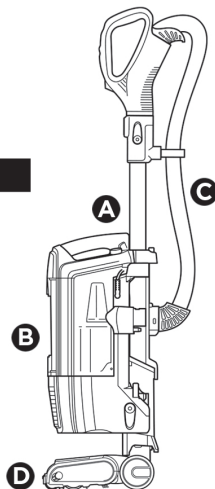
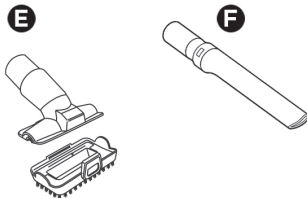
Please be sure to read the enclosed Shark® Owner's Guide prior to using your unit.

Shark

QUICK START GUIDE

WHAT'S INSIDE

- A** Wand
- B** Vacuum Pod
- C** Handle & Hose
- D** Floor Nozzle
- E** Pet Multi-Tool
- F** Crevice Tool



NOTE: The images shown here are for illustrative purpose only and may vary.



8 0 4 0 0 6 6 0 1

PRINTED IN MEXICO

Elbrd: M. C

OBPN: OBOX

SC: 10-20-2021_5P

SHNMDL: AZ1501_B