



LINPA WORLD

User Manual


Bluetooth Wireless Earbuds Linpa T3

Note

TO ACTIVATE YOUR 12+6 MONTHS WARRANTY

PLEASE VISIT NOW

CUSTOMER SERVICE

 Facebook: @LinpaOfficial

 support@linpaworld.com



NOTE

If the earbuds freeze due to misuse, please press and hold the earbuds for 10 seconds to reboot the earbuds. Or email support@linpaworld.com for help.

Connection

Pair with Your Device :



Bluetooth®

Linpa T3 

Choose "Linpa T3"

Taking the earbuds from the charging case, the left LED lights flash red and white, the right LED lights off. (Make sure tear off transparent static sticker on the bottom of the earbuds)

Connected

The LED light off

Tips:

- The earbuds will turn off automatically if there is no connection within 5 minutes after power on.
- The earbuds will automatically turn off if there is no playback within 30 minutes after pairing.
- The earbuds will turn off automatically within 5 minutes when turn off the device Bluetooth after pairing.



Pairing issues

The left and right sides can be used separately. The right earbud is the secondary, which will take a little longer to connect.

When one side works, how do I switch my earbuds from single mode to stereo mode?

Step 1->: Put them back to the case.

Step 2->: Delete "Linpa T3" from Bluetooth menu on your device, if your device has been connected "Linpa T3" .

Step 3->: Taking the earbuds from the charging case, both earbuds turn on, the LED lights flash red and white, Double-click any earbud, the two earbuds will be forced to pair. After the two earbuds are successfully paired, the left light turns off and the right alternately flashes red and white.

Step 4->: Turn on the phone's Bluetooth and choose "Linpa T3" to pair. The earphones will automatically pair with the phone afterwards.

Step 5->: If prompted, enter code "0000".

Controls

Music

Short press	Play/pause songs
Double click(Left)	Previous track
Double click(Right)	Next track

Calling

Press	Answer/End Call
Long press 2 seconds	Reject the call
Long press 1 second	Reject third party calls
Double click	Connect a new call while retaining the current call
Three-party call	Double-click to switch between the second party and the third party, and there is a 'didi' prompt when switching calls.

Activate Siri/Other Voice Control Software

Connected to your phone/device

Long press for 2 seconds
and other voice assistants

Turn On/Off

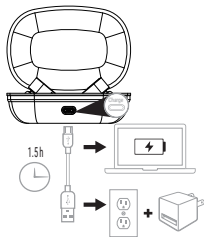
Take the earbuds from the charging case,
it will automatically turn on. Or manually
press 1s in the off state.

Red and white lights flash
alternately 3 times

Long press 5 seconds

Red lights flash 3 times




Charging





① Please check the power adaptor if it is 5V with good quality. [Please don't use 6v, 9v, or 12v chargers to avoid the risk of burning the chip]

② Clean the thimble and contacts with alcohol to ensure that the headphone charging contact is conductive.

Earbud status indicator

	Red light flashes slowly	Low battery
	LED steady red	Charging
	LED light off	Fully charged

Charging case status indicator

	LED steady red	Charging
	LED light off	Fully charged



FAQ

Q: The sound quality of the headphones is not good?

A: For all of the headphone products, they need a period of use to get better sound quality. Some components, such as diaphragm unit, transistors, integrated circuits, and capacitance, and can be stabilized after a period of use.

Q: Why cannot synchronize the volume?

A: Our products are mainly compatible with iPhone, Samsung, and other mainstream mobile phones, Due to too many Android systems, our headsets cannot match all types of Android systems. If the volume cannot synchronize, please manually adjust the volume on the phone or computer.

Q: How to keep clear calls?

A: When using with a phone call, please turn the volume to the maximum to avoid making calls in noisy environments, such as subways and buses. These places will affect the signal connection and stability of the earbuds.

Q: How to deal with the stuck signal of the earphone?

A: The Bluetooth headphones use the 2.4G frequency band. When it encounters wifi and the base station signal environment is complex, it will automatically switch to the most suitable frequency band. To avoid the frequency hopping, Please use your mobile phone as close as possible to the headphones.



Attention

- The headphone buttons have 3M glue, please do not buckle the button of the headset to avoid falling off
- Do not store the earphone in extreme temperature (under 0°C or over 45°C).
- Do not use this earphone during a thunderstorm to avoid irregular function and increased risk of electric shock.
- Do not use harsh chemicals or strong detergents to clean the earbuds.
- Keep the earbuds dry

Maintenance:

Since our product has a built-in battery, and the battery itself has power consumption issues, please make sure to charge the headset and charging box once a week to prevent the protection board from protecting itself and causing the battery to run low.

Specifications

Model: Linpa T3

Standby Time: One year

Talk/Playing Time: 50 hours (50% volume)

Bluetooth Standard: V5.0

Frequency Range: 2.4GHz

Operating Range: 33 feet/10 meters (No obstacles)

Earphone Battery/Charging Case: 100mah/450mah

Charging Time (Earphones/Charging Case) : 2 hours/1.5 hours