

GRASS TRIMMER & BRUSH CUTTER

Product Instructions

Product No. 2515367

vonhaus

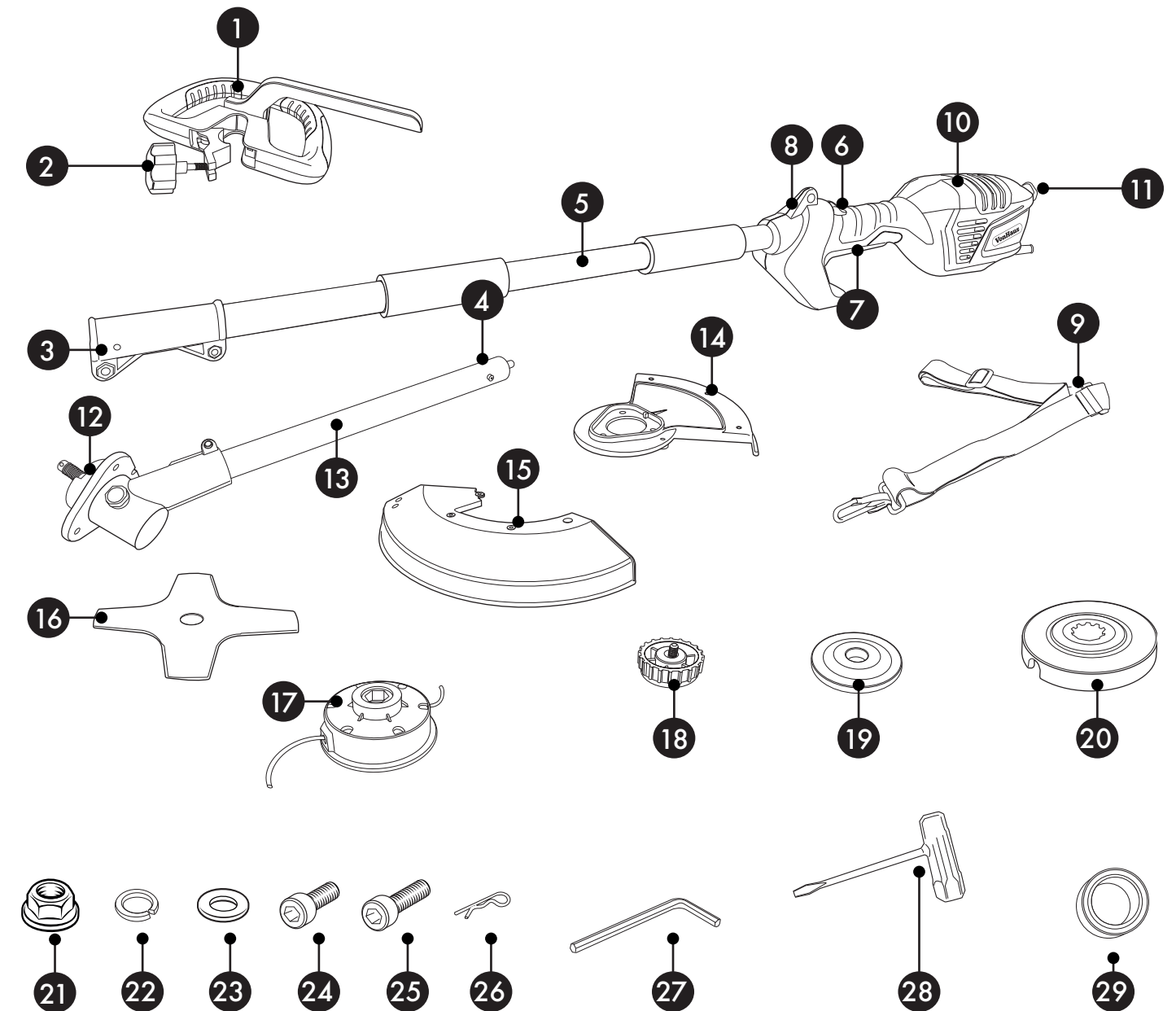
Let's get started!

Visit our product hub for useful tips and tricks on getting the most out of your new product.

SCAN ME



Parts & Components



Need further help?
support@vonhaus.com

See our full range at
www.vonhaus.com

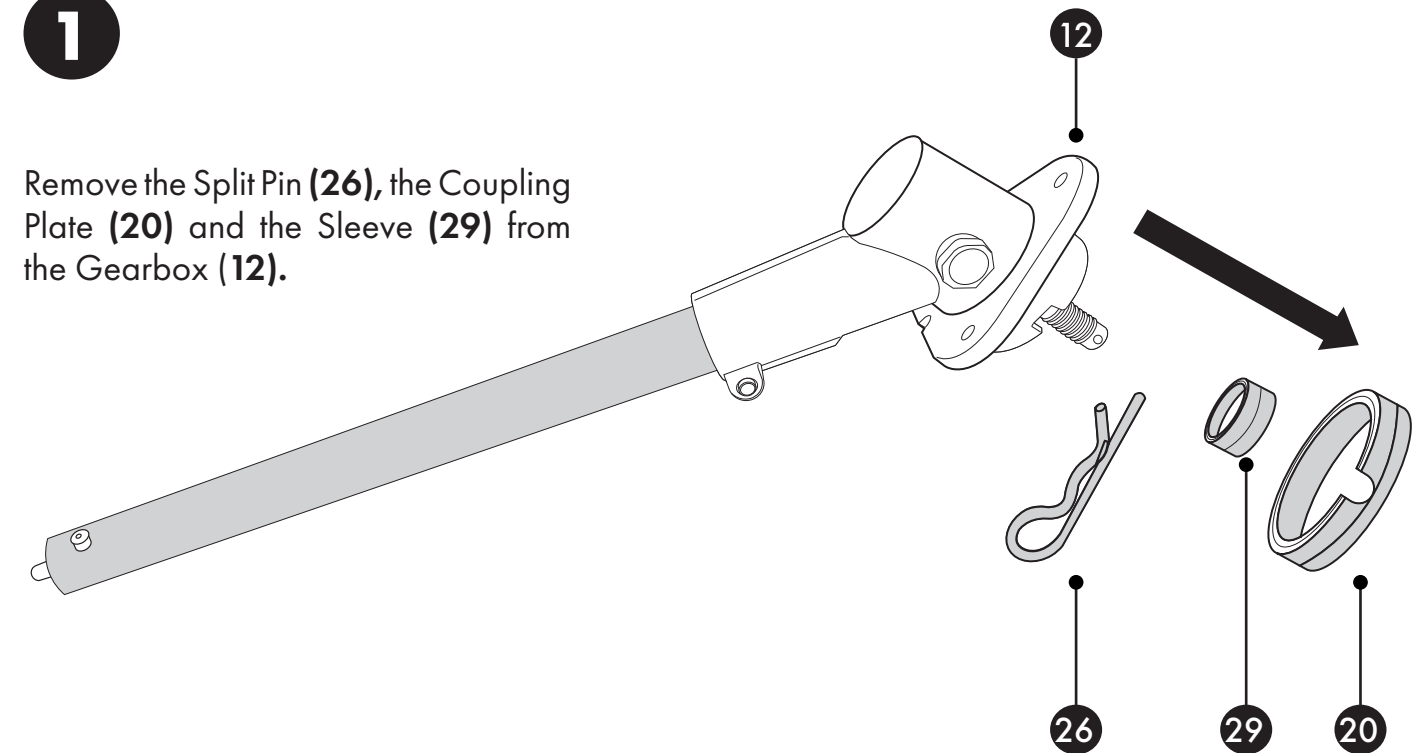
Parts & Components

- | | |
|---|--|
| 1. Handles | 19. Brush Cutter Locking Plate x2
(x1 preassembled onto 12) |
| 2. Handle Locking Screw | 20. Coupling Plate (Preassembled onto 12) |
| 3. Button Hole | 21. Hex Nut x1 (x1 spare) |
| 4. Locking Button | 22. Spring Washer x7
(Preassembled into parts 12 & 14) |
| 5. Main Unit Pole | 23. Washer x7
(Preassembled into part 12 & 14) |
| 6. Safety Switch | 24. Small Hex Bolt x3
(Preassembled into part 12) |
| 7. ON/OFF Trigger | 25. Large Hex Bolt x4
(Preassembled into part 14) |
| 8. Shoulder Strap Connection | 26. Split Pin x1
(Preassembled into parts 12) |
| 9. Shoulder Strap (Preassembled) | 27. Hex Key
(Stored on Handle) |
| 10. Motor Case | 28. Maintenance Tool |
| 11. Cable Hook | 29. Sleeve (Preassembled onto 12) |
| 12. Gearbox | |
| 13. Lower Pole | |
| 14. Mounting Plate | |
| 15. Trimmer Guard | |
| 16. Brush Cutter Disc | |
| 17. Spool | |
| 18. Spool Locking Nut
(Preassembled into 17) | |

Disassembly

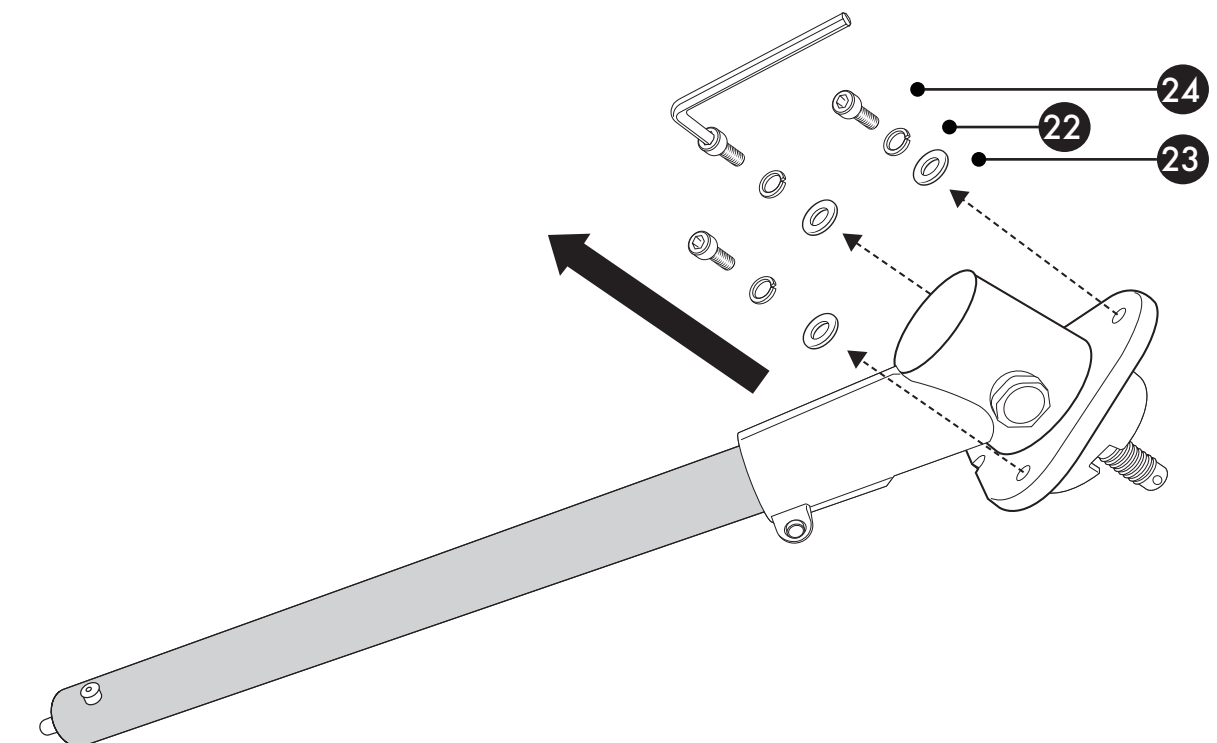
1

Remove the Split Pin **(26)**, the Coupling Plate **(20)** and the Sleeve **(29)** from the Gearbox **(12)**.



Remove parts **22**, **23** and **24** from the Gearbox **(12)**.

2



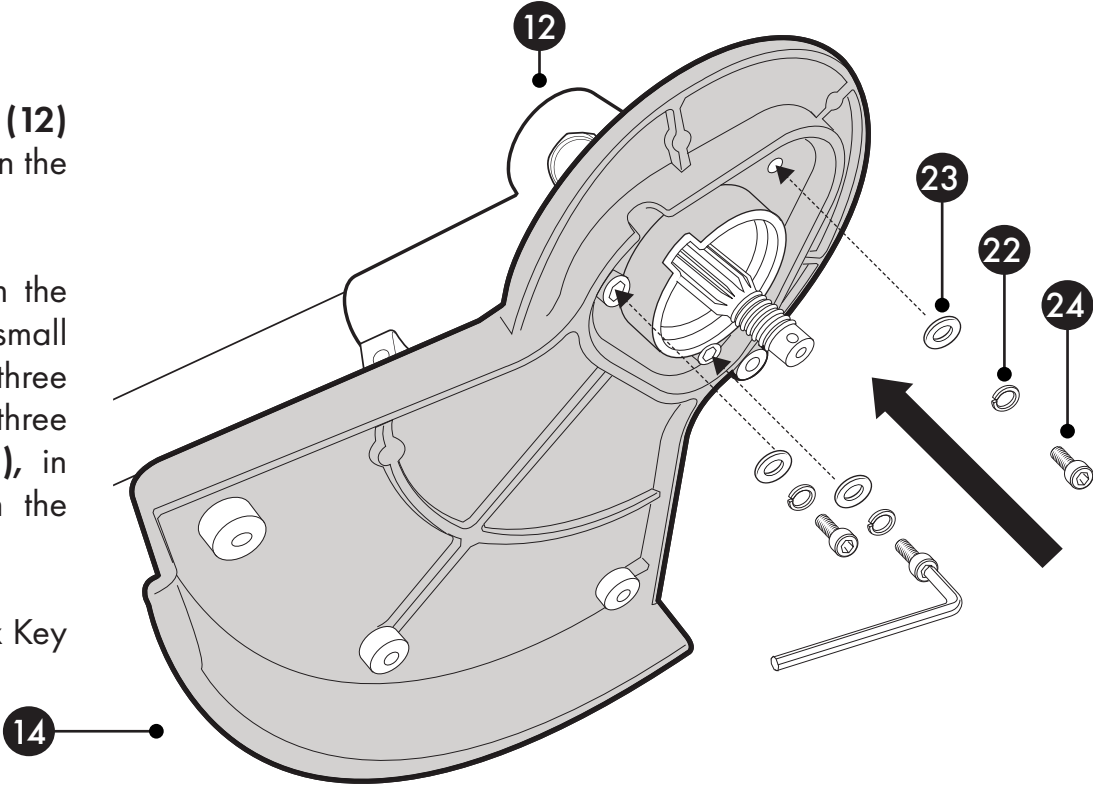
Assembly

3

Align the Gearbox (12) with the three holes on the Mounting Plate (14).

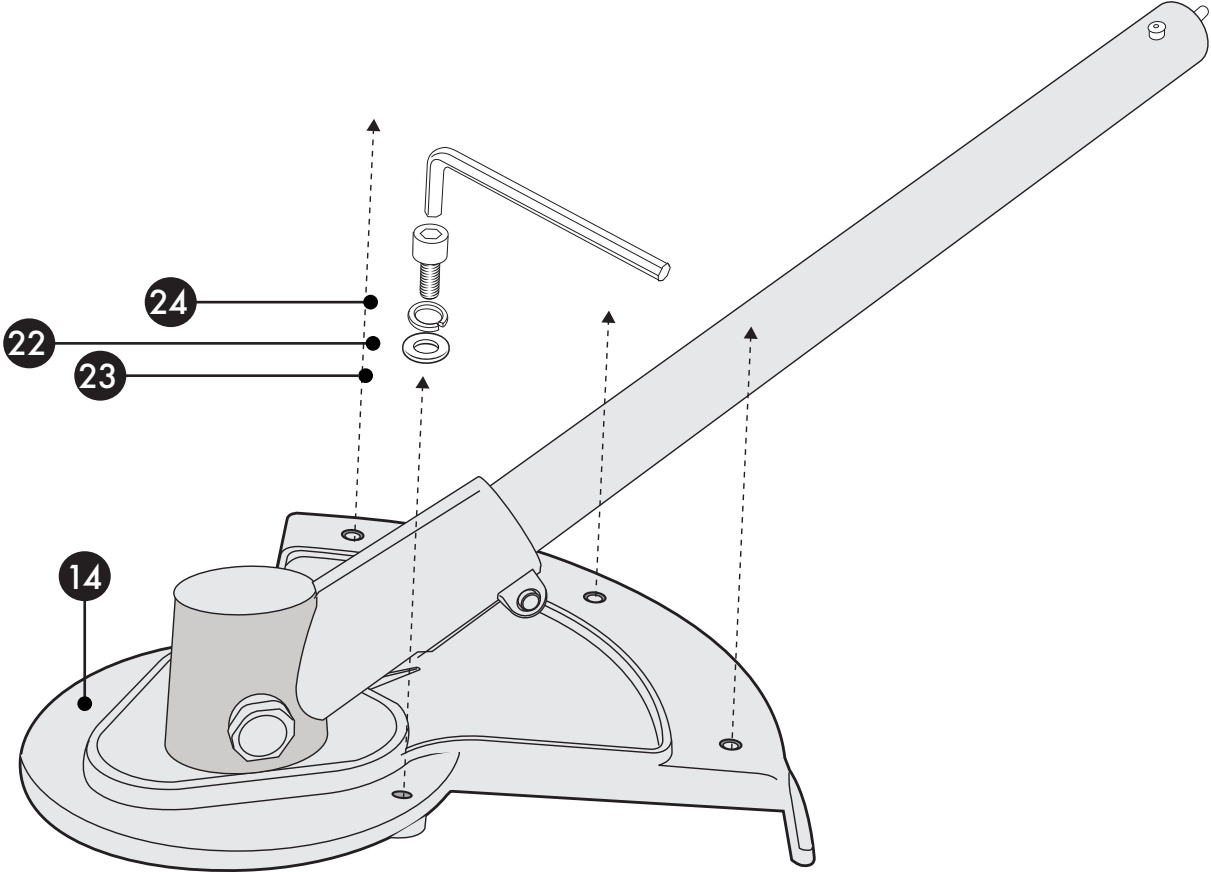
Secure in place from the inside using three small Hex Bolts (24), three Washers (23) and three Spring Washers (22), in the order shown on the right.

Tighten using the Hex Key (27) provided.



Remove 23, 22 and 24 from the Mounting Plate as shown below.

4



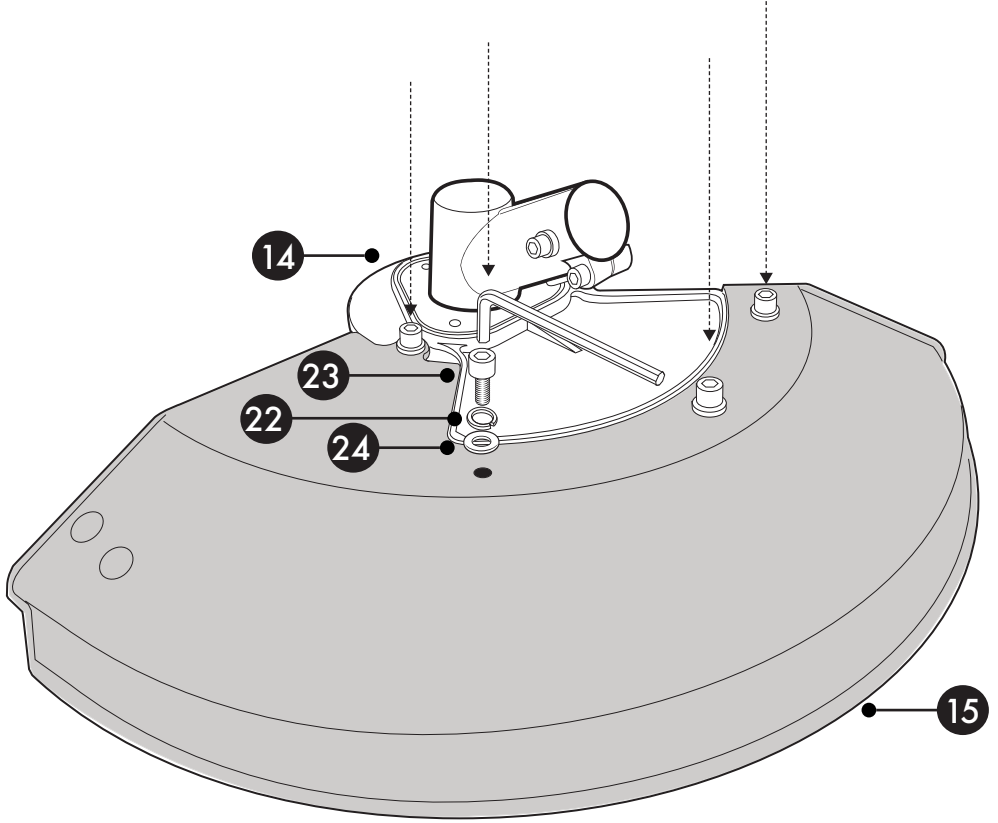
Assembly

5

To attach the Plastic Trimmer Guard (15) to the Mounting Plate (14), and place the Guard on top and align the 4 holes.

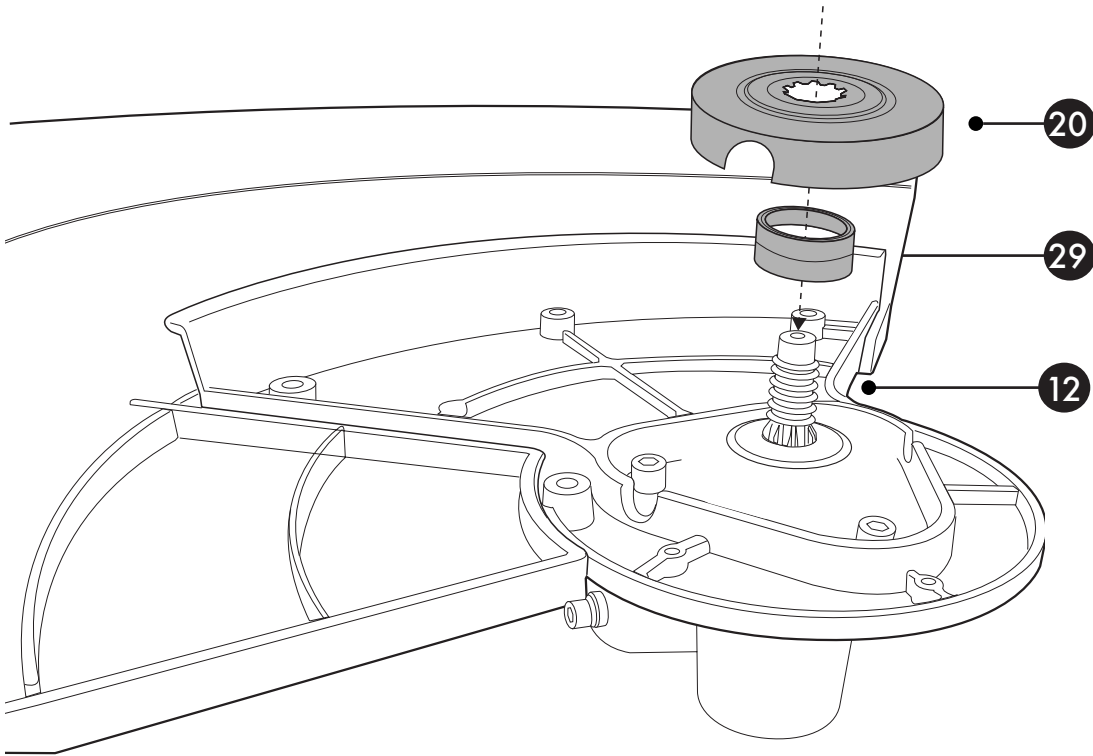
Insert 4 Large Hex Bolts (25) along with the remaining Washers (23) and Spring Washers (22).

Securely tighten using the Hex Key (27) supplied.



Install the Sleeve (29) and the Coupling Plate (20) on the bottom of the Gearbox (12).

6

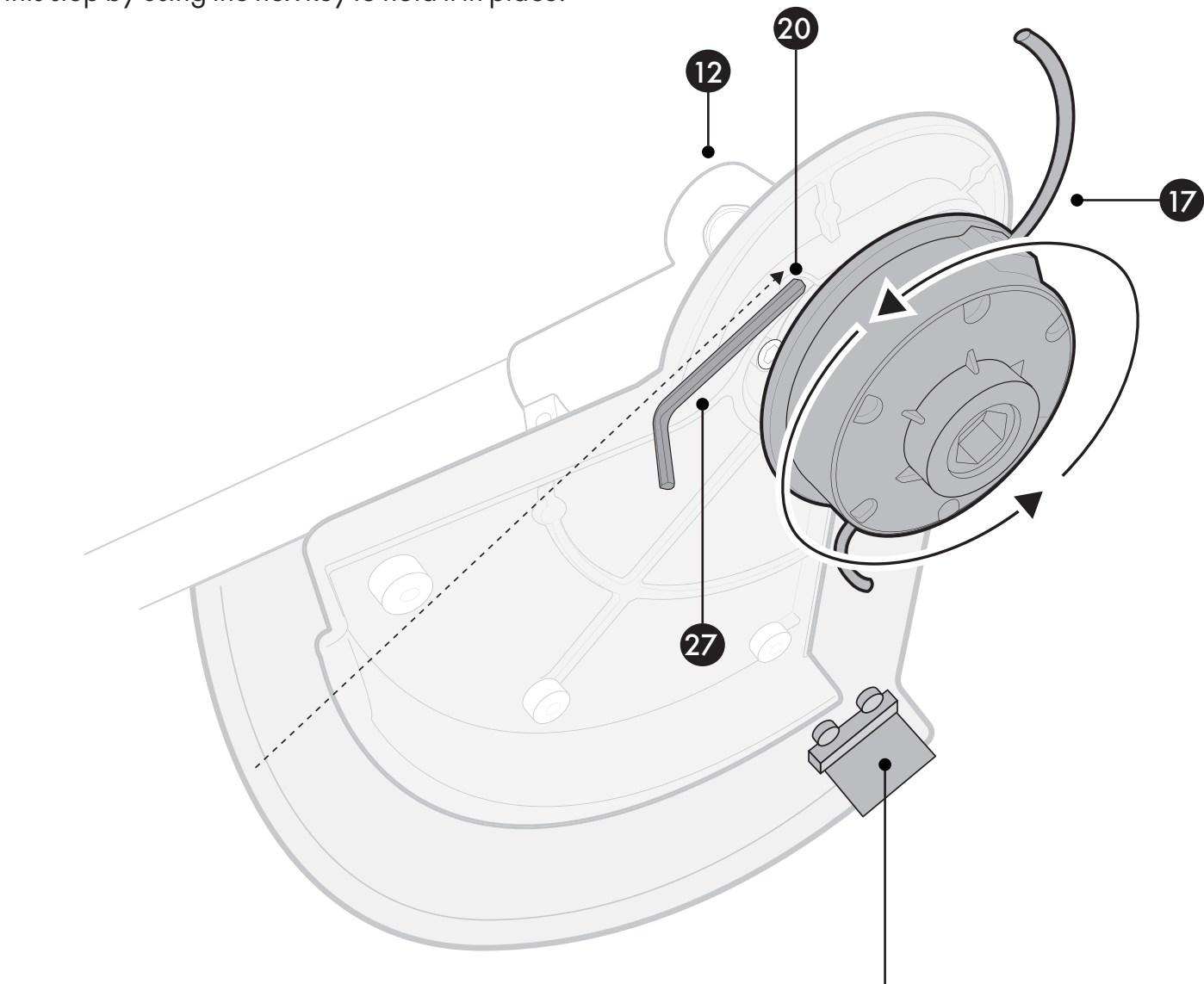


Trimmer Assembly

7

Align the side holes of the Coupling Plate (20) with the Gearbox (12), insert the Hex Key (27), and rotate the Spool (17) anti-clockwise to lock it in place.

Ensure the Drive Shaft does not rotate during this step by using the hex key to hold it in place.



IMPORTANT!

Ensure the Spool Assembly is completely secure before initial use.



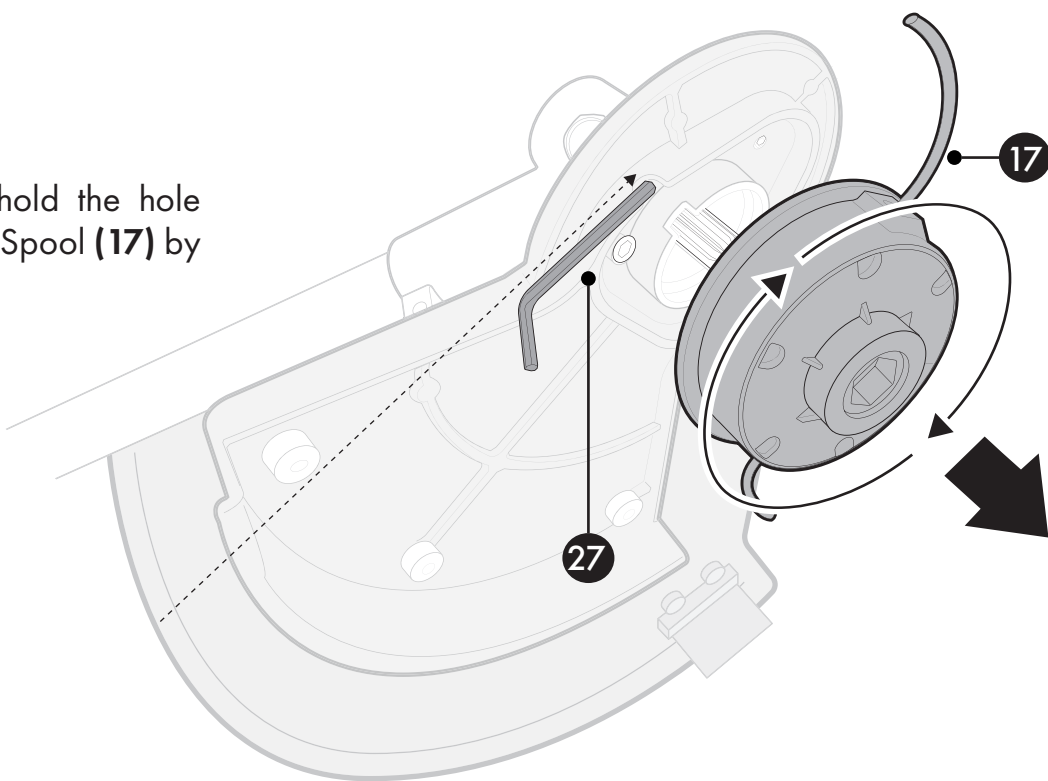
WARNING! Wearing protective gloves, remove the safety tape from the blade.

CAUTION: The blade cuts the spool to exact length on first use, which may cause the spool end to detach suddenly. Wear protective clothing during this process.

Replacing/Rewinding the Spool

1

Use Hex Key (27) to hold the hole steady, then remove the Spool (17) by rotating clockwise.

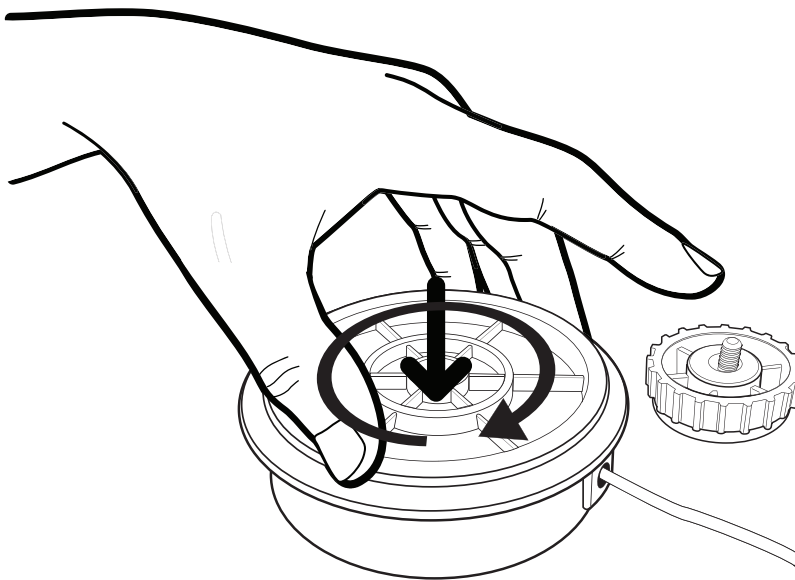


2

To access the Spool thread, gently push the cover down and twist clockwise to unlock.

Carefully lift out the Spool carrier from the case and withdraw the Spool from the eyelets either side.

Wipe clean if necessary using a damp cloth. Upon removal, you will notice a spring beneath the carrier



IMPORTANT!

Ensure the spring is kept in a safe place during any maintenance.

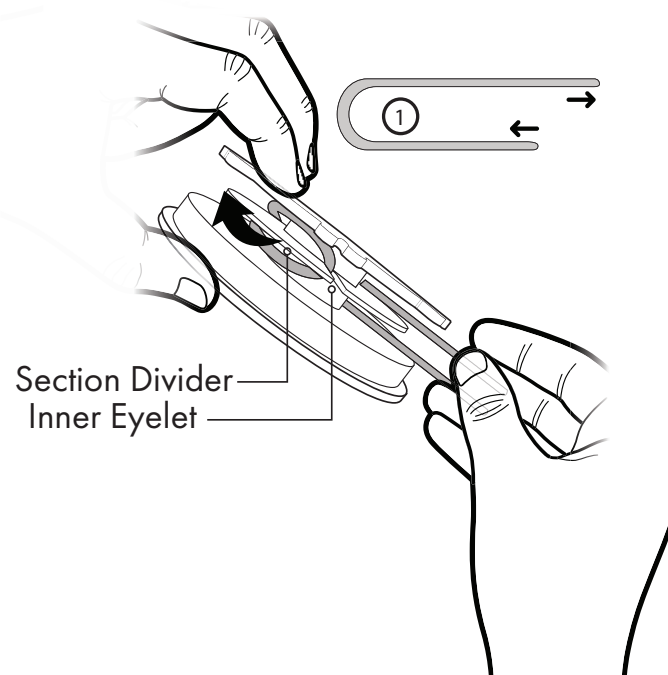
Replacing/Rewinding the Spool

3

To rectify an incorrectly wound line, fold the line in half, making sure one end is slightly longer than the other.

At the fold, hook this onto the inner eyelet.

Ensure that both lines are now separated into each section as you tightly wind it round following the indication marker on the top, which is marked "wind cord".



4

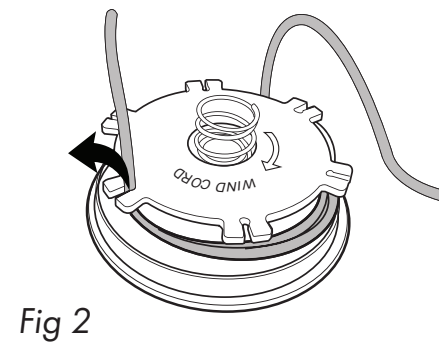


Fig 2

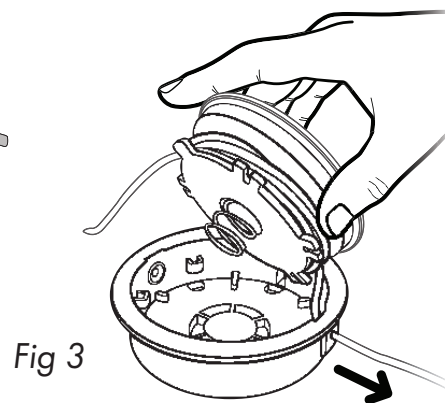


Fig 3

IMPORTANT: If the Spool Line is too long, the Small Blade on the Trimmer Guard will trim it automatically when the tool is on.

Once wound, hook one end into the outer eyelet (**fig 2**) and insert the other end through one of the eyelets on the Spool Assembly (**17**) (**fig 3**). Unhook the end secured in (**fig 2**) and insert through

the other eyelet on the Assembly.

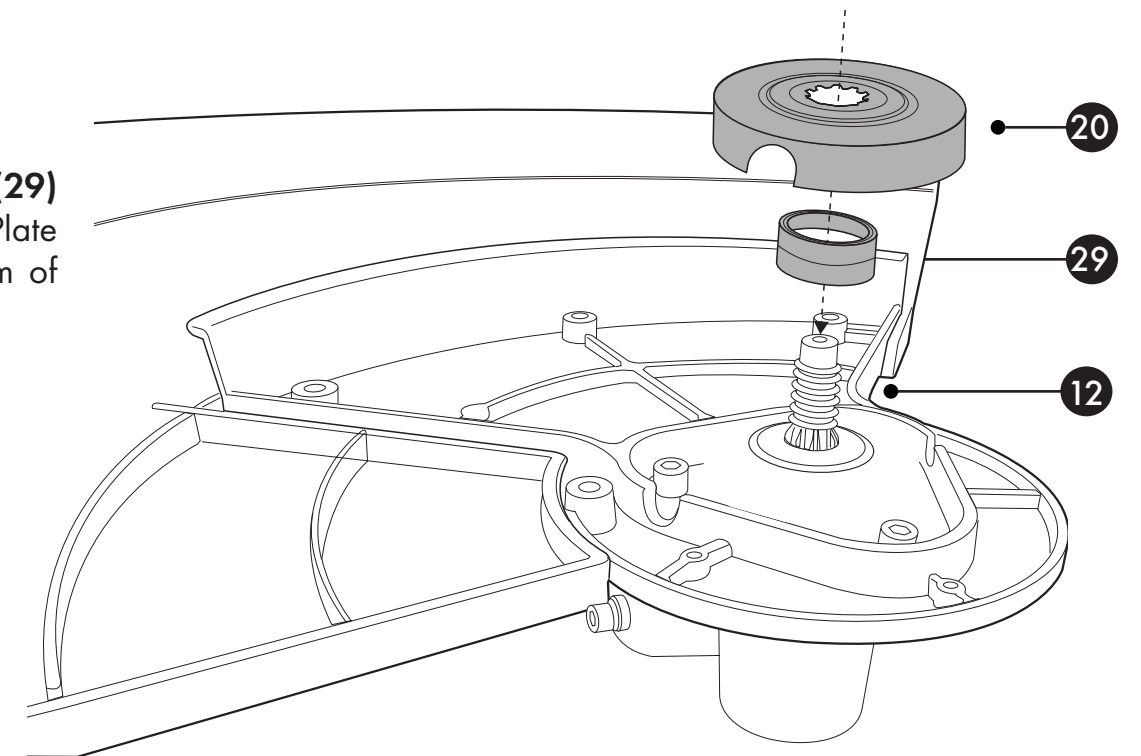
NOTE: Ensure the spring from Step 3 is replaced back underneath the carrier before placing the carrier back into the housing.

Replace the spool cover, firmly pushing down to click back into place.

Brush Cutter Assembly

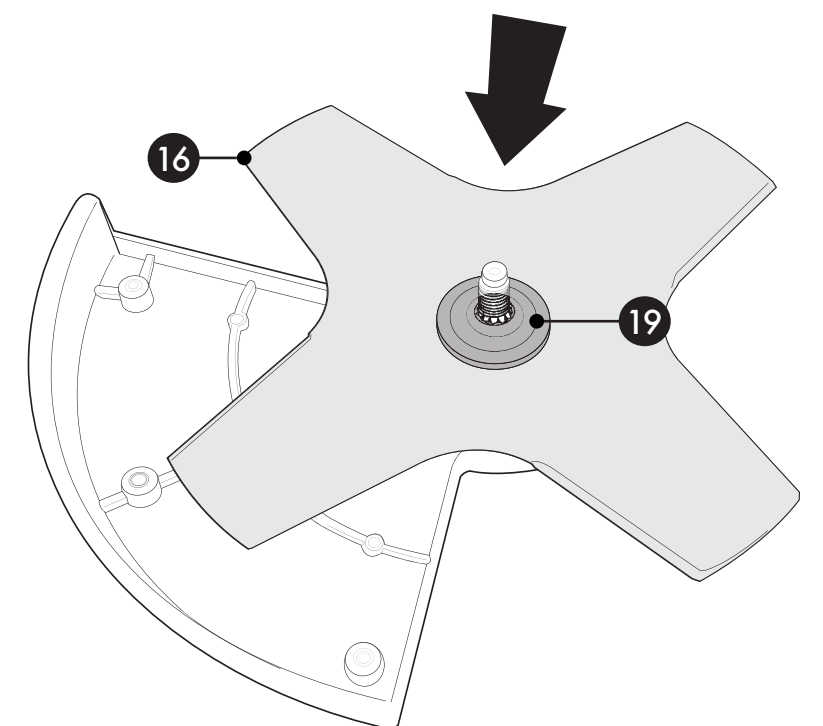
1

Install the Sleeve (**29**) and the Coupling Plate (**20**) on the bottom of the Gearbox (**12**).



2

Insert the Brush Cutter Disc (**16**) with the text facing the gearbox and place the Brush Cutter Locking Plate (**19**) on it.



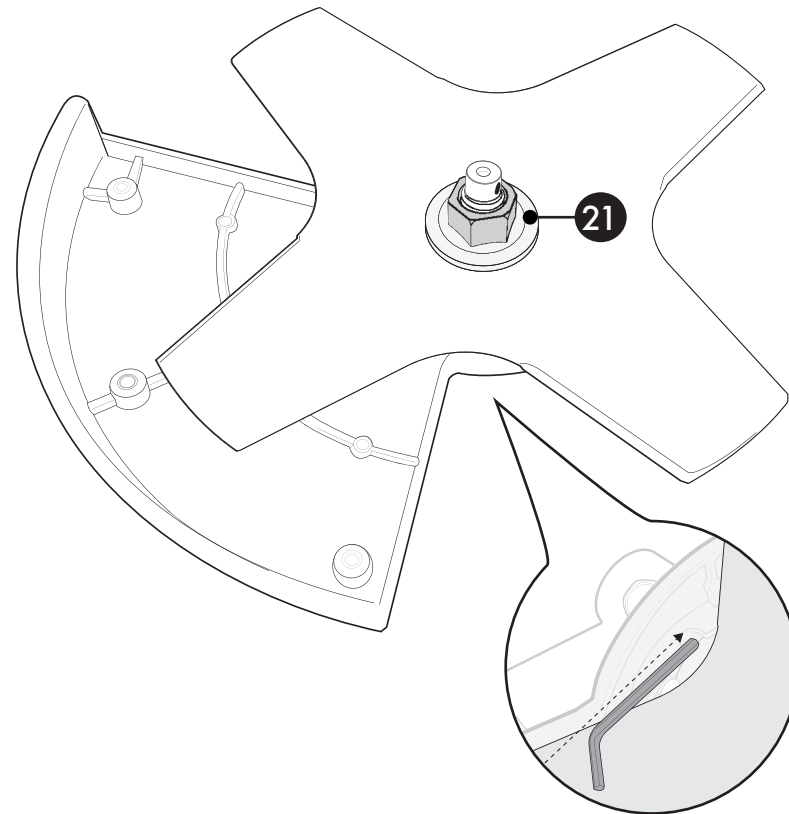
Brush Cutter Assembly

3

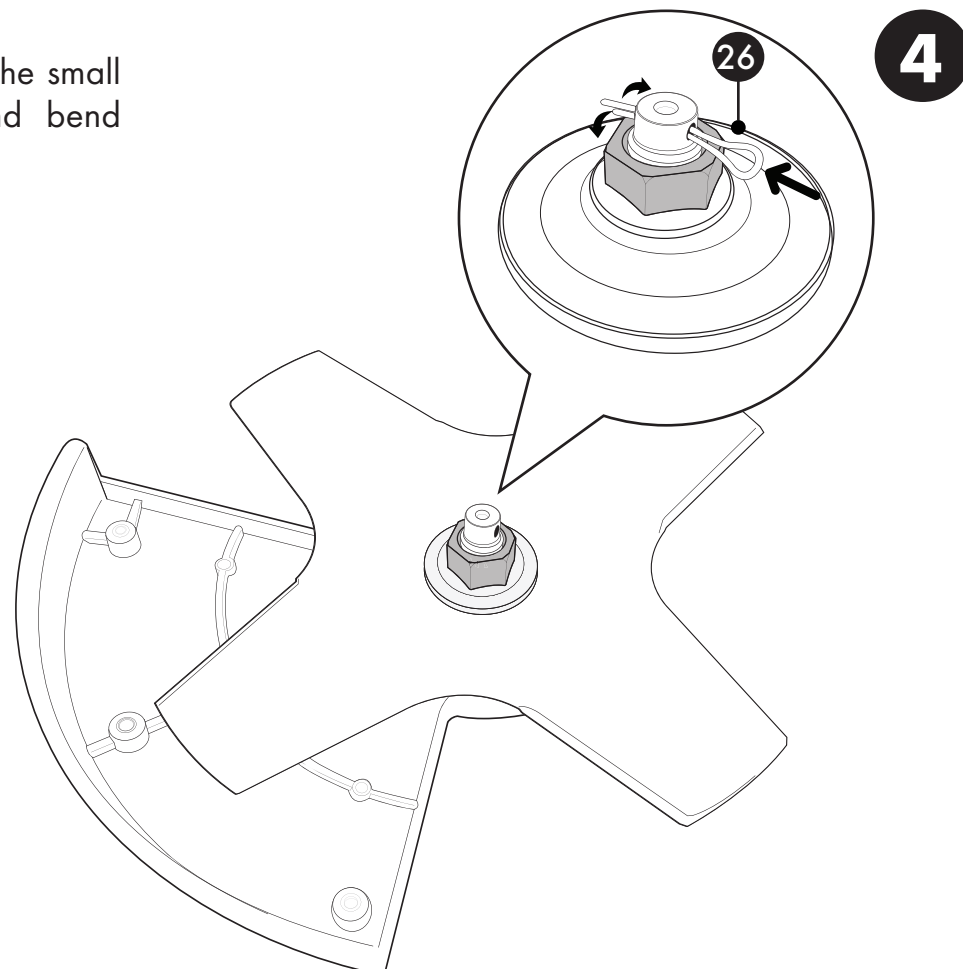
Secure all plates together using the Hex Nut **(21)** supplied.

Tighten using the Maintenance Tool **(28)**.

Ensure the Drive Shaft does not rotate during this step by using the hex key to hold it in place.

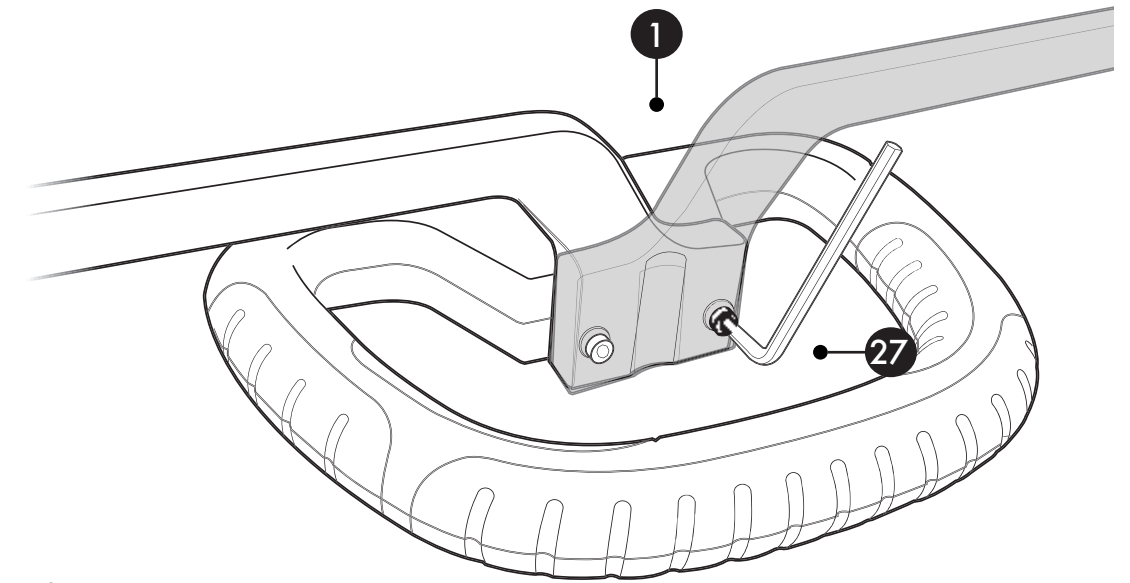


Insert the Split Pin **(26)** into the small hole of the drive shaft and bend around the Nut.



Handle Assembly

1



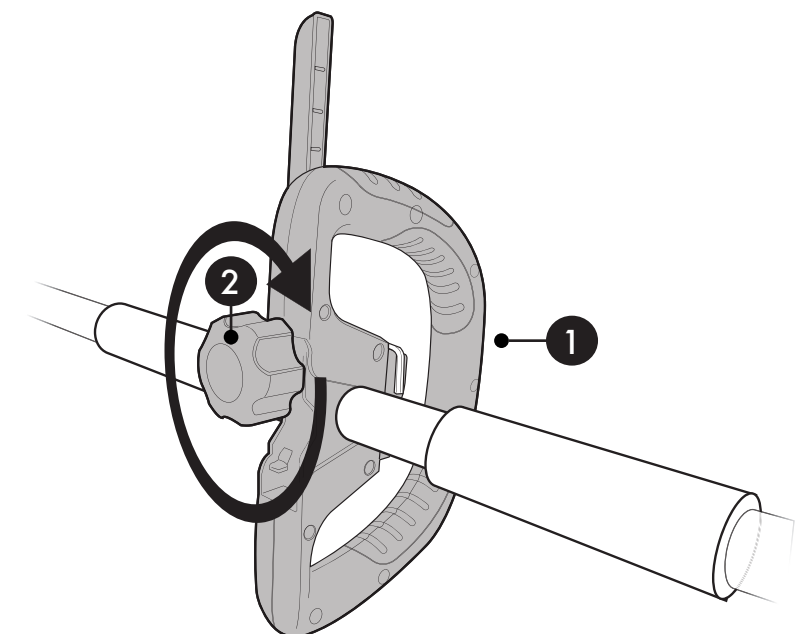
Adjust the Secondary Handle (*highlighted here in grey*) **(1)** to the left or right position using the Hex Key **(27)** supplied.

Position the Handle **(1)** to the Main Unit Pole **(5)** between the 2 foam grips or where the appropriate position is to obtain the best balance.

Using the hinged opening, close and secure the Handle **(1)** using the Handle Locking Screw **(2)** as shown.

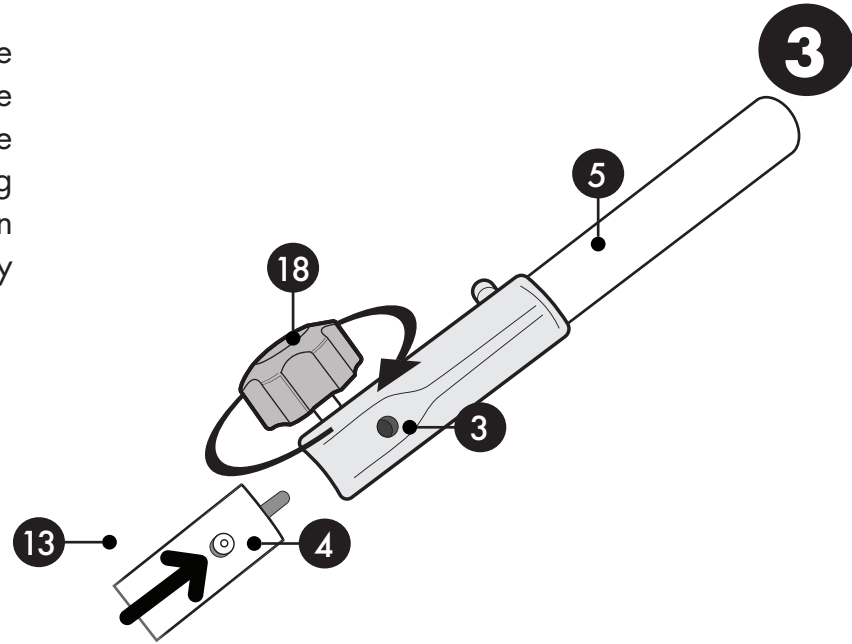
Turn clockwise to tighten.

IMPORTANT! Ensure the Handle **(1)** is completely secure before initial use.

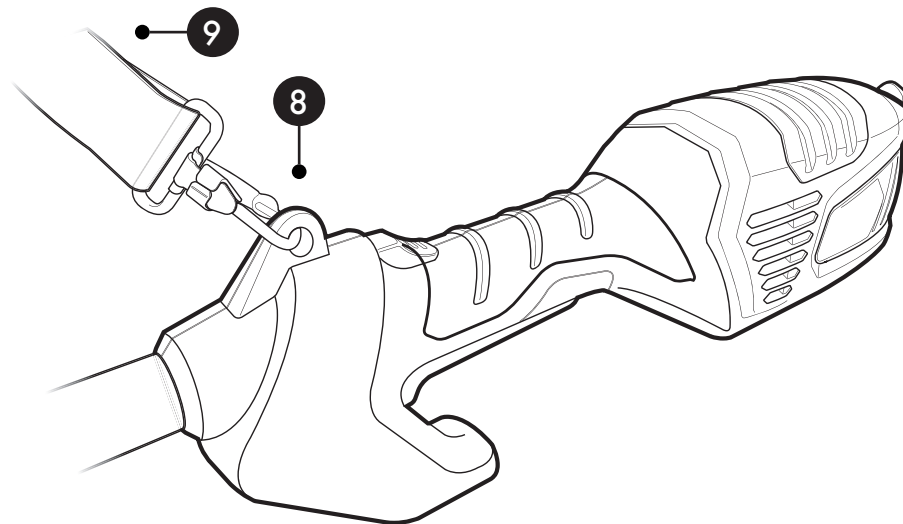


Handle Assembly

To insert the Lower Pole (13) into the Main Unit Pole (5), simply remove the protective cap and unscrew the Locking Nut (18). Push in the Locking button (4) and align with the Button Hole (3). Ensure the button has fully released through hole before use.



4



For added stability and manoeuvrability, we recommend you always attach the Shoulder Strap (9) to the Shoulder Strap Connector (8) located on the top of the Main Unit. While the strap comes pre-attached, always check that the connection is secure.

Adjust the length of the shoulder strap to obtain a comfortable working position. A few practice swings without starting the motor should be made to determine correct balance.

Put the shoulder strap over your right shoulder. Carry the tool motor unit at the right side of your body.

IMPORTANT: Never attach the strap diagonally across your shoulder and your breast, but rather place it on one of your shoulders. In this way you can remove the tool quickly from your body incase of danger.

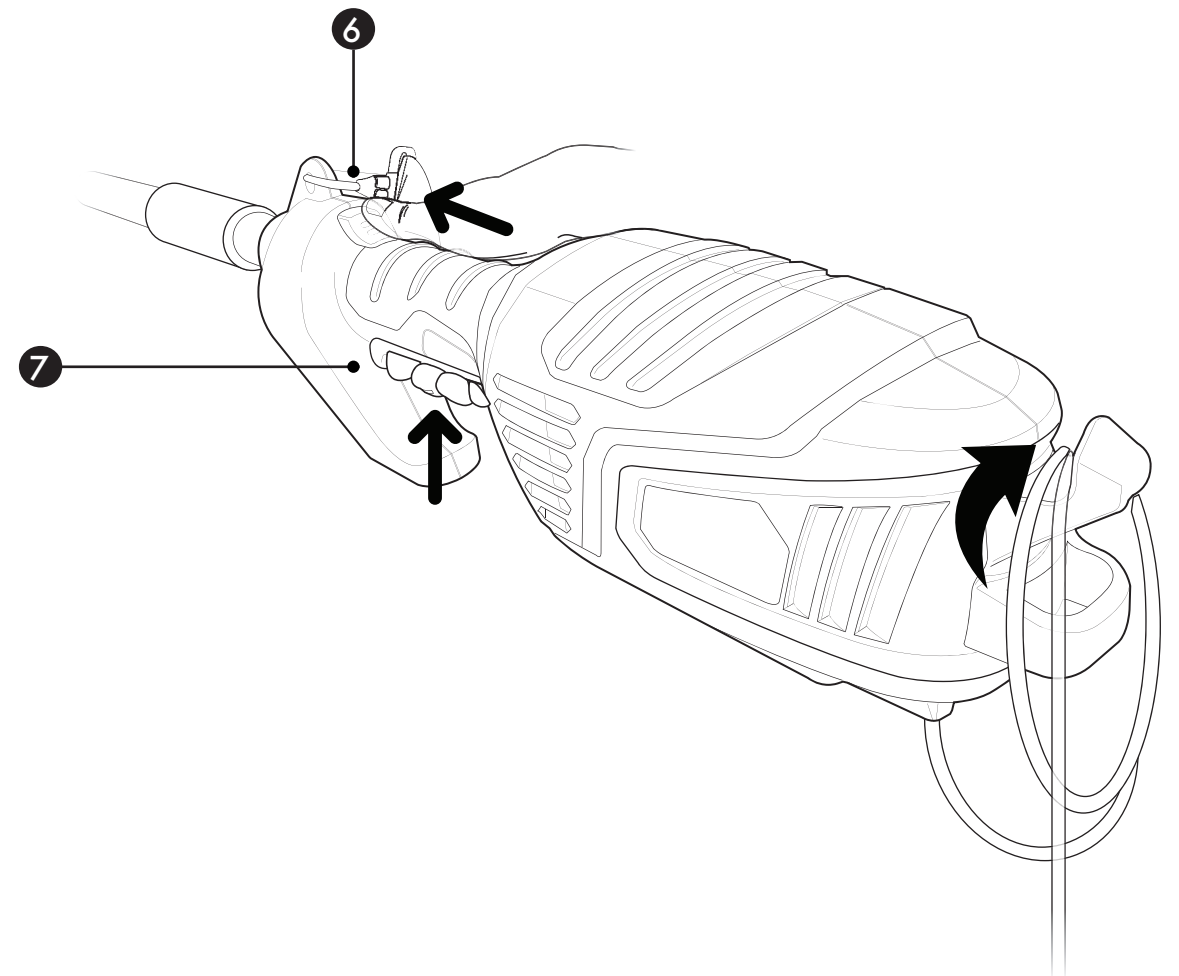
Operation

To operate, press the Safety Switch (6) forwards whilst at the same time pressing the ON/OFF Trigger (7).

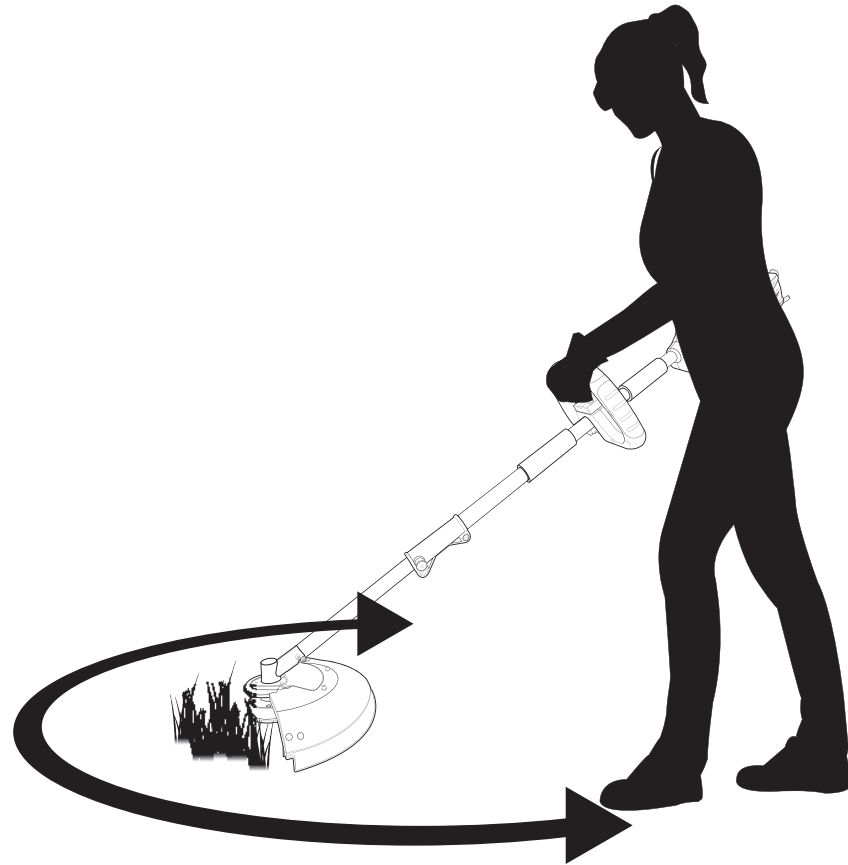
Release the Safety Switch (6) once powered on.

NOTE: When the Brush Cutter starts up there may be some kickback. Always ensure you are stood firmly and have a firm grip

Always ensure that the power cord is correctly wrapped around the Cable Hook (11) before use as illustrated.



Trimmer Operation



WARNING! Ensure the area you are cutting is completely free any stones or debris. These can cause serious damage to the Garden Tool, the user and any passers-by.

When operating the Trimmer, ensure you are holding the rear handle and the other holding the Auxiliary Handle.

CAUTION: Never hold the Trimmer with one hand.

Holding the Auxiliary Handle/Secondary Handle (1), slightly raise the Trimmer out in front of the body at an inclined angle.

If cutting longer areas of grass, ensure you cut down in stages to prevent any grass entangling around the Spool Assembly (17).

CAUTION: Avoid lowering the Trimmer head too much as coming into contact with the ground may loosen the Spool Assembly (17).

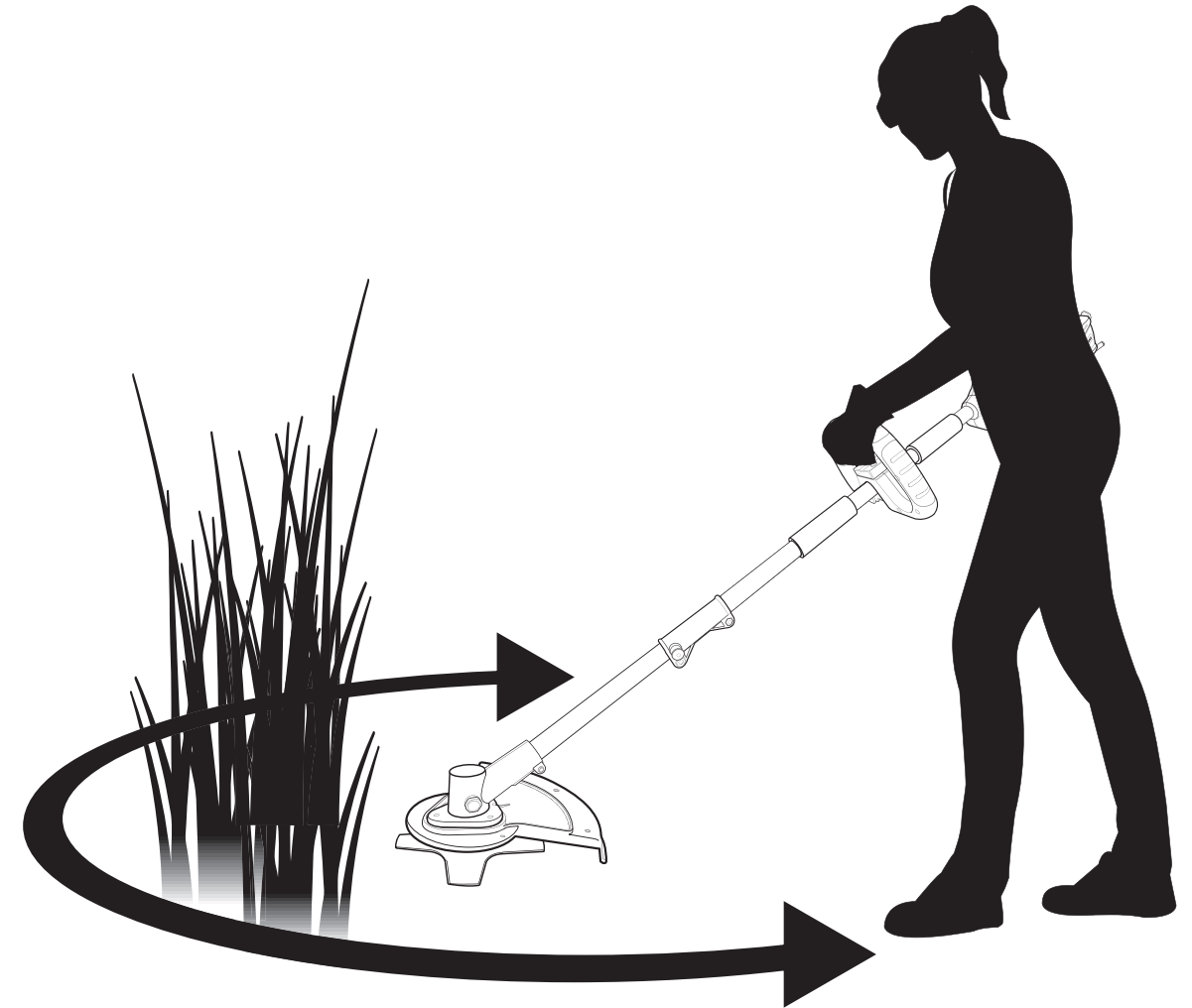
Maintain proper footing and balance and be careful not to overreach.

Always wear safety goggles, non-slip footwear and gloves when using the Trimmer.

IMPORTANT: If poor cutting performance is experienced or the Trimmer appears to be vibrating, be an indication the Spool Assembly (17) needs to be clean, adjusted or replaced.

Note! If you require more line, simply knock the head of the Trimmer on the floor. The Spool Locking Nut (18) doubles as a manual feed mechanism.

Brush Cutter Operation



WARNING! Ensure the area you are cutting is completely free any stones or debris. These can cause serious damage to the Garden Tool, the user and any passers-by.

Just like operating the Trimmer, ensure you are holding the rear handle and the other holding the Auxiliary Handle.

CAUTION: Never hold the Trimmer with one hand. Holding the Auxiliary Handle/Secondary Handle (1), slightly raise the Brush Cutter Disc out in front of the body at an inclined angle. Cut tall section of grass in a broad sweeping motion (right to left).

CAUTION: Do not use the Brush Cutter

near fencing, posts, buildings or other immovable objects.

CAUTION: Avoid lowering the Trimmer head too much as coming into contact with the ground may damage the Brush Cutter Disc (16).

Maintain proper footing and balance and be careful not to overreach. Always wear safety goggles, non-slip footwear and rubber gloves when using the Trimmer.

IMPORTANT: If poor cutting performance is experienced or the Trimmer appears to be vibrating, be an indication that some grass has tangled around the disc or the disc is not installed correctly.

Part Maintenance

Filling With Grease

The Gearbox (12) is filled with multi-purpose grease.

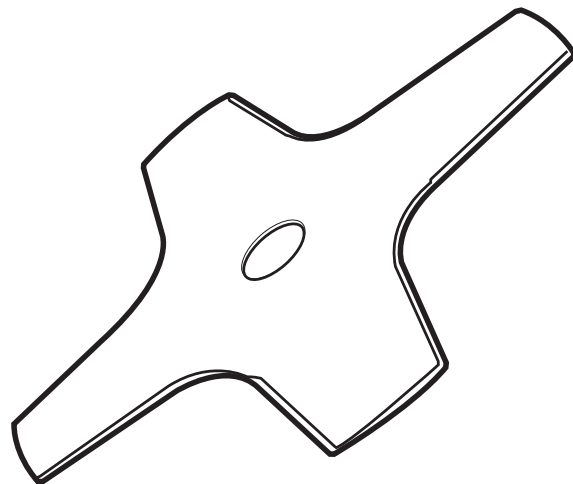
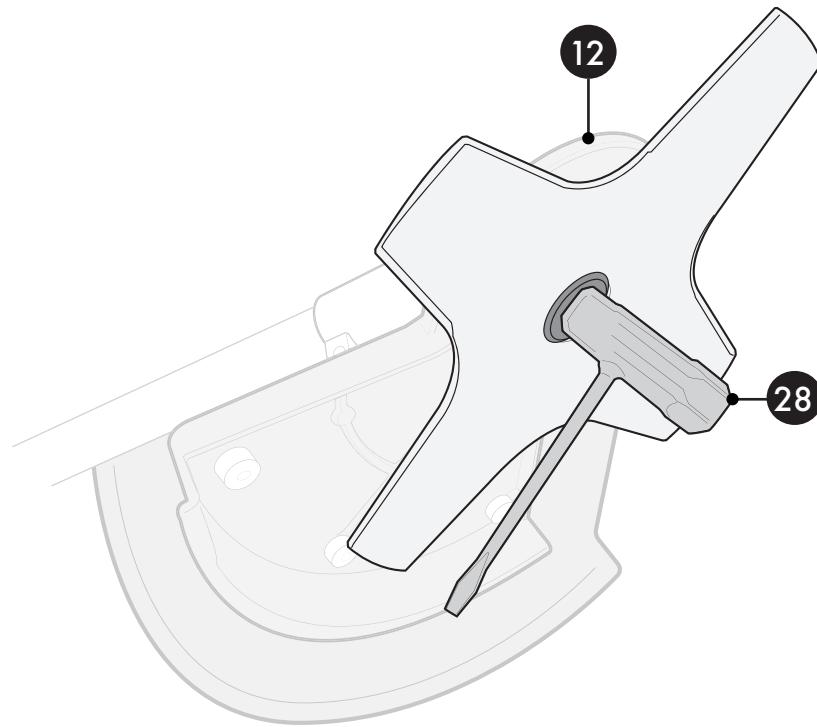
Regularly check the grease level and add more if needed.

Use the Maintenance Tool (28) to fill appropriately as pictured.



WARNING!

Protect your hands



Sharpening the Brush Cutter Disc

Do not attempt to sharpen the disc (16). The brush cutter disc is reversible; turn it over when one side is blunt.

The disc must remain balanced when fitted, as an unbalanced disc will cause excessive vibration.

IMPORTANT: Always check the brush cutter disc (16) for damage before each use. If damaged, replace it immediately with an approved part.

Never use a damaged disc.

Note: Disc bore size is 25.5 mm.

Troubleshooting

Tool Does Not Power On

- Ensure the tool is switched on and connected to the main power.
- Activate the ON/OFF trigger switch.
- Check the fuse and replace if necessary.

Disc Does Not Move

- The driver gear may be broken. Contact DOMU Brands customer services at support@vonhaus.com

Poor Cutting Performance

- The brush cutter disc may be damaged or blunt and will need changing as outlined in the part maintenance section.
- Add more spool line by gently knocking the head of the spool assembly on the ground.
- Remove and replace the spool line.

Motor Becomes Hot

- The tool may have been heavily used. Reduce the force applied to the tool. Do not exert extra pressure; let the tool do the work.
- Air vents may have become blocked. Clean the air vents using compressed air or a clean, dry cloth.

Vibrating Abnormally

- The brush cutter disc may be loose. Tighten the hex nut as described in the manual.
- The disc may not be mounted correctly. Check the disc and replace if necessary.
- Machine bearings may be worn. Contact DOMU Brands customer services at support@vonhaus.com

Spool Assembly Is Difficult to Rotate

- A build-up of grass may have tangled around the spool assembly.
- Disconnect from the mains and remove any blockages.

Spool Line Not Releasing Evenly

- Rewind the spool line.

Usage & Safety



Sharp edges



Protect your ears



Protect your eyes



Protect your hands



Wear suitable footwear



Protective clothing
must be worn



Beware of
kickback



Potential finger
trap points



Maintain a safe distance
from bystanders



Do not use in
wet conditions

Usage & Safety

Intended Use

Only operate the power tool or machine for its intended purpose and within the parameters specified in this manual.

This tool is for domestic use only. It is not intended for use by persons with reduced physical, sensory or mental capabilities, or lack of experience and knowledge, unless supervised or instructed by someone responsible for their safety.

General Precautions

Do not allow the tool to be used as a toy. Supervise children to ensure they do not play with the tool.

If the tool is not functioning properly, has been dropped, damaged, left outdoors, or immersed in liquid, do not use it. Contact DOMU Brands customer services.

Do not use the tool if any parts appear to be faulty, missing or damaged.

Ensure all parts are securely attached before use.

Risk of Personal Injury

Avoid body contact with earthed or grounded surfaces such as pipes, radiators, ranges and refrigerators. There is an increased risk of electric shock if your body is earthed or grounded.

Prevent unintentional starting. Ensure the switch is in the off position before connecting to the power source or battery pack, picking up or carrying the tool.

Do not carry the tool with your finger on the switch or energize power tools that are switched on.

Do not operate power tools in explosive

atmospheres, such as in the presence of flammable liquids, gases or dust. Power tools create sparks that may ignite the dust or fumes. Always wear eye protection. Use safety goggles that comply with ANSI safety standard Z87.1. Everyday glasses only have impact-resistant lenses.

Do not expose power tools to rain or wet conditions. Water entering the tool increases the risk of electric shock.

Stay alert, watch what you are doing and use common sense when operating the tool. Do not use the tool if you are tired or under the influence of drugs, alcohol or medication.

Use personal protective equipment as appropriate, such as dust masks, non-skid safety shoes, hard hats or hearing protection. Remove any adjusting key or spanner before turning the tool on. A spanner or key left attached to a rotating part may result in personal injury.

Do not overreach. Keep proper footing and balance at all times for better control of the tool.

Dress appropriately. Do not wear loose clothing or jewelry. Keep hair, clothing and gloves away from moving parts.

Work Area Safety

Keep the work area clean and well lit. Cluttered or dark areas invite accidents.

Keep children and bystanders away while operating the tool. Distractions can cause loss of control.

Usage & Safety

Power Tool Use and Care

Do not force the tool. Use the correct tool for your application.

Do not use the tool if the switch does not turn it on and off. Any tool that cannot be controlled with the switch is dangerous and must be repaired.

Disconnect the plug or battery pack before making adjustments, changing accessories or storing the tool.

Store idle tools out of reach of children and do not allow persons unfamiliar with the tool to operate it.

Maintain your tools. Check for misalignment or binding of moving parts, breakage of parts and any other condition that may affect operation. If damaged, have the tool repaired by a qualified person.

Keep cutting tools sharp and clean. Properly maintained tools with sharp cutting edges are less likely to bind and are easier to control.

Use the tool and accessories according to the instructions, considering the working conditions and the work to be performed.

Do not use the tool for operations different from those intended.

Cleaning and Maintenance

Never soak or immerse electrical components or parts with a plug attached.

Disconnect the plug or battery pack before making any adjustments or cleaning.

Ensure the motor has fully stopped before cleaning, changing accessories or carrying out any maintenance.

Maintain the tool. Check for misalignment or binding of moving parts, breakage of parts and any other condition that may affect operation. If damaged, have the tool repaired

by a qualified person.

Keep cutting tools sharp and clean.

Regularly check external nuts and fixings to ensure vibration has not loosened them.

Store idle tools in a dry, locked location out of reach of children.

Keep the cord out of walkways.

Remove the plug or battery before adjusting or maintaining the tool.

Always store the tool in a dry place.

If the tool is damaged, it must be replaced by a qualified service technician.

Keep ventilation slots and motor housings free of dirt and dust.

Clean the tool by rubbing with a clean cloth and blowing with low-pressure compressed air.

Lawn Trimmers and Lawn Edge Trimmers

Check for misalignment or binding of moving parts, breakage of parts and other conditions that may affect operation.

Keep cutting tools sharp and clean.

Hold the tool by insulated gripping surfaces when performing operations where contact may occur with hidden wiring.

Keep hands away from the cutting area. Never reach under the workpiece for any reason.

Technical Specifications

Rated Voltage: 230V - 240V
Rated Power: 1000W
Rated Frequency: 50Hz

If you are missing any components, contact customer service at support@vonhaus.com. Do not proceed with assembly if any components are missing.

Legal

Important Safety Notice

This product is not suitable for use by children or by individuals with physical, sensory or mental impairments that may limit their ability to operate the equipment safely, unless they have been given supervision or instruction concerning the safe use of the product by a person responsible for their safety.

Improper use may result in serious injury. Always ensure the operator is capable of understanding and following all safety instructions provided in this manual.

Disposal Information

Please recycle where facilities exist. Check with your local authority for recycling advice.

Customer Service

If you are having difficulty using this product and require support, please contact support@vonhaus.com

Warranty

To register your product and find out if you qualify for a free extended warranty please go to www.vonhaus.com/warranty

Please retain a proof of purchase receipt or statement as proof of the purchase date.

The warranty only applies if the product is used solely in the manner indicated in the warnings page of this manual, and all other instructions have been followed accurately.

Any abuse of the product or the manner in which it is used will invalidate the warranty.

Returns

Returned goods will not be accepted unless re-packaged in its original packaging and accompanied by a relevant and completed returns form. This does not affect your statutory rights.

No rights are given under this warranty to a person acquiring the appliance second-hand or for commercial or communal use.

Copyright

All material in this instruction manual are copyrighted by DOMU Brands.

Any unauthorised use may violate worldwide copyright, trademark, and other laws.

Thank You

Thank you for purchasing your product/appliance.

Should you require assistance with your purchase, please contact us at support@vonhaus.com

VonHaus is a registered trademark of DOMU Brands Ltd.

Made in China for DOMU Brands Ltd.
Unit 30, Stakehill Industrial Estate
Middleton, Manchester, M24 2RW

EU Authorised Representative

Authorised Representative Service
77 Camden Street Lower
Dublin, D02 XE80
Ireland

Let's get started!

Visit our product hub for useful tips and tricks on getting the most out of your new product.

SCAN ME

