

KAVAN Smart PRO GPS2 Logger - Instruction manual

INTRODUCTION

Congratulations on purchasing the **Smart PRO GPS2 Logger**, a telemetry device that offers fast and accurate real-time position detection and feedback. It uses multiple satellite navigation systems to achieve maximum precision and resolution. Logging all the data is possible due to its large integrated Flash memory. The logged data can be downloaded and analyzed on a computer using the free MAV Manager software.

FEATURES

- Small dimensions, high measurement accuracy
- Large industrial memory for data logging
- Latest generation GPS chipset supporting multiple satellite systems
- 3-axis magnetometer/compass for external navigation purposes
- Backup supercapacitor for fast position fix after powering off
- Voltage measurement and logging
- Automatic telemetry detection: FPort, Duplex EX, Hott, MSB, S.Bus2, P²Bus. Automatic timezone detection
- Configuration through the transmitter or MAV Manager
- Firmware updates.

TECHNICAL SPECIFICATIONS

- **Dimensions:** 28×30×9 mm
- **Weight:** 14 g
- **Memory:** 256 MB
- **Supported positioning systems:** GPS, GALILEO, GLONASS
- **Recording time (5 samples/s):** 66 hours
- **Sampling:** 10 Hz, 5 Hz, 2 Hz, 1 Hz
- **Flash endurance:** 100 000 erase cycles
- **Operating current:** 50 mA
- **Operating temperature:** (-20)–85 °C
- **Supply Voltage:** 3.5–8.4 V
- **Telemetry:** FPort, Duplex EX, Multiplex MSB, Graupner Hott, Futaba S.Bus2, PowerBox P²Bus
- **Status LED:** Yes
- **GNSS receiver sensitivity:** -167 dBm
- **GNSS max. acceleration:** 4G

AVAILABLE TELEMETRY

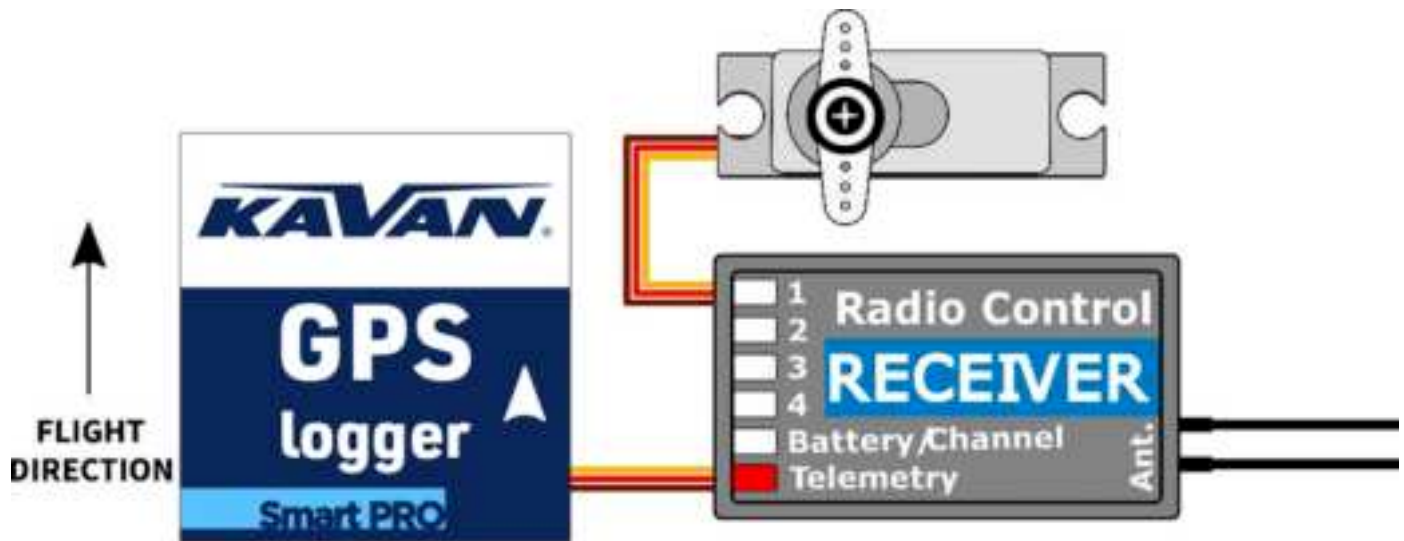
The telemetry options depend on the radio control system. The complete data are automatically logged in the internal Flash memory.

Parameter	Description
Timestamp	Current precise GPS time.
Latitude	Coordinate North/South.
Longitude	Coordinate East/West.
Status	Indication of activity (1 = got fix) or fault condition.
Sattellites	Number of detected satellites.
Abs. altitude	Altitude above the mean sea level.
Distance	Distance from the "Home position".
Speed	2D/3D speed referenced to the ground. The speed type can be set in the configuration.
Rel. altitude	Altitude relative to the "Home position".
Course	Direction of the flight (heading). Values in range 0–359°: 0° = North, 90° = East, 180° = South, 270° = West. A compass heading is used if the speed is zero.
Azimuth	Position of the model respecting the "Home position". Values in range 0–359°: 0° = North, 90° = East, 180° = South, 270° = West.
Temperature	Internal temperature.
Magnetometer X/Y/Z	3-axis magnetometer value. It can be used for further calculations.
Voltage	Receiver voltage (logged only).
Trip	Distance travelled during the flight (logged only).

INSTALLATION

Connect the Smart PRO GPS2 Logger to the receiver telemetry port. Place the device on top of the plane, so the internal patch antenna is not shielded in any direction. Shielding materials, such as metal, carbon or anything conducting, can reduce the position detection performance. Additionally, make sure that the 2.4GHz antennas are located at least 20 cm or more from the GPS Logger. Try to avoid any mechanical stress on the sensor and avoid any close contact with components producing heat (such as motors or speed controllers). Use a soft double-sided adhesive tape, or Velcro as an alternative.

For good performance of the integrated magnetometer, it is necessary to install the device at least 20 cm away from magnetized objects and cables powering servos/motors. In addition, please keep the device orientation respecting the flight direction as shown in the picture below (note the arrow on the device).



Power up the receiver with the GPS Logger attached. The red LED flashes once to indicate correct initialization. After a few seconds (or minutes if the device has been unpowered for a day or more), the device reports a "3D position fix". From this moment on, the device can start logging depending on the condition set in the configuration. The logging is indicated by a flashing LED synchronously with the sampling rate.

Each time the logging is started, a new file is created at the internal Flash storage. The log files are named according to current date and time in the following format:

"GYYYYMMDD HHhNN.log" (where YYYY = year, MM = month, DD = day, HH = hour and NN = minute). **Example:** G20210605 20h47.log

It is not necessary to delete old log files manually. When there isn't enough free space, the oldest log files are deleted automatically. The internal file system is robust and immune against power failures so the battery may be disconnected anytime.

TELEMETRY AND SETTINGS

The device is compatible with JETIBOX and HOTT SMART-BOX for programming. The JETIBOX menu is divided into three sections:

- **Actual values** - Displays the latest telemetry values (altitude, distance, position, temperature) including minimums and maximums.
 - **Reset Min/Max** - Press LEFT+RIGHT buttons together to reset all minimums and maximums.
- **Settings** - Basic settings of the sensor.
 - **Language** - You can choose the language of the JETIBOX screen.

- **Timezone** - Press Left+Right to switch between automatic timezone detection and manual configuration. If the "Auto" mode is used, the detected timezone is displayed when the sensor has a position fix. If the timezone is detected incorrectly, switch to "Manual" mode and type the zone using LEFT or RIGHT keys. For example, Central Europe uses GMT+1, while US Eastern Time uses GMT-5.
- **Apply DST** - Set "Yes" if you want to use Daylight Saving Time (or Summer Time) – this function will add or subtract one hour depending on your current location.
- **Speed measure** - Set the "2D" option if you need to use only ground speed measurements (walking, boat, and car). In the case of a flying model, use "3D" measurement type to include vertical components. This parameter influences the speed, distance and trip (route) measurements.
- **GPS profile** - Set the GPS profile according to supposed usage. This parameter influences the accuracy and speed/latency of position detection.
 - **Air 1G** - flying objects that do not change direction very fast (large scale models, gliders, cinematic drones...).
 - **Air 2G** - faster-flying objects that perform basic manoeuvres (trainers, EPP...).
 - **Air 4G** - fast-flying objects that are capable of aerobatics (3D aerobatic models, F3A, jets). Default option.
 - **Walk/2D** - slow motion on the ground.
 - **Car/2D** - a mode suitable for a car.
- **Log period** - Set the logging period according to your preferences. The maximum value (10 Hz) stores data 10 times per second and can cover all flight details. Please note that with a higher logging rate also the size of log files grows faster.
- **Logging** - Set the condition that must be fulfilled to start logging:
 - **Auto/Fix** - the logging starts automatically when the position is determined (the logger gets a 3D fix).
 - **Auto/10kmh** - the logging starts automatically when the logger gets 3D fix and the speed exceeds 10 km/h.
 - **Start/Stop** - the logging starts after the 3D fix and speed exceeds 10 km/h. It stops after 10 s below 5 km/h.
- **Home location** - If "Automatic" mode is used, the home location is determined after each startup – the position where the GPS Logger got its first position fix. The following telemetry is calculated respecting the home location: Relative altitude, distance and azimuth. In "Manual" mode the last known home location is used.
- **Set home location** - By pressing the Left+Right arrows you can set the current GPS coordinates as a reference point. The home location is updated if you press Left+Right arrows on the JETIBOX main telemetry screen, independently on the Auto/Manual settings.
- **Minimum satellites** - Set the minimum number of detected satellites before confirming the 3D position fix.*
- **Startup HDOP** - Set the initial required "horizontal delusion of precision" before confirming the 3D position fix. The HDOP parameter says how much we can trust the position measurement, where a lower value is better. For example, value 2.0 states that the typical deviation of current measurement from an ideal position is up to 2 meters.
- **Service** - In this menu, you can view the device version, and reset it to the default factory configuration.
 - **Memory/Free** - Shows the available space at the internal Flash memory.
 - **Format** - In case of a file system error, you may format the Flash memory. Please note that this procedure erases all the data – even configuration.
 - **Clear logs** - Deletes all log files.
 - **Compass, Compass (Home)** - Displays current magnetometer measurement compared to an ideal measurement, calculated based on the GPS location.

GRAUPNER HOTT MENU STRUCTURE

The GPS Logger offers telemetry as a standard GPS telemetry module.

```

GPS LOGGER VX.XX
REL. ALTIT      81m
DISTANCE        150m
SPEED           72km/h
TRIP            1500m
LAT.    12°34.5678N
LON.    12°34.5678E
DD/MM/YYYY HH:MM:SS

```

```

GPS LOGGER VX.XX
MAX.ALTIT      180m
MAX.DISTANCE    250m
MAX.SPEED      150km/h
HDOP/VDOP      1.1/1.5
9xSAT  25.5°C  5.0V
>RESET MIN/MAX
                2/5

```

```

GPS LOGGER VX.XX
>LANGUAGE      English
TIMEZONE       Auto
               Europe/Prague
APPLY DST      Yes
SPEED MEASURE   3D
PROFILE        Air 1G
                3/5

```

```

GPS LOGGER VX.XX
>RECORD PERIOD 10Hz
LOGGING Auto/3DFix
HOME LOCATION  Auto
  Set Home Now
MINIMUM SATS    5
STARTUP HDOP    2.0
                4/5

```

```

GPS LOGGER VX.XX
>FACTORY DEFAULTS
CLEAR LOGS
FORMAT
MEMORY      256.0MB
FREE        189.5MB
                5/5

```

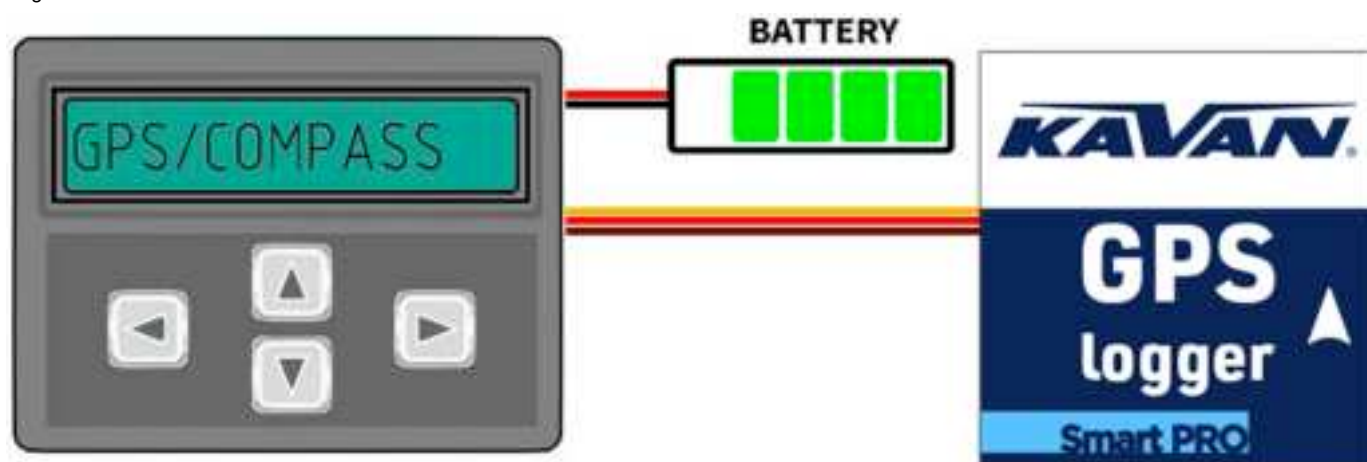
FUTABA AND MULTIPLEX CONNECTION

Futaba and Multiplex systems do not offer wireless device configuration. The telemetry transmission is possible with the following fixed sensor slots:

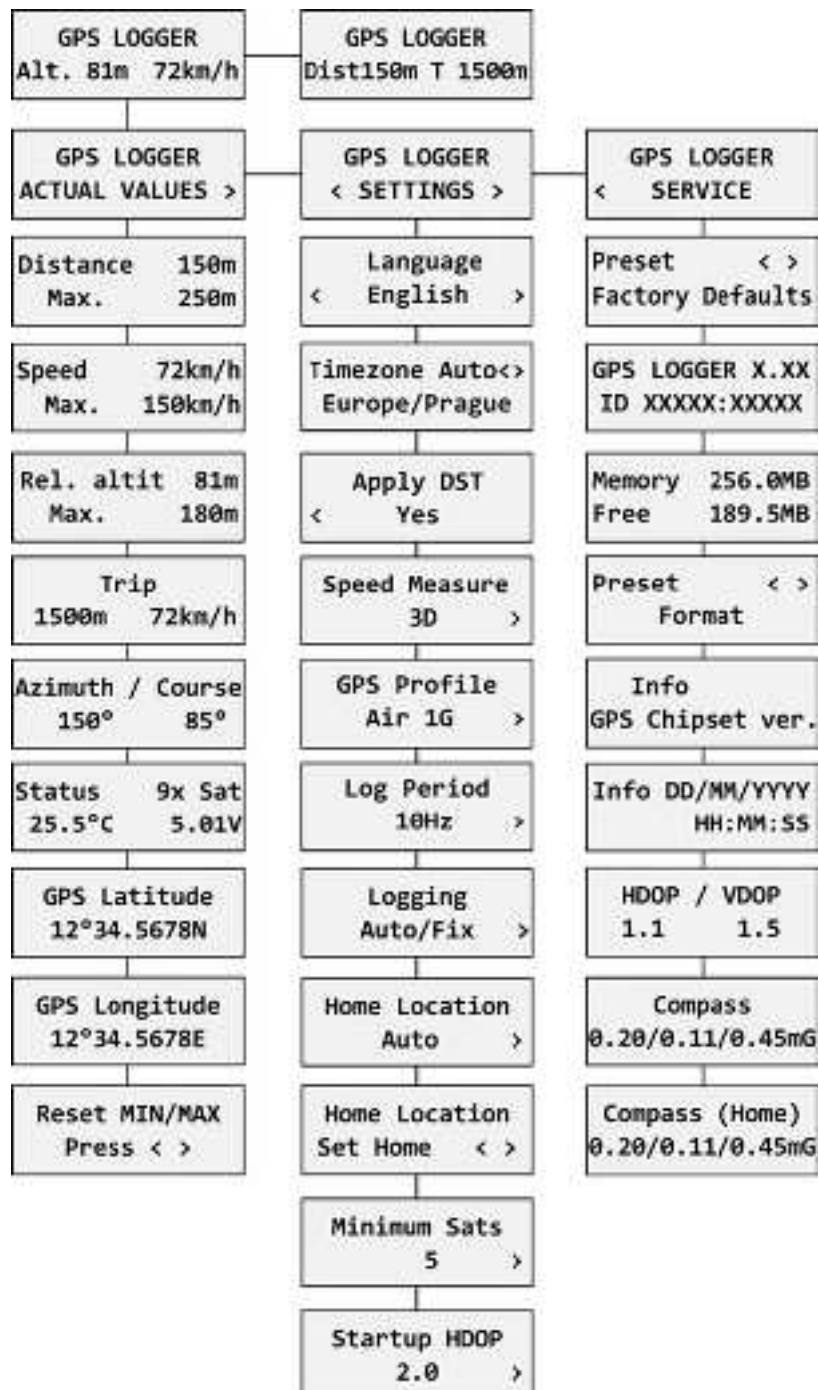
	Futaba S.Bus2	Multiplex MSB
Speed	8	9
Altitude	9	10
Time	10	-
Vario	11	-
Latitude	12–13	-
Longitude	14–15	-
Distance	-	11
Satellites	-	12
Course	-	13
Note	Manual detection in the menu Linkage – Sensor. Choose F1675 GPS on slot 8.	Automatically detected by the transmitter.

JETIBOX CONNECTION

Plug the GPS Logger into the sensor slot of the JETIBOX. Power it up with a battery of appropriate voltage (4.5–8.4 V). Now you can configure the sensor using the arrows on the JETIBOX.



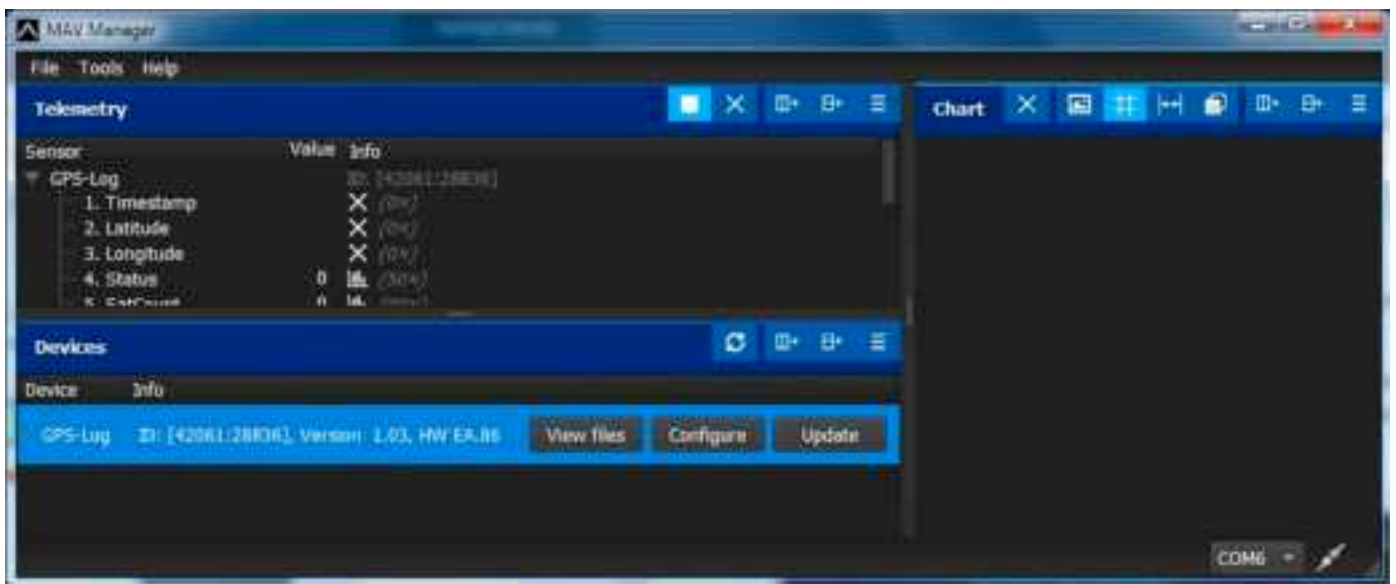
COMPLETE JETIBOX MENU STRUCTURE



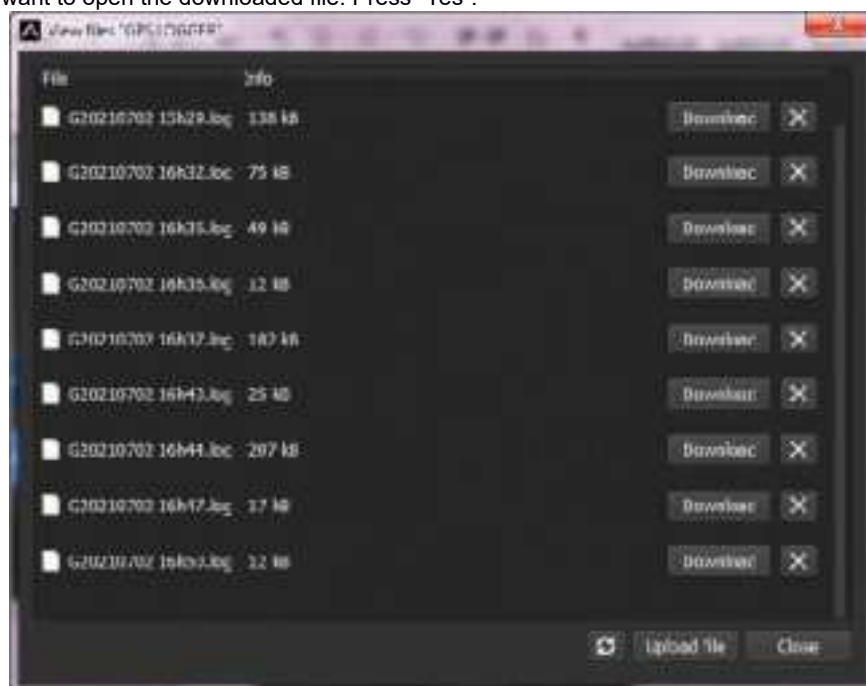
ANALYZE LOG FILES

The free MAV Manager software allows you to download and analyze the GPS data after the flight. You can download it from the manufacturer's website.

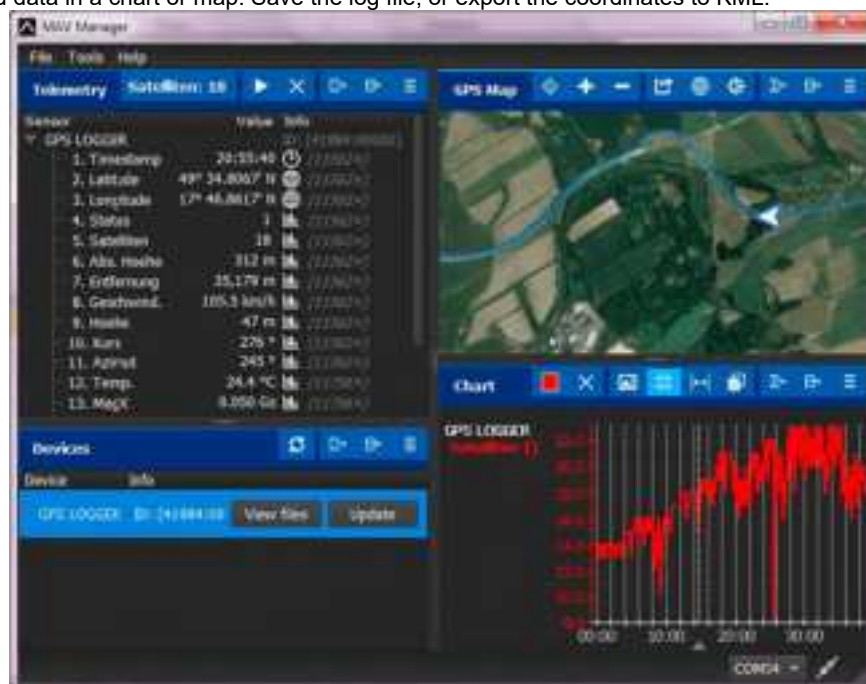
1. Connect the MAV USB interface to the computer. Attach the GPS Logger to it.
2. Launch the MAV Manager and select the correct serial port at the bottom of the screen (COMxx). The GPS LOGGER will be recognized automatically.
3. Press "View files" in the list of devices.



4. Select the log file and press the “Download” button. You will be asked to select the destination filename. When the transfer finishes, you will be asked if you want to open the downloaded file. Press “Yes”.



5. You can view the logged data in a chart or map. Save the log file, or export the coordinates to KML.



SAFETY INFORMATION

- Operate the GPS Logger always in a dry environment and within the device limits stated in this guide. Never expose the device to excessive heat or cold.
- Never apply mechanical stress or excessive force to the GPS Logger. The sensing element can measure imprecisely or be damaged if a force is applied.
- Do not remove the heat shrink tube from the device and do not try to implement any changes or modifications. This can lead to the destruction and denial of any warranty claims.
- Always check the polarity of the connection. Never inverse the polarity – this could lead to destruction.

FIRMWARE UPDATE

Firmware updates for the GPS Logger are transferred from a PC via the USB interface. The required programs and files are available at www.mavsense.com. Install the MAV Manager software and the USB drivers on your computer. Check the system requirements.

1. Connect the USB interface to your PC, run MAV Manager - Updater and select the correct COM Port.
2. Connect the GPS Logger according to the picture below.
3. Select the correct *.BIN file and press the Update button.



Note: The GPS Logger will be automatically detected by the MAV Manager.

PC CONFIGURATION

It is possible to use the MAV Manager software (1.6.0 and later) to conveniently configure all device settings, display real-time telemetry and make a configuration backup. The configuration menu contains four buttons in the top toolbar:

- **Refresh** - forces the configuration to be reloaded from the device.
- **Import** - imports the settings from a file. If you have several devices and want all of them with identical settings, import the same settings to each device.
- **Export** - exports the settings from the device to a file. You can easily create a backup configuration stored on your PC. After making the backup, you may easily experiment with the settings and later revert to the original configuration by pressing the "Import" button and choosing the original exported file.
- **Reset default** - resets the device to factory defaults and reloads all the settings.



Connect the GPS Logger to your PC using the USB interface. The device will be automatically detected by the MAV Manager. The device properties are available after pressing the "Configure" button.

QGIS Desktop Settings GPS Logger Settings

GPS Logger Settings

Time & Date settings

Timezone: Automatic +

Timezone offset: +00:00 +

Repeat Interval: No +

Log on Startup: ☒ +

Measurement settings

Speed Measurement: On +

GPS mode: 2D-3D +

Logging Interval: 5m +

Logging: Automatic (30m) +

Track creation: Automatic +

Startup conditions

Automatic & Geotagged: ☒ +

Display ID311: ☒ +

Formatting options

Display coordinates (WGS): N + 15 +

GPS-Log v0.0.1

REFRESH EXPORT ENCRYPT RESET DEFAULT

GPS-Log v0.0.1

Telemetry systems

Future telemetry data	2 - 15	+
PowerBn ID	62	+
Multiple HSB altitude dat	10	+
Multiple HSB speed stat	6	+
Multiple HSB distance dat	11	+
Multiple HSB altitude dat	12	+
Multiple HSB course dat	13	+
Multiple HSB temperature dat	07	+

Internal Flash

Free Memory	255.3MB
Available Memory	254.0MB

CLEAN LOGS

FORMAT FLASH

Real-time telemetry with min/max values. The MAV Manager can also create a log file from the real-time telemetry data, which can be viewed, analyzed, imported and exported.

GPS Logger settings. Every time you make any change in the configuration, the new value is immediately transferred to the device and saved to memory. There is no need for additional confirmation.

You can modify the telemetry settings or clear log files from the internal Flash.

MANUFACTURER

KAVAN Smart PRO GPS2 Logger is made in Czechia by **MAV Sense s.r.o.**

E-mail: info@mavsense.com | Web: www.mavsense.com (<https://www.mavsense.com/>)

RECYCLING AND WASTE DISPOSAL NOTE (EUROPEAN UNION)

Electrical equipment marked with the crossed-out waste bin symbol must not be discarded in the domestic waste; it should be disposed of via the appropriate specialised disposal system. In the countries of the EU (European Union) electrical devices must not be discarded via the normal domestic waste system (WEEE - Waste of Electrical and Electronic Equipment, Directive 2012/19/EU). You can take your unwanted equipment to your nearest public collection point or recycling centre, where it will be disposed of in the proper manner at no charge to you. By disposing of your old equipment in a responsible manner you make an important contribution to the safeguarding of the environment.



EU DECLARATION OF CONFORMITY (EUROPEAN UNION)

Hereby, **KAVAN Europe s.r.o.** declares that the **KAVAN Smart PRO GPS2 Logger** is in compliance with the essential requirements as laid down in the EU directive(s) concerning electromagnetic compatibility. The full text of the EU Declaration of Conformity is available at www.kavanrc.com/doc (<http://www.kavanrc.com/doc>).



GUARANTEE

The KAVAN Europe s.r.o. products are covered by a guarantee that fulfils the currently valid legal requirements in your country. If you wish to make a claim under guarantee, please contact the retailer from whom you first purchased the equipment. The guarantee does not cover faults which were caused in the following ways: crashes, improper use, incorrect connection, reversed polarity, maintenance work carried out late, incorrectly or not at all, or by unauthorised personnel, use of other than genuine KAVAN Europe s.r.o. accessories, modifications or repairs which were not carried out by KAVAN Europe s.r.o. or an authorised KAVAN Europe s.r.o., accidental or deliberate damage, defects caused by normal wear and tear, operation outside the Specification, or in conjunction with equipment made by other manufacturers. Please be sure to read the appropriate information sheets in the product documentation.

Abgerufen von „https://wiki.kavanrc.com/w/index.php?title=KAVAN_Smart_PRO_GPS2_Logger_-_Instruction_manual&oldid=22883“

■