

Description

Mircom's FA-1000 Series Microprocessor Based Fire Alarm Control Panels are Multi-Zone units designed for maximum flexibility and easy installation and operation. Fully configurable from the front panel using push buttons and DIP switches, the FA-1000 Series enables the user to configure the system to meet their specific requirements. With a large capacity of supervised Class A (Style D) or Class B (Style B) Initiating Circuits and supervised Class A (Style Z) or Class B (Style Y) Indicating Circuits, the FA-1000 Series is designed to meet virtually all applications.

The FA-1000 Series consists of a Main Fire Alarm Chassis which houses and controls all other modules. Additional modules may be installed to configure the system to meet any requirements that the user may have. The FA-1000 Series allows for additional Indicating Circuit, Initiating Circuit and Relay modules to be added to the system. In addition it allows for optional modules such as the UDACT-300A Digital Communicator and the PR-300 Polarity Reversal/City Tie Module.

Equipped with Configuration DIP Switches on the Main Display Module the FA-1000 Series Fire Alarm Control Panels are configured through a combination of DIP switch and button settings. Through this configuration method the user can define the system as a Single Stage or Two Stage operation as well as perform various functions such as a One Man Walk Test.

Features

- Listed to UL 864, 9th edition
- Large system capacity
- Modular design
- Each Indicating Circuit can be configured as Silenceable or Non-Silenceable
- Audibles may be configured as Steady, Temporal Code, California Code or March Time
- Each Initiating Circuit can be configured as Alarm, Supervisory, Waterflow or Trouble
- Two LEDs per Initiating circuit; one for Trouble and one for Status
- Initiating and Indicating Circuits may be individually disconnected by a DIP switch
- Configurable Signal Silence Inhibit, Auto Signal Silence, Two-Stage Operation and One Man Walk Test
- Subsequent Alarm, Supervisory and Trouble operation
- Two outputs for 4 wire resettable smoke power supply (200 mA Max. each)
- Auxiliary relay contacts for Common Alarm and Common Supervisory as well as a Common Trouble Relay (Each relay contact Form C, 28 VDC @ 1 Amp (resistive))
- RS-485 Interface for RA-1000 Remote Multiplex Annunciators
- Interface for Remote Trouble Indicator
- Easy configuration via push buttons and DIP switches on the front panel
- Fully site or field programmable Indicating Circuits and Auxiliary Relays
- Extensive Transient Protection
- Slide-in labels for zone identification
- 6 Amp or 12 Amp power supplies available
- Removable door for easy installation and servicing
- Removable terminal blocks for easy wiring and servicing

Optional Modules

- UDACT-300A Digital Communicator Module
- Polarity Reversal and City Tie Module

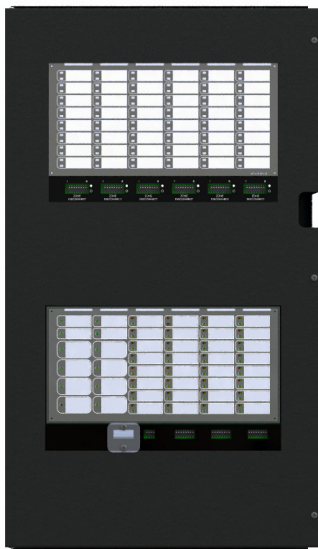


System Components



MCC-1024-6ADS/MCC-1024-12ADS

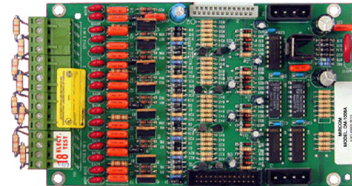
The MCC-1024-6ADS Main Control Unit comes complete with 8 Class B (Style B) or 4 Class A (Style D) Initiating Circuits, 4 Class A/B (Style Z/Y) Indicating circuits, a common control and zone identification display board for up to 24 points and a 6 Amp Power Supply which charges 10-24 AH batteries. The MCC-1024-12ADS is equipped with a 12 Amp Power Supply which charges 17-40 AH batteries. Both models are expandable with up to two adder modules of any type plus one of a UDACT-300A Digital Communicator or PR-300 Polarity Reversal/City Tie Module. Both models mount in a UB-1024DS(R) backbox.



MCC-1024-12XTDS

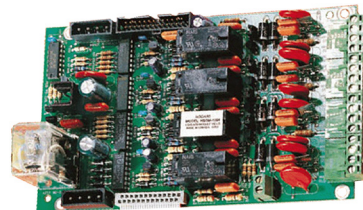
The MCC-1024-12XTDS Main Control Unit comes complete with 8 Class B (Style B) or 4 Class A (Style D) Initiating Circuits, 4 Class A/B (Style Z/Y) Indicating circuits, a common control and zone identification display board for up to 72 points and a 12 Amp Power Supply which charges 17-40 AH batteries. It is expandable with up to eight adder modules of any type plus one of a UDACT-300A Digital Communicator or PR-300 Polarity Reversal/City Tie Module. The MCC-1024-12XTDS mounts in a BBX-1024XT(R) enclosure.

Adder Hardware Modules



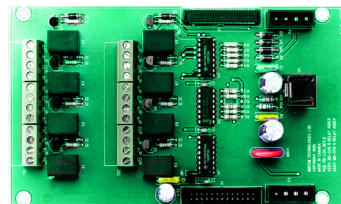
DM-1008A Eight Initiating Circuit Module

The DM-1008A provides 8 Style B (Class B) or 4 Style D (Class A) Initiating Circuits configurable for Alarm, Supervisory or Trouble zones. The DM-1008A occupies one module slot.



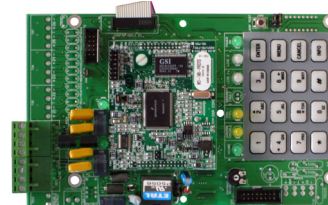
SGM-1004A Four Notification Appliance Circuit Module

The SGM-1004A provides 4 Style Z/Y (Class A/B) Notification Appliance Circuits configurable as Silenceable or Non-Silenceable. Each NAC circuit is rated at 1.7 Amps. The SGM-1004A occupies one module slot.



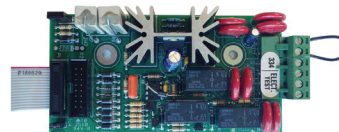
RM-1008A Eight Relay Circuit Module

The RM-1008A provides the FX-2003-12NXTDS with eight individual configurable relays per module. Each relay provides one Form C contact rated at 28 VDC @1 Amp (resistive load) as well as a Green LED to indicate that the relay is active. The RM-1008A occupies one module slot.



UDACT-300A Digital Alarm Communicator Module

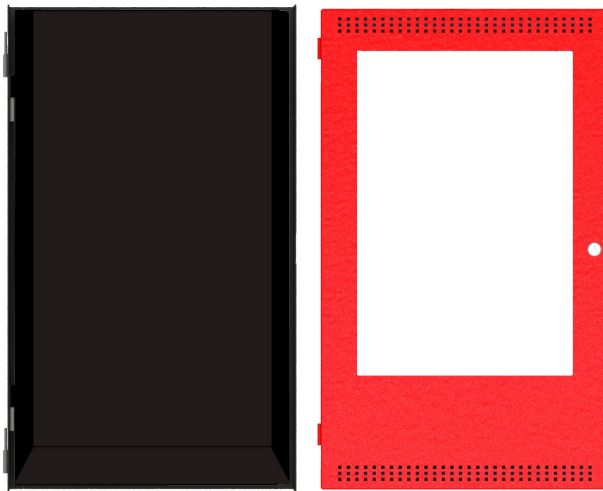
The UDACT-300A Digital Alarm Communicator Module allows the FX-2003-12NXTDS to transmit addressable point information to a central station. The UDACT-300A occupies one module slot.



PR-300 Polarity Reversal/City Tie Module

The PR-300 Polarity Reversal/City Tie Module provides the system with a supervised City Tie and Polarity Reversal connection. The PR-300 occupies one module slot.

FA-1000 Series Enclosures



UB-1024DS

DOX-1024DSR

UB-1024DS Universal Backbox

The UB-1024DS Universal backbox houses the MCC-1024-6ADS/12ADS and provides space to mount up to 17 AH batteries. A DOX-1024DS(R) door is ordered separately. **Dimensions** (minus built-in trim ring): 26"H x 14.5"W x 4.2"D

DOX-1024DS(R) Door

The DOX-1024DS mounts on the UB-1024DS backbox. The door features the universal CAT-30 lock and is available in a white (DOX-1024DS) or red exterior (DOX-1024DSR).



BBX-1024XT

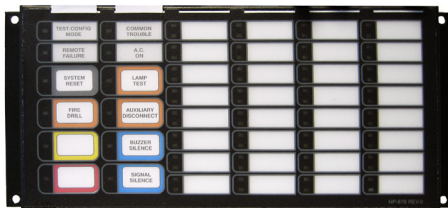
BBX-1024XTR

BBX-1024XT(R) Enclosure

The BBX-1024XT enclosure supports one MCC-1024-12XTDS and up to 18 AH Batteries. The enclosure features the universal CAT-30 lock and a removable door for easy installation and servicing. The enclosure is available in a white (BBX-1024XT) or red exterior (BBX-1024XTR). The FA-XT-TRB Semi-Flush Trim Ring is required for semi-flush mounting.

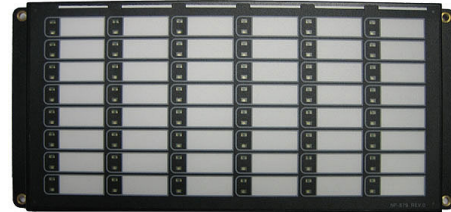
BBX-1024XT(R) Dimensions: 35 1/2"H x 14 1/2"W x 5 1/4"D

RA-1000 Series Remote Multiplex Annunciators



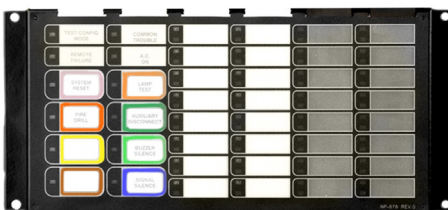
RAM-1032TZDS Main Remote LED Annunciator

The RAM-1032TZDS Main Remote LED Annunciator provides common annunciator functions and 32 points of LED annunciation. The RAM-1032TZDS has indicators for A.C. On, Common Trouble and Signal Silence and controls for System Reset, Lamp Test, Fire Drill, Buzzer Silence and Signal Silence. The RAM-1032TZDS occupies one display position in the BB-1000 or BB-5000 enclosures.



RAX-1048TZDS Programmable LED Annunciator Module

The RAX-1048TZDS Programmable LED Annunciator Module provides 48 programmable bi-colored LEDs. The RAX-1048TZDS connects to the main unit or either the RAXN-LCD or RAM-1032TZDS when mounted remotely. The RAX-1048TZDS occupies one display position in the FX-2003-12NXTDS, BB-1000 or BB-5000 Series enclosures.



RAM-1016TZDS Main Remote LED Annunciator

The RAM-1016TZDS Remote LED Annunciator provides 16 points of LED annunciation as well as 16 trouble LEDs. The RAM-1016TZDS has indicators for A.C. On, Common Trouble and Signal Silence and controls for System Reset, Lamp Test, Fire Drill, Buzzer Silence and Signal Silence. The RAM-1016TZDS mounts in a BB-1000 series enclosure.

Dimensions for Annunciator Module Enclosures

Model	Dimensions
BB-1001	9"H x 12.75"W x 1.2"D
BB-1002	18"H x 12.75"W x 1.2"D
BB-1003	26.4"H x 12.75"W x 1.2"D
BB-1008	33"H x 22.5"W x 1.25"D
BB-1012	45"H x 22.5"W x 1.25"D

Electrical Ratings

MCC-1024-6ADS

AC Line Voltage	120V 60Hz / 240V 50 Hz, 2A / 1A primary	
Power Supply Ratings	6 Amps. max. (secondary)	
For Indicating Circuits	24VDC unfiltered, 5 Amps maximum	
Charging Capability	10-24 AH batteries	
Current Consumption	Standby	200 mA
	Alarm	350 mA

MCC-1024-12ADS/MCC-1024-12XTDS

AC Line Voltage	120V 60Hz / 240V 50 Hz, 4A / 2A primary	
Power Supply Ratings	6 Amps. max. (secondary)	
For Indicating Circuits	24VDC unfiltered, 10 Amps maximum	
Charging Capability	17-40 AH batteries	
Current Consumption	Standby	200 mA
	Alarm	350 mA

Ordering Information

Model	Description
Main Control Unit	
MCC-1024-6ADS	Main Control Unit, 6 Amps. Mounts in UB-1024DS.
MCC-1024-12ADS	Main Control Unit, 12 Amps. Mounts in UB-1024DS.
MCC-1024-12XTDS	Main Control Unit, 12 Amps. Mounts in BBX-1024DS(R)
Adder Modules	
DM-1008A	Eight Class B (Style B) or 4 Class A (Style D) Initiating Circuit Module
SGM-1004A	Four Class A/B (Style Z/Y) Notification Appliance Circuit Module (Rated at 1.7 Amps per circuit)
RM-1008A	Eight Relay Circuit Module c/w eight form C relays (Rated for 28 VDC @ 1 Amp max. per relay)
Auxiliary Modules	
UDACT-300A	Digital Alarm Communication Transmitter/Dialer Module
PR-300	Polarity Reversal and City Tie Module
Enclosures	
UB-1024DS	Universal black backbox. Requires DOX-1024DS(R) door.
DOX-1024DS	White door for UB-1024DS backbox
DOX-1024DSR	Red door for UB-1024DS backbox
BBX-1024XT	Enclosure for MCC-1024-12XTDS c/w removable white door, black backbox and CAT-30 lock and key.
BBX-1024XTR	Enclosure for MCC-1024-12XTDS c/w removable red door, black backbox and CAT-30 lock and key.
FA-XT-TRB	Black Semi-Flush Trim Ring for BBX-1024XT(R) enclosure
Remote Annunciators	
RAM-1032TZDS	Main Remote LED Annunciator c/w 32 Bi-Colored LEDs and 32 Trouble LEDs
RAM-1016TZDS	Main Remote LED Annunciator c/w 16 Bi-Colored LEDs and 16 Trouble LEDs
RAX-1048TZDS	Programmable LED Annunciator Module c/w 48 Bi-Coloured LEDs and 48 Trouble LEDs
BB-1001	Remote Enclosure. Houses one module. Add suffix "R" for red door.
BB-1002	Remote Enclosure. Houses two modules. Add suffix "R" for red door.
BB-1003	Remote Enclosure. Houses three modules. Add suffix "R" for red door.
BB-1008	Remote Enclosure. Houses eight modules. Add suffix "R" for red door.
BB-1012	Remote Enclosure. Houses twelve modules. Add suffix "R" for red door.

NOT TO BE USED FOR INSTALLATION PURPOSES.



Canada

25 Interchange Way
Vaughan, Ontario L4K 5W3
Telephone: (905) 660-4655
Fax: (905) 660-4113

U.S.A.

4575 Witmer Industrial Estates
Niagara Falls, NY 14305
Toll Free: (888) 660-4655
Fax Toll Free: (888) 660-4113

Distributed by:

Web page: <http://www.mircom.com>

Email: mail@mircom.com

ISO 9001:2008
REGISTERED



CAT. 5620
Rev. 6