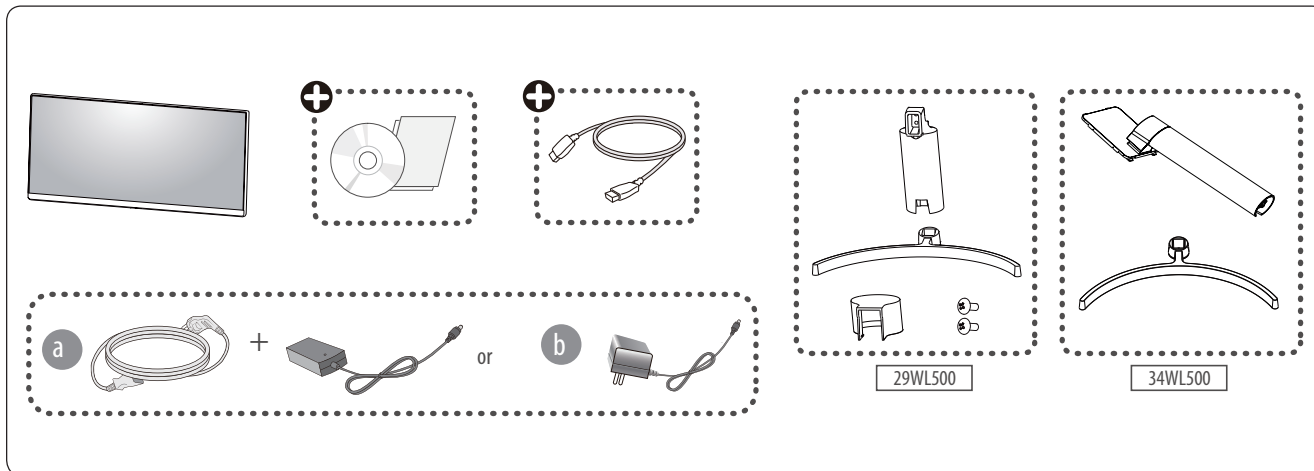




Quick Start Guide



Images shown in manual may vary depending on model

+ Depending on model

+ Depending on country

Unpacking

Check your product box for the following items. If there are any missing accessories, contact the local dealer where you purchased your product. The illustrations in this manual may differ from the actual product and item.

MFL71829606



(2107-REV00)



It is recommended that use the supplied components.



www.lg.com

You can download manuals from the LGE website.



- Using a DVI to HDMI / DP (DisplayPort) to HDMI cable may cause compatibility issues.
- Make sure to use the supplied cable. Otherwise, this may cause the device to malfunction.

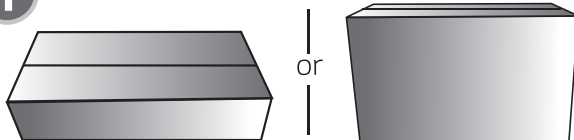
Handling Guide



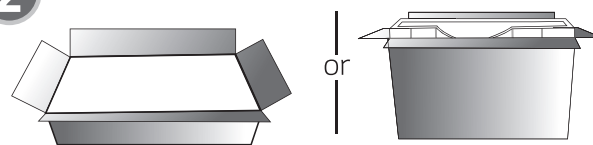
- Be careful not to press the screen with your fingers or palm.



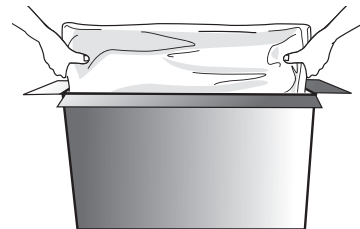
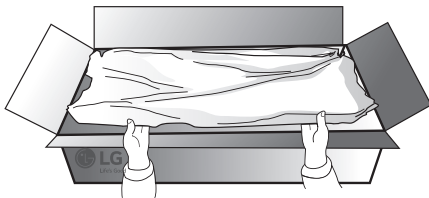
1



2



3



- Be careful not to push on the screen when taking the set out from the package.

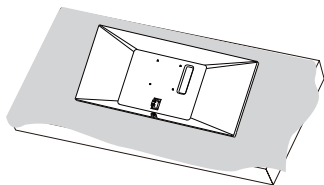
Image shown may vary depending on model



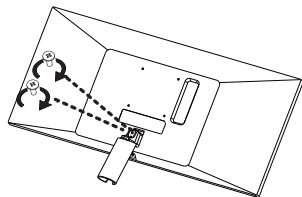
CAUTION
Image shown may differ from your monitor.
When attaching the stand to the monitor set, place the screen facing down on a flat cushioned table or surface to protect the screen from scratches.

1

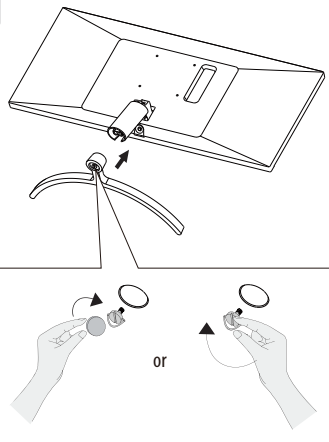
29WL500



2

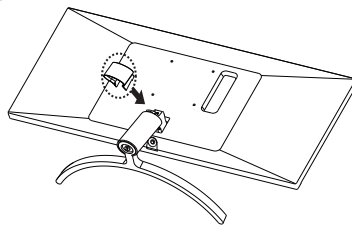


3

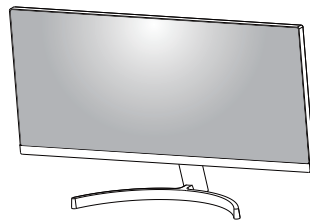


4

29WL500

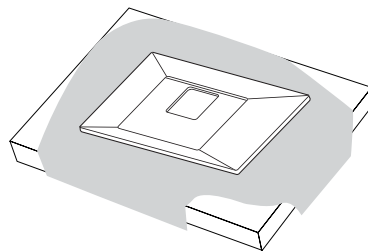


5



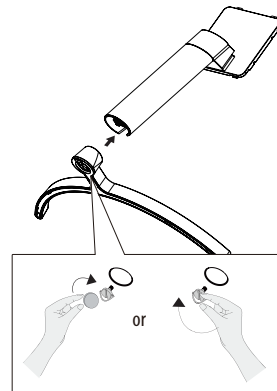
1

34WL500

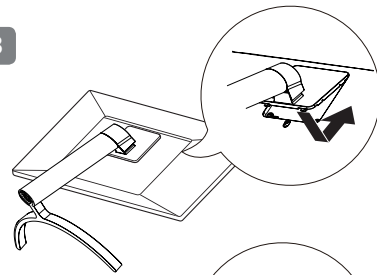


2

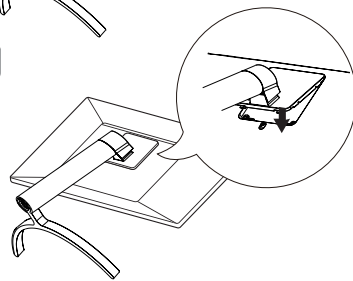
34WL500



3



4



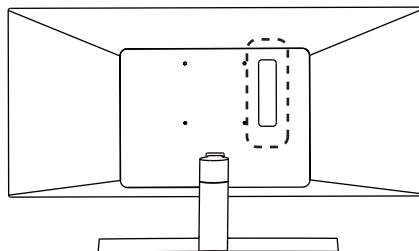
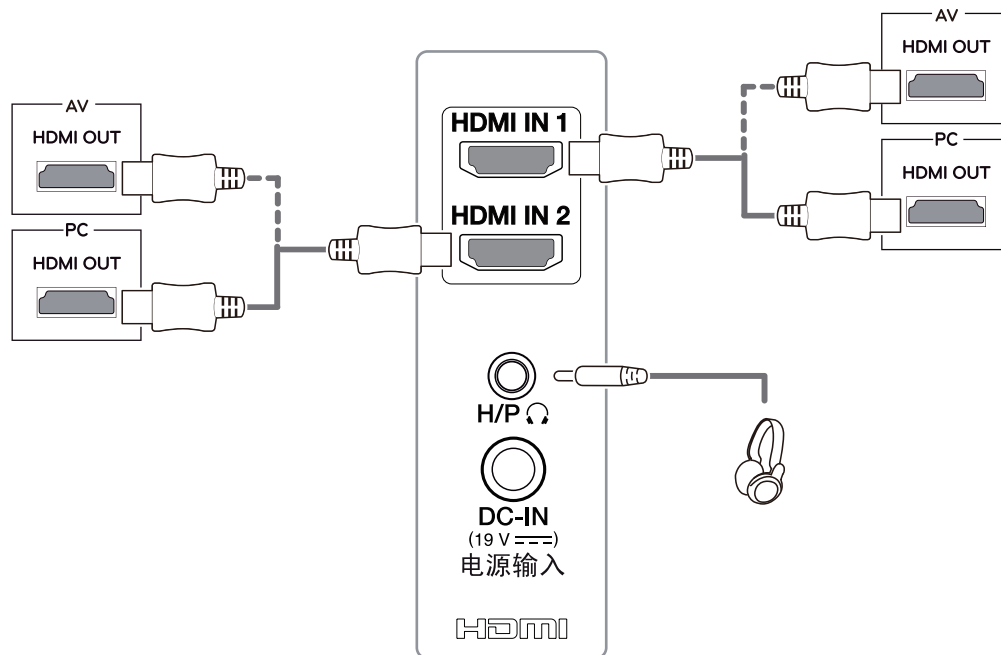
**NOTE**

Image shown may vary depending on model .
All connection cables & devices shown in the picture are not included along with the product.



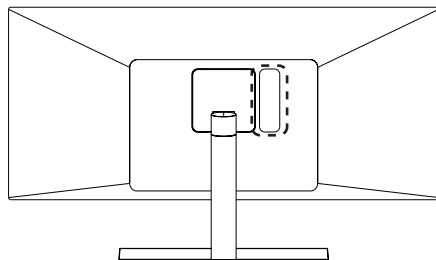
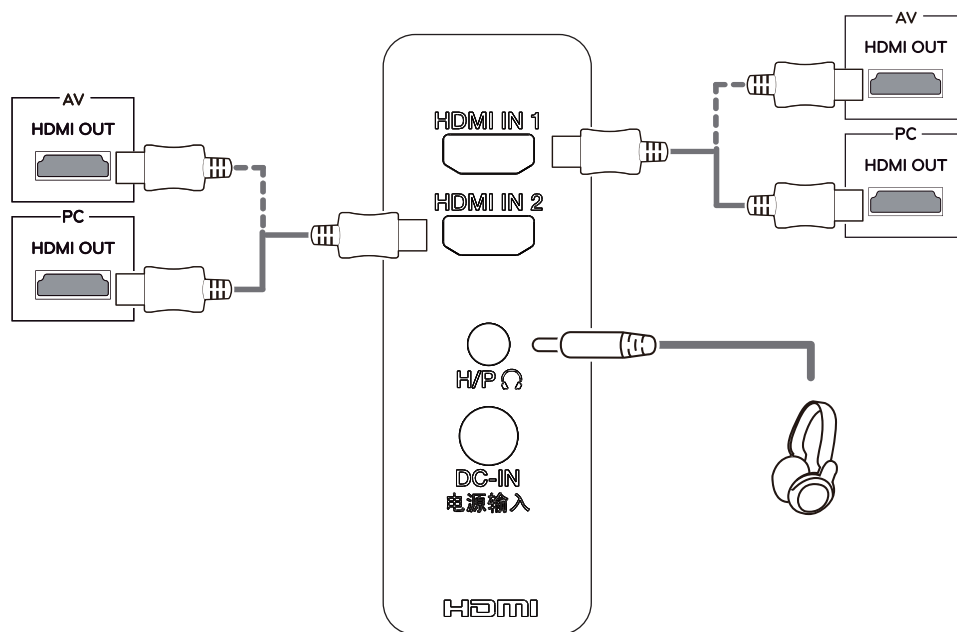
**NOTE**

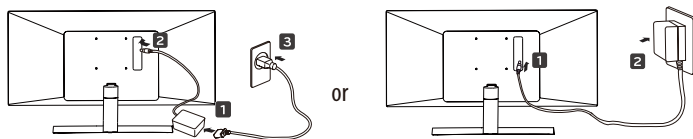
Image shown may vary depending on model .

All connection cables & devices shown in the picture are not included along with the product.



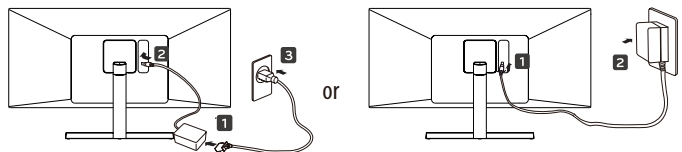


29WL500



or

34WL500



or

29WL500

34WL500

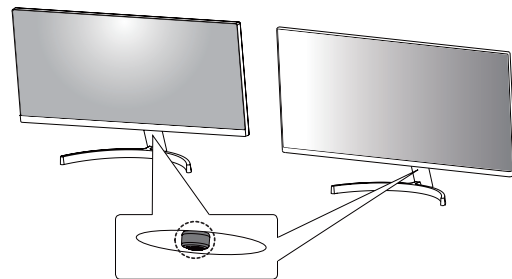


Image shown may vary depending on model.