

VIDEO DOOR PHONE

OOBVDPS1



Quick Start Guideline

Please read it carefully before using the product, and keep this handy

Packing List

After opening the package, please make sure the doorbell (hereinafter referred to as the Equipment") is in good condition. Make sure parts below is included.

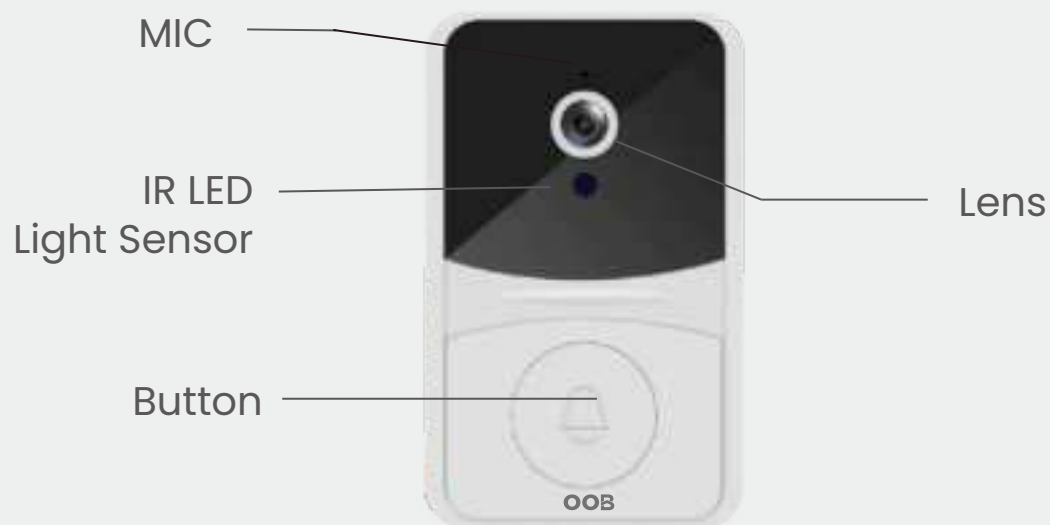


Main Unit
(Including Mounting Bracket)



Chime

Appearance Introduction



IR LED

The ambient light is not enough, this can increase picture brightness

Light sensor

Used to collect environmental light status, when ambient light drops down to 2 Lux, the IR LED will turn on automatically.

MIC

Audio Capture

Button

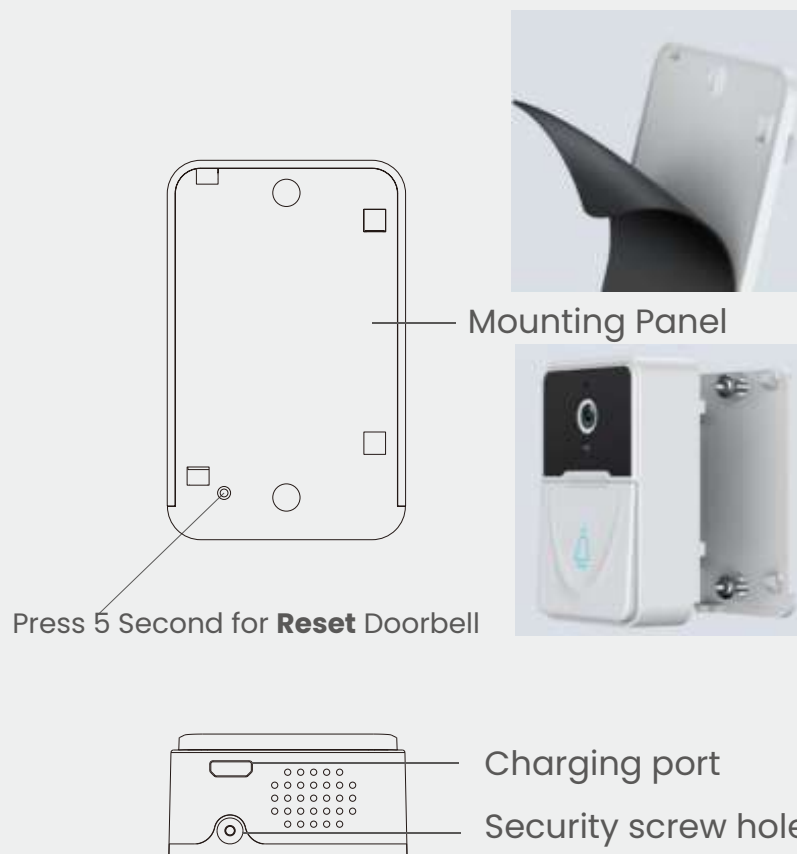
Doorbell button

Lens

Video image capture

Indicator Light

Blinking blue light: Configuration status;
 Red light ON: Failed to connect to WiFi;
 Blue light ON: Connect to phone successfully;
 Red and blue flash: Connect to WiFi successfully



Button To reset the device, long press this button for 5 seconds

Battery Build in li-ion battery

USB Interface Micro-USB-port-charging

Mounting Port Use this port to mount the camera to bracket

Reset To restart the device

Setup Device

Thank you for choosing our products! Please follow below instruction to setup and use your doorbell device.

1. Downloading and installing the APP

Open App Store (for iOS) or Google Play Store (for Android) on your device, search app or scan QR code as following to download the right App for your device.



Smart Life



2. Setting up the APP

Before you begin;

- Make sure the APP is installed to your device
- Make sure that your device is connected to a 2.4GHz Wi-Fi networks, 5GHz network is NOT compatible.

User Register

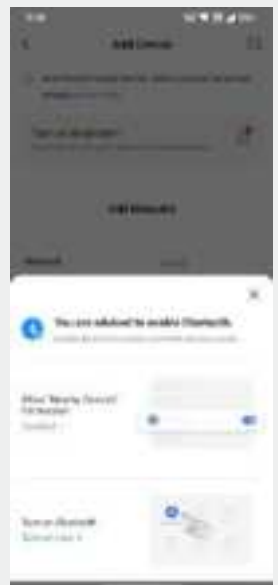
New user register it according to guide steps, already registered user just login it

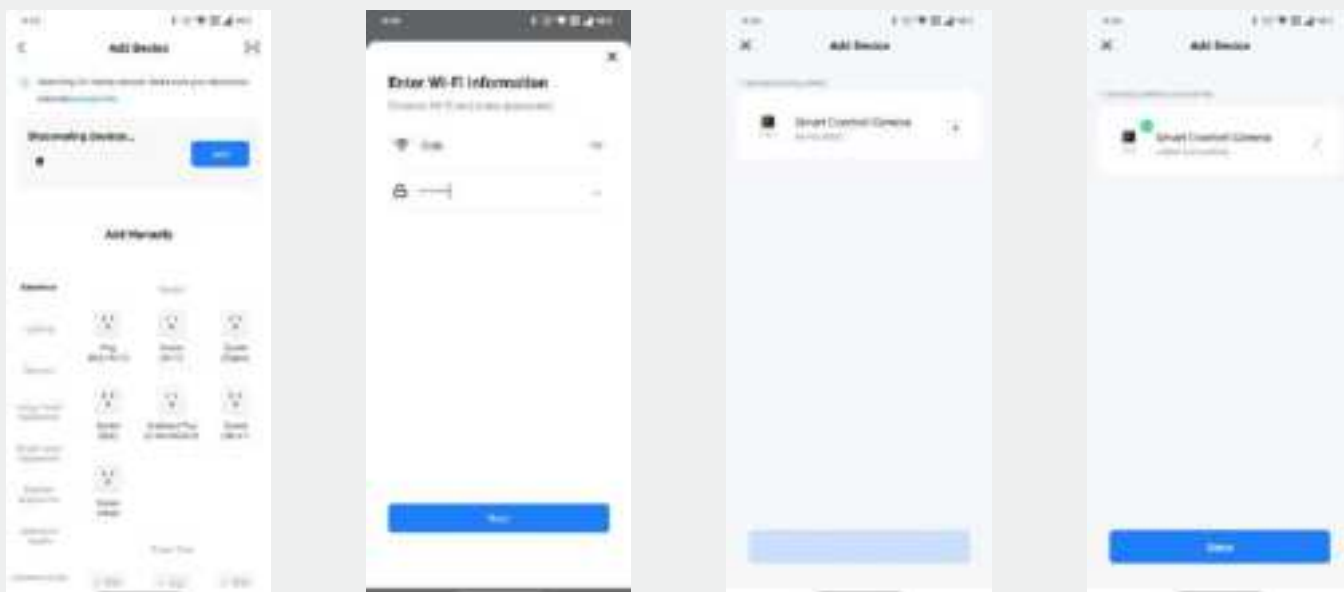
3. Add the device

Before add, turn on the bluetooth on the mobile setting.

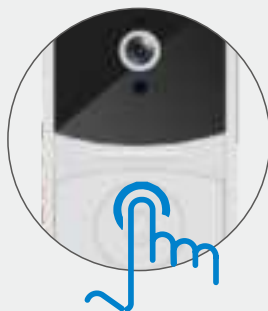
Open the app and tap **"Add device"**

Select device: Smart Doorbell Camera, and it will show the WiFi network setting. the name of the WiFi network will automatically be filled in, enter the WiFi password and tap **"Next step"** and confirm.

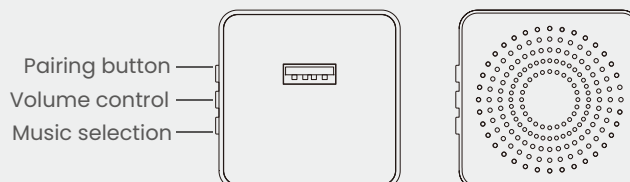




Follow the app instruction, press and hold the ring button for 5-10 seconds, with a voice notification "Reset successfully", the device will reset to default setting automatically. Please confirm you heard it and choose next step, the app will searching the device and add it



Pairing with Chime (Optional)



Press and hold Volume button for 5 seconds until the LED indicator lights up, Wi-Fi enters into pairing status. Then press the button on the Wi-Fi video doorbell within 5 seconds, pairing is completed once LED indicator on the Chime is flashing. When above procedure is finished, pairing is quit automatically.



www.oobsmarthome.com

OOB SMARTHOME INDIA PVT. LTD.

B-408, Shantiniketan Business Center,
Nr. Domino's Pizza, Gangotri Circle, Nikol
Ahmedabad - 382350, Gujarat, INDIA.

M : +91 90 81 87 87 89 | E : reach@oobsmarthome.com

Available On



Follow Us



Recognized & Trusted By

