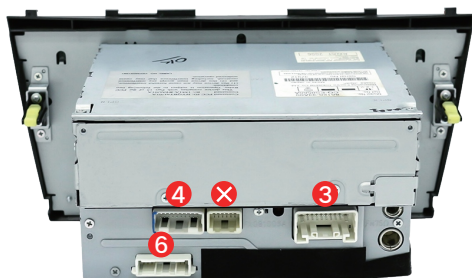
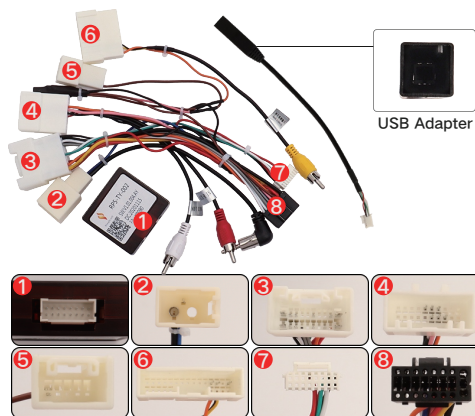


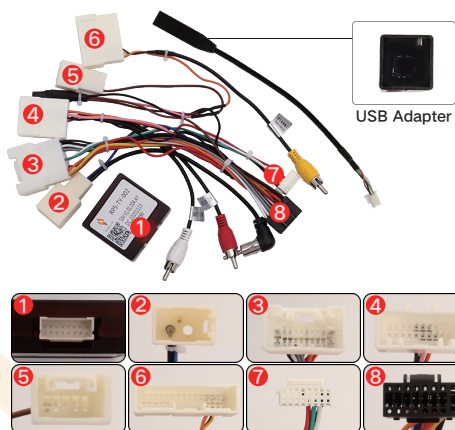
1. Check if your vehicle's factory radio matches the provided picture below.
2. Connect the cable plug that matches your car's head unit.

Note: Not all plugs need to be connected. Please note that some factory features may be lost if the factory radio is removed, such as a CD player.

**Model A:** Support factory JBL Amplifier, backup camera, USB cable

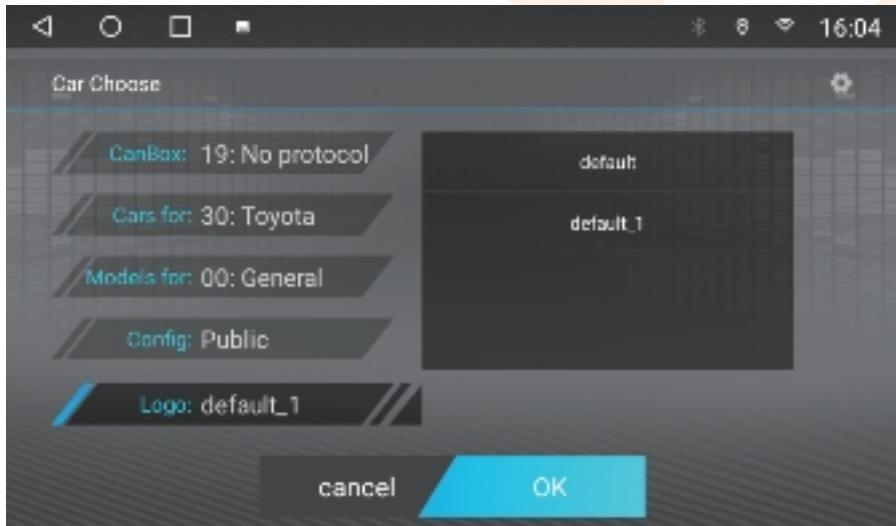


**Model B:** Support factory JBL Amplifier, backup camera, USB cable



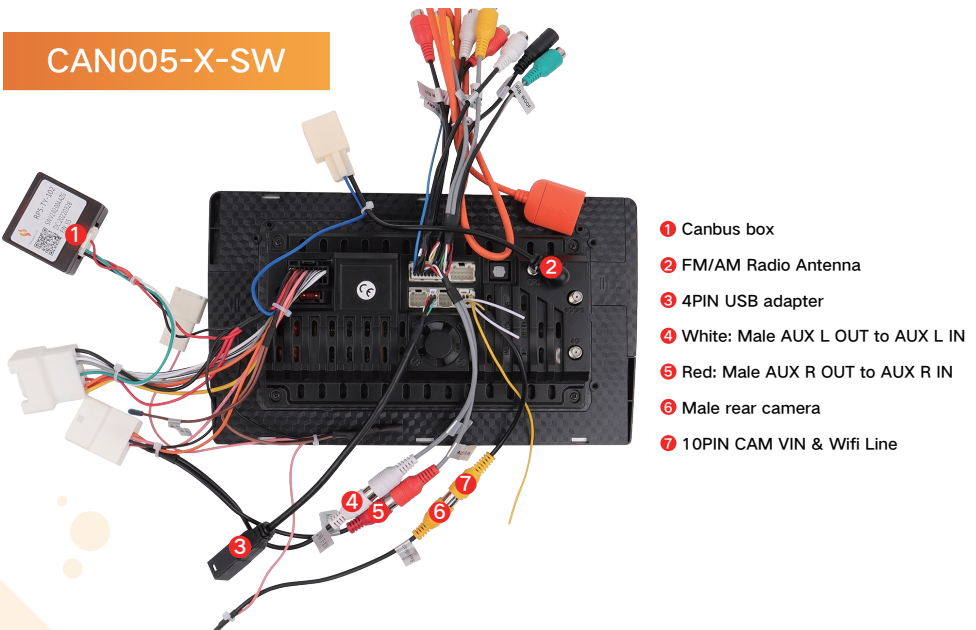
3. CAN005-X Harness comes with a Simple Soft Canbus box.

Note: Please set up the Canbus option to "No Canbus/No Protocol".  
Don't need to set up the Toyota canbus option for CAN005-X.



TS10 radio's Can Bus ption as a reference

4. Wiring harness connection diagram



5. If you require any assistance or have any inquiries, please do not hesitate to contact ViaBecs Tech through Amazon.