

SereneLife



*SLCASN25*  
**Wheeled Mobile Foot-Pump Hand Wash Stand**  
Water Faucet Washing Station (7+ Gal. Capacity)

***User Manual***

## INTRODUCTION

**To ensure you obtain full benefits from your new Portable Handwash Sink:**

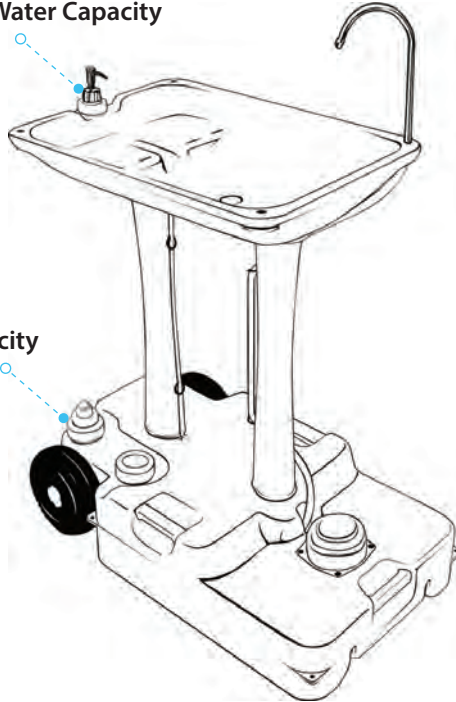
- Please read this instruction booklet carefully, and follow all instructions.

### ▶▶▶ *Assembly Instructions*

1. Please always assemble according to the instruction.
2. Base tank can be fixed on ground through four holes at the corner if necessary.

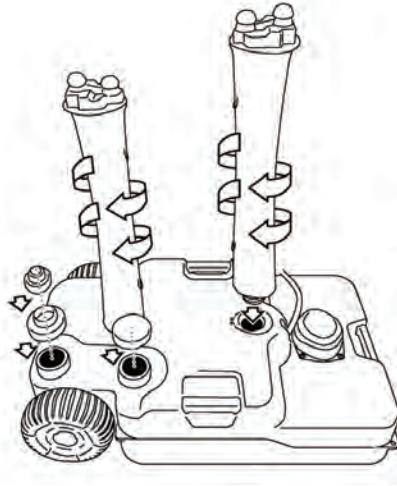
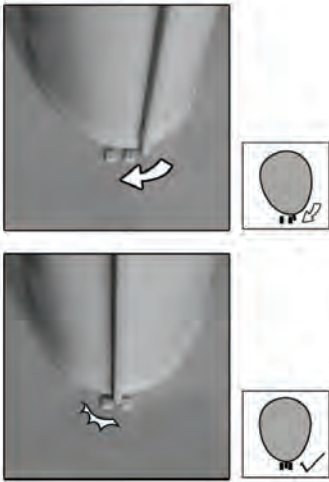
5L Liquid Soap/Fresh Water Capacity

30L Fresh Water Capacity

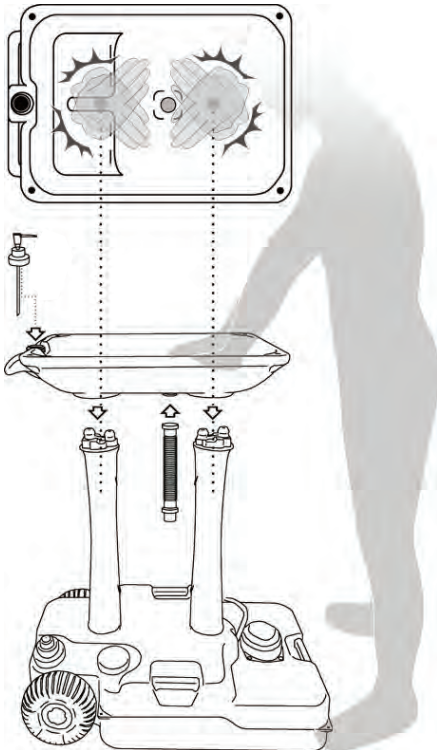


## ▶▶▶ Assembly Instructions

1. Screw the column to the fixed point.



2. Install the washbasin onto the column



Basin plug

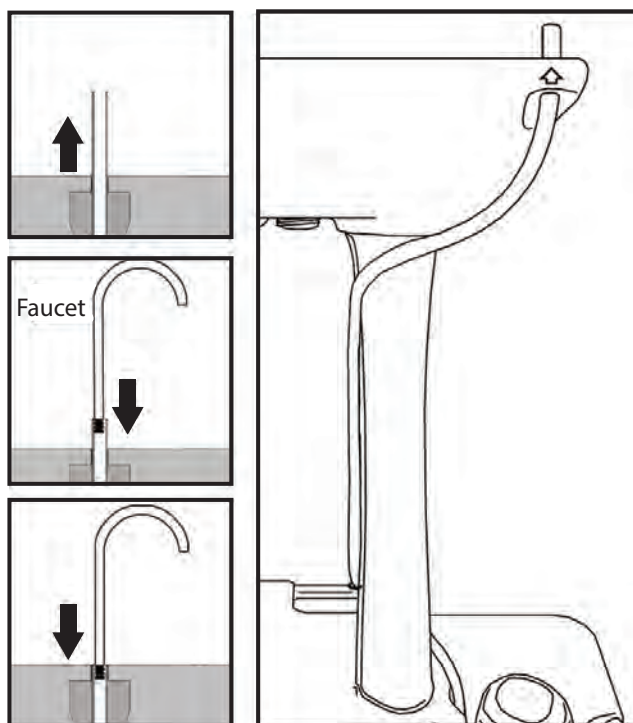


**NOTE:** There's a small opening at the bottom of the basin which is necessary when cleaning the inside of the basin is needed. This opening needs to be covered by a rubber cap & fastened by an adjustable screw.

**DO NOT** forget to fasten the screw which may lead to liquid soap leakage.



### 3. Install the water pipe and faucet.



Base tank can be fixed on ground through four holes at the corner if necessary.  
Pegs are sold separately, not included.



## FEATURES:

- High-Density Polyethylene Construction
- Stands Years of Use
- Easy to Assemble
- Self-Contained Bottom Fresh Water Tank
- Foldable Metal Handle with Two Large Wheels on the Bottom Tank
- Includes Wheels for Easy Movement even after Fully Filled
- Hands-Free Foot Pump, Easy to Operate
- 220ml Continuously Water Flow per Step
- Extra-Large Handwash Basin and Liquid Soap Dispenser
- Includes Flexible Drain Hose
- Compact and Lightweight Design
- Can be Used Widely for Public Areas, Checkpoints, Worksites, Camping, and any Outdoor Activities

## WHAT'S IN THE BOX:

- (1) Bottom Water Tank
- (1) Wash Basin
- (2) Column Stands
- **Bag of Spare Parts, includes:**
  - (1) Faucet
  - (1) Flexible Drain Hose
  - (1) Soap Dispenser
  - (3) Caps
  - (1) Adjustable Screw
  - (1) Basin Plug

## TECHNICAL SPECS:

- Construction Material: High-Density Polyethylene
- Maximum Weight Capacity: 22.05 lbs.
- Bottom Water Tank Capacity: 30 Liters/ 7+ Gallons
- Liquid Soap Tank Capacity: 5 Liters
- Foot Pump Per Step: 220ml.
- Basin Size: 19.69" x 15.94" -inches
- Drainage Hose Length: 2.7' ft.
- Product Dimension (L x W x H): 28.35" x 16.54" x 31.50" -inches



# SereneLife

**Questions? Issues?**

We are here to help!

Phone: (1) 718-535-1800

Email: [support@pyleusa.com](mailto:support@pyleusa.com)

