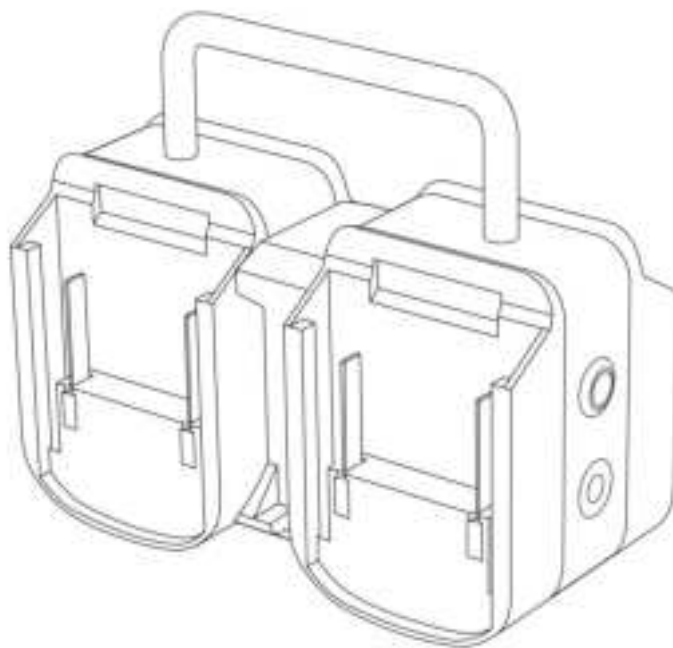




Link Power Pack

Power Bank for Starlink® Mini



Quick Start

V 1.1

Introduction

Recognizing the Link Power Pack

Link Power Pack is a power pack specifically designed for DeWALT®/Makita® battery packs.

Link Power Pack can mount 1 to 4 battery packs,

- BP4SL3-D4 for DeWALT® Interface
- BP4SL3-M4 for Makita® Interface.

Link Power Pack supports XT60 and DC outputs, XT60 outputs 15V~21V (65W Max) and DC outputs 15V~21V (50W Max).

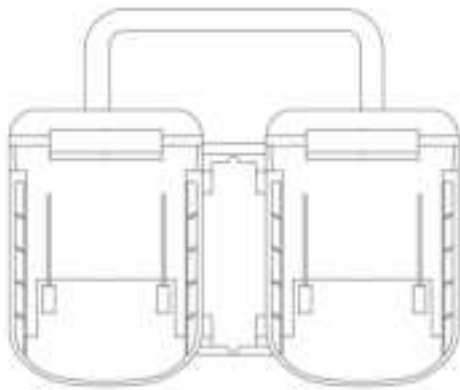
The Link Power Pack's DC port can power the Starlink® Mini!

Simply press and hold the power button to turn the DC output on and off to control the StarlinkMini.

Bluetooth can be activated by pressing the power button three times in succession. Once paired, it enables remote control of the DC output interface.

NOTE: XT60 port and DC port are for output only

What's In the Box

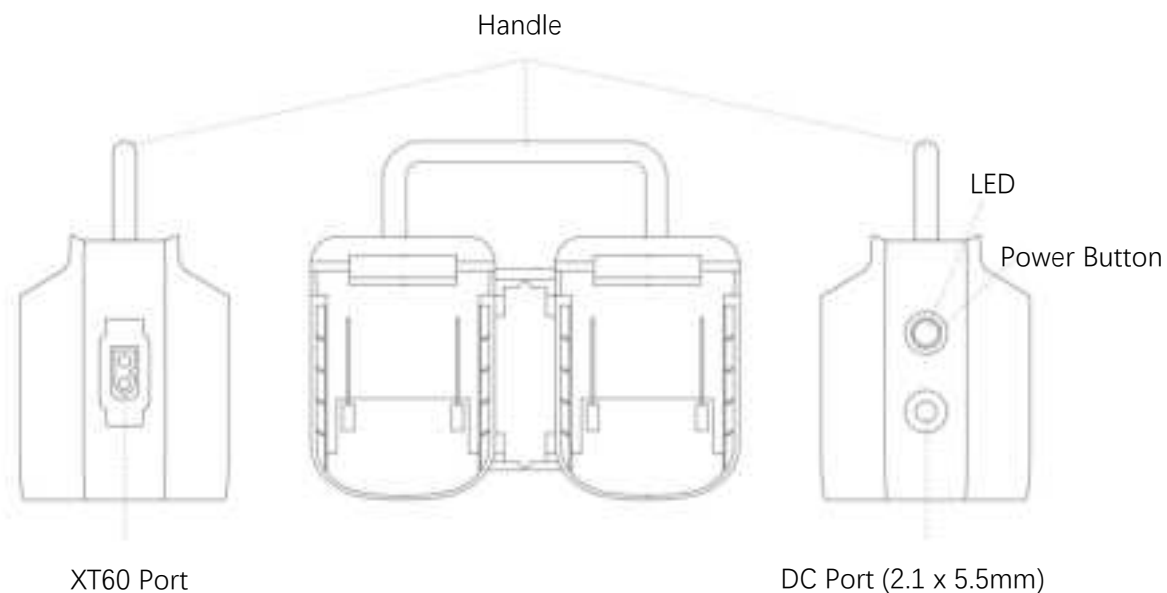


Link Power Pack

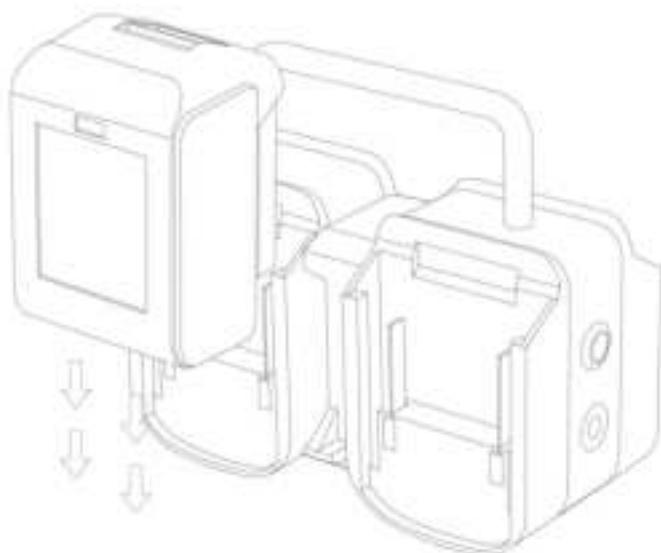


DC-to-DC Cable

Device Overview

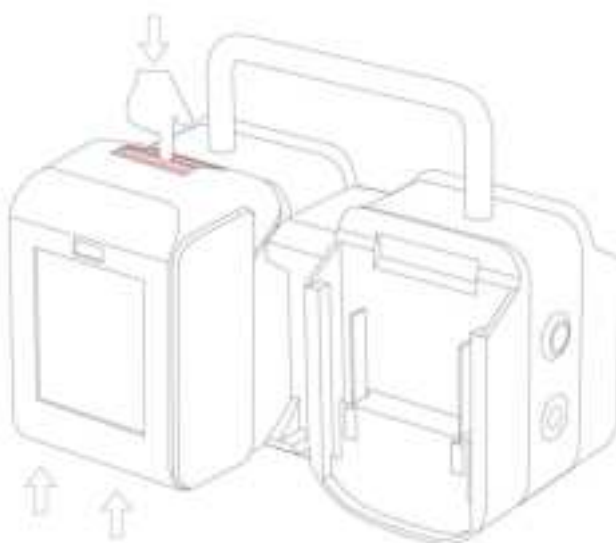


Install the battery



Simply align the connector and press down to complete the installation

Remove the battery



Press the button and lift it upwards for smooth removal.

Manually Controlling the DC Port

You can manually enable or disable the Link Power Pack 's DC port, which in turn powers your Starlink® Mini on or off.

To do this, press and hold the Power Button for at least 2 seconds. The LED indicator will quickly flash twice to confirm this action.

- When the DC port is enabled, the LED indicator will gently pulse.
- When the DC port is disabled, the LED indicator will turn off.

Using Web App

NOTE: The Web App currently only works on following browsers:

- Windows/macOS: Chrome, Edge, Opera
- Android: Chrome, Edge, Opera, Samsung Internet
- iOS: [Bluefy](#)

NOTE: The Web App can function offline after your initial visit.

Access Web App



Scan the following QR code,

Or type in the URL <https://peakdo.com/pwa/link-power-1/index.html> manually.

(Optional) Install Web App

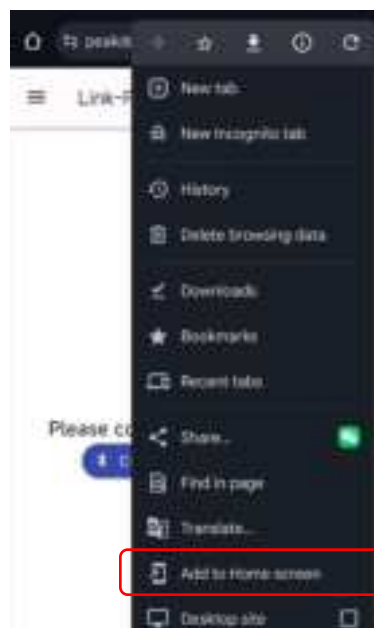
NOTE: You may need to grant your browser 'Home screen shortcuts' permission.

You can access the Web App directly in your browser. For a more integrated experience, you can also install it like a native app, which provides a launch icon on your desktop or allows it to be pinned to your Windows Taskbar.

When you visit the Web App for the first time, your browser may prompt you to install it.

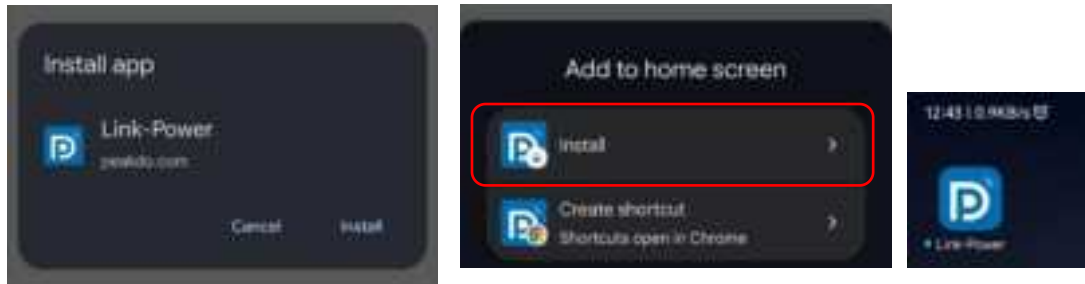


If not, you can typically find the installation option via your browser's "Add to Home screen" or similar menu.



Link Power Pack Quick Start

Follow the on-screen guide to install the Web App:



Connect to Link Power Pack

The Web App communicates with Link Power Pack via Bluetooth.



You can connect to your Link Power Pack by tap the “Connect to a device” button.

Your browser will scan for all nearby Link Power Pack devices and display them in a list, allowing you to select one to pair.

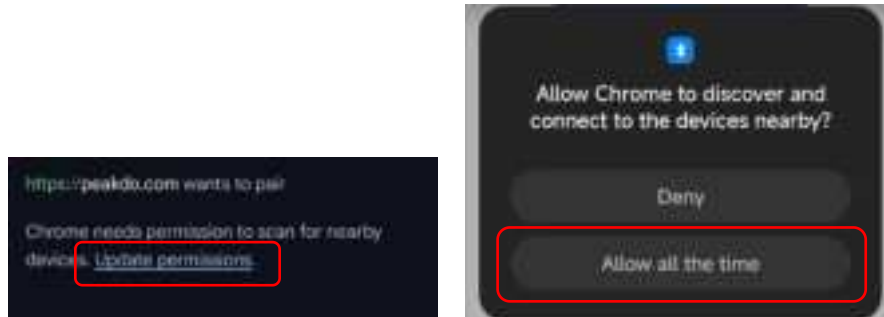
NOTE: In some situations, a previously paired or bonded device may not show up in the list. You can unpair or remove the bond from your system and try again.

Link Power Pack Quick Start

Grant permission to Browser

If your browser lacks Bluetooth access permission, it may prompt you to grant it.

Follow the on-screen guide to allow access:

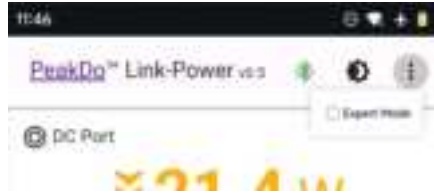


The UI




Following is the UI of the Web App, it's pretty straightforward.

Some advance actions hidden by default. You can show them by check the “Expert Mode” menu in the three dots menu:



Pair with Link Power Pack

Some actions are marked with the  icon because they require authentication. These are often advanced or sensitive actions.

When you perform one of these actions, your operating system (OS) will prompt you to enter a PIN to pair with the Link Power Pack device. You'll only need to do this once, unless you delete the Link Power Pack bond from your OS settings.

NOTE: The default PIN is "020555".

Troubleshooting

According to Mozilla's Web Bluetooth documentation

(https://developer.mozilla.org/en-US/docs/Web/API/Web_Bluetooth_API#browser_compatibility), Web Bluetooth is supported on:

- Windows/macOS: Chrome, Edge, Opera
 - Android: Chrome, Edge, Opera, Samsung Internet
 - iOS: [Bluefy](#) (not on the list, but has been confirmed on iOS 18.5)
-
1. Activate Link Power Pack, and make sure Bluetooth is turned on: the Bluetooth icon should be highlighted white (not green or dim grey) on top of the screen.
 2. Make sure your system has Bluetooth hardware and it is turned on:
 - For Windows
 - Go to `Settings` → `Bluetooth & devices`. Make sure Bluetooth is turned on
 - In `Bluetooth & devices`, click `Add device`
 - Choose `Bluetooth`
 - Wait for Windows to discover your BLE device, you should see the device named `Link Power Pack` in the list
 - For Android
 - Make sure Bluetooth is turned on

Link Power Pack Quick Start

- you should see the device named `Link Power Pack` in the `Available devices` list
3. Install and launch a supported browser

Specifications

Name	Link Power Pack
Model	BP4SL3-D4 (DeWALT® Interface) BP4SL3-M4 (Makita® Interface)
DC port	15V~21V (50W Max)
XT60 port	15V~21V(65W Max)
Work unit	1~4 Battery
Dimensions	153mm x 70mm x 130 mm
Weight	~370g