



1-800-477-6655
buyritebeauty.com

OBSIDIAN STYLING CHAIR

NIN-5502

INSTRUCTION MANUAL



List of Parts & Tools



Hydraulic Base and Pump



Chair Top



Footrest

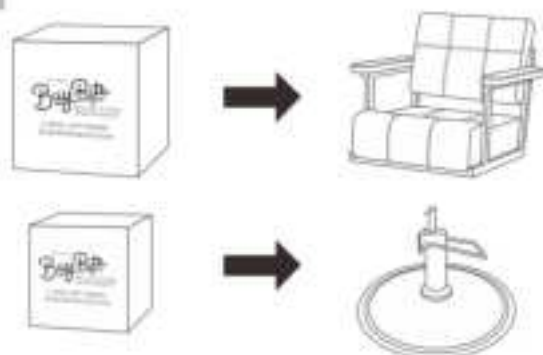


M8x30mm



14mm

Step 1



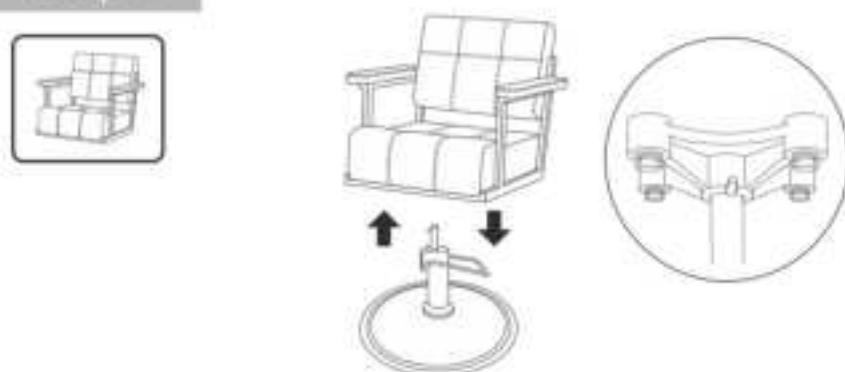
1. Carefully remove the chair top and hydraulic base from their respective shipping cartons.

Step 2



1. Pump the hydraulic to raise the shaft to the highest position, preparing to install the chair top on the hydraulic base.

Step 3



1. To securely attach the chair top to the hydraulic base, align the notch in the seat bracket that is located on the bottom of the chair with the pin on the metal shaft of the hydraulic and place the chair top on the base. Ensure the pin on the metal shaft and the notch in the seat bracket align for proper installation.
2. Carefully sit in the chair to ensure the metal shaft is fully secured into the seat bracket. Note the pin will not slide fully into the top of the seat bracket.
3. If the chair top is not stable, repeat steps 1 and 2 above. Additionally, check the screws on the bottom of the hydraulic base that secure the pump to the base plate to confirm they are securely tightened.

Step 4



1. Locate the 2 screws on each side of the bottom of the chair top. Using the 14mm wrench provided, remove the screws from the chair top. Align the holes on the footrest with the holes in the chair top and insert one screw on each side to ensure the footrest does not fall. Then apply the other two screws on each side and tighten all four screws.
2. Ensure all screws are tight and secure prior to use but be careful not to overtighten.

Product care



Brush away excess hair



Clean surface with damp cloth or
use simple soap & water solution



Avoid using corrosive clean-
ing agents such as bleaches



Do not remove upholstery for
cleaning

Product Information

1. Enjoy your new chair!
2. Remember to always keep the hydraulic base in the upright position and never stand solely on the footrest as it will tip.
3. After assembly and before use, we suggest pumping the hydraulic to full height and back down several times to prime the hydraulic fluid. This will keep the pump smooth and responsive.
4. Note that short quick pumping is more effective for adjustments than pressing the lever all the way down each time.
5. If you have any questions or concerns, please contact our customer experience team at 912-335-4445.