



# KOGAN SMARTERHOME™ WIRELESS WATER TIMER

(WITH DUAL VALVES)

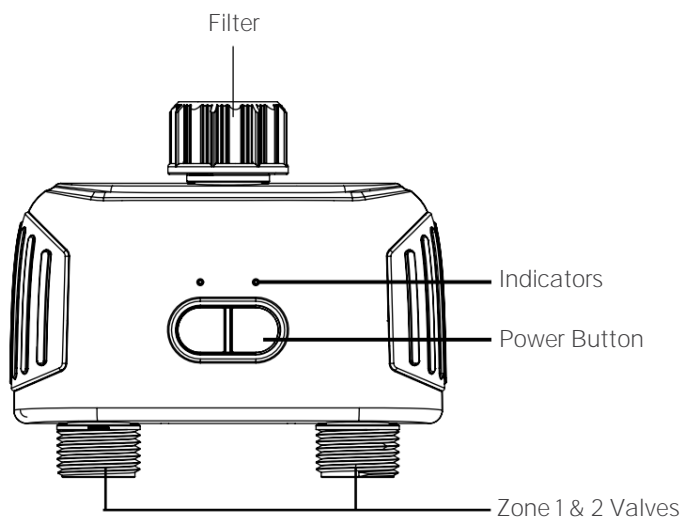
KASMWATMRDA

Safety & Warnings	3
Overview	3
Installation	4
Connect to SmarterHome™ App	5
Google Home Control	14
Amazon Alexa Control	17
Operation	20
Specifications	21
Troubleshooting	22
Notes	23

# SAFETY & WARNINGS

- The best range for connection and control is within 15m in an open area.
- Do not use this timer when the air temperature is below 4.5°C. Remove the timer from the faucet and store it indoors to prevent freezing or damage to the timer.
- Dirt particles can become trapped in the filter. Clean the filter regularly.
- Ensure that the timer is completely dry when replacing the batteries.
- To prevent leakage, ensure that the timer is tightly attached to the faucet. Add a rubber washer and seal tape if necessary.

## OVERVIEW



# INSTALLATION

1. Remove the battery compartment cover on the back of the timer.
2. Insert x4 AA (1.5V) alkaline batteries (not provided) and replace the battery cover.

## Note:

Do not mix alkaline, standard (carbon-zinc) or rechargeable batteries.

3. Screw the timer into a water faucet.

## Notes:

- Do not connect the water timer to a water tank faucet, as the water pressure will be too low.
- Do not install the timer in an underground valve box or anywhere the Bluetooth signal will be obstructed.

4. Connect a hose to one or both valves.
5. Turn the water on. The water must remain on for the timer to work properly.

## Notes:

- The water flow is reduced by half when the two zones are turned on at the same time.
- The water flow in the two zones may be different if you turn on one zone first and then turn on the other zone.

# CONNECT TO SMARTERHOME™ APP

## Install App

Download the “Kogan SmarterHome” app from the Play Store (Android) or App Store (iOS).



**Play Store (Android)**

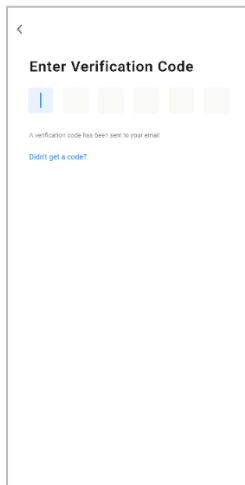
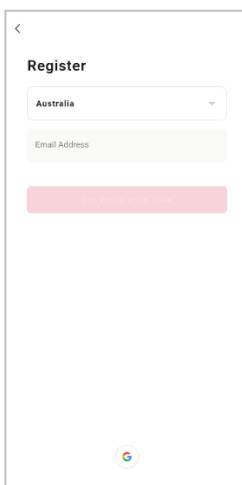
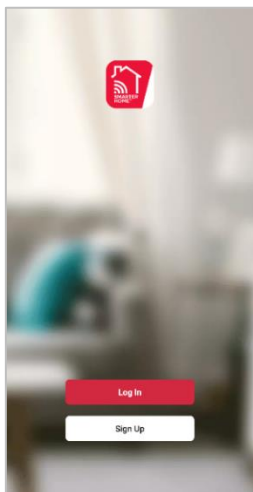


**App Store (iOS)**



## To Register:

1. If you already have a SmarterHome account, select ‘Log In’. To register a new account, select ‘Sign Up’.
2. The system will automatically recognise your country. If needed, you can manually select your country from the drop-down box. Enter your email address and tap ‘Get Verification Code’ to continue.
3. A 6-digit code will be sent to the submitted email address. Enter this code before the one-minute timer expires.
4. Continue to the next page and complete your SmarterHome profile.



## Set Device in Pairing Mode

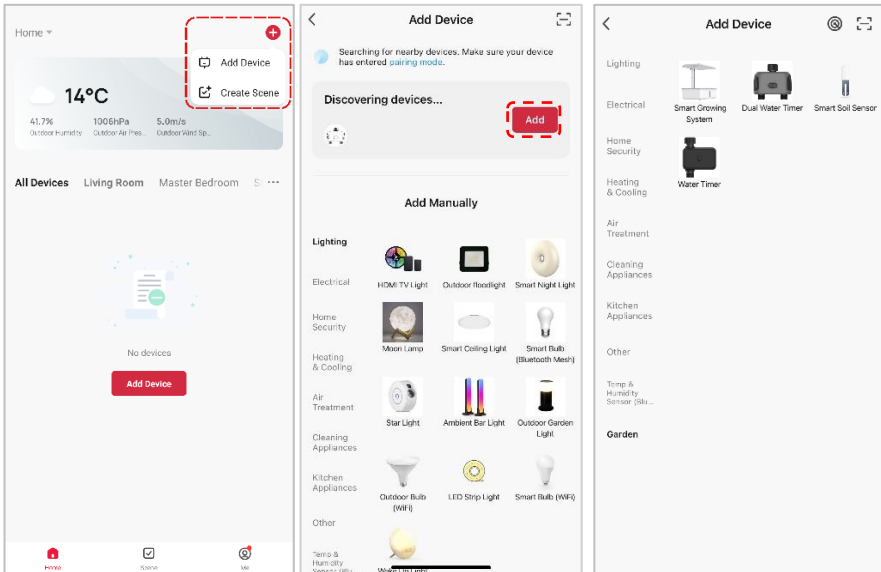
When the device is first turned on, it may automatically enter pairing mode (the indicators rapidly flash green at the same time).

If not automatically in pairing mode when powered on, you can manually set the device in pairing mode by pressing and holding the Power button for 6 seconds until the indicators rapidly flash green at the same time.

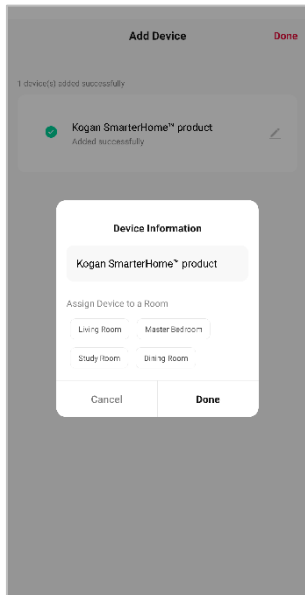
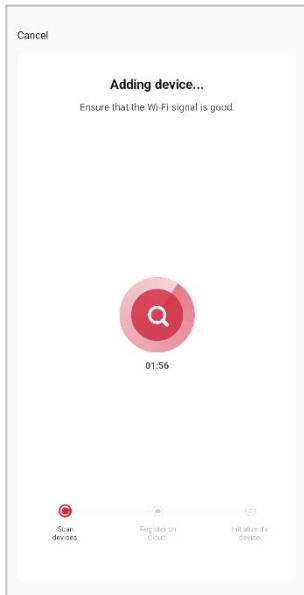
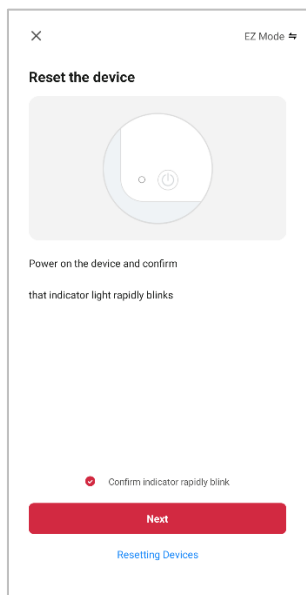
## Add Device Through Bluetooth

In situations where a gateway isn't present, this device can be connected to and controlled using your smartphone through Bluetooth. This method, however, has a limited range and once the device is outside of the smartphone's Bluetooth range, the device will lose its connection and appear offline.

1. Ensure Bluetooth is enabled on your mobile phone.
2. Once registered, tap "Add Device" on the app's home page, or the "+" in the upper right corner, to add a new device through the network.
3. The app will discover nearby Bluetooth devices. Tap 'Add' when the device appears. Alternatively, select the product type from the list of options in the app (Garden > Dual Water Timer).



4. Ensure that the device is in pairing mode, with the Wi-Fi indicator rapidly flashing, and tap “Confirm light is rapidly flashing”.
5. The device will commence the pairing process and connect to the app. Ensure the mobile phone and the SmarterHome™ device are kept close until connection is complete.
6. After successfully being added, you will have the option to rename the device and assign it to a location. It will now be listed on the app’s home page. Tap the device listing to enter its control page.



#### Note:

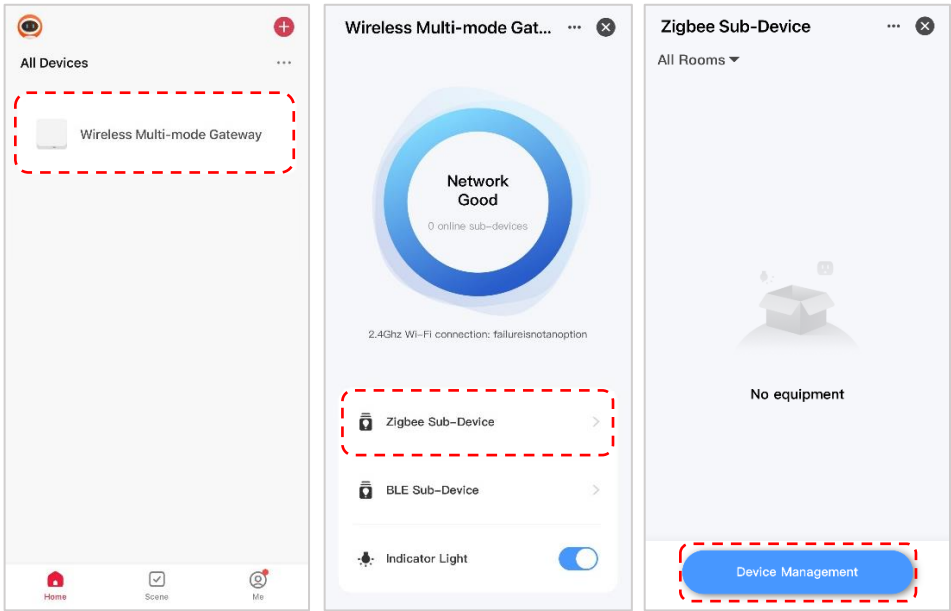
Once connected, you can select Create Scene from the “+” in the upper right corner (or from the Scene tab) to group connected SmarterHome™ products and automate their functions.

Add the Device to the Bluetooth + Zigbee Gateway (Sold Separately)

This device is designed to be paired with the Kogan SmarterHome™ Bluetooth + Zigbee Wireless Gateway (KAGTWYBTZBA).

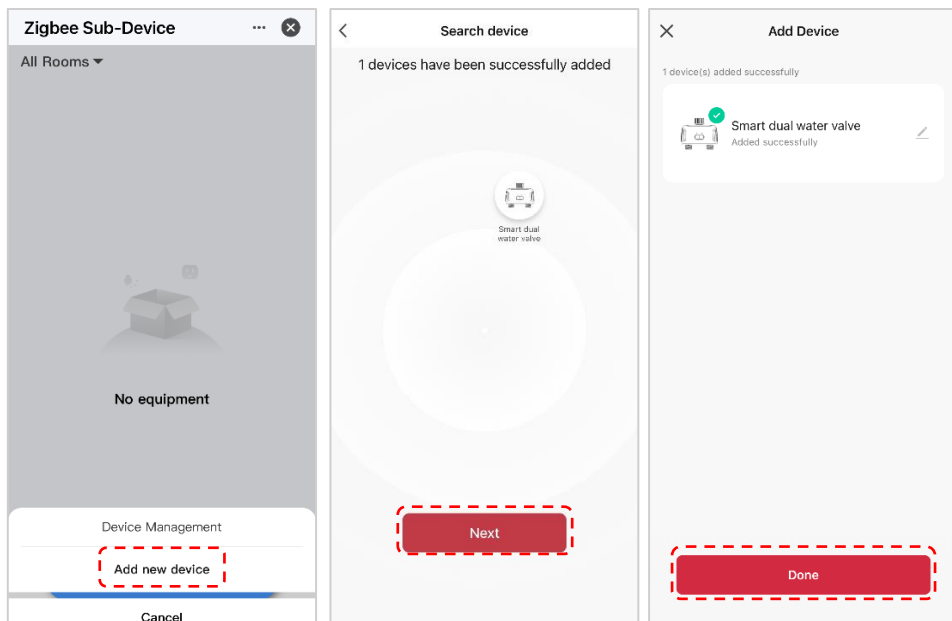
To pair the device and the gateway:

1. Ensure your gateway is paired to the SmarterHome™ app.
2. On the device, press and hold the Power button for 6 seconds until the indicators rapidly flash green.
3. On the SmarterHome™ app, tap ‘Wireless Multi-mode Gateway’.
4. Tap ‘Zigbee Sub-Device’.
5. Tap ‘Device Management’.





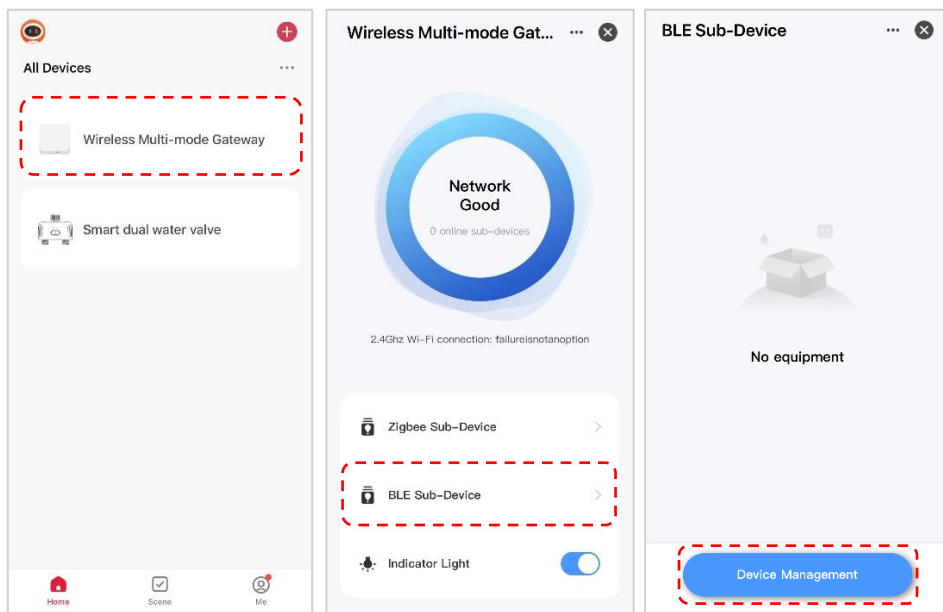
6. Tap 'Add new device'.
7. The app will search for the device. When the device has been successfully added, tap 'Next', and then tap 'Done'.
8. When successfully paired, the indicator on the device will turn solid green.



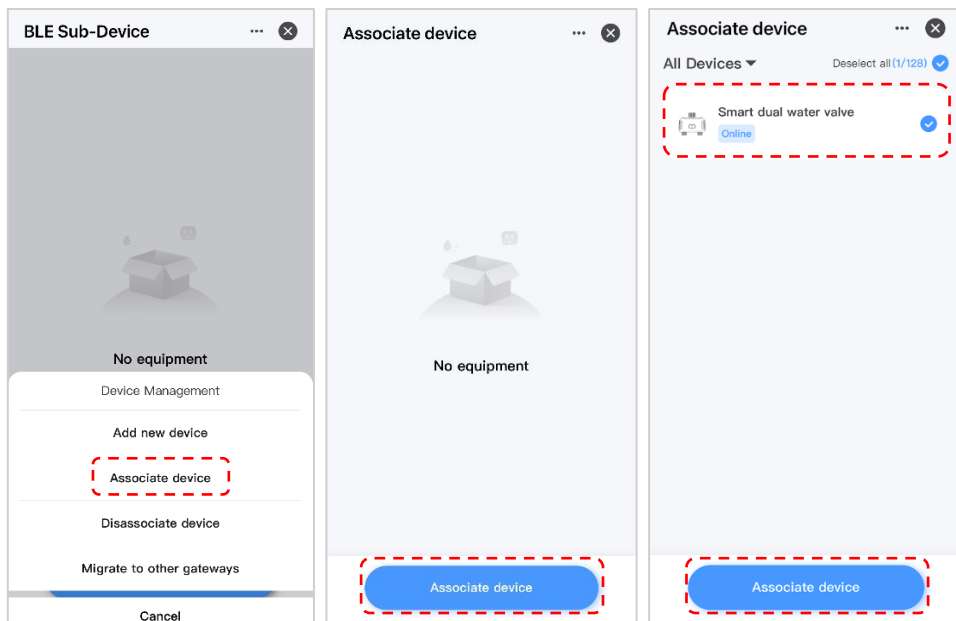
## Transfer the Bluetooth Device to the Bluetooth + Zigbee Gateway (Sold Separately)

If the device has been paired to the SmarterHome app directly through Bluetooth, and you would like to transfer it to the Kogan SmarterHome™ Bluetooth + Zigbee Wireless Gateway (KAGTWYBTZBA), follow the steps below.

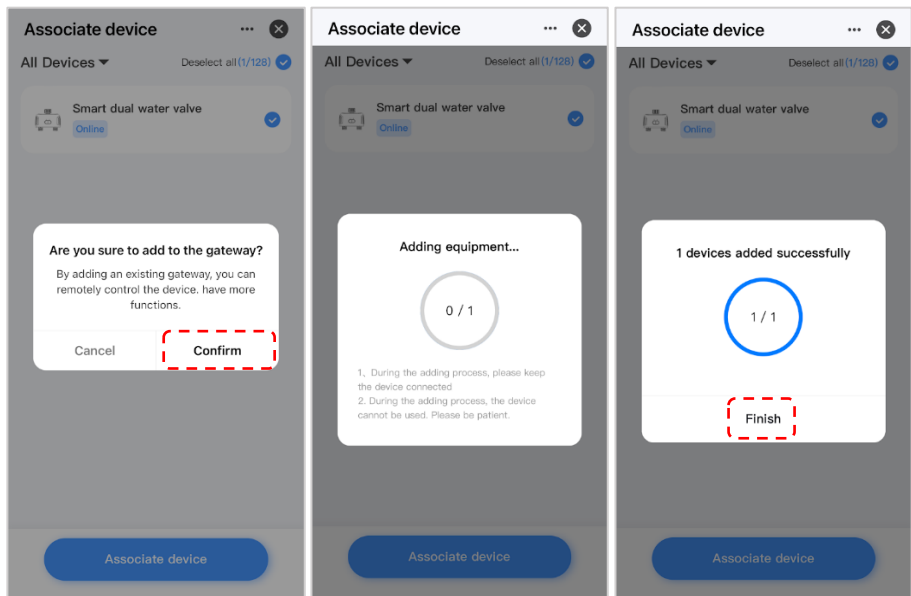
1. Ensure your gateway is paired to the SmarterHome™ app.
2. On the SmarterHome™ app, tap 'Wireless Multi-mode Gateway'.
3. Tap 'BLE Sub-Device'.
4. Tap 'Device Management'.



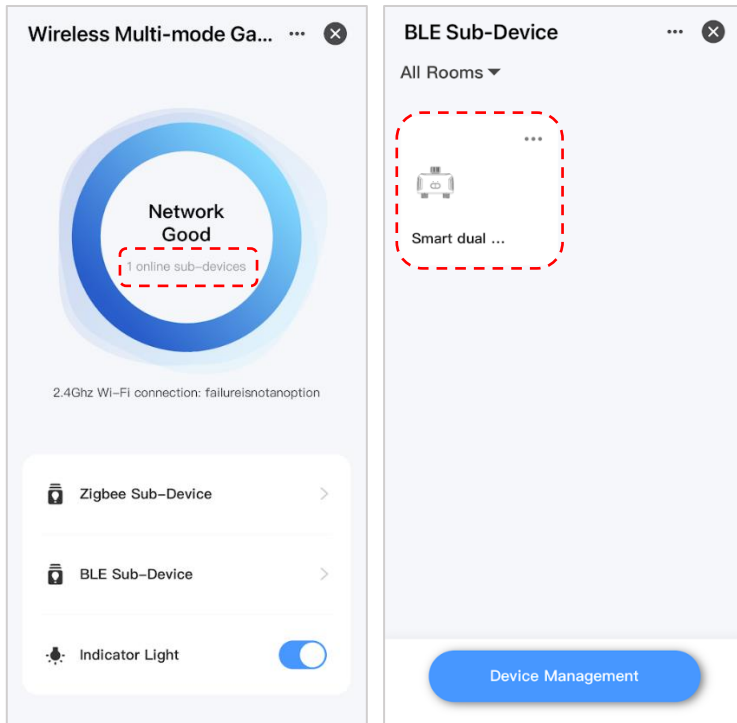
5. Tap 'Associate Device'.
6. Tap 'Associate Device'.
7. Select the device and then tap 'Associate Device'.



- 8. Tap 'Confirm'.
- 9. The device will be added to the gateway. Once the device is successfully added, tap 'Finish'.



10. The device will be added as a BLE Sub-Device.



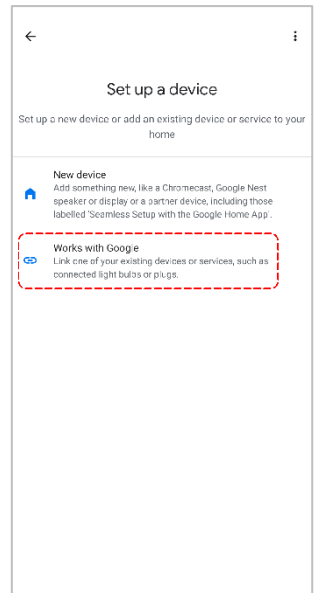
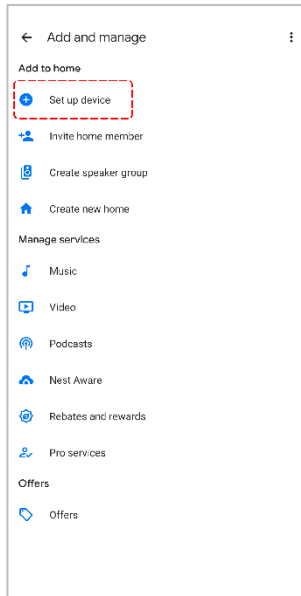
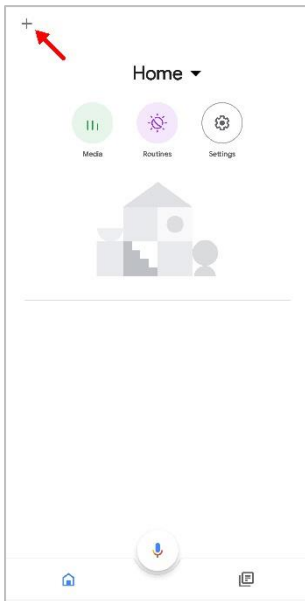
# GOOGLE HOME CONTROL

Note:

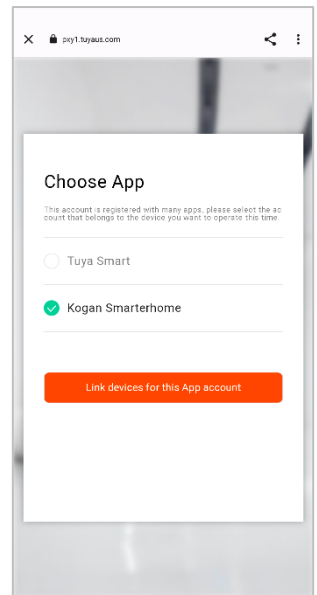
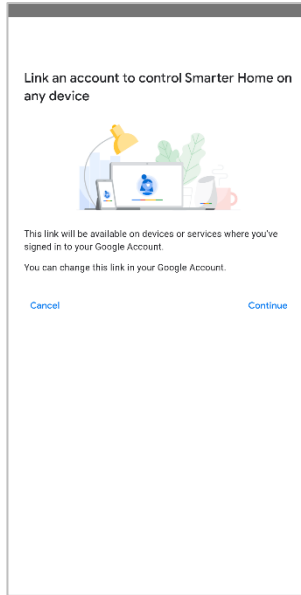
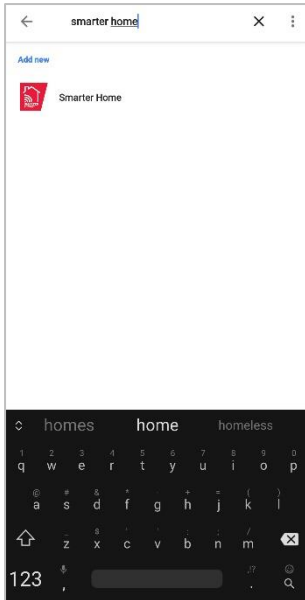
You will need to have set up a Google Home account prior to linking your Kogan SmarterHome™ device.

## Adding “SmarterHome” to the Google Home App

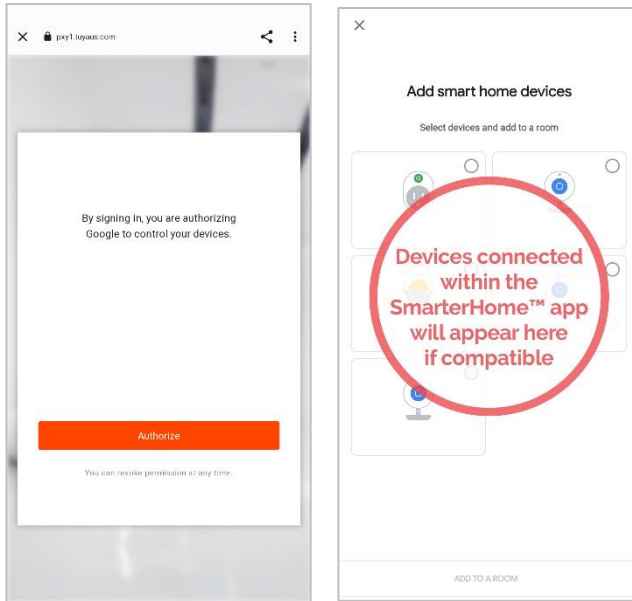
1. From the home page of the Google Home app, select the “+” icon (top left corner, see arrow in the below screenshot) to access the ‘Add and manage’ page.
2. Select ‘Set up device’, then select the ‘Works with Google’ option.



3. Select the search bar and type 'Smarter Home' to locate the Kogan SmarterHome™ service.
4. From here, you will be prompted to sign into your SmarterHome™ account using either your email or mobile phone number, depending on which method you used to register your account.
5. Select "Kogan SmarterHome™" from the app options.



6. Tap 'Authorise' to grant Google permission to access the SmarterHome™ app and your devices.
7. Once connected, the app will display any compatible devices linked to your SmarterHome™ account. From here you can assign them to rooms and set up any routines. Tap on any of the devices to view a list of available commands.



**Note:**

Please note that Google Home can only control the base/core functions of any compatible SmarterHome™ devices. To make full use of this product's smart functionality, please use the Kogan SmarterHome™ app.



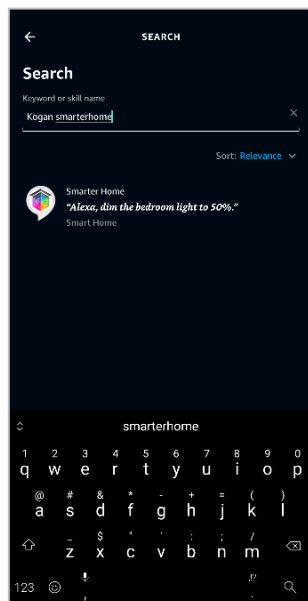
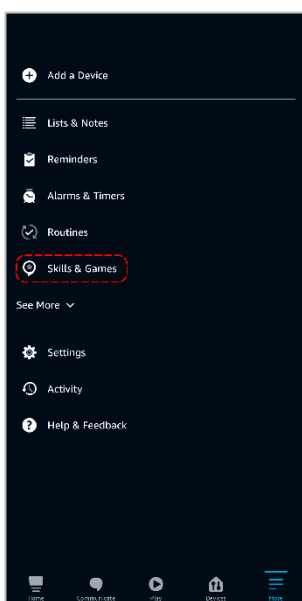
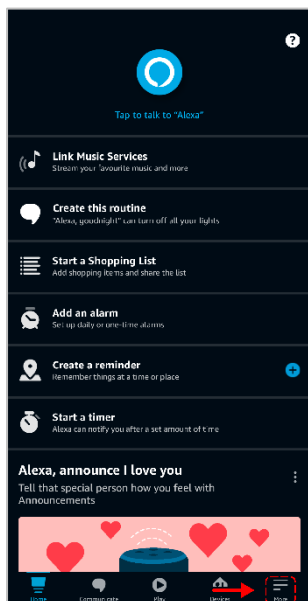
# AMAZON ALEXA CONTROL

## Note:

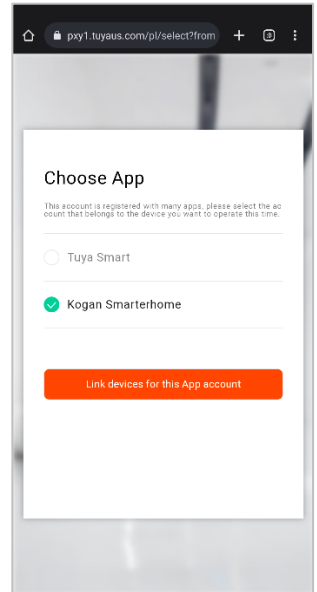
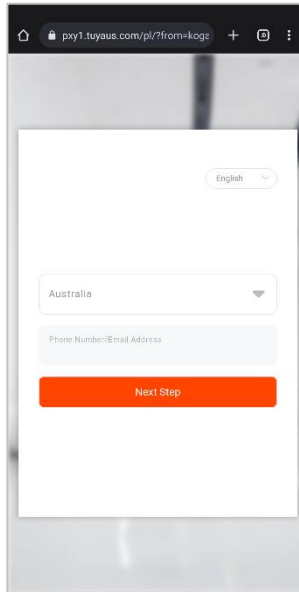
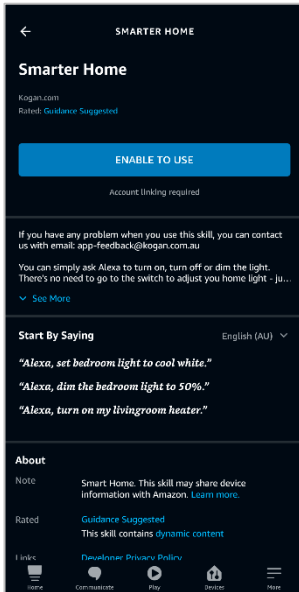
You will need to have set up an Alexa account prior to linking your Kogan SmarterHome™ device.

## Adding “SmarterHome” to the Alexa App

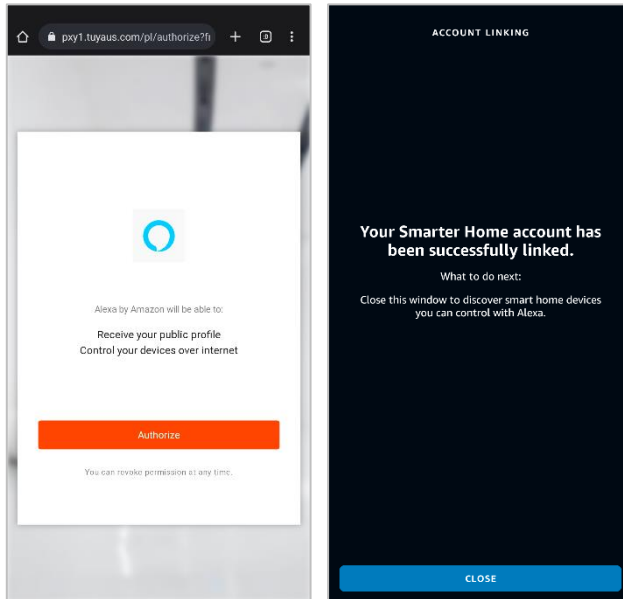
1. From the home page of the Alexa app, select the “≡” icon in the bottom-right and select “Skills & Games” from the sidebar.
2. Select the search bar and type ‘Smarter Home’ to locate the Kogan SmarterHome™ skill.



3. Tap 'Enable to Use' to add the Kogan SmarterHome™ skill to Alexa.
4. From here, you will be prompted to sign into your SmarterHome™ account using either your email or mobile phone number, depending on which method you used to register your account.
5. Select "Kogan SmarterHome™" from the app options.



6. Tap 'Authorise' to grant Alexa permission to access the SmarterHome™ app and your devices.
7. Once connected, the app will perform a search and display the devices linked to your SmarterHome™ account. When your devices have successfully connected to the Alexa app, you will be able to control your Kogan SmarterHome™ devices via Alexa's voice commands.

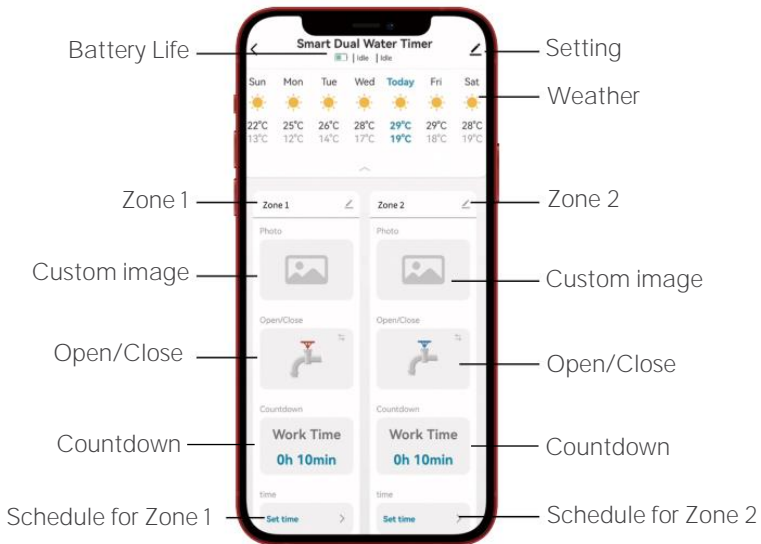


**Note:**

Please note that Alexa can only control the base/core functions of any compatible SmarterHome™ devices. To make full use of this product's smart functionality, please use the Kogan SmarterHome™ app.

# OPERATION

## SmarterHome™ App



### Manual Watering

- Manually water the garden without interrupting the programmed watering schedule.
- Tap 'Open/Close' to activate manual watering.
- Tap 'Countdown' to set a timer for the manual watering cycle. The remaining time will display.

### Stop Watering

Tap 'Open/Close' to stop watering any time during scheduled or manual watering.

### Rain Delay

- The rain delay function allows you to postpone watering for 1-7 days due to rain or when the ground is already wet.
- Tap 'Open/Close' to activate manual watering.
- Tap 'Countdown' to set a timer for the rain delay. The remaining time will display.

# SPECIFICATIONS

Bluetooth Range	15m without interference
Working Water Pressure	7.25 - 116 psi
Working Temperature	4.5°C - 45°C (40.1°F - 113°F)
Rain Delay Time	1-7 days
Waterproof	IPX5
Batteries	x4 AA alkaline batteries

# TROUBLESHOOTING

Problem	Solution
The timer <b>doesn't</b> turn on/off at the pre-set time.	<ul style="list-style-type: none"> <li>• Programming is incorrect.</li> <li>• Water pressure is too low.</li> <li>• Particles of dirt or debris are stuck in the valves.</li> <li>• More than one start time is programmed with overlapping schedules.</li> <li>• Manual watering is on.</li> <li>• The batteries are low.</li> <li>• The faucet is off.</li> <li>• The water timer is connected to a water tank.</li> <li>• The timer is faulty. Contact <a href="https://help.kogan.com">help.kogan.com</a> for support.</li> </ul>
The Bluetooth connection is dropping out.	<ul style="list-style-type: none"> <li>• The timer is in sleep mode. The timer will automatically reconnect after 5-10 seconds. If it does not reconnect, swipe down to refresh the home page of the app or turn your <b>device's</b> Bluetooth off and on again.</li> <li>• The timer is paired to another app. Unpair the timer from the other app and pair it with your device.</li> <li>• Ensure the device battery is charged and place the device as close to the timer as possible.</li> <li>• Pair the water timer to the <b>Kogan SmarterHome™ Bluetooth + Zigbee Wireless Gateway (KAGTWYBTZBA)</b> (sold separately) to ensure you can always connect to the water timer.</li> </ul>

## NOTES

[illegible]

Need more information?

We hope that this user guide has given you  
the assistance needed for a simple set-up.

For the most up-to-date guide for your product,  
as well as any additional assistance you may require,  
head online to **help.kogan.com**

kogan.com