



# GODIAG GT112 K-Line FOR VW Skoda Seat 2nd & 3rd Generation Dashboard IMMO Key Matching Test Platform Cable



User Manual  
202501

# Product Overview

GODIAG GT112 K-Line for VW Skoda Seat 2nd & 3rd generation dashboard IMMO key matching test platform cable performs offline key and IMMO instrument synchronization test, intelligent IMMO system emergency start area sensing detection, IMMO dashboard offline diagnosis, instrument IMMO data reading and writing, instrument mileage repair, key matching... It supports VW Skoda Seat and other models.

It can be used with devices like HEX V2, VAGCOM VCDS 5053, VAS5054A, VAS6154, SUPER VAG K+CAN, Obdstar, Lonsdor, AVDI, ZEDFULL, VVDI2, Key Tool Plus, X300 DP Plus, Lonsdor, SUPER VAG, AUTEL, etc.

## Functions:

1. Offline connection to the dashboard to convert to standard OBD2.
2. Perform key chip and instrument synchronization test.
3. Independent ignition switch
4. Key induction adapter with light

## Steps to Match VW Golf IV1999 VDO-93C86 Key

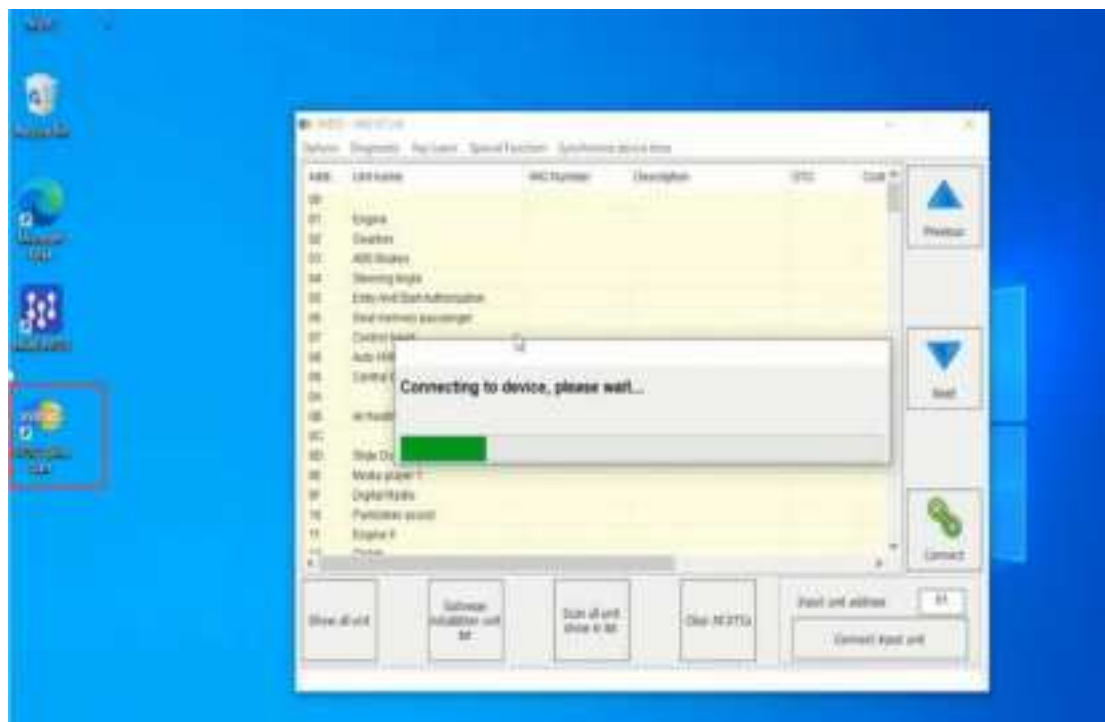
Step 1: Connect GT112, VVDI2, instrument panel and laptop as shown in the figure.



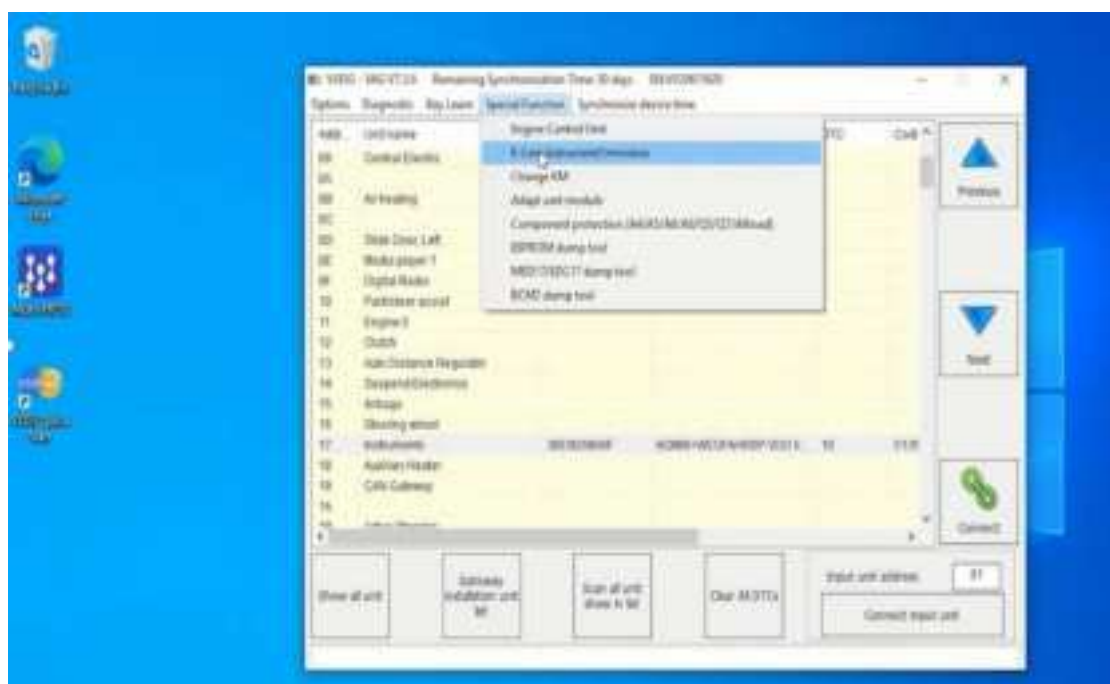


If the IMMO light on the instrument flashes, it means that the instrument has not recognized the key. If the induction adapter flashes for three seconds and then turns off, it also means that the key has not been recognized or the key chip does not match.

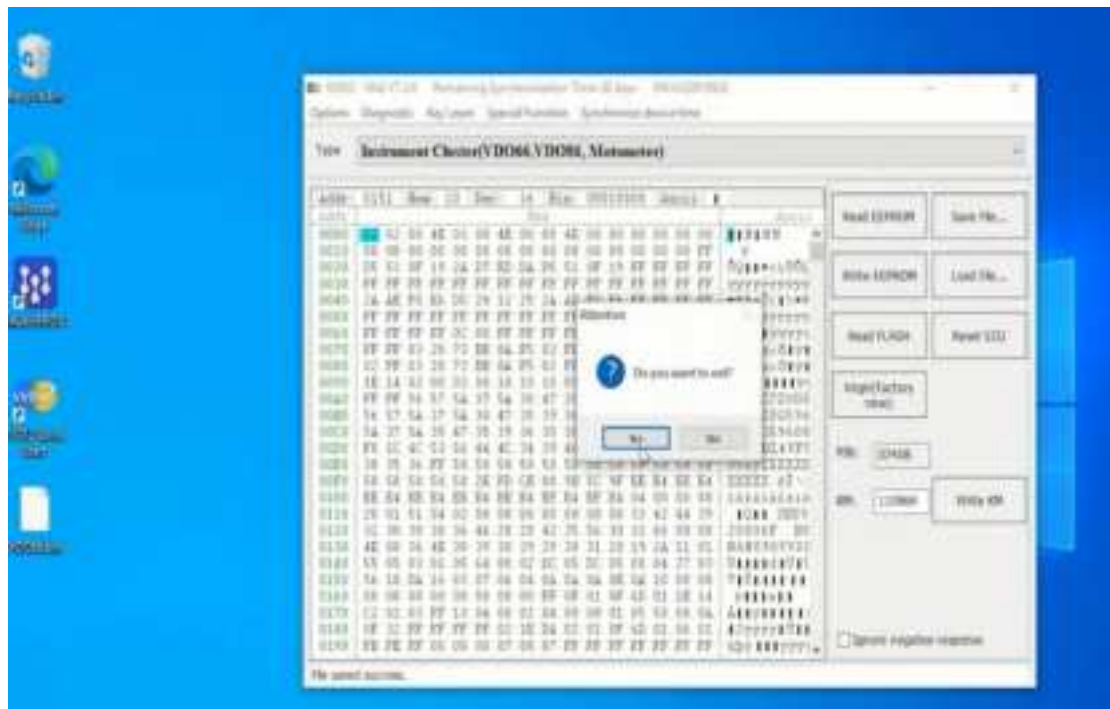
Step 2: Open vvd2 software.



Step 3: Select "VW" >> "K-Line Instrument/Immobox" >> "Instrument Cluster(VDO66, VDO86, Motometer)" >> "Read EEPROM" >> "Save File".







Step 5: Select “Transponder Programmer”

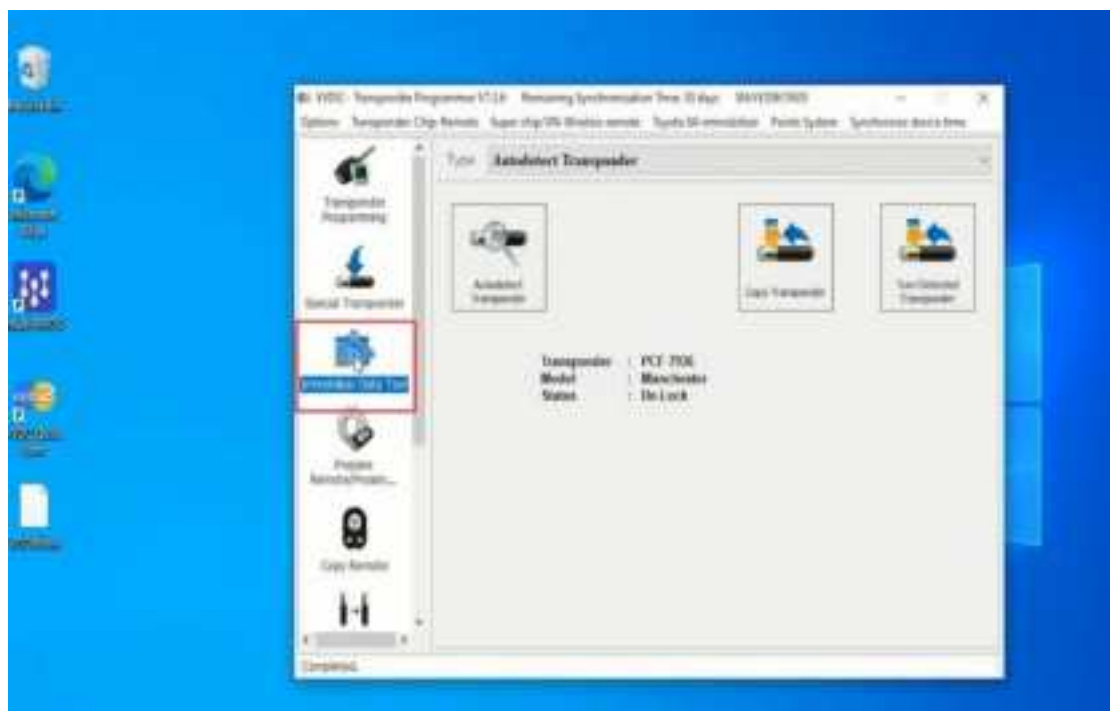


Step 6: Then follow the prompts to insert Xhorse VVDI super chip.  
Note: If the chip has been used, you need to erase it first.

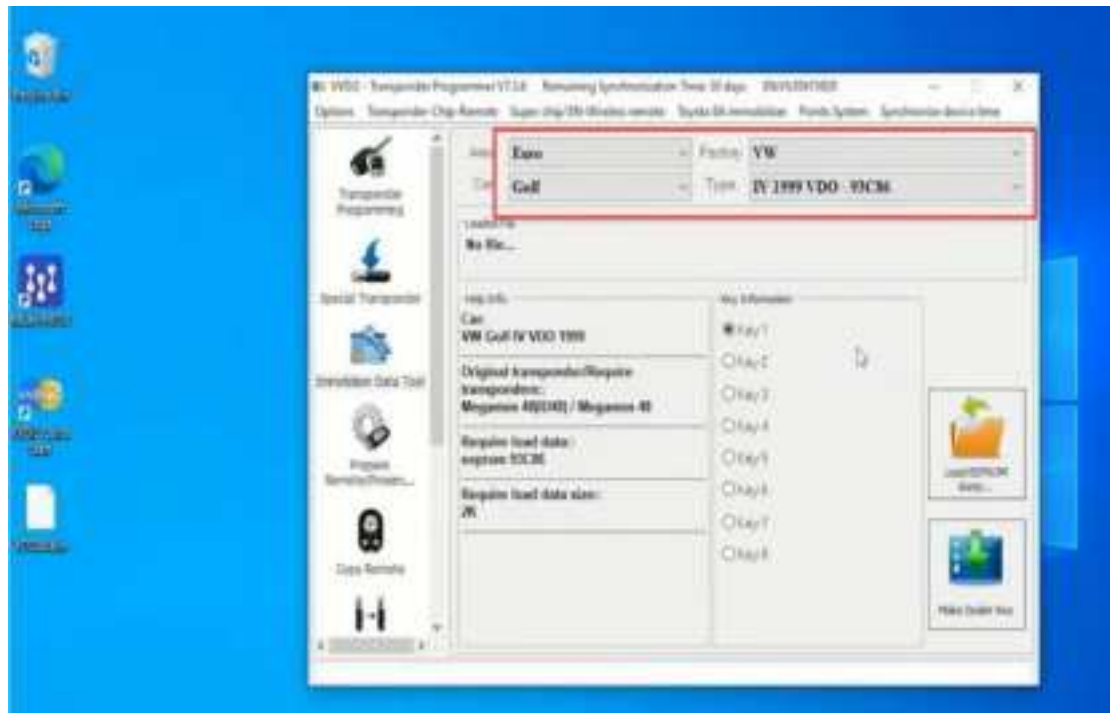




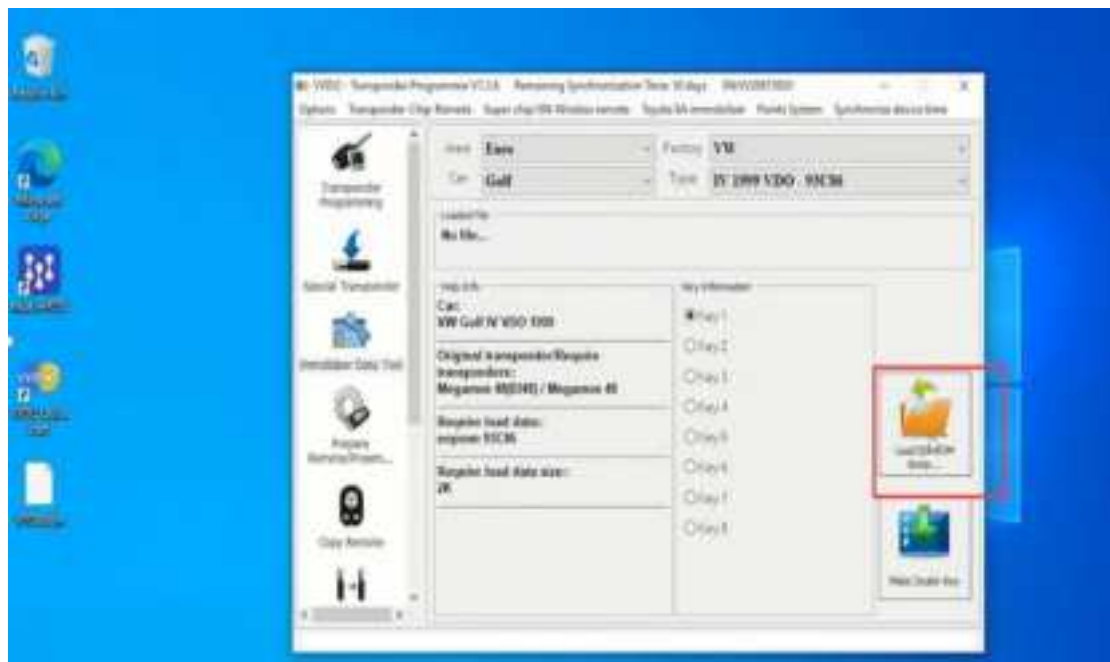
Step 7: Select "Immobilizer Data Tool".



Step 8: Select the model as shown (Euro/ VW/ Golf/ IV1999 VDO-93C86).



Step 9: Select "Load EEPROM dump".

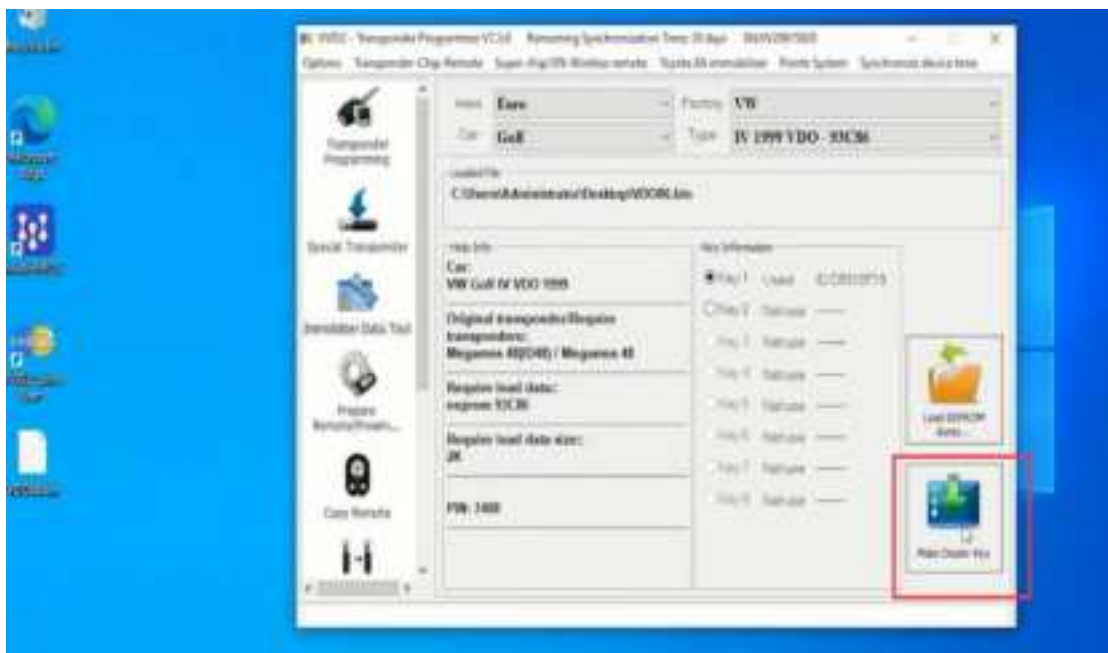


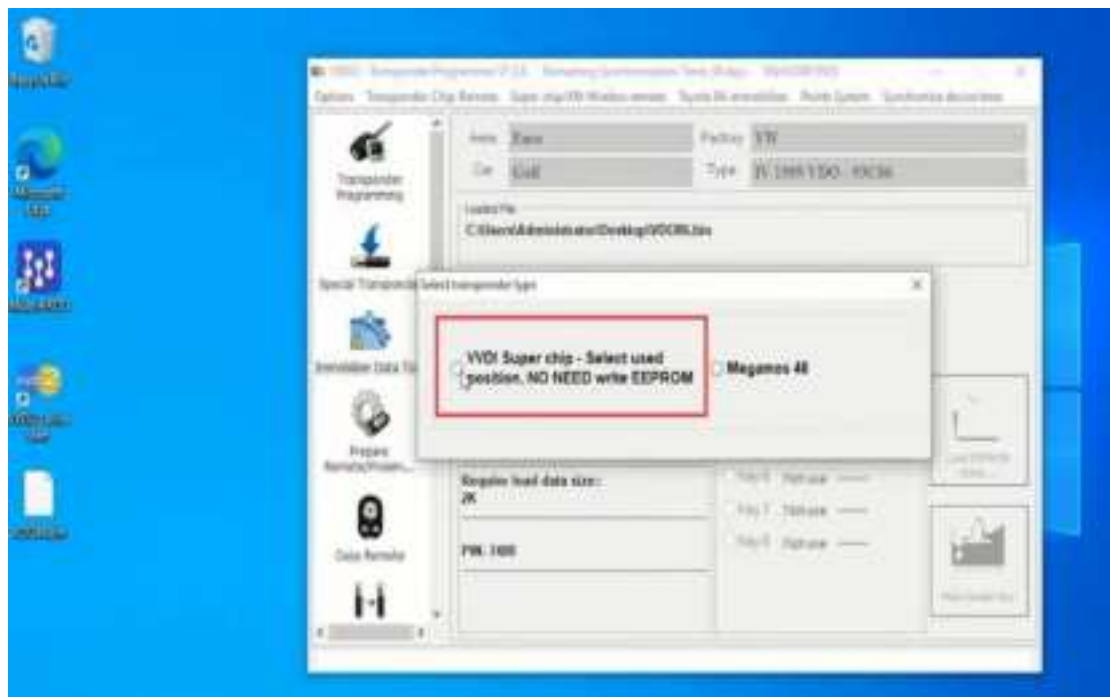
Step 10: Then select the VDO86 eeprom file you just saved





Step 11: Select "Make Dealer Key">>"VVDI Super chip-Select used position. NO NEED write EEPROM".





Step 12: The key matching is successful.



Test the newly generated chip.

Step 13: Put the chip into the induction adapter.



After pressing the ignition switch, you can see the light on the induction adapter flash quickly and then go out immediately, and the IMMO flash quickly and then go out immediately. This means that the chip is matched successfully.



## Intelligent IMMO System Emergency Start Area Induction Detection

Press the vehicle's start switch and bring the device's key identifier close to a certain area. If the key identifier light flashes or lights up, it means that the area is the vehicle's key emergency start sensing area. If the customer's smart key is out of power, just put the dead smart key in the key emergency start sensing area to start the vehicle.

## Car IMMO Start and Start Key Chip Detection

### Test Result Analysis:

1. The light of the key identifier flashes and then goes out, indicating that the IMMO chip and the chip key are working properly.
2. The light of the key identifier flashes for a long time, indicating that the chip key and the vehicle's IMMO system do not match, and the chip key needs to be re-matched.
3. The light of the key identifier does not flash, which means that the vehicle's IMMO system is faulty. Please check the vehicle's IMMO system.

## Accessories:

1pc x GODIAG GT112 K-Line FOR VW Skoda IMMO Key Matching Test Platform Cable

1pc x PDF manual



Shenzhen Sinoy Technology Co.,Ltd

All Rights Reserved

[www.godiag.com](http://www.godiag.com)

+86 18813687743

[Sales@GoDiag.com](mailto:Sales@GoDiag.com)



Thanks for reading!