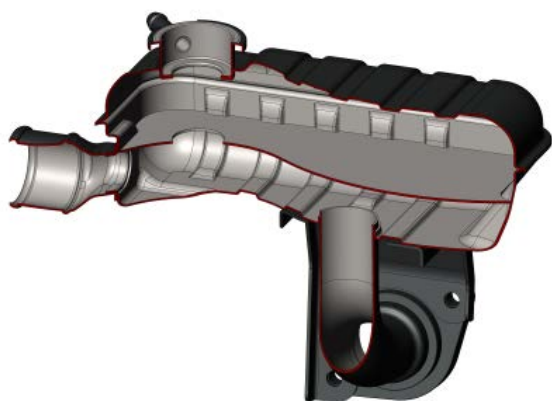


FORD COBRA EXPANSION TANK

A02-100

INSTALLATION INSTRUCTIONS



Thankyou for purchasing an OE Spec + stainless steel expansion tank and adaptor for your Ford Windsor engine. We believe that this tank is the finest on the market.

Re-engineered to visually replicate the original Ford FE brass expansion tanks fitted to Ford FE engines in the 1960's whilst using modern manufacturing methods to far exceed the quality and longevity of the original tanks.

Please read the instructions below carefully to ensure you get the best from your new OE Spec + tank

Each tank has been carefully packaged and is shipped with a number of accessories. Your tank will include a 13psi radiator cap, gasket and bolts. Each tank is tested prior to packaging. Included with your tank is a billet aluminium adaptor block, and an adaptor to manifold gasket.

If you have purchased a finished tank, then your new tank has been powdercoated to provide excellent longevity. Please note that occasional blemishes in the powdercoating are normal and not considered a defect. Whilst powdercoating is one of the strongest finishes available, over time any finish can deteriorate and maintenance work will be needed.

Where you have purchased an unfinished tank, then these are taken direct from the production line with no finishing preparation. These tanks are ideal either for polishing, or prefinishing to your chosen colour. Unfinished tanks are shipped with a 3/8 barbed weld on stainless steel spigot. These can be welded to the tank at any location to match period tanks where a burp connection to the radiator was often present.

First bolt your adaptor to your intake manifold using the gasket provided. You should use Allen/Socket Cap bolts and ensure that these sit below the adaptor surface. The adaptor reroutes the thermostat bypass hose to create clearance for the tank, you may need to replace the hose to reconnect it.

Your tank is designed to bolt directly to your adaptor. The tank flange features a recess to take a standard 2.5"/63mm thermostat. Bolts are supplied along with a gasket to allow the tank to bolt to the intake manifold. Use of a gasket sealer is down to the installer, although will not be necessary in most cases.

Prior to installation please check clearance to your distributor. Where you have a vacuum advance distributor, it may be desirable to reset the distributor to cam engagement to ensure the vacuum advance canister has room for you to adjust the timing adequately.

Each tank has a stainless baffle plate as per the originals welded in place. This also serves as a fill level indicator. Fill until coolant is level with the baffle plate when cold.

