

# SENA



## IMPULSE

MOTORCYCLE BLUETOOTH HELMET WITH MESH INTERCOM™

SOUND BY

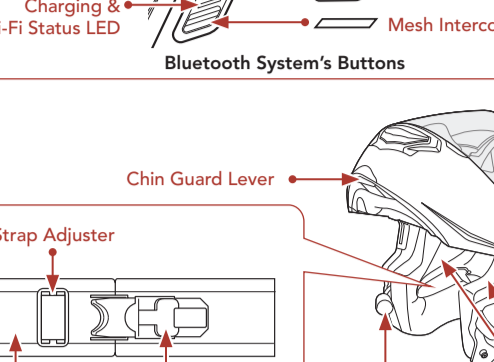
harman / kardon

### QUICK START GUIDE

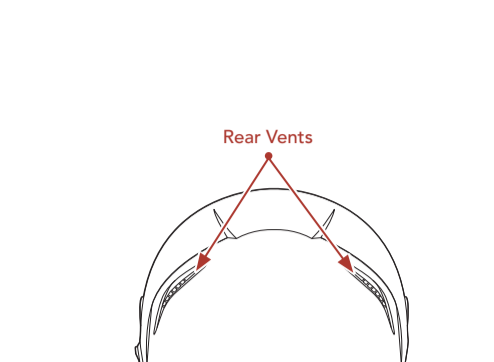
ENGLISH / 1.2.0

#### Downloadable Sena Software

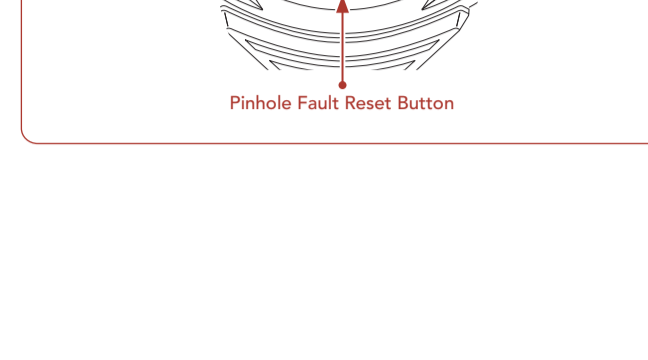
Download the **SENA MOTORCYCLES App** on **Google Play Store** or **App Store**.



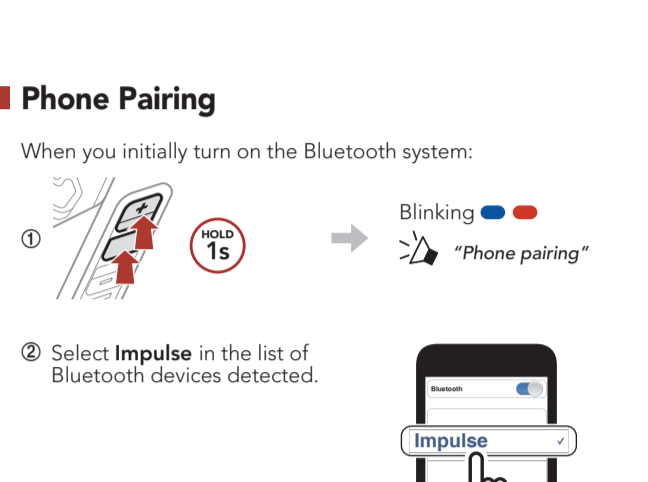
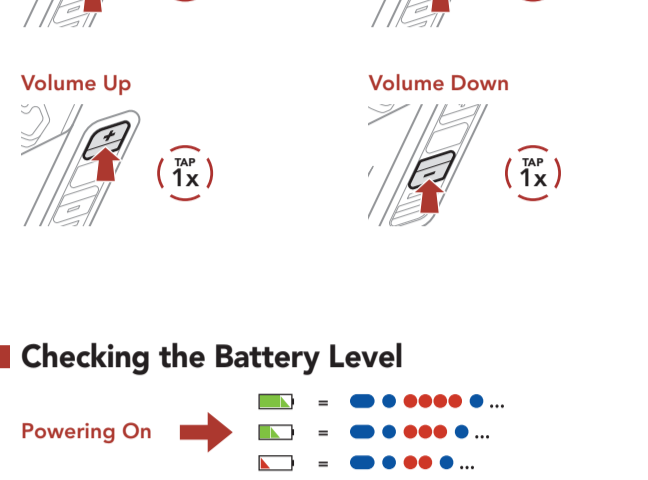
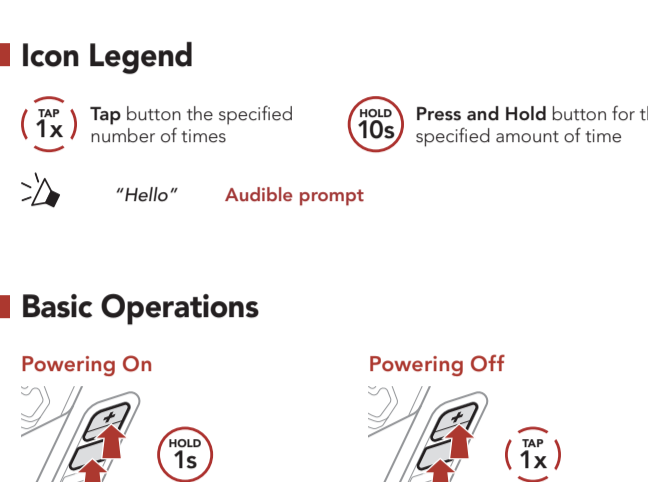
Download the following items at [sena.com](http://sena.com) or on the **SENA MOTORCYCLES App**.



Follow us on Facebook, YouTube, Twitter and Instagram to check the latest information and helpful tips.



#### Product Details



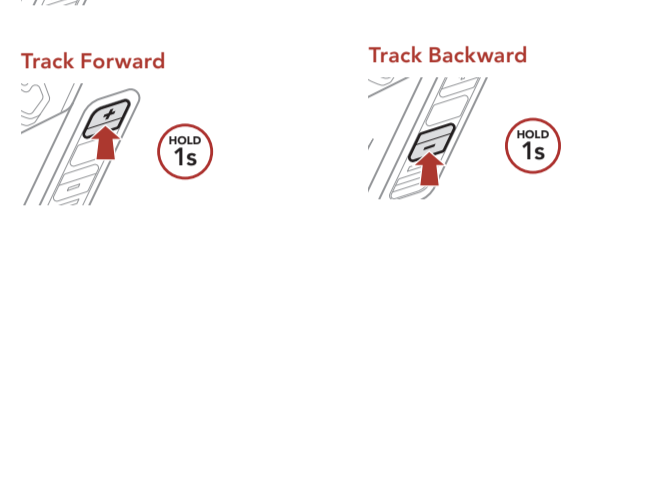
#### Putting on the Helmet

- 1 Unfasten the chinstrap by using the retention system.
- 2 Expand the helmet opening with your hand, and slide your head into the helmet.
- 3 Fasten the chinstrap as tight as possible without causing you pain.

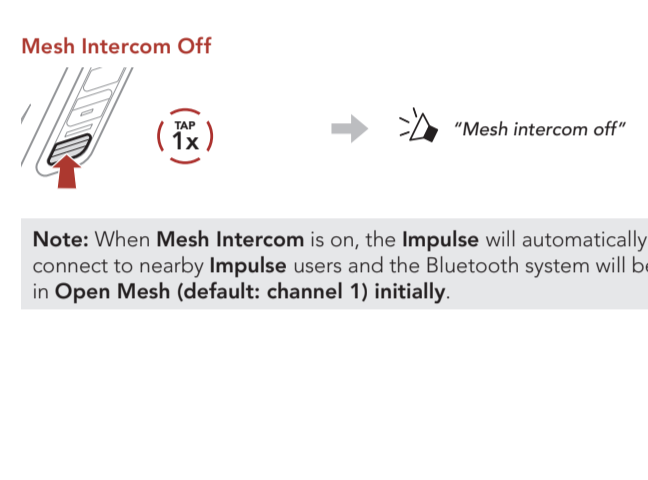
#### Icon Legend

- 1x Tap button the specified number of times
- 10s Press and Hold button for the specified amount of time
- "Hello" Audible prompt

#### Basic Operations



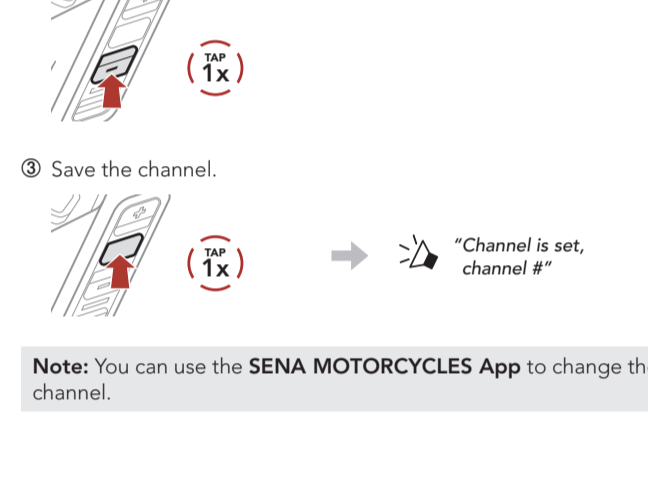
#### Checking the Battery Level



#### Phone Pairing

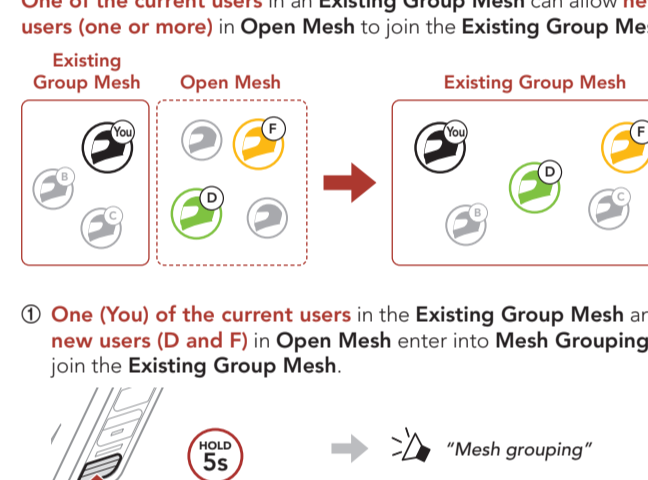
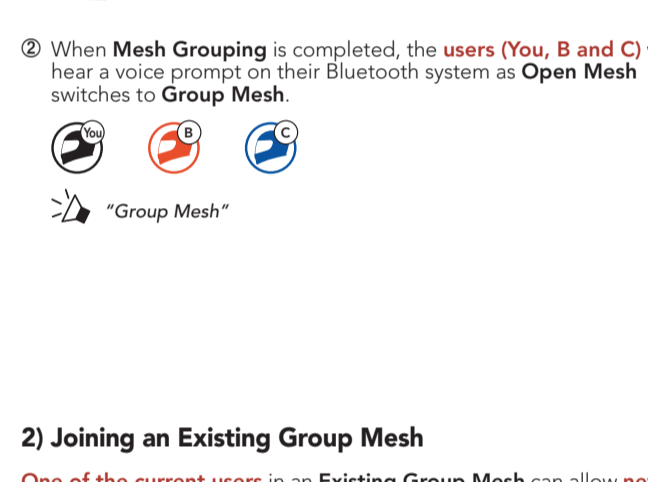
When you initially turn on the Bluetooth system:

- 1 Tap (+) button 1x. Blinking blue LED. Audible prompt: "Phone pairing".
- 2 Select **Impulse** in the list of Bluetooth devices detected.



- Note:**
- The phone pairing mode lasts for **3 minutes**.
  - To cancel phone pairing, tap the **Center Button**.
- For more information on phone pairing, refer to the User's Guide.

#### Using the Phone

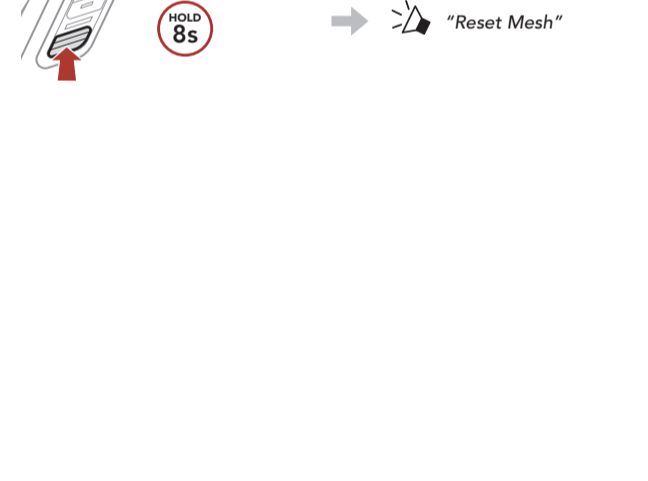


#### Siri and Google Assistant

Activate the **Siri** or **Google Assistant** Installed on Your Phone

"Hey Google" or "Hey Siri" or Tap (+) button 3s in stand-by mode

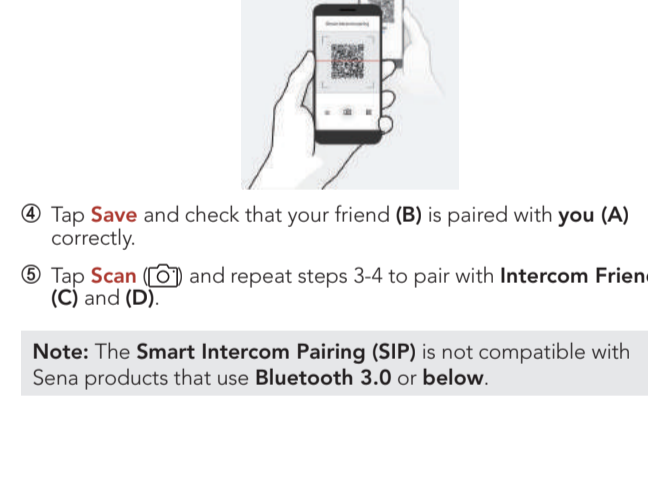
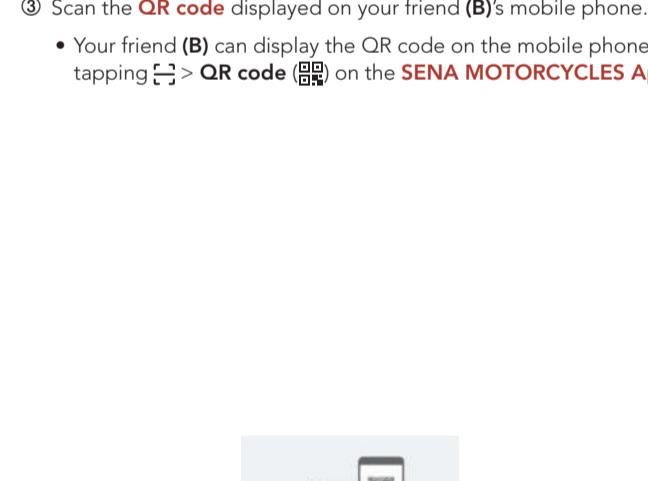
#### Music Control



#### Mesh Intercom™

**Open Mesh™**: communication within the same channel.  
**Group Mesh™**: communication within the same private group.

For more information on **Mesh Intercom**, refer to the User's Guide.

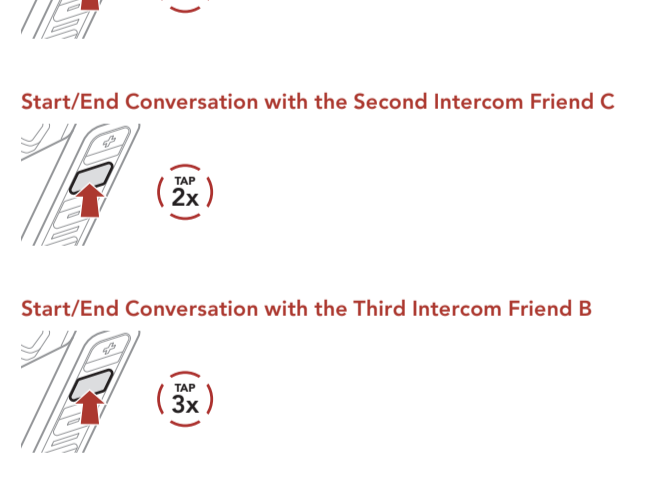
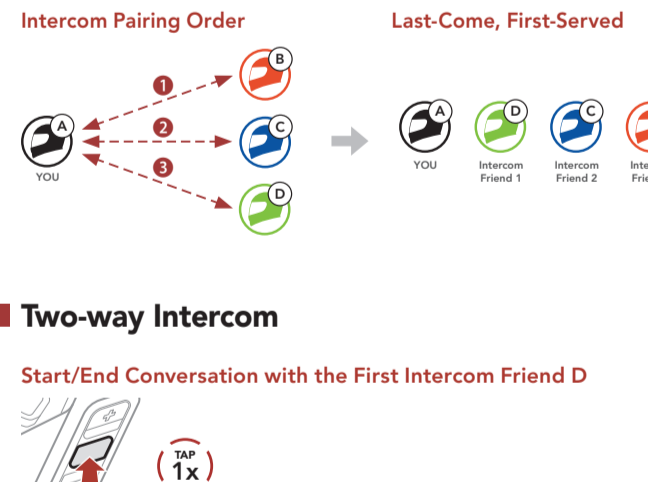


**Note:** When **Mesh Intercom** is on, the **Impulse** will automatically connect to nearby **Impulse** users and the Bluetooth system will be in **Open Mesh** (default: channel 1) initially.

#### Open Mesh

**Channel Setting (Default: channel 1) in Open Mesh**

- 1 Enter into the **Channel Setting**. Tap (+) button 2x. Audible prompt: "Channel setting, 1".
- 2 Navigate between channels. (1 → 2 → ... → 8 → 9 → Exit → 1 → ...)



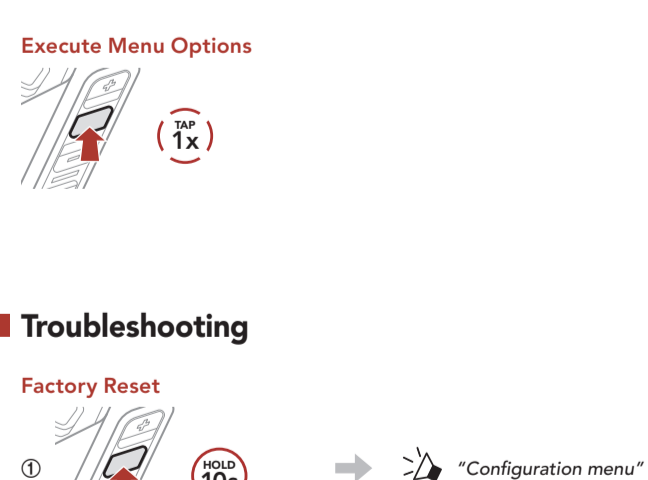
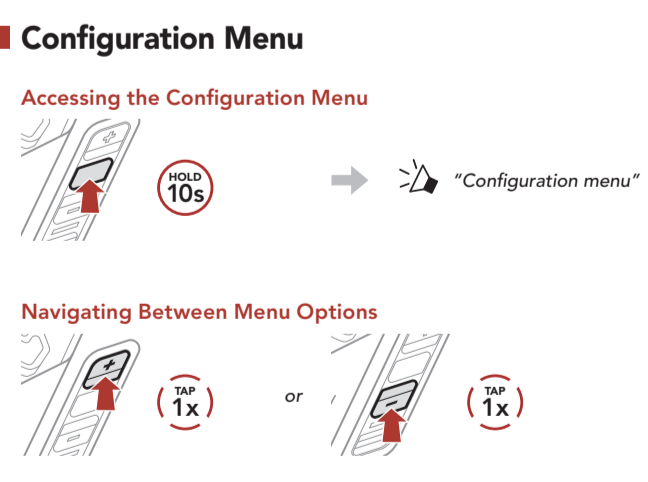
**Note:** You can use the **SENA MOTORCYCLES App** to change the channel.

#### Group Mesh

**Group Mesh** is a closed group intercom function that allows users to join, leave, or rejoin a group intercom conversation without pairing each Bluetooth system.

**1) Creating a Group Mesh**

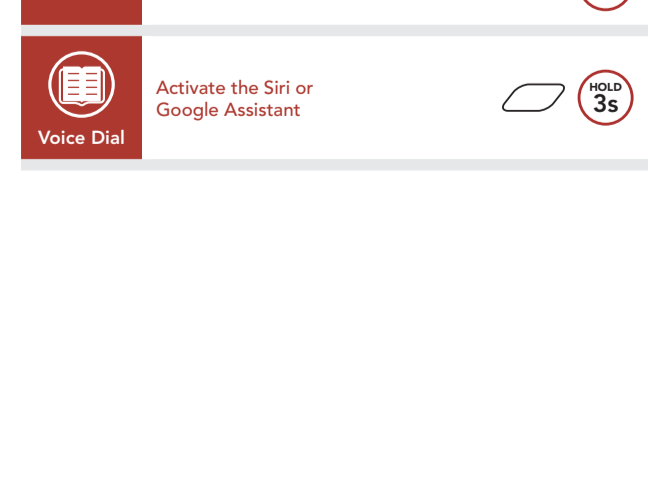
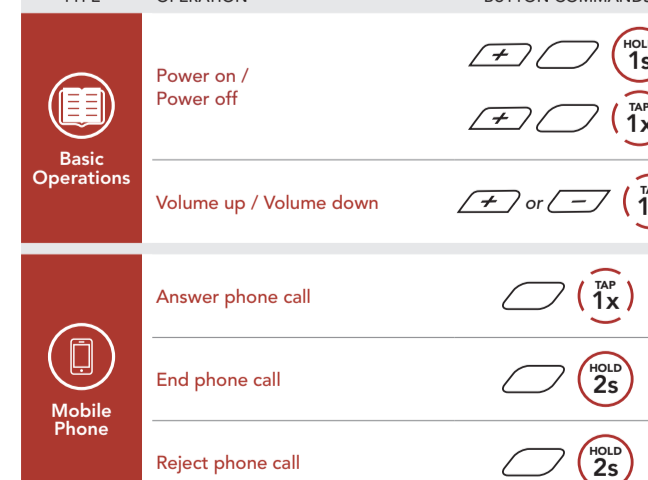
Creating a **Group Mesh** requires **two or more Open Mesh** users.



When **Mesh Grouping** is completed, the users (**You, B and C**) will hear a voice prompt on their Bluetooth system as **Open Mesh** switches to **Group Mesh**.

**2) Joining an Existing Group Mesh**

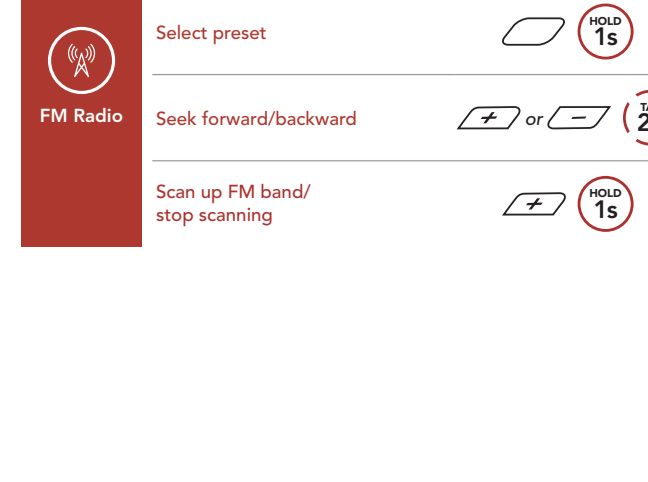
**One of the current users in an Existing Group Mesh** can allow **new users (one or more) in Open Mesh** to join the **Existing Group Mesh**.



When **Mesh Grouping** is completed, the **new users (D and F)** will hear a voice prompt on their Bluetooth system as **Open Mesh** switches to **Group Mesh**.

#### Enable/Disable Mic (Default: Enable)

Users can enable/disable the microphone when communicating in a **Mesh Intercom**.



#### Reset Mesh

If a Bluetooth system in an **Open Mesh** or **Group Mesh** resets the **Mesh**, it will automatically return to **Open Mesh** (default: channel 1).



#### Bluetooth Intercom

Up to three other people can be paired with the Bluetooth system for Bluetooth intercom conversations.



**Intercom Pairing**

There are two ways to pair the Bluetooth system.

**Using the Smart Intercom Pairing (SIP)**

SIP allows you to quickly pair with your friends for intercom communication by scanning the QR code on the **SENA MOTORCYCLES App** without remembering the button operation.

- 1 Pair the **Bluetooth** system with the Bluetooth system.
- 2 Open the **SENA MOTORCYCLES App** and tap **Smart Intercom Pairing Menu**.
- 3 Scan the **QR code** displayed on your friend (B)'s mobile phone.
  - Your friend (B) can display the QR code on the mobile phone by tapping **QR code** on the **SENA MOTORCYCLES App**.



- 4 Tap **Save** and check that your friend (B) is paired with you (A) correctly.
- 5 Tap **Scan** (D) and repeat steps 3-4 to pair with **Intercom Friends** (C) and (D).

**Note:** The **Smart Intercom Pairing (SIP)** is not compatible with Sena products that use **Bluetooth 3.0 or below**.

#### Using the Button



#### Last-Come, First-Served

If a Bluetooth system has multiple paired Bluetooth systems for intercom conversations, the last paired Bluetooth system is set as the **First Intercom Friend**.



#### Two-way Intercom

**Start/End Conversation with the First Intercom Friend D**



**Start/End Conversation with the Second Intercom Friend C**



**Start/End Conversation with the Third Intercom Friend B**



#### FM Radio



**Note:** You can also save the current station from the **SENA MOTORCYCLES App**.

#### LED Taillight

You can control the LED taillight through the **SENA MOTORCYCLES App**.

- Mode: Solid / Night Flash / Day Flash / Off



#### Configuration Menu

**Accessing the Configuration Menu**



**Navigating Between Menu Options**



**Execute Menu Options**



#### Troubleshooting

**Factory Reset**



**Fault Reset**



**Note:** **Fault Reset** will not restore the Bluetooth system to the factory default settings.

#### Quick Reference

TYPE	OPERATION	BUTTON COMMANDS
Basic Operations	Power on / Power off	[+] (1s) / [-] (1s)
	Volume up / Volume down	[+] or [-] (1x)
	Answer phone call	[+] (1x)
Mobile Phone	End phone call	[+] (2s)
	Reject phone call	[+] (2s)
Voice Dial	Activate the Siri or Google Assistant	[+] (3s)
Mesh Intercom™	Mesh Intercom on/off	[+] (1x)
	Channel setting	[+] (2x)
	Mesh Grouping	[+] (5s)
	Reset Mesh	[+] (8s)
Intercom	Enable/Disable Mic	[+] (1s)
	Intercom pairing	[+] (5s)
Music	Start/End intercom	[+] (1x)
	Play/Pause music	[+] (1s)
	Track forward	[+] (1s)
	Track backward	[-] (1s)

TYPE	OPERATION	BUTTON COMMANDS
FM Radio	FM radio on/off	[+] (1s)
	Select preset	[+] (1s)
	Seek forward/backward	[+] or [-] (2x)
	Scan up FM band/ stop scanning	[+] (1s)