

# Infinity<sup>®</sup>X1

8487-IF5000

## DUAL-CORE FLASHLIGHT WITH HYBRID POWER

RECHARGEABLE

5000  
LUMENS

### INSTRUCTIONS



To meet our commitment in reducing the impact our packaging has on the planet, we use sustainable packaging. This manual is able to dissolve in water and return to its natural state with zero impact to the environment. This QR Code can be used to access this manual and additional

information about this product and our company.



**IMPORTANT, RETAIN FOR  
FUTURE REFERENCE: READ CAREFULLY**

RECHARGEABLE BATTERY				
FL1 STANDARD	HIGH	MEDIUM	LOW	
	5000 LUMENS	2000 LUMENS	800 LUMENS	1m
	2h	4h	8h	
	180 m	80 m	60 m	IPX4
	8100cd	1600cd	900cd	

# Infinity<sup>®</sup>X1

SMARTER INSIDE. BRIGHTER OUTSIDE.

#### MANUFACTURER

©2021 INFINITY X1 LLC<sup>®</sup>

3525 Del Mar Heights Rd, Suite 867

San Diego, CA 92130, USA

www.infinityx1.com

#### CUSTOMER SERVICE

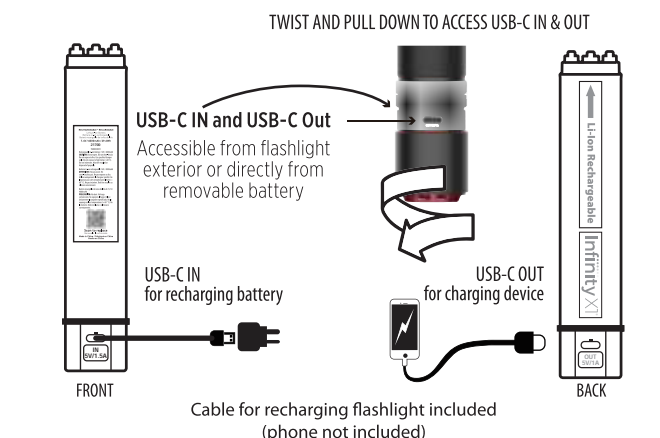
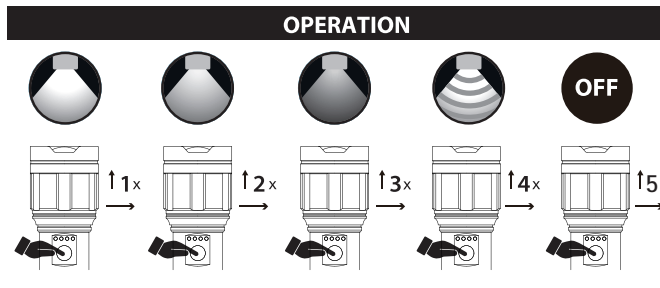
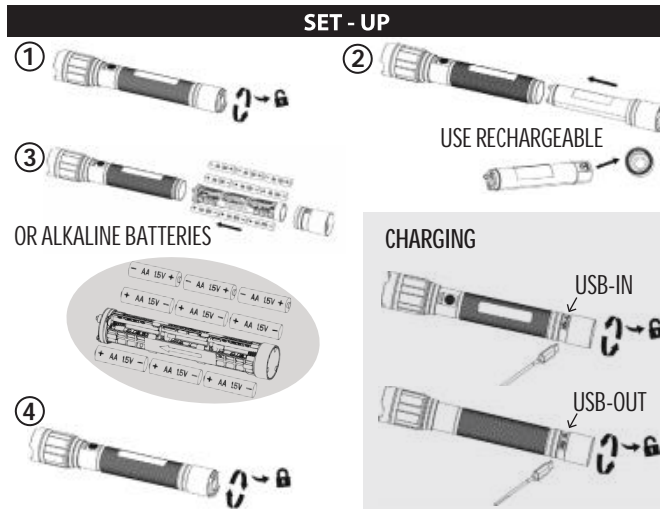
USA: 1-866-544-4891

International: 1-760-230-5611

Hours: M-F 9AM to 5PM Pacific Time

Web: www.infinityx1.com/support

Email: support@infinityx1.com



**CAUTION:** Possible hazardous optical radiation emitted from this product. The luminaire should be positioned so that prolonged staring into the luminaire at a distance closer than 1.5 m / 4.9 ft / 4.9 pi is not expected. CAUTION - HOT SURFACE. This flashlight may get hot. DO NOT COVER OR TOUCH flashlight lens if hot.



### CAUTION

CAUTION: Keep batteries away from children. If swallowed consult a physician at once. Alkaline batteries may explode or leak, and cause burn injury, if recharged, disposed of in fire, mixed with a different battery type, inserted backwards or disassembled. Do not recharge alkaline batteries. Replace all used batteries at the same time. Do not carry batteries loose in your pocket or purse. Do not remove the battery label.

### NOTE

WARNING: Changes or modifications not approved by the party responsible for compliance could void user's authority to operate the equipment. This equipment has been tested and found to comply with the limits for a Class B digital device, pursuant to Part 15 of the FCC Rules. These limits are designed to provide reasonable protection against harmful interference in a residential installation. This equipment generates, uses and can radiate radio frequency energy and, if not installed and used in accordance with the instructions, may cause harmful interference to radio communications. However, there is no guarantee that interference will not occur in a particular installation. If this equipment does cause harmful interference to radio or television reception, which can be determined by turning the equipment off and on, the user is encouraged to try to correct the interference by one or more of the following measures:

- Reorient or relocate the receiving antenna.
- Increase the separation between the equipment and receiver.
- Connect the equipment into an outlet on a circuit different from that to which the receiver is connected.
- Consult the dealer or an experienced radio/TV technician for help.

#### FCC STATEMENT OF COMPLIANCE

Note: This device complies with Part 15 of the FCC Rules. Operation is subject to the following two conditions: (1) This device may not cause harmful interference, and (2) This device must accept any interference received, including interference that may cause undesired operation. CAN ICES-005 (B) / NMB-005 (B). This Class B digital apparatus complies with Canadian ICES-005.

### CAUTION

Always purchase the correct size and grade of battery most suitable for the intended use.

Always replace the whole set of batteries at one time, taking care not to mix old and new ones, or batteries of different types. Clean the battery contacts and also those of the device prior to battery installation. Ensure the batteries are installed

correctly with regard to polarity (+ and -). Remove batteries from product during periods of non-use. Battery leakage can cause corrosion and damage to this product. Remove used batteries promptly. Keep contacts clean, both on the battery and in the appliance. Please dispose of batteries according to local regulations for the battery chemistry. Working Temperature: -20 °C to 54 °C / -4 °F to 129.2 °F.

Compatible with alkaline batteries and rechargeable batteries.

DO NOT mix and use alkaline batteries with rechargeable batteries together.

Keep batteries away from children.

Made in China

