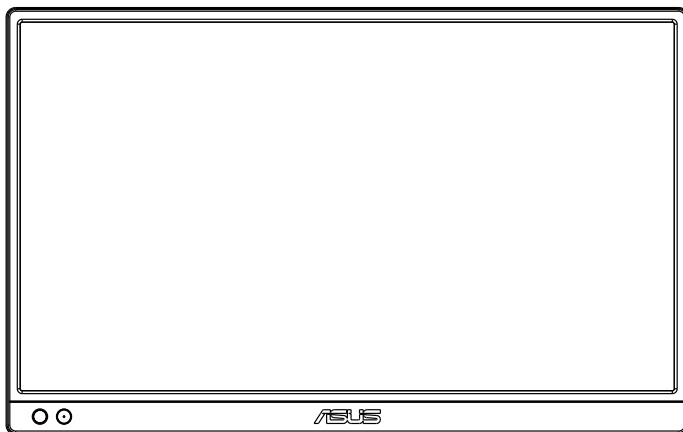




**MB169CK**

**Portable USB Monitor**

# **User Guide**



# Table of contents

- Notices..... iii
- Safety information ..... v
- Care & cleaning..... vii
- Takeback services ..... viii
- 1.1 Welcome! ..... 1-1
- 1.2 Package contents..... 1-1
- 1.3 Monitor introduction ..... 1-2
  - 1.3.1 Front view ..... 1-2
- 2.1 Monitor standing positions ..... 1-4
- 2.2 360° kickstand with drawstring pockets ..... 1-4
- 2.3 Connect the USB monitor with system..... 2-1
- 3.1 OSD (On-Screen Display) menu ..... 2-2
  - 3.1.1 How to reconfigure ..... 2-2
  - 3.1.2 OSD Function Introduction..... 3-1
- 3.2 DisplayWidget Center ..... 3-8
- 3.3 Specifications..... 3-9
- 3.4 Troubleshooting (FAQ)..... 3-10
- 3.5 Supported Timing List..... 3-12

Copyright © 2024 ASUSTeK COMPUTER INC. All Rights Reserved.

No part of this manual, including the products and software described in it, may be reproduced, transmitted, transcribed, stored in a retrieval system, or translated into any language in any form or by any means, except documentation kept by the purchaser for backup purposes, without the express written permission of ASUSTeK COMPUTER INC. ("ASUS").

Product warranty or service will not be extended if: (1) the product is repaired, modified or altered, unless such repair, modification or alteration is authorized in writing by ASUS; or (2) the serial number of the product is defaced or missing.

ASUS PROVIDES THIS MANUAL "AS IS" WITHOUT WARRANTY OF ANY KIND, EITHER EXPRESS OR IMPLIED, INCLUDING BUT NOT LIMITED TO THE IMPLIED WARRANTIES OR CONDITIONS OF MERCHANTABILITY OR FITNESS FOR A PARTICULAR PURPOSE. IN NO EVENT SHALL ASUS, ITS DIRECTORS, OFFICERS, EMPLOYEES OR AGENTS BE LIABLE FOR ANY INDIRECT, SPECIAL, INCIDENTAL, OR CONSEQUENTIAL DAMAGES (INCLUDING DAMAGES FOR LOSS OF PROFITS, LOSS OF BUSINESS, LOSS OF USE OR DATA, INTERRUPTION OF BUSINESS AND THE LIKE), EVEN IF ASUS HAS BEEN ADVISED OF THE POSSIBILITY OF SUCH DAMAGES ARISING FROM ANY DEFECT OR ERROR IN THIS MANUAL OR PRODUCT.

SPECIFICATIONS AND INFORMATION CONTAINED IN THIS MANUAL ARE FURNISHED FOR INFORMATIONAL USE ONLY, AND ARE SUBJECT TO CHANGE AT ANY TIME WITHOUT NOTICE, AND SHOULD NOT BE CONSTRUED AS A COMMITMENT BY ASUS. ASUS ASSUMES NO RESPONSIBILITY OR LIABILITY FOR ANY ERRORS OR INACCURACIES THAT MAY APPEAR IN THIS MANUAL, INCLUDING THE PRODUCTS AND SOFTWARE DESCRIBED IN IT.

Products and corporate names appearing in this manual may or may not be registered trademarks or copyrights of their respective companies, and are used only for identification or explanation and to the owners' benefit, without intent to infringe.

# Notices

## Federal Communications Commission Statement

This device complies with Part 15 of the FCC Rules. Operation is subject to the following two conditions:

- This device may not cause harmful interference, and
- This device must accept any interference received including interference that may cause undesired operation.

This equipment has been tested and found to comply with the limits for a Class B digital device, pursuant to Part 15 of the FCC Rules. These limits are designed to provide reasonable protection against harmful interference in a residential installation. This equipment generates, uses and can radiate radio frequency energy and, if not installed and used in accordance with manufacturer's instructions, may cause harmful interference to radio communications. However, there is no guarantee that interference will not occur in a particular installation. If this equipment does cause harmful interference to radio or television reception, which can be determined by turning the equipment off and on, the user is encouraged to try to correct the interference by one or more of the following measures:

- Reorient or relocate the receiving antenna.
- Increase the separation between the equipment and receiver.
- Connect the equipment to an outlet on a circuit different from that to which the receiver is connected.
- Consult the dealer or an experienced radio/TV technician for help.

## Canadian Department of Communications Statement

This digital apparatus does not exceed the Class B limits for radio noise emissions from digital apparatus set out in the Radio Interference Regulations of the Canadian Department of Communications.

This class B digital apparatus complies with Canadian ICES-003.



**NOTE: This monitor is ENERGY STAR certified.**

This product qualifies for ENERGY STAR in the factory default setting which can be restored by "Factory Reset" function in the OSD menu. Changing the factory default settings or enabling other features may increase power consumption that could exceed the ENERGY STAR specified limits.

# EAC

## Declaration of Conformity

This device complies with the requirements set out in the Council Directive on the Approximation of the Laws of the Member States relating to Electromagnetic Compatibility (2014/30/EU), Low-voltage Directive (2014/35/EU), ErP Directive (2009/125/EC) and RoHS directive (2011/65/EU). This product has been tested and found to comply with the harmonized standards for Information Technology Equipment, these harmonized standards published under Directives of Official Journal of the European Union.

## WEEE Symbol Statement

This symbol on the product or on its packaging indicates that this product must not be disposed of with your other household waste. Instead, it is your responsibility to dispose of your waste equipment by handing it over to a designated collection point for the recycling of waste electrical and electronic equipment. The separate collection and recycling of your waste equipment at the time of disposal will help to conserve natural resources and ensure that it is recycled in a manner that protects human health and the environment. For more information about where you can drop off your waste equipment for recycling, please contact your local city office, your household waste disposal service or the shop where you purchased the product.



## Safety information

- Before setting up this Portable USB Monitor, carefully read all the documentation that came with the package.
- To prevent fire or shock hazard, never expose this Portable USB Monitor to rain or moisture.
- Never try to open this Portable USB Monitor cabinet.
- Before using this Portable USB Monitor, make sure all cables are correctly connected and the power cables are not damaged. If you detect any damage, contact your dealer immediately.
- Avoid dust, humidity, and temperature extremes. Do not place this Portable USB Monitor in any area where it may become wet. Place this Portable USB Monitor on a stable surface.
- Never push objects or spill liquid of any kind into the slots on this Portable USB Monitor cabinet.
- If you encounter technical problems with this Portable USB Monitor, contact a qualified service technician or your retailer.
- This Portable USB Monitor is powered by USB port which complies with LPS and SELV circuit according to IEC60950-1:2005.

### WARNING

Usage of other than specified head- or earphones can result in hearing loss due to excessive sound pressures.

Please confirm the distribution system in building installation shall provide the circuit breaker rated 120/240V, 20A (maximum).

If provided with a 3-pin attachment plug on the power cord, plug the cord into a grounded (earthed) 3-pin outlet. Do not disable the power cord grounding pin, for example, by attaching a 2-pin adapter. The grounding pin is an important safety feature.

Stability Hazard.

The product may fall, causing serious personal injury or death. To prevent injury, this product must be securely attached to the floor/wall in accordance with the installation instructions.

A product may fall, causing serious personal injury or death. Many injuries, particularly to children, can be avoided by taking simple precautions such as:

ALWAYS use cabinets or stands or installation methods recommended by the manufacturer of the product set.

ALWAYS use furniture that can safely support the product.

ALWAYS ensure the product is not overhanging the edge of the supporting furniture.

ALWAYS educate children about the dangers of climbing on furniture to reach the product or its controls.

ALWAYS route cords and cables connected to your product so they cannot be tripped over, pulled or grabbed.

NEVER place a product in an unstable location.

NEVER place the product on tall furniture (for example, cupboards or bookcases) without anchoring both the furniture and the product to a suitable support.

NEVER place the product on cloth or other materials that may be located between the product and supporting furniture.

NEVER place items that might tempt children to climb, such as toys and remote controls, on the top of the product or furniture on which the product is placed.

If the existing product is going to be retained and relocated, the same considerations as above should be applied.

■ ASUS CONTACT INFORMATION		
■ ASUSTeK Computer Inc.	■ ASUS Computer International (America)	■ ASUS Computer GmbH (Germany and Austria)
Address 1F, No.15, Lide Rd., Beitou Dist., Taipei City, 112	Address 48720 Kato Rd, Fremont, CA 94538, USA	Address Harkortstr. 21-23 D-40880 Ratingen, Germany
Telephone +886-2-2894-3447	Telephone +1-510-739-3777	Telephone +49-1805-010920
Fax +886-2-2894-7798	Fax +1-510-608-4555	Website <a href="http://www.asus.de/">http://www.asus.de/</a>
E-mail <a href="mailto:info@asus.com.tw">info@asus.com.tw</a>	Website <a href="http://usa.asus.com/">http://usa.asus.com/</a>	Online Contact <a href="http://www.asus.de/sales">http://www.asus.de/sales</a>
Website <a href="http://www.asus.com.tw/">http://www.asus.com.tw/</a>		
■ Technical Support	■ Technical Support	■ Technical Support
Telephone +86-21-38429911	Telephone +1-812-282-2787 (English Only) +1-905-370-2787 (French Only)	Telephone +49-1805-010923
	Online Support <a href="http://support.asus.com/">http://support.asus.com/</a>	Support Fax +49-2102-959911
		Online Support <a href="http://support.asus.com/">http://support.asus.com/</a>

## Care & cleaning

- Cleaning. Turn your monitor off and unplug the cable. Clean the monitor surface with a lint-free, non-abrasive cloth. Stubborn stains may be removed with a cloth dampened with mild cleaner.
- Avoid using a cleaner containing alcohol or acetone. Use a cleaner intended for use with the LCD. Never spray cleaner directly on the screen, as it may drip inside the monitor and cause an electric shock.
- Please use [clean water] only as the cleaning method.

### The following symptoms are normal with the monitor:

- You may find slightly uneven brightness on the screen depending on the desktop pattern you use.
- When the same image is displayed for hours, an afterimage of the previous screen may remain after switching the image. The screen will recover slowly or you can turn off the Power Switch for hours.
- When the screen becomes black or flashes, or cannot work anymore, contact your dealer or service center to fix it. Do not repair the screen by yourself!

### Conventions used in this guide



**WARNING:** Information to prevent injury to yourself when trying to complete a task.



**CAUTION:** Information to prevent damage to the components when trying to complete a task.



**IMPORTANT:** Information that you **MUST** follow to complete a task.



**NOTE:** Tips and additional information to aid in completing a task.

### Where to find more information

Refer to the following sources for additional information and for product and software updates.

#### 1. ASUS websites

The ASUS websites worldwide provide updated information on ASUS hardware and software products. Refer to **<http://www.asus.com>**

## **2. Optional documentation**

Your product package may include optional documentation that may have been added by your dealer. These documents are not part of the standard package.

## **3. Protect your eyes with ASUS EYE CARE Monitors**

The latest ASUS monitors feature exclusive Blue Light and Flicker free technologies to keep your eyes healthy in today's digital world. Refer to

[https://www.asus.com/Microsite/display/eye\\_care\\_technology/](https://www.asus.com/Microsite/display/eye_care_technology/)

## **Takeback services**

ASUS recycling and takeback programs come from our commitment to the highest standards for protecting our environment. We believe in providing solutions for our customers to be able to responsibly recycle our products, batteries and other components as well as the packaging materials.

Please go to <http://csr.asus.com/english/Takeback.htm> for detail recycling information in different region.

## **Product information fro EU energy label**





## 1.1 Welcome!

Thank you for purchasing the ASUS® Portable USB Monitor!

The latest ASUS Portable USB Monitor provides great portability and simplicity to your daily life, enhancing both of your viewing experience and style.

## 1.2 Package contents

Check your package for the following items:

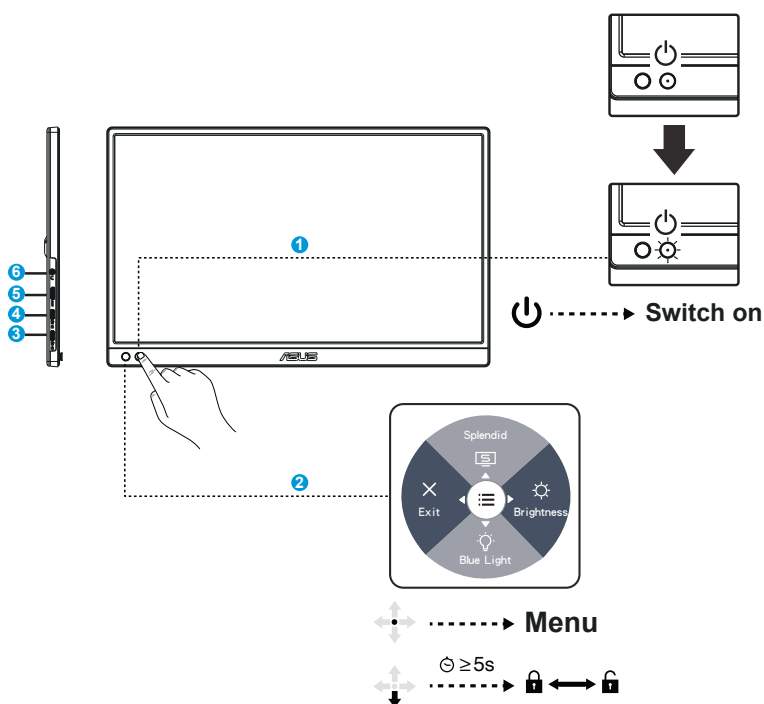
- ✓✔ Portable USB Monitor
- ✓✔ Quick Start Guide
- ✓✔ Warranty Card
- ✓✔ USB Type-C Cable
- ✓✔ Mini HDMI to HDMI Cable
- ✓✔ Protective Sleeve
- ✓✔ 360° kickstand
- ✓✔ Adapter (optional)



- 
- If any of the above items is damaged or missing, contact your retailer immediately.
-

## 1.3 Monitor introduction

### 1.3.1 Front view



#### 1. Power button/Power LED

- Press this button to turn the monitor on/off.
- The color definition of the power indicator is as the below table.

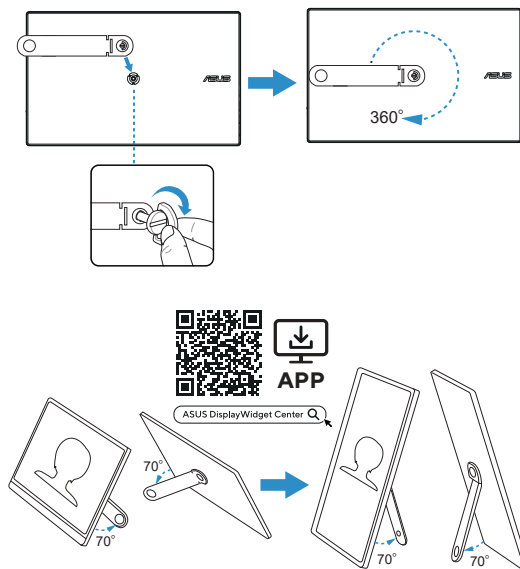
Status	Description
Blue	ON
Amber	Standby mode
Dark	OFF

#### 2. 5 way key

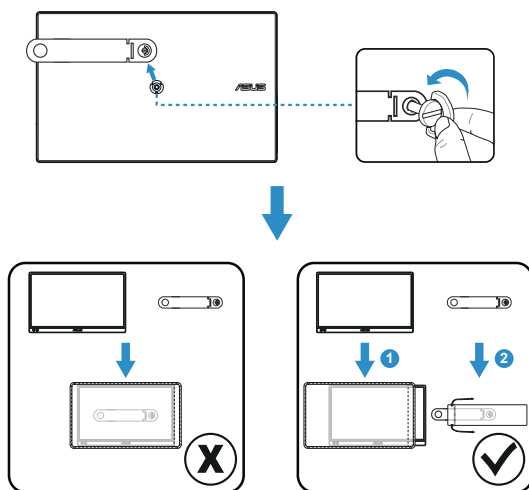
- Turns on the button functions menu. Enacts the selected OSD menu item.
- Increases/Decreases values or moves your selection up/down/left/right.

3. USB Type-C port
4. USB Type-C port
5. Mini-HDMI port
  - Connect your device with HDMI port.
6. Earphone jack Port:
  - Used to connect Earphone jack.

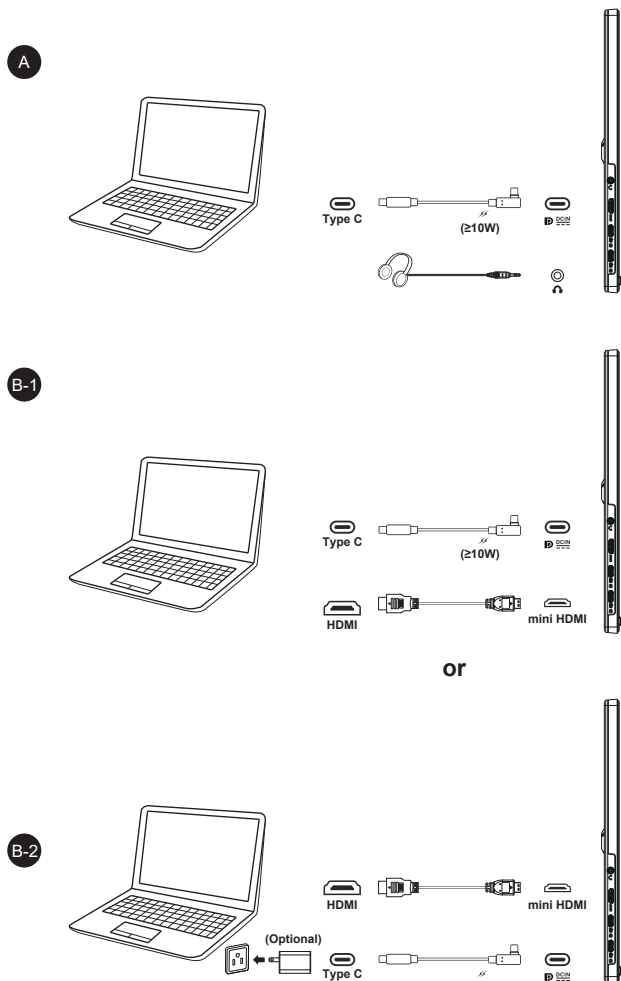
## 2.1 Monitor standing positions



## 2.2 360° kickstand with drawstring pockets



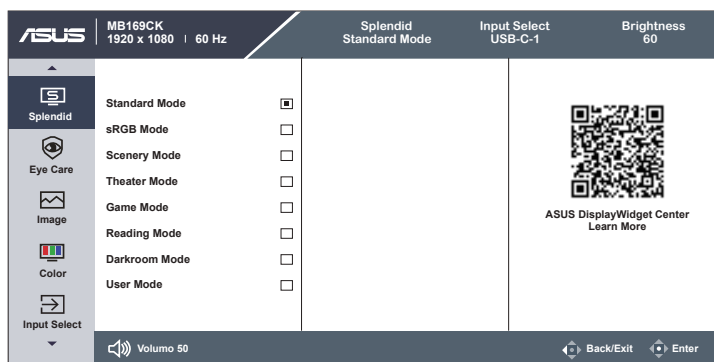
## 2.3 Connect the USB monitor with system



Please make sure the host system connected supports USB Type C “DisplayPort™ Alt Mode ” & USB Type C cable is correctly connected between USB monitor and the host system.

## 3.1 OSD (On-Screen Display) menu

### 3.1.1 How to reconfigure

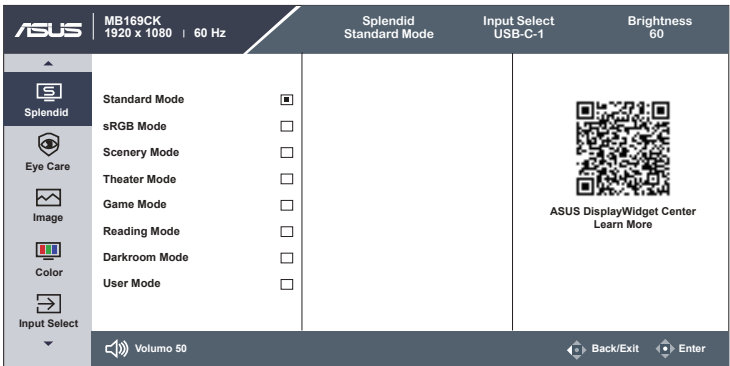


1. Press the MENU button to activate the OSD menu.
2. Press the ▼ and ▲ buttons to toggle between options in the Menu. As you move from one icon to another, the option name is highlighted.
3. To select the highlighted item on the menu press the Central key.
4. Press the ▼ and ▲ buttons to select the desired parameter.
5. Press the Central key to enter the slide bar and then use the ▼ or ▲ buttons, according to the indicators on the menu, to make your changes.

### 3.1.2 OSD Function Introduction

#### 1. Splendid

This function contains eight sub-functions that you can select for your preference.



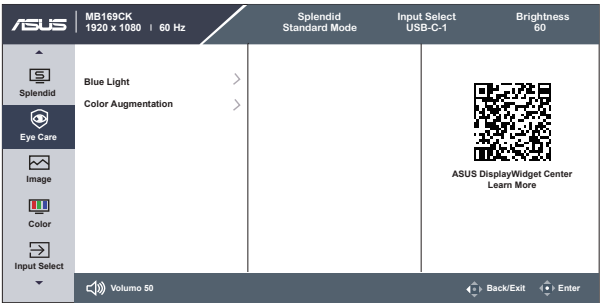
- **Standard Mode:** This is the best choice for document editing with SPLENDID™ Video Intelligence Technology.
- **sRGB Mode:** This is the best choice for viewing photos and graphics from PCs.
- **Scenery Mode:** This is the best choice for scenery photo displaying with SPLENDID™ Video Intelligence Technology.
- **Theater Mode:** This is the best choice for movie watching with SPLENDID™ Video Intelligence Technology.
- **Game Mode:** This is the best choice for game playing with SPLENDID™ Video Intelligence Technology.
- **Reading Mode :** This is the best choice for book reading.
- **Darkroom Mode :** This is the best choice for a weak ambient light environmen.
- **User Mode:** More items are adjustable for color adjustments.



- In the sRGB, the Saturation, Color Temp. and Contrast functions are not user-configurable.

## 2. Eye Care

Adjust the energy level of Eye Care from LED backlight.



- **Blue Light:** In this function, you can adjust the blue light five steps. OFF: no changes; Level 4: The higher the level, the less blue light is scattered. When blue light is activated, the default settings of Standard Mode will be automatically imported. Besides maximum level, the brightness is user-configurable. Maximum is the optimized setting. It is compliance with TUV low blue lig.
- **Color Augmentation:** The adjusting range of color enhancement is from 0 to 100.



- This function is not available in sRGB mode under Splendid.



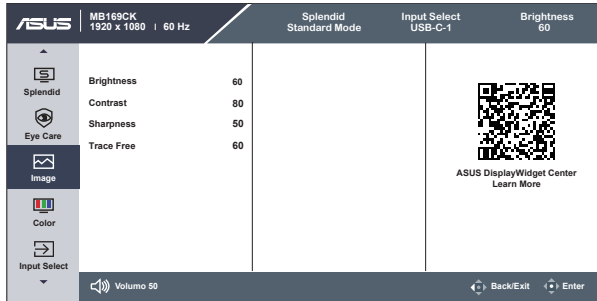
Please refer to the following to alleviate eye strains:

- Users should take some time away from the display if working for long hours. It is advised to take short breaks (at least 5 mins) after around 1 hour of continuous working at the computer. Taking short and frequent breaks is more effective than a single longer break.
- To minimize eye strain and dryness in your eyes, users should rest the eye periodically by focusing on objects that are far away.
- Eye exercises can help to reduces eye strain. Repeat these exercises often. If eye strain continues please consult a physician. Eye exercises: (1) Repeating look up and down (2) Slowly roll your eyes (3) Move your eyes diagonal.
- High energy blue light may lead to eye strain and AMD (Age-Related Macular Degeneration). Blue Light to reduce 70% (max.) harmful blue light to avoiding CVS (Computer Vision Syndrome).



### 3. Image

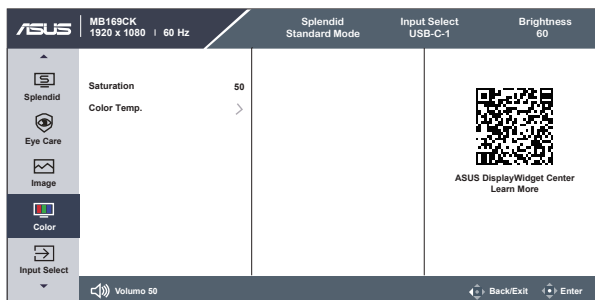
You can adjust the image Brightness, Contrast, Sharpness, Trace Free from this main function.



- **Brightness:** The adjusting range is from 0 to 100.
- **Contrast:** The adjusting range is from 0 to 100.
- **Sharpness:** Adjusts the picture sharpness. The adjusting range is from 0 to 100.
- **Trace Free:** Speeds up the response time by Over Drive technology. The adjusting range is from lower 0 to faster 100.

## 4. Color

Select the image color you like from this function.



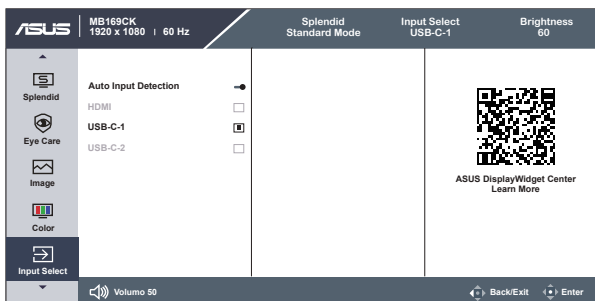
- **Saturation:** The adjusting range is from 0 to 100.
- **Color Temp.:** Contains three preset color modes (**Cool**, **Normal**, **Warm**) and **User Mode**.



- In the User Mode, colors of R (Red), G (Green), and B (Blue) are user-configurable; the adjusting range is from 0 ~ 100.

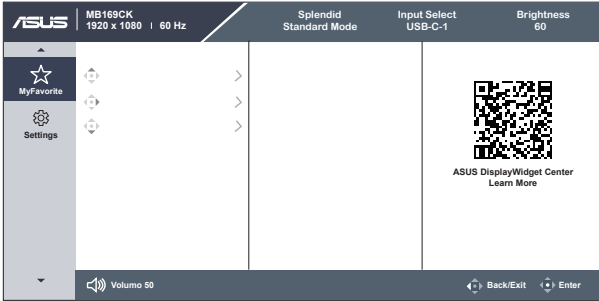
## 5. Input Select

Select the input source: Auto Input Detection, HDMI, USB-C-1, USB-C-2.



## 6. MyFavorite

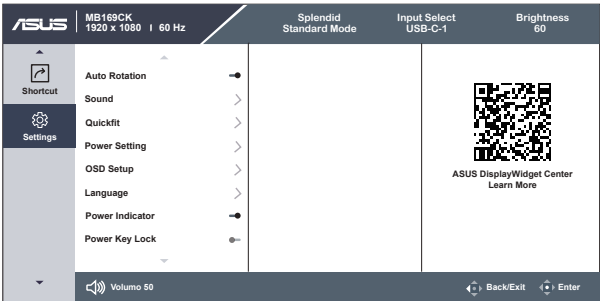
Selecting this option allows you to set three MyFavorite keys.



- : User can select from “Splendid”, “Brightness”, “Contrast”, “Auto Rotation”, “Volume”, “Mute”, “Input Select”, “Blue Light”, “Color Temp.” and set as MyFavorite key. The default setting is Splendid.
- : User can select from “Splendid”, “Brightness”, “Contrast”, “Auto Rotation”, “Volume”, “Mute”, “Input Select”, “Blue Light”, “Color Temp.” and set as MyFavorite key. The default setting is Brightness.
- : User can select from “Splendid”, “Brightness”, “Contrast”, “Auto Rotation”, “Volume”, “Mute”, “Input Select”, “Blue Light”, “Color Temp.” and set as MyFavorite key. The default setting is Blue Light.

## 7. Settings

Adjusts the system configuration.

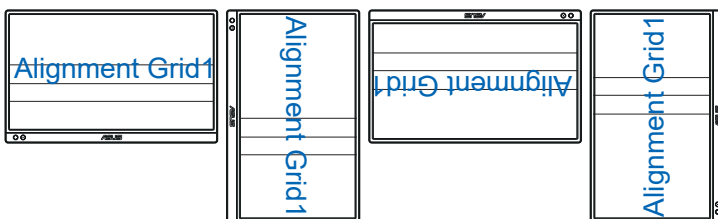


- **Auto Rotation:** To enable/disable rotate image automatically. Please be noted that Auto rotation function is only working under Windows OS by installing DisplayWidget Center software.

- **Sound:** Adjust Volume, and Mute from this main function.
- **QuickFit:** The QuickFit function contains two patterns: (1) Grid (2) Photo size.

1. Grid pattern: Facilitates designers and users to organize content and layout on one page and achieve a consistent look and feel.

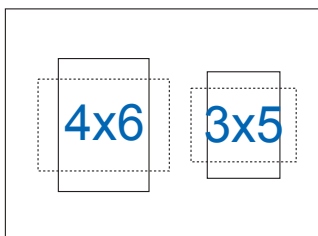
Alignment grid 1 will be rotated automatically if auto rotation is enabled.



- Auto rotation function is only working under Windows OS by installing DisplayWidget Center software.



2. Photo size: Provides photographers and other users to accurately view and edit their photos in real size on the screen.



- **Power Setting:** Adjusts the “Performance Mode” and “Power Saving Mode” for the Power Setting function.
- **OSD Setup:** Adjusts the **OSD Timeout**, **DDC/CI**, and **Transparency** of the OSD screen.
- **Language:** Select OSD language. The selections are: **English, French, German, Spanish, Italian, Dutch, Russian, Poland, Czech, Croatia, Hungary, Romania, Portugal, Turkey, Simplified Chinese, Traditional Chinese, Japanese, Korean, Persian, Thai, Indonesian, Ukraine, and Vietnamese.**
- **Power Indicator:** Turn the power LED indicator on/off.
- **Power Key Lock:** To disable / enable power key.
- **Key Lock:** Disable all key functions. Pressing down key for more than five seconds to disable key lock function.
- **Information:** Displays the monitor information.
- **All Reset:** Selects “Yes” to revert all settings to the factory default mode.

## 3.2 DisplayWidget Center

Please go to MB169CK official website, find “Support” tab and choose “Driver &Utility” to download latest DisplayWidget Center.

Please always connect your MB169CK to input device **FIRST**, and then turn on DisplayWidget Center.

We also suggest you to create a shortcut of DisplayWidget Center on your computer desktop for easier activation.




### 3.3 Specifications

Model	MB169CK
Panel Size	15.6" (16:9, 39.62cm) wide screen
Resolution	1920 x 1080
Brightness (Typ.)	250 cd/m <sup>2</sup>
Contrast (Typ.)	1000:1
Display Colors	262 K
Digital Input	USB Type-C™ (DisplayPort™ Alt Mode) / Mini HDMI
Colors	Black
Power Consumption	7.64 W (Based on Energy Star 8.0 Standard)
Operating Temp.	0° ~ 40°
Phys. Dimension (WxHxD)	36.01 x 22.56 x 1.18 cm
Box Dimension (WxHxD)	43.4 x 29.0 x 7.6 cm
Net Weight (Esti.)	0.78kg
Gross Weight (Esti.)	1.7kg
Voltage Rating	5V or 9V ---, 3.0A Or 12V ---, 2.5A Or 15V ---, 2.0A Or 20V ---, 1.5A

\*Specifications are subject to change without notice.

## 3.4 Troubleshooting (FAQ)

Problem	Possible Solution
Power LED is not ON	<ul style="list-style-type: none"><li>• Press the  button to check if the monitor is in the ON mode.</li><li>• Check if the USB Type-C cable is properly connected to the monitor and the computer.</li></ul>
The power LED lights amber and there is no screen image	<ul style="list-style-type: none"><li>• Check if the monitor and the computer are in the ON mode.</li><li>• Make sure the USB Type-C cable is properly connected between the Portable USB Monitor and the computer.</li><li>• Inspect the signal cable and make sure none of the pins are bent.</li><li>• Connect the computer with another available monitor to check if the computer is properly working.</li></ul>
Screen image is too light or dark	<ul style="list-style-type: none"><li>• Adjust the Brightness settings via the button.</li></ul>
Screen image bounces or a wave pattern is present in the image	<ul style="list-style-type: none"><li>• Make sure the USB Type-C cable is properly connected between the Portable USB Monitor and the computer.</li><li>• Move electrical devices that may cause electrical interference.</li></ul>
Screen image has color defects (white does not look white)	<ul style="list-style-type: none"><li>• Inspect the USB Type-C cable and make sure that none of the pins are bent.</li></ul>



Problem	Possible Solution
<p>After connecting with the USB Type-C source device, the power LED lights continuously blinking or showing ASUS logo repeatedly</p>	<ul style="list-style-type: none"> <li>• Insufficient power supply from source USB Type-C devices. Please follow below steps:</li> <li>• Press the left function key, and then connect the USB Type-C cable. This operation will enable built-in safe mode. After displaying ASUS logo, please release the Blue Light button. After ASUS Logo disappearing, there is "safe mode" message OSD showing up. Once "safe mode" message OSD disappears, please set background color to white image or nearly white image (*1).</li> <li>• Press <b>MENU</b> button, main menu OSD is showing. The upper left corner of the OSD will display small red-colored font "S", indicating it is now in safe mode. Enter brightness setup, press the up key to tune up brightness. During the process, please note down brightness value "Y" up until MB169CK re-start.(*2). For example, if brightness value shows "70" and MB169CK restarts when adjusting to "71", "70" is the "Y" value to note down and is the highest brightness value for the connecting USB-C source device.</li> <li>• Press <b>MENU</b> button, main menu OSD is showing. The upper left corner still indicate "S" as safe mode. Adjust the OSD brightness value to "Y"</li> <li>• Close the OSD and press Left button to cancel safe mode hot key for 5 seconds to turn off safe mode.</li> <li>• Complete.</li> </ul>

\*1: White color background will consume higher power, so it's better to use white color background to test the power limit from source USB Type-C device.

\*2: If MB169CK does not re-start when adjusting to value 100, that means source USB Type-C device has sufficient power supply.

## 3.5 Supported Timing List

### Supported Primary Timing

Timing	Resolution	HDMI	TYPE-C
PC Timing	640x480-60Hz	V	V
	800x600-60Hz	V	V
	1024x768-60Hz	V	V
	1280x720-60Hz	V	V
	1280x960-60Hz	V	V
	1280x1024-60Hz	V	V
	1600x900-60Hz	V	V
	1920x1080-60Hz	V	V
Video Timing	640x480-60Hz	V	V
	720x480-60Hz	V	V
	720x576-50Hz	V	V
	1280x720-50Hz	V	V
	1280x720-60Hz	V	V
	1920x1080-50Hz	V	V
	1920x1080-60Hz	V	V

### 16:9 Timing

Timing	Resolution	HDMI	TYPE-C
Detail Timing	1920x1080-60Hz	V	V

\* The modes not listed in the above tables may not be supported. For optimal resolution, we recommend that you choose a mode listed in the above tables.