



read me  
English (en-US)



[motorola.com/razr2025/us](https://motorola.com/razr2025/us)

**English** Scan with your **Camera** app for guides and how-to videos.  
**Español** Escanea el código QR con la aplicación **Cámara** para acceder a guías y videos tutoriales.



## Phone open

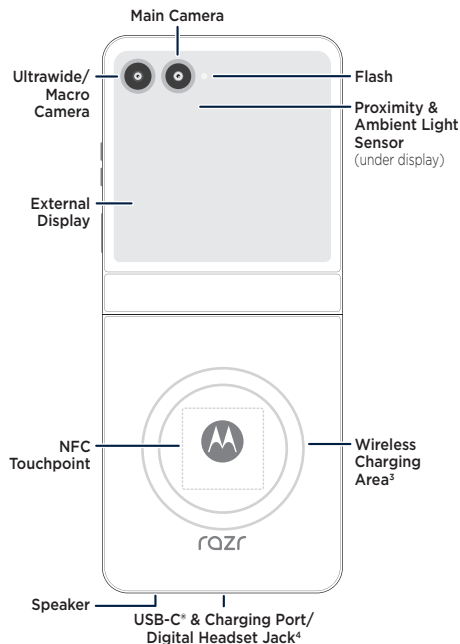


**¹Protect your main display:** Please do not remove the attached screen protector or use third party screen protectors. Doing so will void the device warranty.

**²Air vent:** To prevent noise during calls or media playback, ensure that protective accessories like films, covers, and their adhesives do not obstruct the air vent hole.



## Phone back



**³Wireless Charging:** Charge your phone using a Qi-certified wireless charger (may be sold separately).

**⁴Use a digital headset:** To use a digital headset, you'll need one with a USB-C connector. If using a 3.5mm headset, you'll need a 3.5mm to USB-C digital headset adapter to connect it. Headset and adapter may be sold separately.



With **moto care**, extend your warranty coverage up to three years, and take advantage of features like accidental damage protection. Visit: [motorola.com/motocare](https://motorola.com/motocare) (U.S. only, except P.R.)



[motorola.com](https://motorola.com)



## PART NUMBER



[VDR] [LOC] MMM/YY  
Printed in [Country]

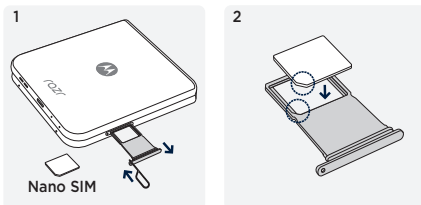
## Put in the card

Your new phone might already have the SIM card inserted. If not, insert the SIM card as shown.

- 1 **With the phone closed and the external display facing down**, insert the SIM tool into the SIM card tray hole to pop out the tray.



Make sure you use a standard Nano SIM card and don't cut the SIM card.

- 2 Insert the SIM card with the gold contacts down, and the notch aligned with the card tray, then gently push the tray into the slot.



**eSIM option:** If your phone supports an eSIM (embedded SIM card) in addition to the physical SIM card, you can find **EID • eSIM** by swiping up and tapping **Settings > About phone > Device details**. Contact your service provider for details and eligibility if you want to activate and use it.

## Power on and off

- Press and hold the Power button  to turn on your phone, then follow the prompts to get started.
- To turn off your phone, press the Power and Volume Up buttons  at the same time.

## Take care of your phone

To guarantee your warranty service and ensure you have a satisfying phone experience, please care for your phone as follows:



Don't use third-party screen protectors. Your phone comes with a Motorola-developed screen protector customized to Razer's unique foldable design. The Motorola screen protector is of superior quality and preserves the predicted service life of your phone. In contrast, using third-party screen protectors may reduce your phone's screen sensitivity, cause the main display to become unresponsive, damage the screen, or cause other touch screen problems. In such cases, Motorola reserves the right to evaluate the situation and decide whether to provide you with free-of-charge warranty service during the remaining warranty period.



Contact an authorized Motorola service center if your screen protector has air bubbles, warps, or separates from the main display during use. We may replace the screen protector because a compromised screen protector can damage the main display and shorten the service life of the phone.



If damaged, the screen protector on your phone can be replaced by suitably competent individuals following Motorola-approved repair and service manuals, or by Motorola-approved service personnel. Motorola recommends that the screen protector is replaced by a Motorola-approved service personnel in order to avoid screen damaging and warranty voidance.



Take care not to physically damage your phone. Don't puncture or apply excessive force to the main display with a hard or sharp object while carrying your phone. Before closing the phone, always ensure that there are no obstructions between the screens or hinges. Items such as cards, coins, keys, and other objects can damage your screen or prevent your phone hinge from closing properly. Don't use excessive force to press the middle area of the screen. Avoid exposing your phone to water, coffee, or other liquids. Also, don't expose your phone to tiny pieces of debris, such as grit.



**Important:** This product contains magnets. Always keep products with magnets more than 20cm (8 inches) from medical devices, such as pacemakers, internal cardio defibrillators, or other devices that can be affected by a magnetic field. Also, keep away from credit cards, ID cards, and other media that use magnetically encoded information.



**Reminder:** The crease at the bend on the main display and the faint noise you may hear while flipping open the phone are part of the design and do not impact product durability.

## Help & more

Get answers, updates, and info:

- **Help is here:** From the home screen, swipe up and tap **Settings > Help** to learn how to use your phone and get support.
- **Get more:** Get software, user guides, and more at [www.motorola.com/myrazr](http://www.motorola.com/myrazr).
- **Connect with 5G:** 5G service plan and 5G network coverage required; available only in select areas; device not compatible with all 5G networks. Contact your service provider for details.

**Legal information.** This guide provides important legal, safety, and regulatory information that you should read before using your product. For the complete legal information, from the home screen swipe up and tap **Settings > Q**, then type **Legal information**, or visit [www.motorola.com/device-legal](http://www.motorola.com/device-legal).

**Dust and water resistance.** For detailed information about your phone's dust and water resistance design and care tips, swipe up and tap **Settings > Help**, or refer to the *User Guide*.

**Charging and battery safety.** The battery in your phone can be removed by suitably competent individuals following Motorola-approved repair and service manuals. To prevent possible burning and injury, always follow the instructions provided. If your phone becomes unresponsive, press and hold the Power button until the screen goes dark and your phone restarts. For the fastest charging speed, charge your phone using a Motorola 30W or higher USB-C PD (Power Delivery)/USB-A QC (Quick Charge) charger and a Motorola PD/QC cable. Both may be sold separately. Other compatible chargers and cables may be used to charge the device. However, use of such chargers/cables is not recommended and may result in slower charging speeds.

Chargers that do not comply with applicable national standards may be unsafe, with risk of death or injury, and may cause slow charging or product damage. Don't charge your phone in temperatures below -20°C (-4°F) or above 45°C (113°F). To view applicable standards and to learn more, see the "Legal information" section of this guide, or visit [www.motorola.com/device-legal](http://www.motorola.com/device-legal).

**Warning about high volume usage.** To prevent possible hearing damage, do not listen at high volume levels for long periods. When your headset volume reaches the high volume threshold, a warning shows. Tap **OK** to dismiss it, or wait one to five seconds, then press the Volume Up button to dismiss the alert and enable the volume to continue to be adjusted.



**Hearing Aid Compatibility (HAC).** The lowest conversational gain for this phone is 8.9dB with a hearing aid, and 14.3dB without a hearing aid. For more information, see the legal guide that came with your phone.

**Disposal & recycling.** Don't dispose of your battery or mobile device with your household waste. For help recycling products and packaging responsibly, visit [www.motorola.com/recycling](http://www.motorola.com/recycling).



**Class 1 Laser.** This device is classified as a Class 1 Laser product, which is safe in normal use per IEC60825-1:2014.

**CLASS 1 LASER PRODUCT** This device complies with 21 CFR 1040.10 and 1040.11, except for conformance with IEC60825-1:2014, as described in Laser Notice No.56, dated May 8, 2019. Do not attempt to modify or disassemble.

**Extreme heat or cold.** Don't use your phone in temperatures below -20°C (-4°F) or above 45°C (113°F). Don't store or transport your phone in temperatures below -20°C (-4°F) or above 60°C (140°F).

**Legal disclaimers.** Features, services, and applications are network dependent and may not be available in all areas; additional terms/charges may apply. Product specifications and other information contained in this guide are believed to be accurate at the time of printing or release. Motorola reserves the right to correct or change any information without notice.

**Arbitration.** Your purchase is governed by a binding arbitration clause. For more information and how to opt-out, see the legal guide that came with your phone.

**Copyright & trademarks.** MOTOROLA, the stylized M logo, MOTO, and the MOTO family of marks are trademarks or registered trademarks of Motorola Trademark Holdings, LLC. USB Type-C® and USB-C® are registered trademarks of USB Implementers Forum. All other product or service names are the property of their respective owners.

© 2025 Motorola Mobility LLC. All rights reserved.  
Product ID: **motorola razr 2025** (Model XT2553-3/XT2553V)  
Manual Number: SSC8E72759-A