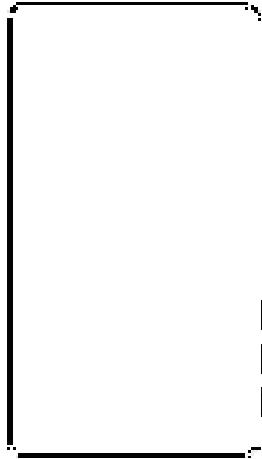


Product Model:CP5



Product Manual

Shenzhen ZO Video Technology Co., Ltd.

1: Product Highlights



Full HD Screen



Record & Playback



3.5 Hours  
Battery Life



Shutter Control

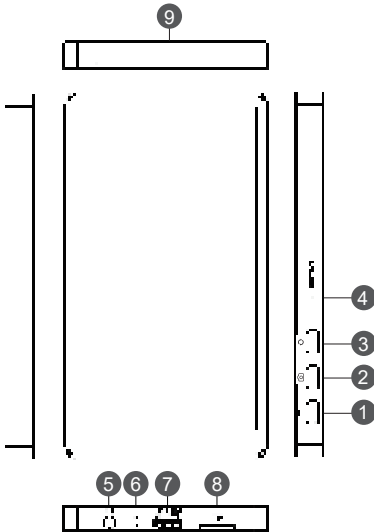


50m  
Transmisson Range



40ms  
Latency

2: Product Design



- 1

Power Switch
- 2

Shutter Button
- 3

Screen Rotation
- 4

Reset Hole
- 5

Headphone Jack
- 6

Battery Status Light
- 7

Type-C Port
- 8

TF-Card Slot
- 9

Antenna Cover

CP5 Takes 2 Hours To Fully Charge.  
(Please use a power adapter of 5V= 2A or higher for charging.)

Battery Status Light Indicators:

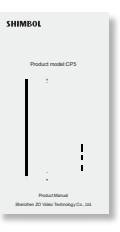
Connected to USB Power:	Light On	Battery Charging
	Light Off	Battery Fully Charged
Not Connected to USB:	Light Off	No Status Indicated

3: Package List



1

CP5



2

Product Manual



3

Type-C Cable



4

TF Card

4: Parameter

Model	CP5
Ports	Type-C Port TF Card Port 3.5mm Headphone Jack
Power Supply	Type-C 5V/ Built in Battery
Power Consumption	<3W
Weight	123g
Dimensions	123.92*69.24*9.6mm
Bluetooth Shutter Control	Support
Transmission Frequency	2.4G／5GHz
Transmission Latency	40ms
Receiving Sensitivity	-85dBm

5: Hazardous Substances in Electronic Products

Component Name	Toxic and Hazardous Substances or Elements					
	Lead (pb)	Mercury (Hg)	Cadmium (Cd)	Hexavalent Chromium (Cr+)	Polybrominated Biphenyls (PBB)	Polybrominated Diphenyl Ethers (PBDE)
Screen	<input type="radio"/>	<input type="radio"/>	<input type="radio"/>	<input type="radio"/>	<input type="radio"/>	<input type="radio"/>
Shell	<input type="radio"/>	<input type="radio"/>	<input type="radio"/>	<input type="radio"/>	<input type="radio"/>	<input type="radio"/>
Circuit Board	<input type="radio"/>	<input type="radio"/>	<input type="radio"/>	<input type="radio"/>	<input type="radio"/>	<input type="radio"/>
Wires	<input type="radio"/>	<input type="radio"/>	<input type="radio"/>	<input type="radio"/>	<input type="radio"/>	<input type="radio"/>
Packaging Material	<input type="radio"/>	<input type="radio"/>	<input type="radio"/>	<input type="radio"/>	<input type="radio"/>	<input type="radio"/>
Metal	<input type="radio"/>	<input type="radio"/>	<input type="radio"/>	<input type="radio"/>	<input type="radio"/>	<input type="radio"/>
Battery	<input type="radio"/>	<input type="radio"/>	<input type="radio"/>	<input type="radio"/>	<input type="radio"/>	<input type="radio"/>

☐ : Indicates that the content of the hazardous substance in all homogeneous materials of this component is below the limit requirements specified in GB/T 26575-2011.

☒ : Indicates that the content of the hazardous substance in at least one homogeneous material of this component exceeds the limit requirements specified in GB/T 26575-2011.

According to the Chinese electronic industry standard SJ/T 11364-2014 and relevant government regulations, this product and some of its internal or external components may carry an environmental protection use period label. The use period label may vary depending on the components and their manufacturers. The use period label on the components takes precedence over any conflicting or different environmental protection use period labels on the product.

6: Safety Precautions

- 1.This product is designed to operate in environments with temperatures between 0°C and 35°C, and should be stored at temperatures between -20°C and 45°C. Extreme temperatures can affect the product's performance and may damage both the product and the battery. Please avoid charging outside the 0°C to 35°C range to prevent reduced battery performance or damage.
2. Please do not place this product or battery near heating devices, cooking appliances, or pressure vessels (such as microwaves, induction cookers, ovens, heaters, pressure cookers, water heaters, gas stoves, etc.) or inside them, as this may cause the battery to overheat and potentially explode.
3. User must use certified and compatible chargers, data cables, and batteries. Using unapproved adapters or cables may result in electric shock, fire, explosion, or other hazards.
4. This product is not designed to be waterproof and does not support immersion in liquids. Please do not use this product in or near liquids to avoid device damage
5. The TF card does not support hot swapping (inserting or removing the TF card while the device is working is not supported).

**Warning:** The following actions may pose safety risks to the battery and lead to safety issues during normal use of this product:

1. Disassembling the battery yourself.
2. Applying excessive pressure or puncturing the product.
3. Placing the phone in a microwave, near a flame, or close to other heat sources.
4. Allowing the product to come into contact with water or other liquids.

Battery Tips:

- 1、Increasing screen brightness will reduce battery runtime.
- 2、Keeping the Bluetooth remote control function on for extended periods will increase power consumption; it is recommended to turn off Bluetooth when not in use.

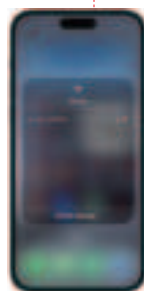
## 7 : 🍏 Direct Connection Mode/Wi-Fi Router Mode

### Direct Connection Mode

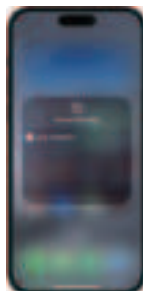
Turn on CP5 and Enter The WLAN Interface



Connect CP5's Internal Wi-Fi on The Phone



Connect "Screen Mirroring" on The Phone



### Wi-Fi Router Mode

Set the CP5 to WiFi Router Mode.  
Click "WiFi Connection"  
to access the WLAN interface.  
Connect the CP5 to Wi-Fi.



Connect CP5's Internal Wi-Fi on The Phone



Connect "Screen Mirroring" on The Phone



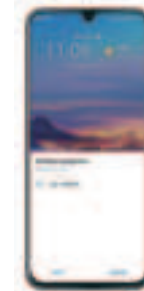
## 8 : 🤖 Direct Connection Mode/Wi-Fi Router Mode

### Direct Connection Mode

Turn on CP5 and Enter The WLAN Interface



Connect "Wireless Projection " on The Phone

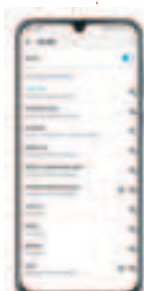


### Wi-Fi Router Mode

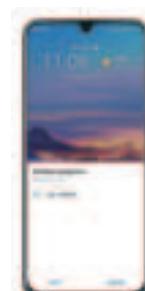
Set the CP5 to WiFi Router Mode.  
Click "WiFi Connection"  
to access the WLAN interface.  
Connect the CP5 to Wi-Fi.



Connect CP5's Internal Wi-Fi on The Phone



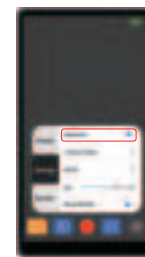
Connect "Wireless Projection " on The Phone



## 9 : 2 Ways of Wireless Shutter Control

### CP5 Wireless Shutter Control

Turn on Bluetooth Function on CP5



Connect CP5's internal Bluetooth on The Phone



Open the Camera Interface on The Phone



Press The 'Shutter Button' on The CP5 to Control the Shutter



### FCC Warning

This device complies with Part 15 of the FCC Rules. Operation is subject to the following two conditions:  
(1) This device may not cause harmful interference, and (2) this device must accept any interference received, including interference that may cause undesired operation.

NOTE 1: This equipment has been tested and found to comply with the limits for a Class B digital device, pursuant to part 15 of the FCC Rules. These limits are designed to provide reasonable protection against harmful interference in a residential installation. This equipment generates, uses and can radiate radio frequency energy and, if not installed and used in accordance with the instructions, may cause harmful interference to radio communications. However, there is no guarantee that interference will not occur in a particular installation. If this equipment does cause harmful interference to radio or television reception, which can be determined by turning the equipment off and on, the user is encouraged to try to correct the interference by one or more of the following measures:  
- Reorient or relocate the receiving antenna.  
- Increase the separation between the equipment and receiver.  
- Connect the equipment into an outlet on a circuit different from that to which the receiver is connected.  
- Consult the dealer or an experienced radio/TV technician for help.

NOTE 2: Any changes or modifications to this unit not expressly approved by the party responsible for compliance could void the user's authority to operate the equipment.

The device has been evaluated to meet general RF exposure requirement. The device can be used in portable exposure condition without restriction.



Tel: +86 0755-21004986

Web: [www.shimbol-tech.com](http://www.shimbol-tech.com)

Add: 2C,2nd Floor, 6th Building, Longbi Industrial Park, Dafalu No. 27, Bantian Street,  
Longgang District, Shenzhen, Guangdong Province, China  
Shenzhen ZO Video Technology Co., Ltd.