

Customer Service



Warranty: 36-Month Limited Warranty



Support: Lifetime Technical Support



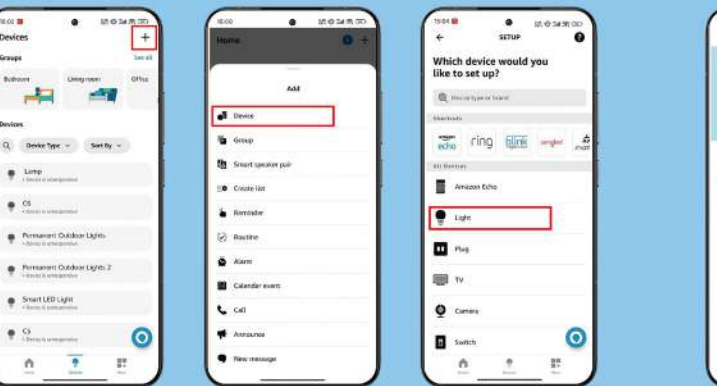
Email: xuelanmu1121@126.com

How to connect to Alexa?

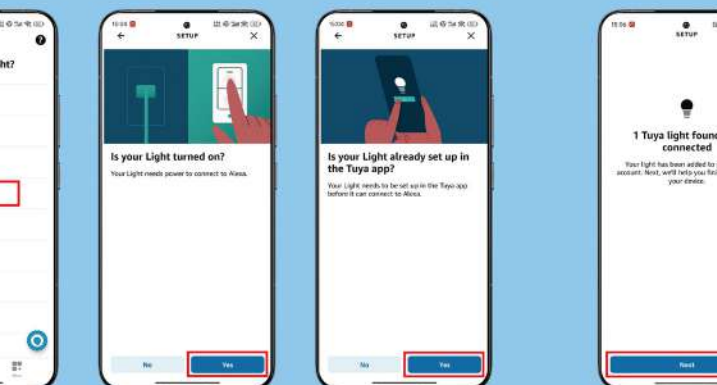
Name and Control Each Device by Voice



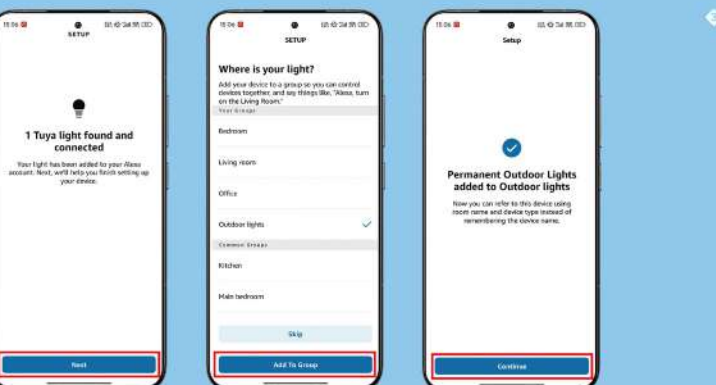
- Make sure your phone is connected to the Alexa, then open the Alexa app and go to Configure
- Add the Permanent Outdoor Lights to your Alexa



— 11 —

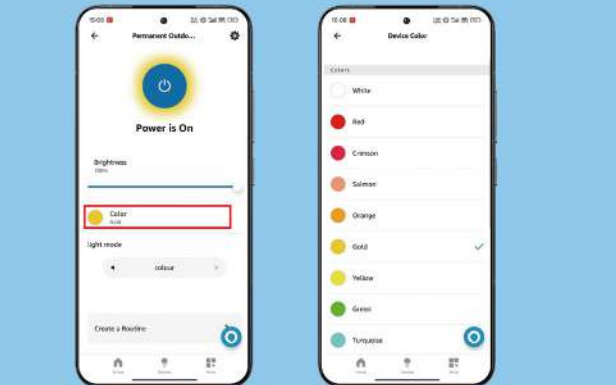


— 12 —



— 13 —

Now you can control your Permanent Outdoor Lights via the alexa app or echo!



Voice Control Quick Guide for Alexa Assistant

- After you have successfully connected you can control test the light with the following commands.
- Alexa, turn on Permanent Outdoor Lights.
- eAlexa, turn off Permanent Outdoor Lights

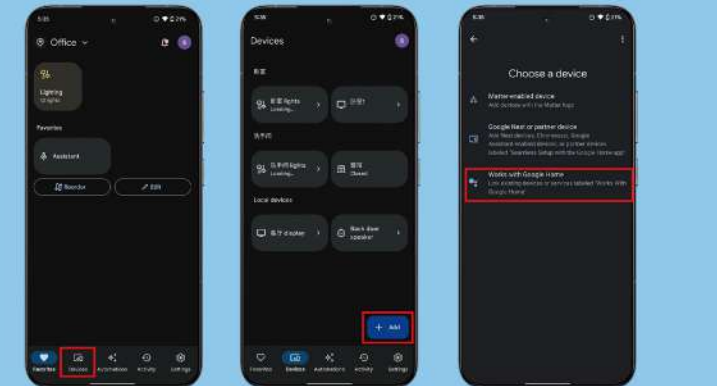
— 14 —

How to connect to Google Home?

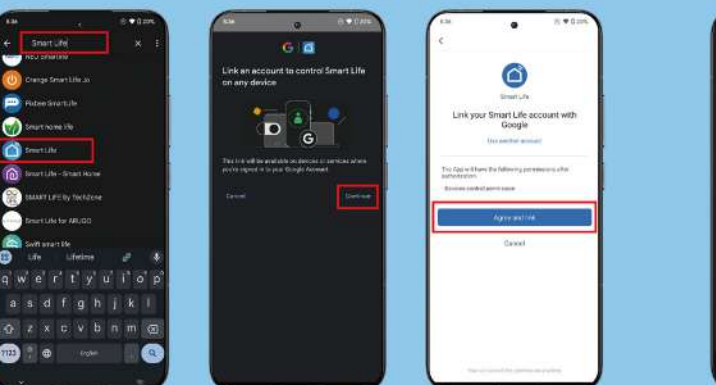
Name and Control Each Device by Voice



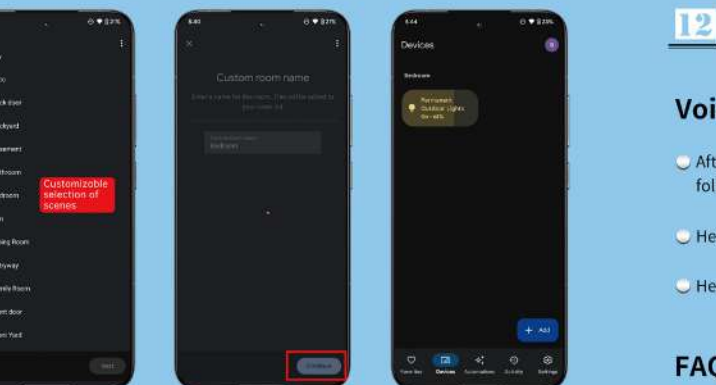
- Make sure your "Smart Life" app is signed in with your Google account and connected to Permanent Outdoor Lights.
- Open your "Google Home" APP, enter the main interface, click "Devices" interface, and add it according to the step by-step diagram.



— 15 —



— 16 —



— 17 —

Timing Settings

Voice Control Quick Guide for Google Assistant

- After you have successfully connected you can control or test the light with the following commands.
- Hey,Google,turn on Permanent Outdoor Lights.
- Hey,Google,turn off Permanent Outdoor Lights.

FAQS

- Failure to connect the Wi-Fi network
 - Ensure Wi-Fi network is 2.4GHz,not supported 5GHz
 - Check the Wi-Fi name and password are correct
 - Close to the router for a strong signal.
- The application does not work properly
 - Close all apps running in the background and reopen the Smart Life app.
 - Uninstall and reinstall the Smart Life app, then repeat the above steps.
- The smart lights can not connect to the application
 - Make sure the lights are powered on.
 - Reset it.

— 18 —

URCAMS

Smart Permenet Outdoor Lights User Manual



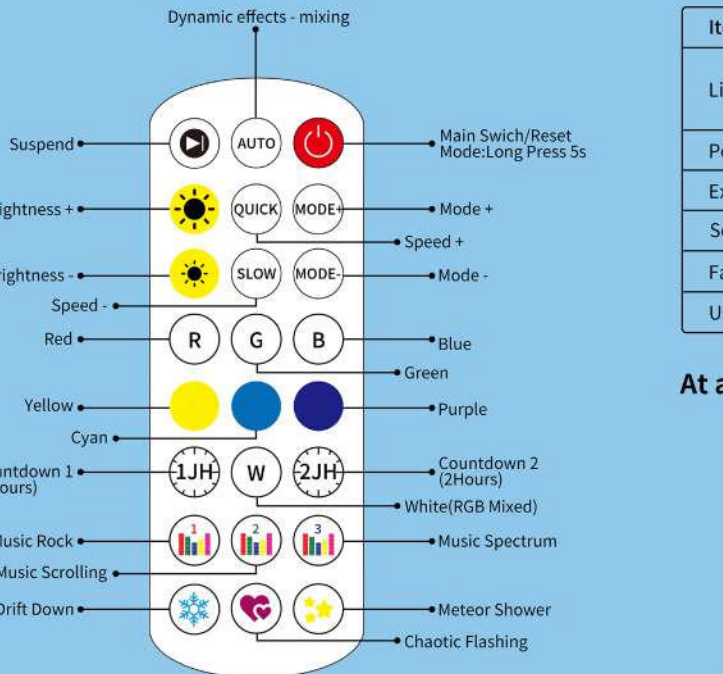
01 Instructions

Thanks a lot for choosing Smart Permanent Outdoor Lights! Please read the instruction manual carefully before using and keep it for future reference.

- This light is waterproof and suitable for outdoor use but is not recommended for use when immersed in water.
 - This product supports 2.4Ghz WIFI connection only.
 - Long press the remote control switch button 5 seconds.the light will flash and last for 3 minutes, they you can enter APP pairing Mode.
 - To prevent the light string from falling down,ensure it is installed with both the adhesive tape and the clips.
 - Tighten up the waterproof cap before using the light.
 - Do not allow Children to assemble and install this product.
 - Avoid installing this product near major heat sources or other dangerous sources.
- Provide professional after-sales service, if you have any questions, please feel free to contact us, we will help you solve the problem or provide new replacement.

Email: xuelanmu1121@126.com

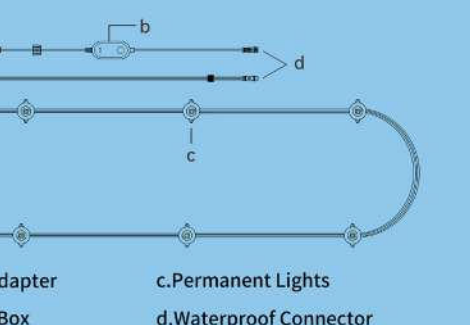
02 Remote Control



03 What You Get

Item	Quantity	
Light String	50ft = 3 Strings	100ft = 6 Strings
	150ft = 9 Strings	200ft = 12 Strings
Power Adapter	1	
Extension Cable	1	
Screw	1 bag	
Fasten Clips	2 bag	
User Manual	1	

At a Glance



04 Specifications

Power Input(Adapter)	100-240VAC 50/60Hz	
Power Input(Light)	DC24V 1A	DC24V1.5A
	DC24V 2A	DC24V2.5A
Length	50ft	100ft
	150ft	200ft
Light Displaying Technology	RGB+AI+W+W	
Working Temperture	"-20°to 45°(-4°to 113°F)	

Download and Install the App

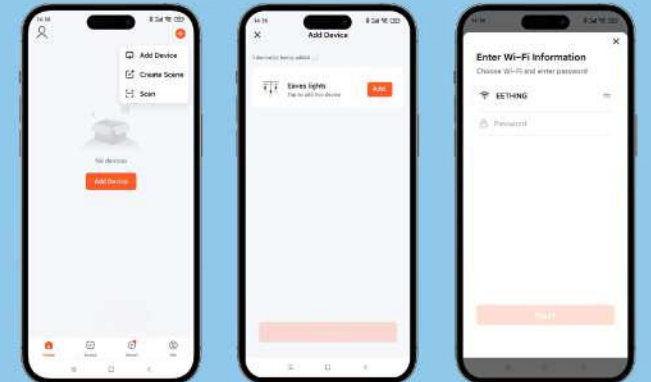
Search for "Smart Life"or "Tuya Smart" in the app store-download and install.You can also download the application by scanning the QR code.



Register/Login/Forget Passwora

05 How to Add Device

- 1.Turn on the light,default state is pending pairing; Buld lights up white and flickers,strip lights up red (Note:Reset if power on is not in pairing state
① : Remote control reset button long press 5S.
② : Controller reset button pressed 5 times continuously.)
- 2.Open the App and click the "+"sign in the upper rightcorner of the main inter-face.Make sure your bluetooth is on and your wifi signal is 2.4Ghz.
- 3.Click the device icon to add the device.
- 4.Enter the WiFi password,click Next and follow thesteps to connect.



Note:

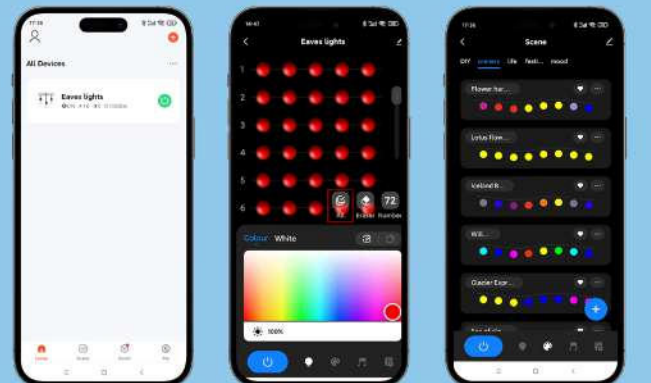
The reset mode of the equipment is to switch the power supply of the equipment three times(open -close-open-close-open).Power on the device then press and hold the power button on the remote for more than 5 seconds until the device light begins to blink and the device enters the to-be-assigned mode.At this point,go to the "Add Device"page on the APP,you can add the device.

06 Control Device

After the device is successfully connected,the paired device will be displayed on the main interface.Click to enter the corresponding control interface.

Note:

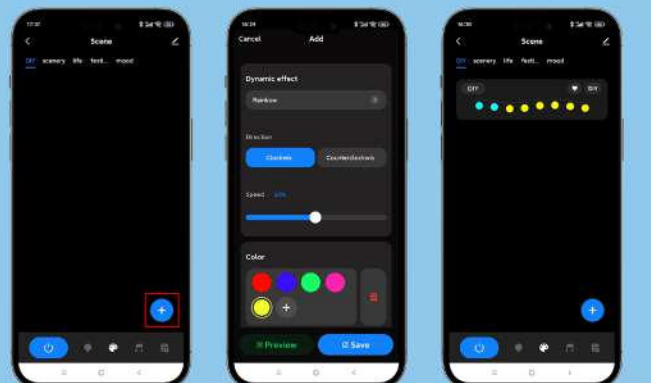
- ◆ When device is online,it supports quick operations.
- ◆ When the device is offline,"offline" is displayed,At this time,the device can not be operated,At this time,you can check whether the device has been successfully powered on.
- ◆ Click " ALL " - " Single " toggle.Customize the colors displayed by each led,creation endless color combinations,modes and effects for outdoor holiday lighting,year-round accent lighting and more.



07 Dynamic Modes

You can select a favorite dynamic effect from the scene interface,or"DIY"your de-sired dynamic effect.

- ◆ Click"Add+"in the top right corner to enter custom scene.
- ◆ You can DIY their own mode according to their preferences.
- ◆ You can add /delete /modify the color displayed and change the speed of color switching.
- ◆ If you are not satisfied,you can reset the settings.
- ◆ After you click "Save",you can see the saved dynamic effects in the scene interface.
- ◆ If you want to change the customizde scene ,click "DIY"to change or delete it.



08 Sync to Music Function

Enter the music mode and use any device to play music.The led string light will sync with the music.

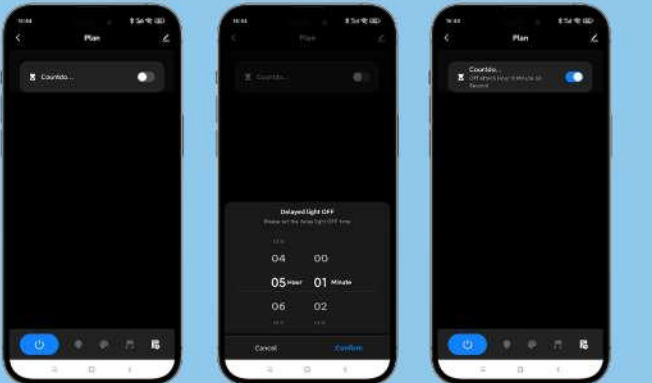
Note:

- ◆ The volume of the mobile phone is relatively small. it is better to use Bluetooth audio or local mode.
- ◆ You can select the phone mode or local microphone mode according to differ-ent use needs.
- ◆ You can click your favorite scene mode to let the led strip light show different music rhythm effects.



09 Timing Settings

Enter the setting interface and set the time for the light string to light up according to your requirement.



FCC Statement
This equipment has been tested and found to comply with the limits for a Class B digital device, pursuant to part 15 of the FCC Rules. These limits are designed to provide reasonable protection against harmful interference in a residential installation. This equipment generates, uses and can radiate radio frequency energy and, if not installed and used in accordance with the instructions, may cause harmful interference to radio communications. However, there is no guarantee that interference will not occur in a particular installation. If this equipment does cause harmful interference to radio or television reception, which can be determined by turning the equipment off and on, the user is encouraged to try to correct the interference by one or more of the following measures:
•Reorient or relocate the receiving antenna.
•Increase the separation between the equipment and receiver.
•Connect the equipment into an outlet on a circuit different from that to which the receiver is connected.
•Consult the dealer or an experienced radio/TV technician for help.
Caution: Any changes or modifications to this device not explicitly approved by manufacturer could void your authority to operate this equipment.
This device complies with part 15 of the FCC Rules. Operation is subject to the following two conditions: (1) This device may not cause harmful interference, and (2) this device must accept any interference received, including interference that may cause undesired operation.
RF Exposure Information
This equipment complies with FCC radiation exposure limits set forth for an uncontrolled environment. This equipment should be installed and operated with minimum distance 20cm between the radiator and your body.