



PnP IP/Network Camera

Quick Installation Guide

Pangolin series

VStarcam, IP Camera Expert

— **Hardware installation**

Please connect the IP camera and router via network cable.



And make sure that the Power indicator light of the router is on (yellow) and the Network Indicator light is flashing (green).

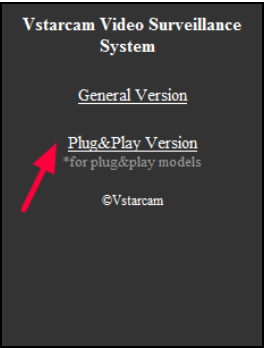
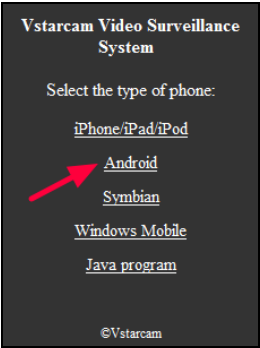
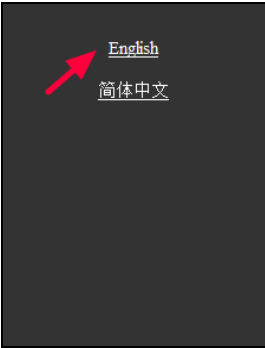


Please use the provided power adapter. Unauthorized power adapter may damage the IP camera.

Note: The IP camera can be reset to factory setting by pressing the reset button for 10 seconds. The reset button can be found on the bottom of the camera.

二. View via Android mobile phone

1. Install the P2PCam264 software: Visit the URL: <http://3g.gocam.so> via the phone web browser, and follow the instruction to download or scan the QR code to download the PnP version software.



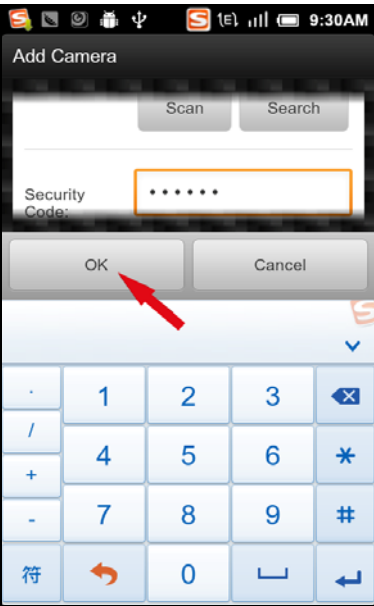
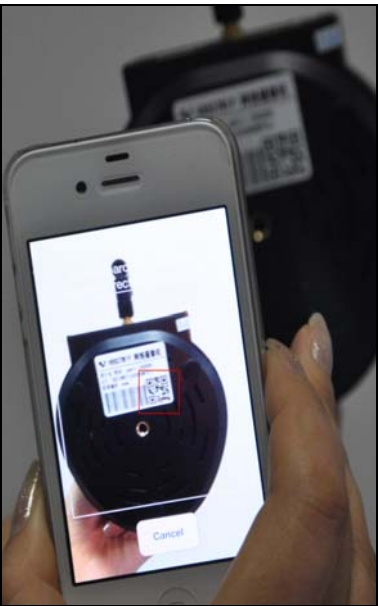
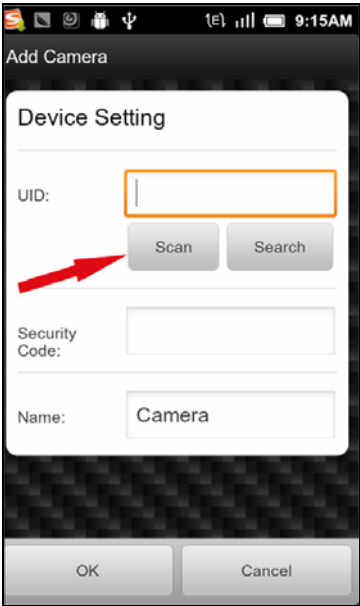
2. " P2PCam264" will be shown on the phone desktop after success installation.



3. Run the software and click "Add" to add cameras.

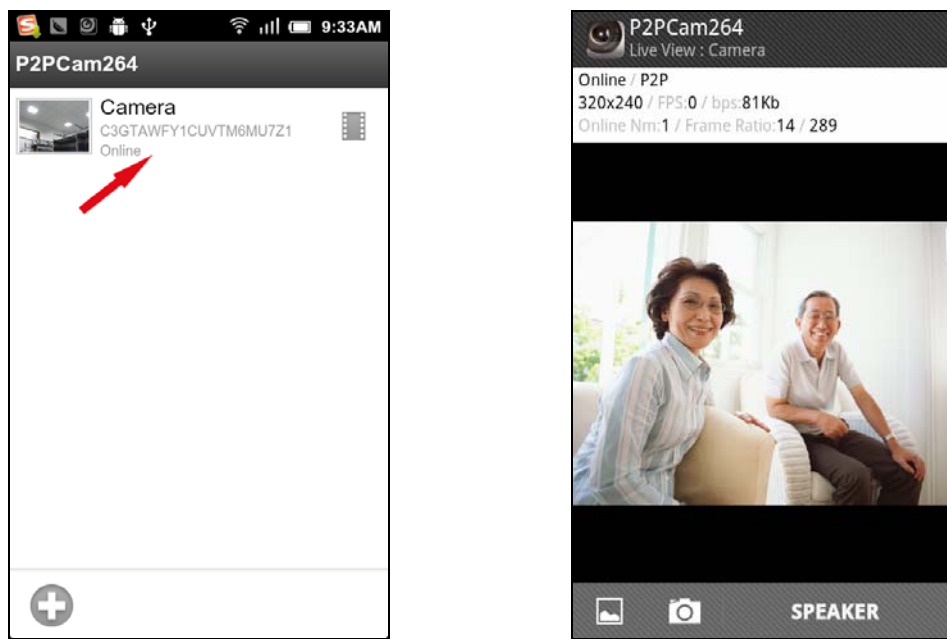


4. Click "scan" , and then point the phone camera towards the UID sticker.



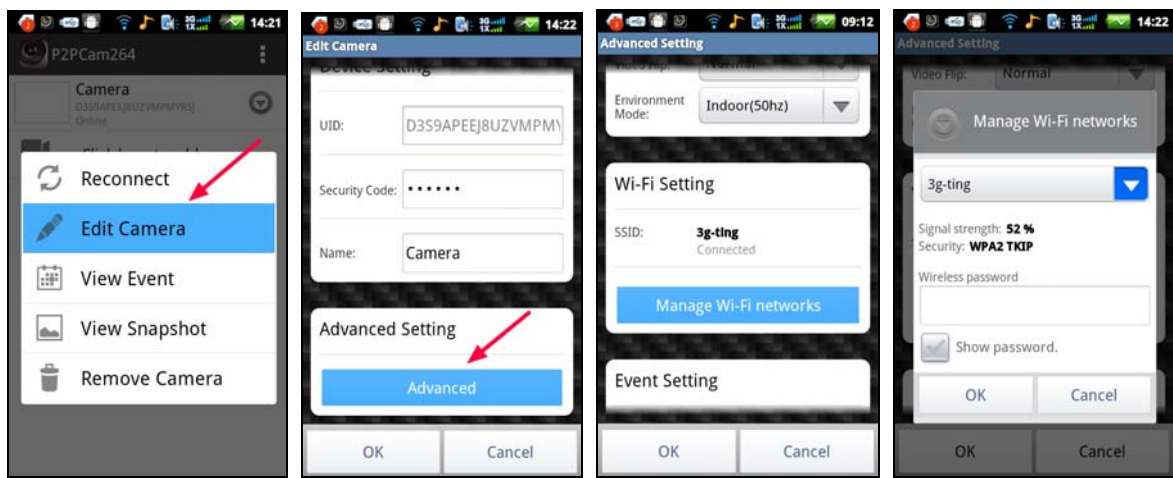
The UID can be found on the bottom of the camera or the warranty card. After a "beep" sound, the UID is scanned successfully. Also you can click "**search**" to add cameras in the LAN.
The default password is: 888888

5. Click "camera" to view the live video.



6. WIFI Setup

Click the arrow icon of the online camera to Edit Camera. Choose Advanced Setting/ WIFI, then the Router SSID list will pop up. Click the right router's SSID, and input WIFI password, click " Add". Then unplug the camera's network cable, the camera will restart, and auto connect to the selected WIFI.



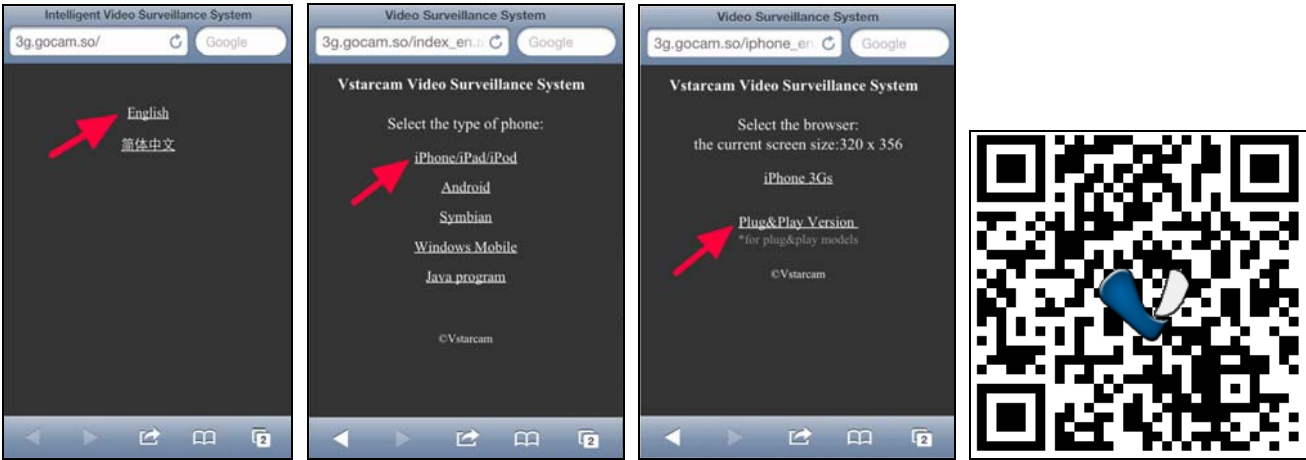
Notes:

- 1. If the camera has Pan/Tilt function, users can slide up and down the video screen to control the camera.
- 2. For more information, please refer to: <http://faq.vstarcam.com/en/pnp-android.html>

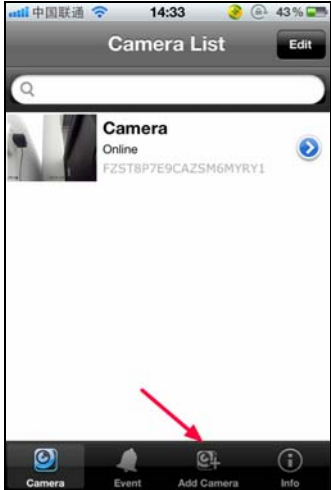


三. View via iPhone

1. **Install the P2PCam264 software:** Visit the URL: <http://3g.gocam.so> via the phone web browser, and follow the instruction to download or scan the QR code to download the PnP version software.



2. "P2PCam264" will be shown on the phone desktop after success installation.
3. Run the software and click "Add" to add cameras



4. Click "QR Code", then scan the camera's UID.



Point iPhone camera towards the UID (The UID can be found on the bottom of the IP camera or the warranty card). After a "beep" sound, the UID is scanned successfully. Also you can click "**search**" to add cameras in the LAN, or manually" Add camera", to input the camera's UID and password.

The default password is: 888888

5. Click "camera" to view the live video.



6. WIFI Setup

Click the arrow icon of the online camera, choose Advanced Setting/ WIFI, then the Router SSID list will pop up. Click the right router's SSID, and input WIFI password, click "Add". Then unplug the camera's network cable, the camera will restart, and connect the WIFI automatically.



Notes:

- 1. If the device has Pan/Tilt function, users can slide up and down on the video screen to control the camera P/T.
- 2. For more information please refer to: <http://faq.vstarcam.com/en/pnp-iphone.html>

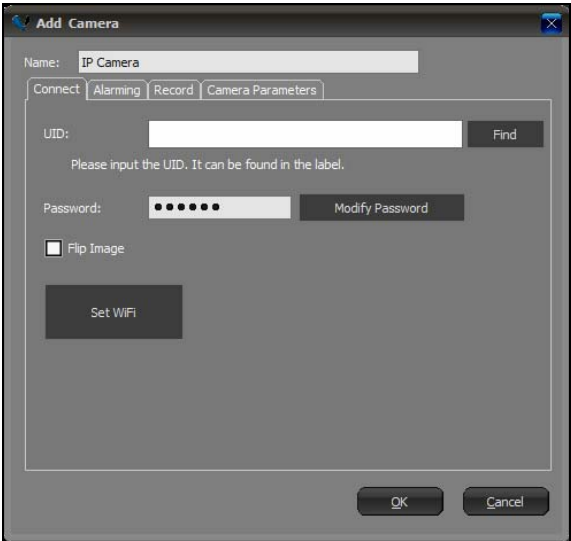
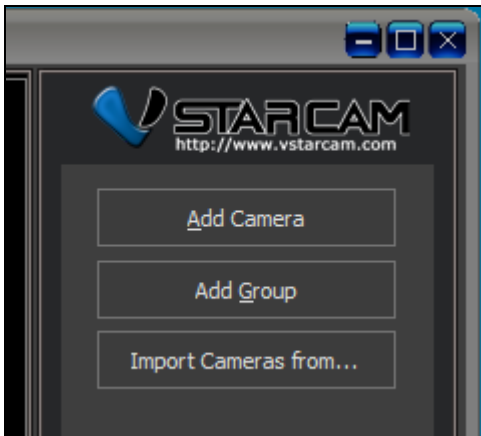


四. View via PC

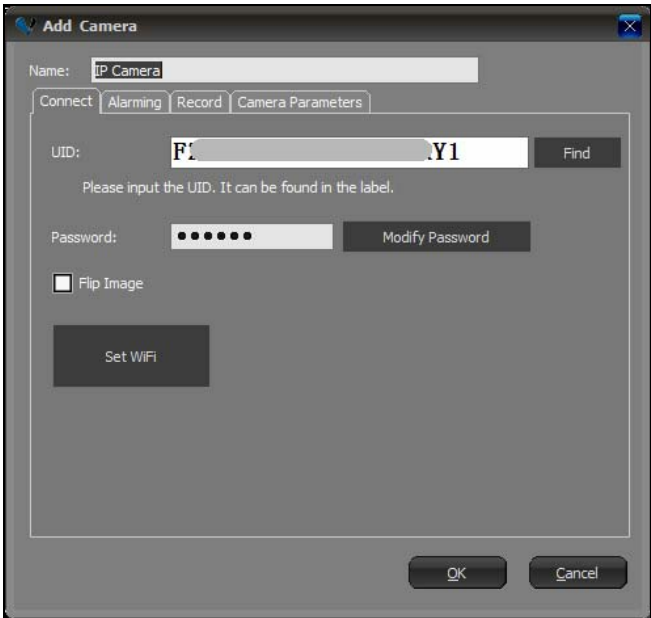
1. Install the Super Client Software from CD or download via:
<http://soft.vstarcam.com/application/app-jkp2p-vstarcam.exe>



- After installation this icon will be shown on the desktop, double click it.
2. Click "Add Camera", to connect camera in LAN or in WAN.

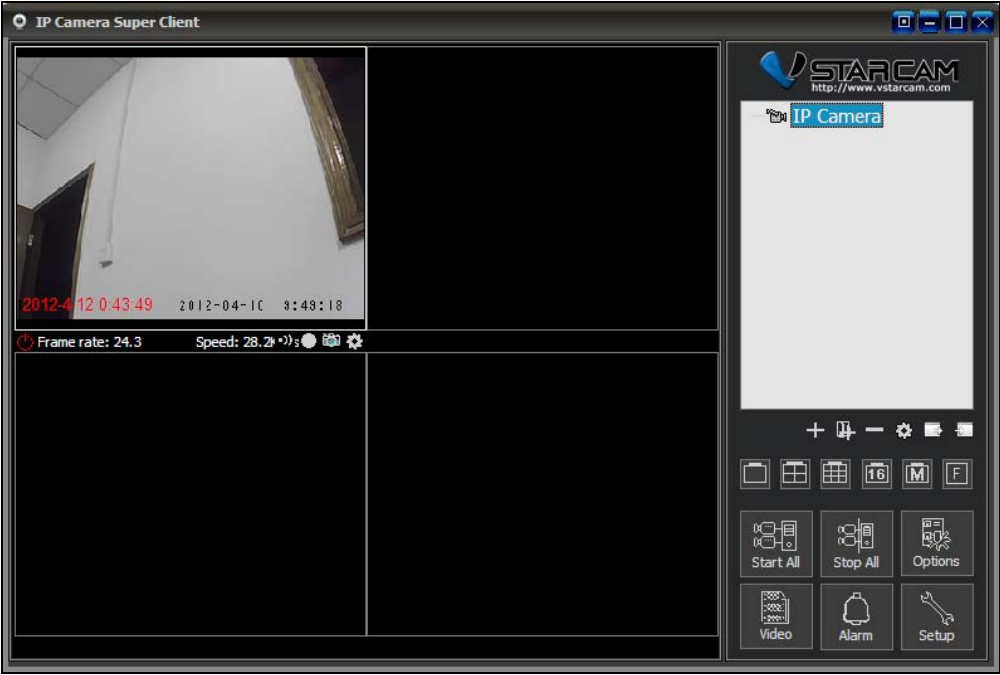


- Add cameras in LAN: click "Find" button and select the cameras.
- Add cameras in WAN: Input UID (UID can be found on the bottom of the camera or warranty card)
- Default password: 888888.
3. Click "OK" to confirm add camera.



"Set WiFi": can setup camera to be connected via WiFi.

4. Double click "IP Camera" icon to view the camera.



Note: For more information please refer to: <http://faq.vstarcam.com/en/pnp-jk.html>