



# Instruction Manual

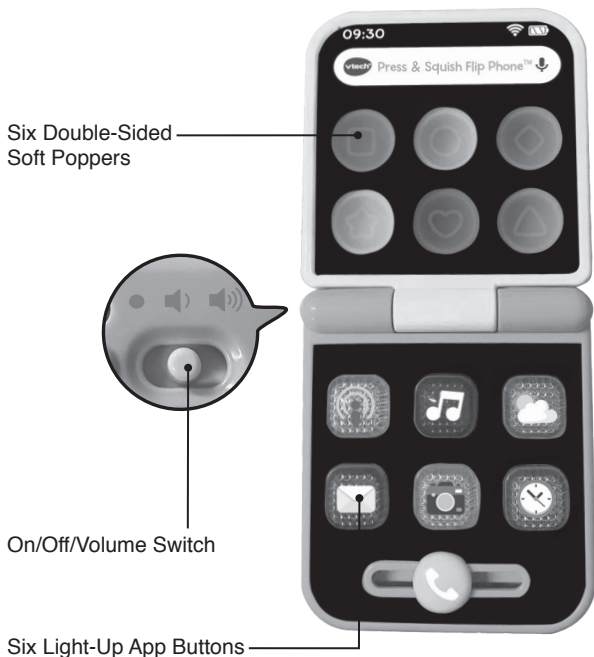
## Press & Squish Flip Phone™



# INTRODUCTION

Thank you for purchasing the **Press & Squish Flip Phone™**!

Flip open the phone for engaging lights, app content, songs and melodies! Close it to explore friendly animal poppers that are fun to press and squish.



# INCLUDED IN THE PACKAGE

- Press & Squish Flip Phone™
- Quick Start Guide

## WARNING

All packing materials such as tape, plastic sheets, packaging locks, removable tags, cable ties, cords and packaging screws are not part of this toy, and should be discarded for your child's safety.

## NOTE

Please save this Instruction Manual as it contains important information.

## ATTENTION

Pour la sécurité de votre enfant, débarrassez-vous de tous les produits d'emballage tels que rubans adhésifs, feuilles de plastique, attaches, étiquettes et vis d'emballage. Ils ne font pas partie du jouet.

## NOTE

Il est conseillé de sauvegarder ce manuel d'utilisation car il comporte des informations importantes.

## WARNING

Adult supervision is recommended.

- When playing with the poppers, ensure they are kept at an appropriate distance away from the eyes and face.
- Do not place, or attempt to launch anything on the poppers.

## ATTENTION

La supervision d'un adulte est requise.

- S'assurer que l'enfant joue à une distance appropriée des boutons Pop et loin de ses yeux ou ceux d'une autre personne.
- Ne pas poser d'objets sur les boutons Pop.

## PLEASE NOTE

This toy phone has reduced volume to adhere to safety regulations for close-to-the-ear toys.

# GETTING STARTED



## WARNING:

Adult assembly required for battery installation.  
Keep batteries out of reach of children.

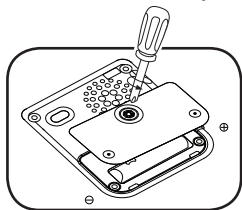


## ATTENTION :

Les piles ou accumulateurs doivent être installés par un adulte.  
Tenir les piles ou accumulateurs hors de portée des enfants.

## Battery Removal and Installation

1. Make sure the unit is turned **Off**.
2. Find the battery cover located on the back of the unit, use a screwdriver to loosen the screw and then open the battery cover.
3. Remove the old battery by pulling up on one end of the battery.
4. Install 1 new AAA (AM-4/LR03) battery following the diagram inside the battery box. (For best performance, alkaline batteries or fully charged Ni-MH rechargeable batteries are recommended.)
5. Replace the battery cover and tighten the screw to secure.



## IMPORTANT: BATTERY INFORMATION

- Insert batteries with the correct polarity (+ and -).
- Do not mix old and new batteries.
- Do not mix alkaline, standard (carbon-zinc) or rechargeable batteries.
- Only batteries of the same or equivalent type as recommended are to be used.
- Do not short-circuit the supply terminals.
- Remove batteries during long periods of non-use.




- Remove exhausted batteries from the toy.
- Dispose of batteries safely. Do not dispose of batteries in fire.

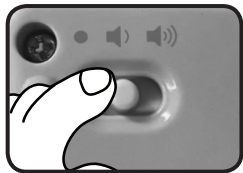
### RECHARGEABLE BATTERIES:

- Remove rechargeable batteries (if removable) from toy before charging.
- Rechargeable batteries are only to be charged under adult supervision.
- Do not charge non-rechargeable batteries.

## PRODUCT FEATURES

### 1. On/Off/Volume Switch

To turn the unit **On**, slide the **On/Off Volume Switch** to the **Low Volume**  or the **High Volume**  position. You will hear a song, phrases and sounds. To turn the unit **Off**, slide the **On/Off/Volume Switch** to the **Off**  position.



### 2. Automatic Shut-Off

To preserve battery life, the **Press & Squish Flip Phone™** will automatically power down after approximately 30 seconds without input. The unit can be turned **On** again by opening or closing the phone, or by pressing any button.

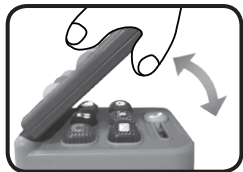
## NOTE

If the unit powers down during play, please install a new battery.

# ACTIVITIES

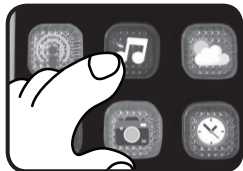
## 1. Flipping Phone

Flip the phone open to enter **App Mode**.  
Close the phone to enter **Animal Mode**.  
The lights will flash with the sound.



## 2. App Mode

When in **App Mode**, press the **Light-Up App Buttons** for fun app content, songs, melodies and to learn colors. The lights will flash with the sound.



## 3. Animal Mode

When in **Animal Mode**, press the **Animal Poppers** to learn animal names, hear animal sounds and call animal friends. The lights will flash with the sound.



## 4. Soft Poppers

When the phone is open, press the double-sided **Soft Poppers** for press and pop play.



# MELODIES

1. Polly Put the Kettle On
2. Grieg - Peer Gynt Suite No.1, Op.46 - 1. Morning Mood
3. Hickory Dickory Dock
4. Boccherini - String Quintet in E major, Op. 11, No. 5, G. 275: III. Minuetto
5. Toyland
6. Puccini - Nessun Dorma
7. Row, Row, Row Your Boat
8. Rossini - Il Barbiere di Siviglia: "Cavatina di Figaro"
9. MacNamara's Band
10. Verdi - Rigoletto, Act III - La donna è mobile

# SONG LYRICS

## Song 1

Red, orange, green and blue,  
Red, orange, green and blue,  
Red, orange, green and blue,  
And yellow and purple too!

## Song 2

Can you hear the phone ringing?  
The phone ringing? The phone ringing?  
Can you hear the phone ringing?  
I wonder who is calling?

# CARE & MAINTENANCE

1. Keep the unit clean by wiping it with a slightly damp cloth.
2. Keep the unit out of direct sunlight and away from any direct heat sources.
3. Remove the battery if the unit will not be in use for an extended period of time.
4. Do not drop the unit on hard surfaces and do not expose the unit to moisture or water.

# TROUBLESHOOTING

If for some reason the unit stops working or malfunctions, please follow these steps:

1. Turn the unit **Off**.
2. Interrupt the power supply by removing the battery.
3. Let the unit stand for a few minutes, then replace the battery.
4. Turn the unit **On**. The unit should now be ready to use again.
5. If the unit still does not work, install a brand new battery.

## IMPORTANT NOTE

If the problem persists, please contact our **Consumer Services Department** at **1-800-521-2010** in the U.S. or **1-877-352-8697** in Canada, or by going to our website at **vtechkids.com** and filling out our **Contact Us** form located under the **Customer Support** link. Creating and developing VTech products is accompanied by a responsibility that we take very seriously. We make every effort to ensure the accuracy of the information, which forms the value of our products. However, errors sometimes can occur. It is important for you to know that we stand behind our products and encourage you to contact us with any problems and/or suggestions that you might have. A service representative will be happy to help you.

## NOTE

This equipment has been tested and found to comply with the limits for a Class B digital device, pursuant to Part 15 of the FCC Rules. These limits are designed to provide reasonable protection against harmful interference in a residential installation. This equipment generates, uses and can radiate radio frequency energy and, if not installed and used in accordance with the instructions, may cause harmful interference to radio communications. However, there is no guarantee that interference will not occur in a particular installation. If this equipment does cause harmful interference to radio or television reception, which can be determined by turning the equipment off and on, the user is encouraged to try to correct the interference by one or



more of the following measures:

- Reorient or relocate the receiving antenna.
- Increase the separation between the equipment and receiver.
- Connect the equipment into an outlet on a circuit different from that to which the receiver is connected.
- Consult the dealer or an experienced radio/TV technician for help.

## **CAUTION**

Changes or modifications not expressly approved by the party responsible for compliance could void the user's authority to operate the equipment.

### **Supplier's Declaration of Conformity**

#### **47 CFR § 2.1077 Compliance Information**

Trade Name:	VTech®
Model:	5607
Product Name:	Press & Squish Flip Phone™
Responsible Party:	VTech Electronics North America, L.L.C.
Address:	1156 W. Shure Drive, Suite 200 Arlington Heights, IL 60004
Website:	vtechkids.com

THIS DEVICE COMPLIES WITH PART 15 OF THE FCC RULES. OPERATION IS SUBJECT TO THE FOLLOWING TWO CONDITIONS: (1) THIS DEVICE MAY NOT CAUSE HARMFUL INTERFERENCE, AND (2) THIS DEVICE MUST ACCEPT ANY INTERFERENCE RECEIVED, INCLUDING INTERFERENCE THAT MAY CAUSE UNDESIRE OPERATION.

CAN ICES-003(B)/NMB-003(B)

**Visit our website for more  
information about our products,  
downloads, resources and more.**

***vtechkids.com***  
***vtechkids.ca***

Read our complete warranty policy online at  
***vtechkids.com/warranty***  
***vtechkids.ca/warranty***

