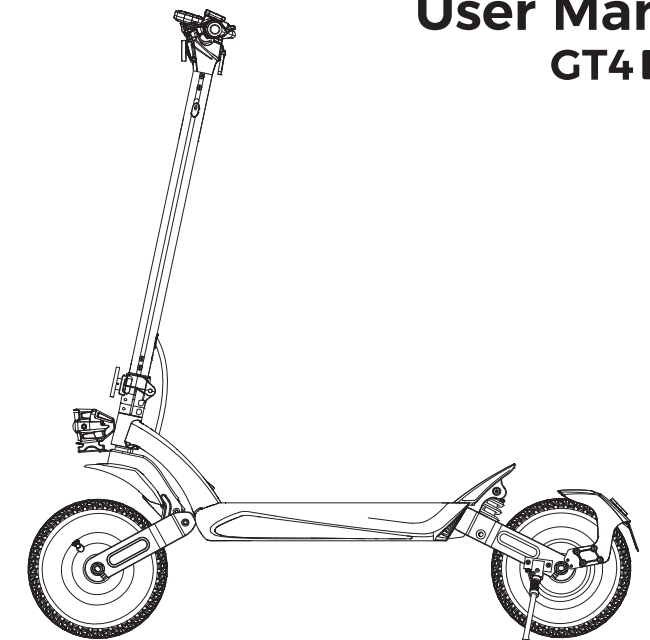




User Manual

GT4 UK



IMPORTANT! Read carefully and keep for future reference.

Illustrations of product, accessories, and user interface in the user manual are for reference purposes only. Actual product and functions may vary due to product enhancements.

A Package Contents



(1)



(2)



(3)



(4)



(5)



(6)

(1) Scooter

(2) Handlebar Mounting Bolts

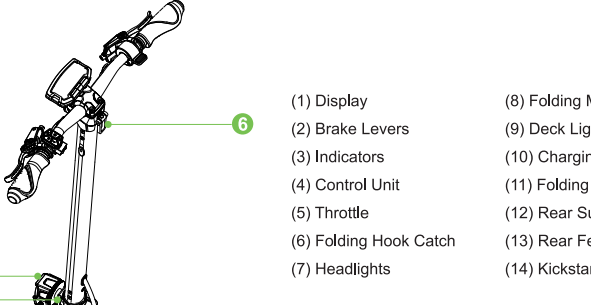
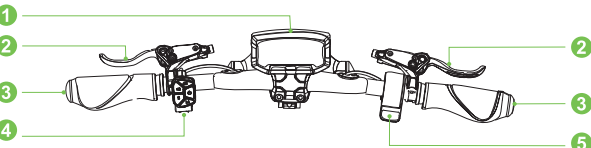
(3) U-Shaped Locking Hardware

(4) Tool

(5) Charger

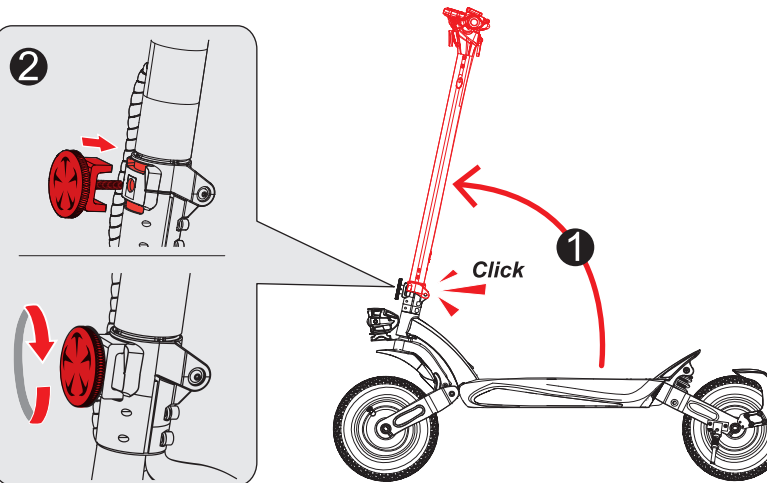
(6) User Manual + Safety Instructions

B Product Overview



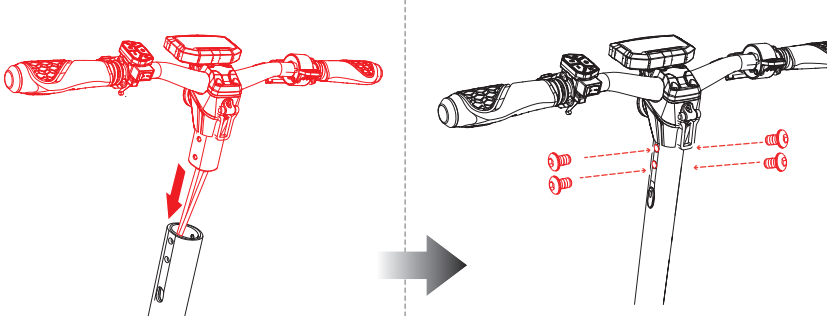
- (1) Display
- (2) Brake Levers
- (3) Indicators
- (4) Control Unit
- (5) Throttle
- (6) Folding Hook Catch
- (7) Headlights
- (8) Folding Mechanism
- (9) Deck Lights
- (10) Charging Port
- (11) Folding Hook
- (12) Rear Suspension
- (13) Rear Fender
- (14) Kickstand

C Assembly



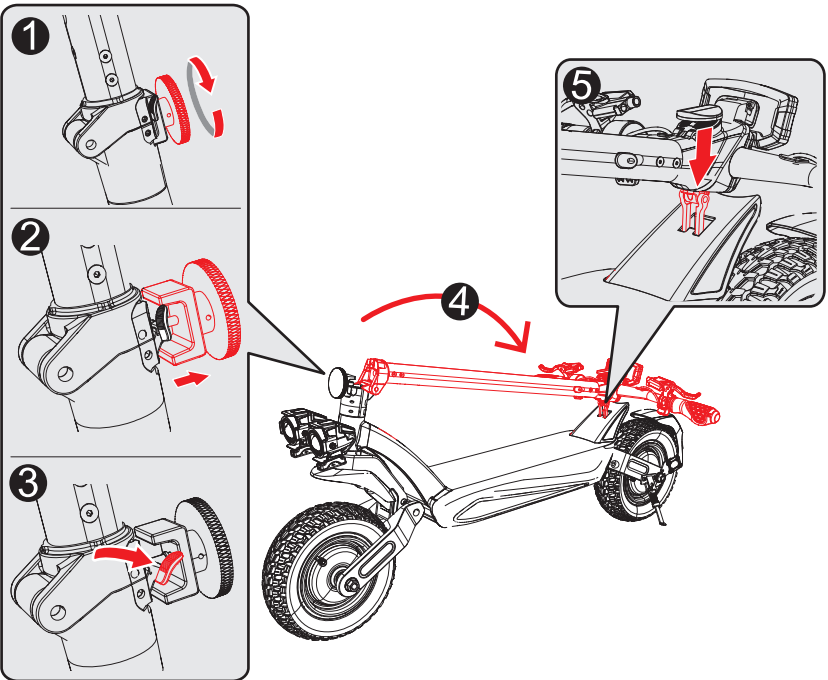
1. Raise the stem.
2. Align the U shaped hardware with the holes on the folding mechanism, and turn the knob clockwise to lock the stem in place.

D Scooter Folding



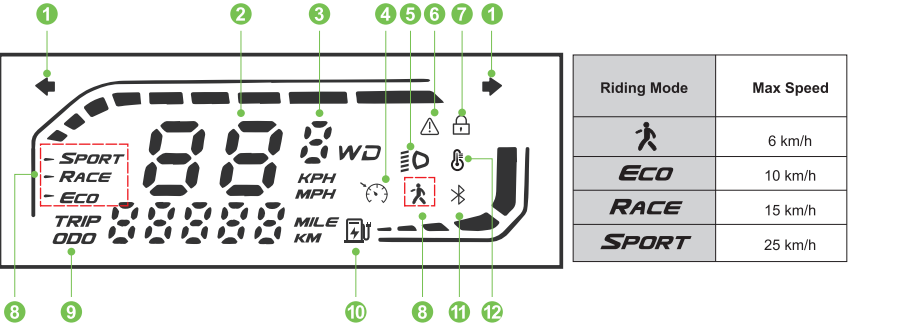
TIP

- Fully charge the battery before first use!
- Always check your tyres before a ride. If the tyres seem soft or spongy, pump them up to proper pressure.



E

Display



- (1) Indicators

(2) Real-time Speed / Error Code

(3) 1WD: Rear-Wheel Drive
2WD: Dual-Wheel Drive

(4) Cruise Control

(5) Headlight

(6) Brake Applied
- (7) Scooter Locked (via App)

(8) Riding Modes

(9) TRIP: Trip Distance
ODO: Total Distance

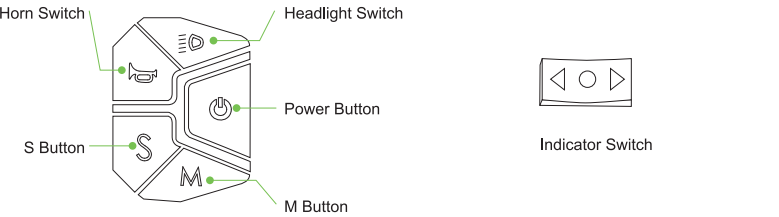
(10) Battery Level

(11) App Connected

(12) Motor Overheating Alarm

F

Basic Operations



- Power ON/OFF:**
Press and hold the **Power** button.

Lights ON/OFF:
Press the **Headlight** button to turn on/off the headlight, taillight, and deck lights simultaneously with the scooter powered on.

Rear/Dual- Wheel Drive:
Double-press the **"M"** button with the scooter powered on.

Select Riding Mode:
Press the **"S"** button with the scooter powered on.
- Imperial/Metric Units:**
Press the **"M"** button with the scooter powered on.

Left/Right Indicator:
Press the corresponding button on the indicator switch.
- NOTE:**
• The scooter will automatically power off after 10 minutes of inactivity.

G

Settings

- There are 3 setting items in the settings.
- P1:** Start Mode (P11 for non-zero start and P10 for zero start)
- P2:** Cruise Control (P20 for off and P21 for on)
- P4:** Odometer resetting
1. To enter the settings, hold the **"Power"** and **"Horn"** buttons simultaneously.

2. Press the **"Horn"** button to cycle through P1, P2, and P4.

• When selecting P1 or P2, press the **"M"** button to select P10 or P20; press the **"S"** button to select P11 or P21;

• When selecting P4, press and hold the **"M"** button to reset the odometer, i.e., total distance.

3. Press the **"Horn"** button to switch to the next setting item (changed setting items will be saved).

4. Press the **"Power"** and **"Horn"** buttons simultaneously or wait 5 seconds to save all the changes and return to the home screen.

H

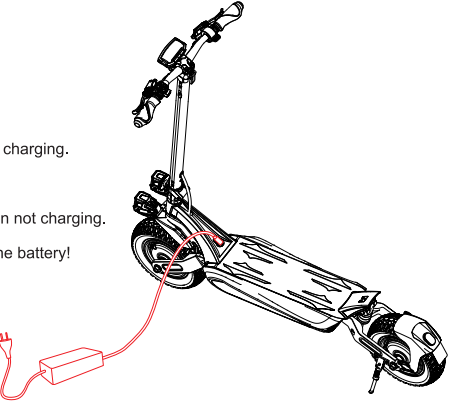
Error code

- The following are common error codes you may encounter. If you experience any of these or other error codes, contact us for support.
- | Error Code | Meaning |
|------------|-------------------------|
| E10 | Communication Fault |
| E14 | Throttle Fault |
| E15 | Brake Lever Fault |
| E16 | Motor Hall Sensor Fault |
| E50 | Over-Voltage Protection |

I

About Charging

- Red charger indicator: Charging
- Green charger indicator: Fully charged
- The scooter cannot be powered on while charging.
- Do not overcharge the scooter.
- Keep the charging port cover closed when not charging.
- Only use the original charger to charge the battery!



J

Specifications

- | | |
|------------------------|--|
| Model | GT4 |
| Unfolded Size | 53.1 x 25.2 x 53.1 in
(135 x 64 x 135 cm) |
| Folded Size | 53.1 x 25.2 x 22.8 in
(135 x 64 x 58 cm) |
| Weight | 73.6 lbs (33.4 kg) |
| Battery Capacity | DC 52 V, 18.2 Ah |
| Motor Power | 1200 W x2 |
| Range | 45–50 miles (70–80 km) * |
| Max Load Capacity | 330 lbs (150 kg) * |
| Recommended Age | 18+ |
| Charger Input & Output | AC 100–240 V, 50/60 Hz;
DC 58.8 V, 3 A |
| Charging Time | 6–7 h |
| Waterproof Rating | IPX4 |
- Disposal of Electrical and Electronic Equipment**
The crossed-out garbage can means that you are legally obliged to dispose of these devices separately from unsorted municipal waste. Disposal via the residual waste bin or the yellow bin is prohibited. If the products contain batteries or rechargeable batteries that are not permanently installed, they must be removed before disposal and disposed of separately as a battery.

Options for Returning Old Devices (EAR)
Owners of old devices can hand them over within the scope of the options for returning or collecting old devices that have been set up and made available by public waste disposal authorities, so that proper disposal of the old devices is ensured.

Data Protection
We would like to point out to all end users of waste electrical and electronic equipment that they are responsible for: deleting personal data on the old equipment itself to be disposed of.

CE WARNING
This appliance is not to be used by persons (including children) with reduced physical, sensory or mental capabilities, or lack of experience and knowledge, unless they have been given supervision or instruction concerning use of the appliance by a person responsible for their safety. Children should be supervised to ensure they do not play with the appliance.

Declaration of Conformity
For the full text of the EU Declaration of Conformity, visit the link: <https://www.isinwheel.co.uk/pages/declaration-of-conformity>

• About the range: Measured in a laboratory under 100% battery level condition. The range will differ depending on different factors, such as load, humidity, wind speed, and operation habits.

• The structure of this scooter is designed to support a maximum 330 lbs (150 kg) load. For the best riding experience, 70% of the maximum load is recommended.
- Scan to install the **"isinwheel club"** App

You will get

• Digital manual

• Step-by-step setup videos

• FAQs & troubleshooting

• Electronic Lock

Manufacturer: Shenzhen Xincheng Times Technology Co.,Ltd

Add: 104-105, Block C, Donghai Wang Building, No. 369 Bulong Road, Ma'antang Community, Bantian Street, Longgang District, Shenzhen

E-mail: support@isinwheel.eu

UK

REP

JunBright Ltd

Add: 51 Chalfon Street London, England, NW1 1HY

Contact: Shaopeng Yang

E-mail: junbrigh2024@gmail.com

Tel: +44 0756 1533298

UK_V2