

A172FGVR-BF2S Series

BASE MODEL A172400S-FG-VR-BF2S
BARRIER FREE, 14 GAGE STAINLESS STEEL,
ENHANCED VANDAL RESISTANCE, BI-LEVEL,
WALL MOUNTED DRINKING FOUNTAIN WITH
-BF2S SENSOR OPERATED BOTTLE FILLER

STANDARD FEATURES

Drinking Fountain

- Child or Adult ADA Compliant (when properly installed)
- 14 gage 304 Stainless Steel Apron, Basin and Front Access Panel
- Lead Free Stainless Steel, Anti-Rotation, Non-Squirt Bubbblers
- Vandal Resistant Screws
- Hanging Bracket provided
- Auto-Stop allows service of Cartridge and Strainer without Shutting off Water Supply

Bottle Filler

- ADA Compliant
- 100-Mesh Inlet Strainer
- 115v Plug-In Transformer
- Hands-Free Sensor Operation
- 1 GPM Laminar Flow
- 20 Second Maximum Run Time

SUGGESTED SPECIFICATIONS

Drinking Fountain

Model A172400S-FG-VR-BF2S is a self-contained, enhanced Vandal Resistant Bi-Level Drinking Fountain. Units shall be activated by flush mounted Chrome Plated Brass Pushbuttons using less than 5 pounds of force. Bubbblers shall be Lead-Free Stainless Steel with an integrally designed non-squirt feature and operate on water pressure range of 20-105 PSIG. **Unit shall be constructed from 14 gage type 304 stainless steel** and have an Integral Drain. Unit shall be certified to Public Law 111-380 (NO-LEAD) and NSF/ANSI/CAN 61. Optional -WF1 has a 1500-gallon capacity, has NSF/ANSI 42 & 53 certification and reduces lead content in the drinking water by 99%. Fixture meets ADA, ADA Standing Person, and ADA Child requirements when mounted appropriately.

Bottle Filler BF2S

BF2S is a 9 volt Sensor Operated Bottle Filler. Housing construction will be 18 gage Stainless Steel with a satin finish. Bottle Filler shall provide approximately 1 GPM flow rate with a Laminar Flow Spout to minimize splashing. Optional -BCD (Bottle Counter Display) indicates the quantity of 16 oz disposable Plastic Bottles saved from a landfill and also displays the Water Filter status.

Complies
with the
following
standards:



Federal
Public Law
111-380
(No Lead)

NSF/ANSI/CAN 61



Model A172400S-FG-VR-BF2S Shown
PATENT# 10,100,933



Maintenance Advantage®
Water Cooler by Murdock Manufacturing

"RATED FOR INDOOR USE ONLY"

MODEL:

(Must Specify)

- ☐ A172400S-FG-VR-BF2S Satin Stainless Finish with
Sensor Operated Bottle Filler

OPTIONS:

(Additional costs may apply.)

- ☐ - LOGO Customer Specified Logo / Graphics
☐ - RBL Reverse Bi-Level
☐ - BAT Battery Operated (N/A With Bottle Counter)
☐ - BCD Bottle Counter Display

ACCESSORIES:

(Additional costs may apply. Accessory items are packaged separately.)

- ☐ -CSC3 Concealed Support Carrier
☐ -WF1 1500-Gallon Capacity Water Filter ¹
☐ -WF3 3000-Gallon Capacity Water Filter ¹
☐ -SK9 Cane Detection Skirt for Upper Unit ¹
(Skirt finish provided to match model selected)

NOTES:

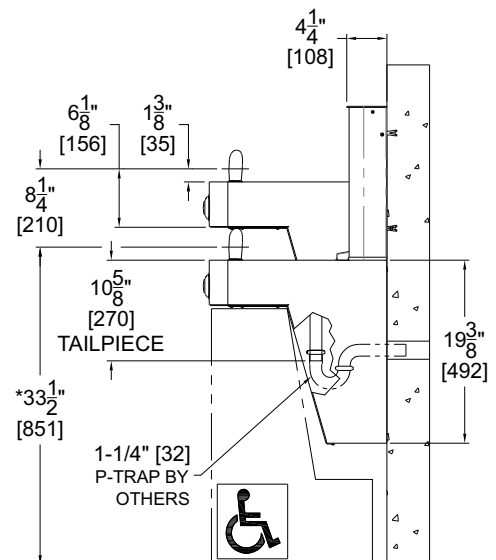
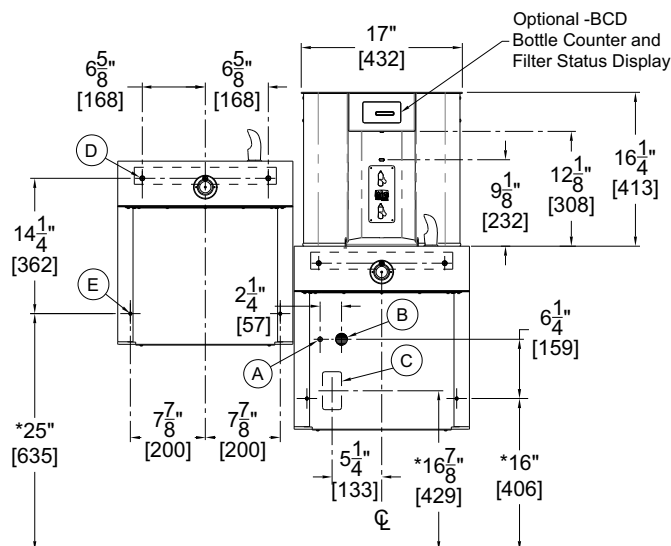
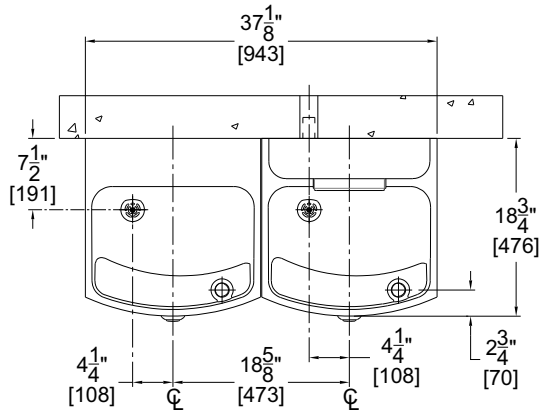
1- Refer to Supplemental Submittal Sheet for details.

Product Warranty

WARNING: Cancer and Reproductive Harm - www.P65Warnings.ca.gov

A172FGVR-BF2S Series

BASE MODEL A172400S-FG-VR-BF2S
BARRIER FREE, 14 GAGE STAINLESS STEEL,
ENHANCED VANDAL RESISTANCE, BI-LEVEL,
WALL MOUNTED DRINKING FOUNTAIN WITH
-BF2S SENSOR OPERATED BOTTLE FILLER



General Notes:

1. All dimensions are in inches [MM]
2. Allow 4 inches [102MM] minimum clearance per side for ventilation
- *3. Dimensions shown are for ADA adult height. Adjust vertical dimensions as necessary to comply with Federal, State & Local Codes
4. Stop Valve, P-Trap & Electrical Outlet not supplied
5. Important: Unit must be attached to wall with appropriate Anchor Screws

- A. 3/8" O.D. Supply Inlet
- B. Waste Outlet for 1-1/4" P-Trap, by others
- C. Electrical Service Rough
- D. Ø3/8" Hanger Bracket Punching, 3 places for Anchoring Hardware by others
- E. Ø1/4" Punching, 2 places for Anchoring Hardware, by others

IMPORTANT: Dimensions are shown for reference only. Refer to product Installation Manual for complete details prior to Rough-in.

SELECTION SUMMARY & APPROVAL FOR MANUFACTURING	Model Number & Options _____	Quantity _____	All dimensions are subject to manufactures tolerance of plus or minus 1/4" nominal and subject to change without notice. Murdock® assumes no responsibility for use of void or superseded data. Dimensions may change with the addition of optional accessories. Murdock® Mfg., Member of Morris Group International®. Please visit www.murdockmfg.com for most current specifications.
	Company _____		
	Contact _____	Title _____	
	Signature (Approval for Manufacturing) _____	Date _____	