



User Manual

Toilet Safety Rails

Model:FBL760149-2



CONTACT US FOR MORE TECH SUPPORT



1-262-258-0888



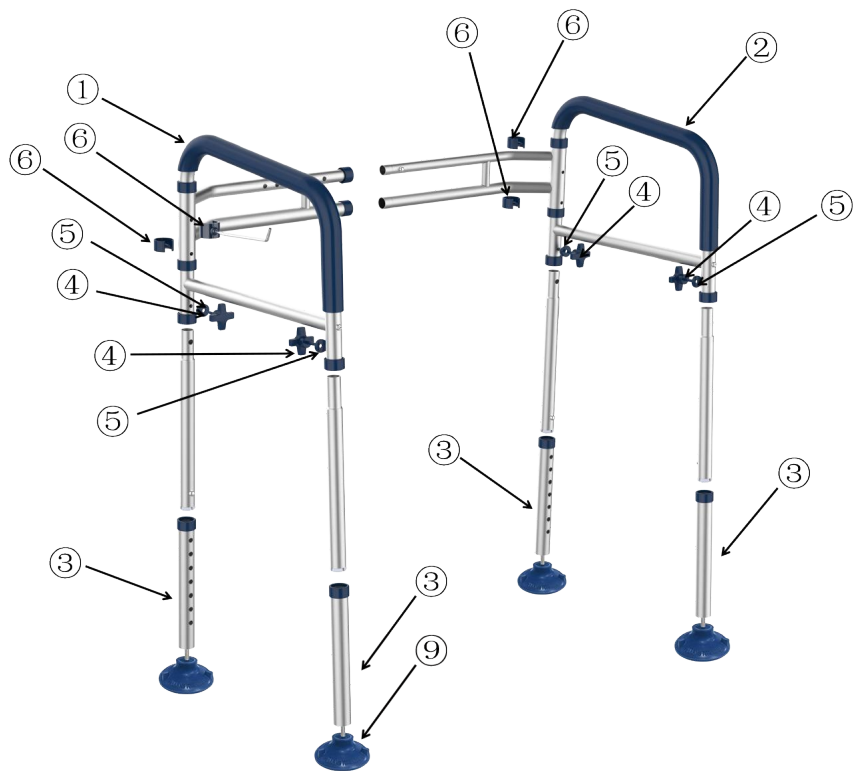
8:00-12:00&13:00-17:00Mon-Fri



support@loyoda.com



www.Loyoda.com



①



Hrod Welded Assembly×1

②



Hrod Welded Assembly×1

③



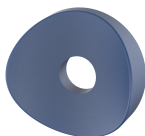
Leg×4

④



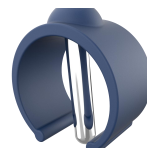
Set Screw×4

⑤



Screw Gasket×4

⑥



Proximity Card×4

⑦



Paper Holder×1

⑧



Storage Bag×1

⑨



Suction Cups×4

Installation

Step 1: Open the Handrests

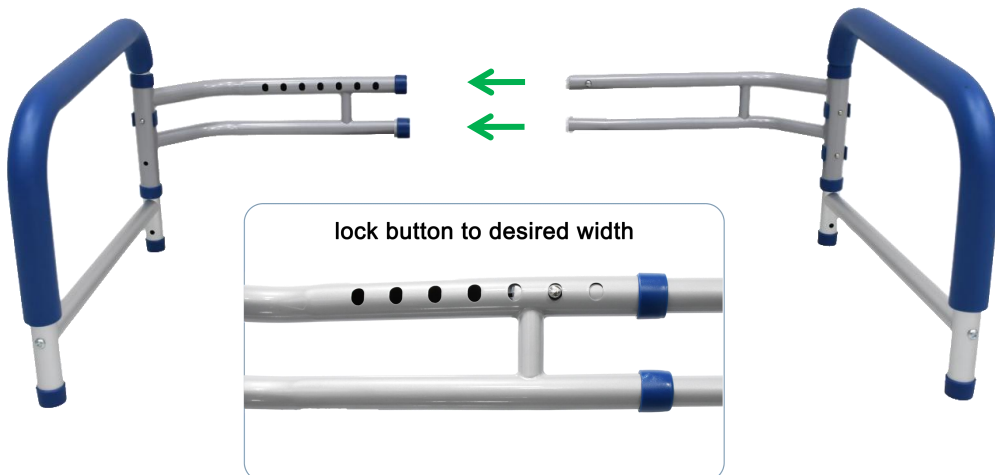
1. Open until both holes are exactly aligned



2. Press pins all the way

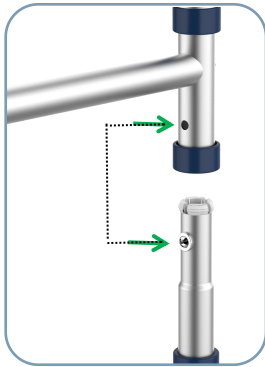


Step 2: Adjust the Width

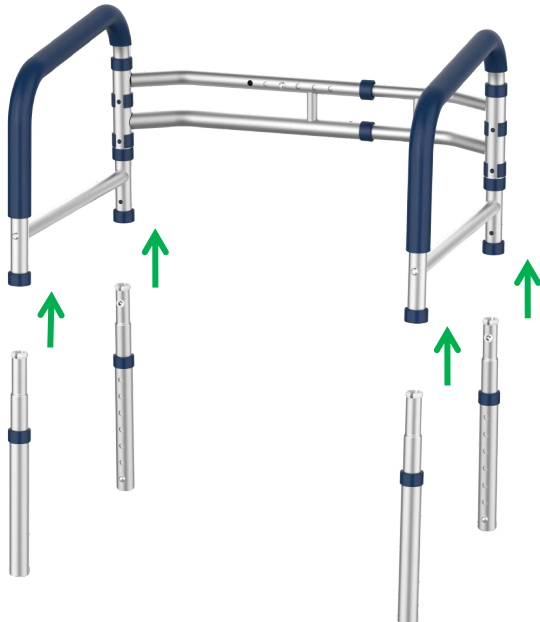


Don't worry, you will be able to easily adjust width after assembly too

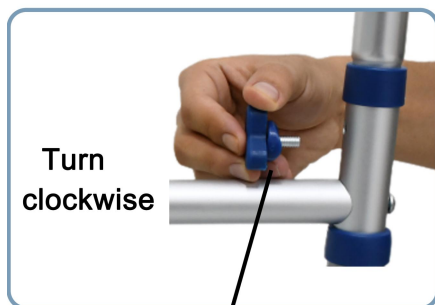
Step 3: Attach All Four Legs



Align the two holes
While inserting legs



Step 4: Secure All Four Legs

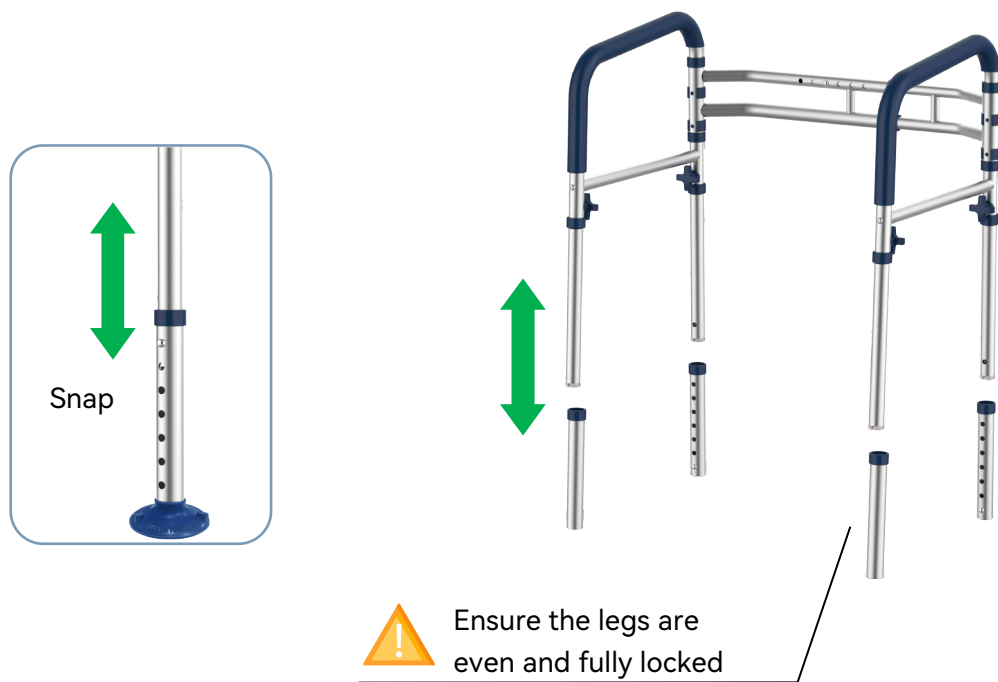


Turn
clockwise

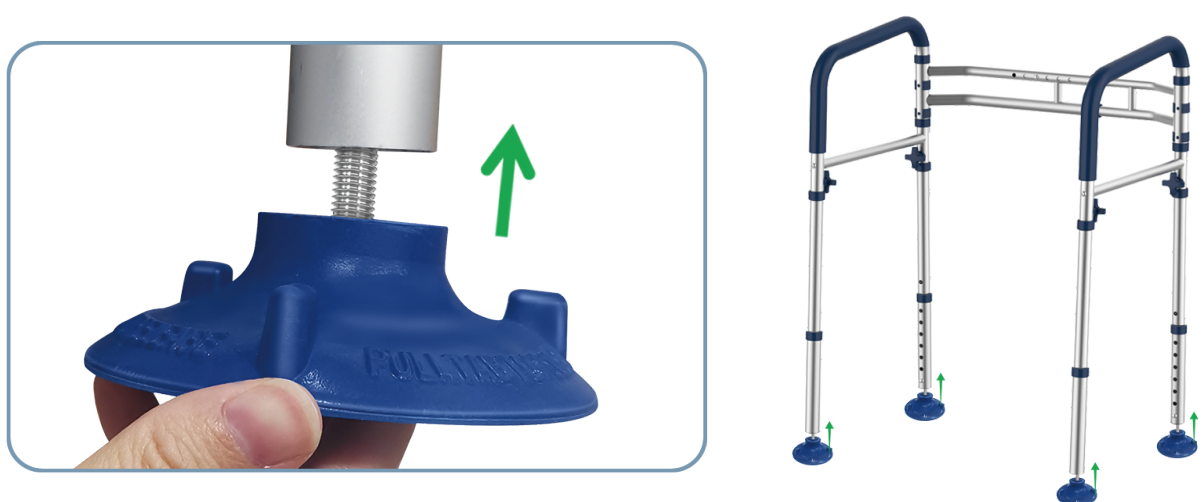
Flot port faces
the screw



Step 5: Adjust the Height



Step 6: Installation of foot mats



Specifications

Product Parameters	
Weight Capacity	350lbs
Product Weight	5.80 pounds
Package Dimensions	17.32×4.33×13.39 inches
Folded Dimensions	20.08×5.51×30.31 inches
Folding Method	Buckle
Color	Silver+Blue
Overall Frame Material	Aluminum Alloy
Frame Material Thickness	1.25mm
Armrest Material	Foam
Adjustable Height	23.23-29.13 inches - 7 levels
Adjustable Width	24.41-30.31 inches - 7 levels

1. Don't exceed the weight capacity - 350lb max.
2. Use on stable surfaces only.
3. Regularly inspect for signs of wear, damage, or loose parts.
4. Clean regularly using a mild detergent and warm water, rinse off any soap residue. After cleaning, dry thoroughly.
5. Before use, confirm with your healthcare provider that the product meets your specific needs. The following guidelines are not a substitute for medical advice.



Empowering Independence, Ensuring Safety



1-262-258-0888



8:00-12:00&13:00-17:00Mon-Fri



www.Loyoda.com



support@loyoda.com