

## 2-IN-1 STREAMING MIRROR

Baby Camera+Dash Cam



## USER MANUAL

MODEL: ZKCAMSPY S90



**EXTENDED  
WARRANTY**

\* If need to get extended warranty, please register by scanning the QR code.



# CUSTOMER SUPPORT

Item NOT As Describe?  
Item Damage or Defective?  
Missing Items or accessories?  
Problem with installation?  
Any issues what so ever.....

**CONTACT US BEFORE RETURNING THE ITEM**  
**WE WILL HELP YOU SOLVE ANY ISSUES**

## EMAIL US:

[help@zkcamspy.com](mailto:help@zkcamspy.com)  
*Usually response in 8hours*

Email to us directly by scaning the QR code.



## Message/Call US:

Message or Call us directly by scaning the QR code.



## INDEX

Important Tips.....	04
Box Contents.....	06
Apperance Overview.....	07
Screen Home-interface.....	08
Front Cam Instruction.....	09
Cam.....	09
Screen Gesture control.....	10
File Management.....	11
Cam Settings .....	12
System Settings.....	16
How to use WiFi.....	18
How to Use the APP: Viidure.....	20
Playback the Videos.....	21
Playback video on the Mirror.....	21
Playback video on the Mobile Phone.....	22
Installation .....	24
Installation Video.....	24
Wire connection Guide .....	25
Install Front Mirror.....	26
Install the Car Charger's Cable.....	27
Install the Baby Cam.....	29
Install the baby's Cable.....	31
FAQ(Frequent asked questions.....	33
Warranty and After-Sales.....	35
Thank for Your Purchasing.....	36

## Important tips

Please read and understand warnings & safety instructions before operating



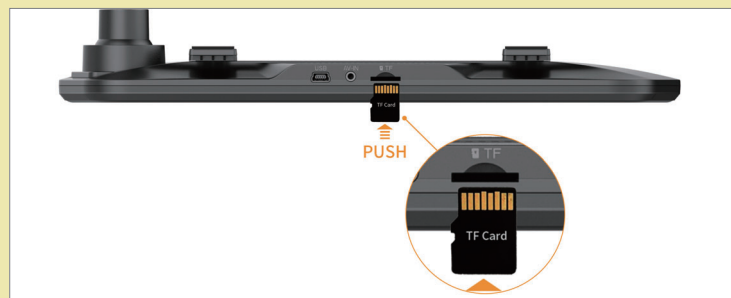
### IMPORTANT NOTES

#### **a. About WiFi&App**

- The WiFi is for file transfer only, can NOT be used for web.
- Please download the files into the phone before sharing it to social media apps

#### **b. insert SD card**

- A 64GB SD Card is inserted in the dash cam already.
- The SD card can only be inserted from one direction. Before insert it, Please make sure the direction is correct as the figure photo.





#### IMPORTANT NOTES

**c. Time Lapse video Mode** and **24H Park Monitor** will be triggered only when the Hardwired Kit is connected.



ZKCAMSPY Hardwire Kit:  
ASIN: **B0C2C2MFPJ**

#### **d. Battery & Charger**

- The dash cam battery(400mAh)is just to maintain and save settings. It should be connected to the car charger to get constantly powered, if the power is interrupted to the unit, it will shut down.
- Please use the original car charger provided to avoid fault or incompatibility.

#### **e. Cautions for High Temperature**

Don't leave this product where the temperature may exceed 70°C (160°F)for an extended period.

When using a sunshade, please do not place the dash cam between the windshield and sunshade, it may cause damage from heat buildup

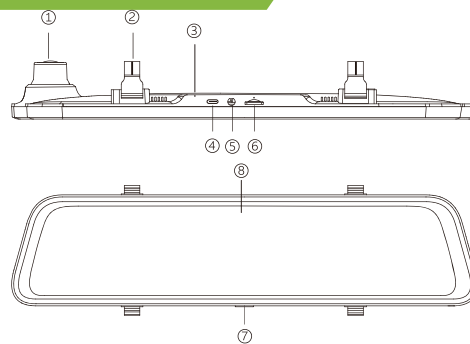
**Box Contents**

Tips: In addition to the original accessories in the package, we also provide separate hardwire kit(used for parking monitoring and replacement of car charger)



 1*2k Mirror Dash Cam	 1*Backseat Baby Camera	 1*Power Supply Cable With Car Charger
 1*User Manual	 1*Car backseat Baby Camera Cable	 64GB TF Card
 2*Rubber Straps For Fixing Front Camera	 5* Cable hiding clip	 1* screwdriver

## Appearance Overview



NO.	Name	Description
①	Lens	Front lens,record the front image of the car
②	Fasteners	The machine can be fixed with 2 straps
③	Reset hole	When the machine failure cannot be eliminated, you can try to restart the machine by clicking here
④	Type-C	Port for charging
⑤	AV-IN	Port used to connect the rear lens
⑥	TF card slot	Provide extensible storage(class 10 Max 128GB)
⑦	Power Button	Short press to wake and turn off the screen , long press to turn on and off the power
⑧	Display screen	10 inch touch screen display

## Screen Home-interface



NO.	Name	Description
①		Battery Status
②		SD Card Status
③		Back to previous step
④		Back to home interface
⑤		Date display
⑥		CAM:Access the front/baby cam
⑦		File Management:Access to manage the files
⑧		CAM SETTING:Access to make cam setting
⑨		SYSTEM SETTING: Access to make system setting
⑩		WiFi: Touch to turn on/off WiFi
⑪	S90-xxxxx	WiFi name of the device



## Front Cam Instructions

### Cam



Back to previous step



Lock video /photo manually



Back to home interface



Turn on /off audio recording



Start /Stop recording



Switch front /inside camera screen



Take photos

## Screen Gesture control

Swipe up and down on the left half of the screen to adjust the angle of view.



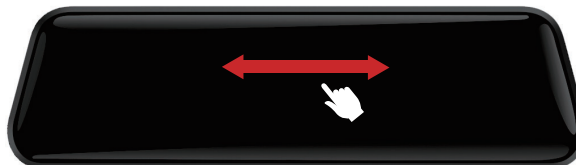
Adjust View Angle

Swipe up and down on the right half of the screen to adjust the screen brightness



Adjust screen brightness

Swipe left and right to switch between front and inside cameras.



Switch front/baby camera window

## File Mangement



**VIDEO\_FRONT:** The record video files of front camera

**VIDEO\_BABY:** The record video files of inside baby camera

**VIDEO\_LOCKED:** Video filed Locked manually or by G-sensor automatically.

**PHOTO:** The photo you take



Lock/Unlock the video file



Back to previous step



Delete



Back to home interface

## CAM SETTINGS



The CAM SETTINGS allows you to make the setting for the front camera and in car baby camera

**Resolution:** Allows to set the camera recording resolutions.

Options: ■ 2K(front)+1080P (inside baby camera)

■ 1080P(front)+1080P (inside baby camera)

**Loop Recording:** ■ 1MIN ■ 2MINS ■ 3MINS.

■ Loop Recording allows camera to continuously record loop by loop so it can delete the oldest video files automatically when the memory card becomes full so you don't have to manually delete them. This feature will split each video files to appropriate length based on your selection.

■ Please remember to download the important file in time.

**Time-lapse Video:** ■ OFF ■ 1S ■ 2S ■ 3S

Set the frame rate of the video . The camera captures 30 frames per 1s to merge them into a video by default(OFF).If you set Time-Lapse as 1S, the camera will capture 1 frame per 1s and merge them into a video. Selecting 2S indicates that the camera will capture 1 frame per 2S.

Time-lapse video is an auto function,If it's on:  
When car engine is started, the dash cam will record normal videos. When car engine is off,the camera will STOP the continuous video recording and it will go into the timelapse 1fps recording mode automatically.



#### IMPORTANT NOTES



**a.** Time-Lapse video is triggered by the Hardwire Kit only. If car charger is used, the time-lapse video will NOT be triggered

**b.** if Time-lapse video is necessary for you, please order the Phardware kit by ASIN: **B0C2C2MFPJ**

**Record Audio:** ■ ON ■ OFF

Allows to choose recording Audio or not when capture a video.

**G-sensor:** ■ OFF ■ Low ■ Middle ■ High

G-Sensor is a 3-axis impact gravitational sensor which is designed to detect physical and gravitational forces on the camera.

In the menu, you can set you OFF, or Low/Middle/High sensitivity to detect the shock or crash

When detect significant/sudden shock& crash is detected  
The current loop cycle length of video file will be locked which will NOT be deleted by loop cycle function.

***Tips for G-Sensor:***

- a.** when G-sensor is on, please check and format the SD card every 7days. In case of the SD card full or important files missed.
- b.** The sensitivity "LOW" is enough for daily usage.
- c.** When setting "Middle/ High", Many useless Locked files will make the SD card full easily

**Parking Monitor:** ■ ON ■ OFF

When the car is off,if the collision is detected,it will activate the emergency recording Mode and the video recorded will be locked and saved automatically.

**Date Stamp:** ■ ON ■ OFF

Turn on/off the date display in the recorded video

### ***Babycam Image Mirror***

■ OFF

■ Preview Image Mirror:

It will mirror the real-time view image from in car baby cam.

■ Recording Mirror

It will mirror the recorded video image from in car baby cam.

■ Mirror All

It will mirror the recorded video image and real-time view image from in car baby cam.

**HDR:** ■ ON ■ OFF

HDR improves the exposure by taking the combinations of over exposed and under exposed image into one robust wide range of lighting with higher depth image.

**License:** Setting the car license plate NO.

## SYSTEM SETTING



The SYSTEM SETTINGS allows you to make the setting for the system.

### **Screen Saver**

Set the time to enter sleep mode after a certain period of inactivity.(OFF/10S/30S/ 60S) If you need observe your kids in backseat, please choose “OFF”(The default setting”off”), if you choose 10S/30S/60S, the display screen will be automatically screen rest after 10S/30S/60S.

### **Key Voice**

Turn on/off the sound when tapping the touch display.

### **Speaker Volume**

Set the volume of the speaker for the camera, you can choose from Low, Middle , High and OFF

### **Boot Sound**

Turn on /off the sound when powering on/off the camera.



**Language**

Tap it to choose the language you need.

**Date/Time**

You can set the recording date and time at first using ,the recording video will stamp date and specific time in video.

**WiFi App**

Turn on/off WiFi by switch the button. Tap the" WiFi App" line, it will show the WiFi infos as below:

Connect WiFi App please refer to **Page 18-19**

**Format**

Tap to enter format option of the memory card .Please note, if you choose format,all videos include locked videos are been formatted.

**Restore Settings**

Tap to bring up the option of resetting the camera to the factory default.

**Customers Services**

Any problem when using, please feel free ask us via

[help@zkcamspy.com](mailto:help@zkcamspy.com)

or call whatsapp:



## How to Use WiFi

### Download APP:

Please Search in Google Play or Apple Store for free APP **"Viidure"** to download APP

Or Scan the QR code as below to download.



ISO/APP Store

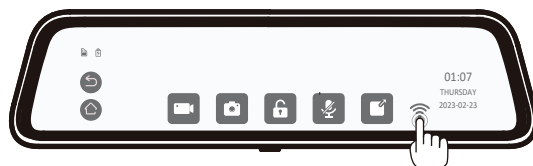


Android/Google Play


### Turn on the Mirror's WiFi:

**Method 1:** Enter "SYSTEM SETTINGS", Find "WiFi APP", tap the button on the right side from red to blue. (Red means WiFi off, Blue means WiFi is on)

**Method 2:** Turn on the WiFi hotspot on the mirror camera, Tap the WiFi icon on the screen to turn on the WiFi hotspot.



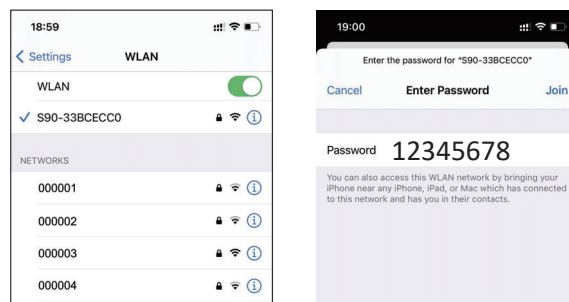
WiFi On:   
WiFi Icon Green

WiFi OFF:   
WiFi Icon Grey

### **Connecting WiFi**

Open the WiFi connection settings on the mobile phone, and search the WiFi name “**S90-\*\*\*\*\***”, enter and input password to connect (password:**12345678**).

Please Note it is open “WiFi” to connect, not “Bluetooth”.



#### **IMPORTANT NOTES**

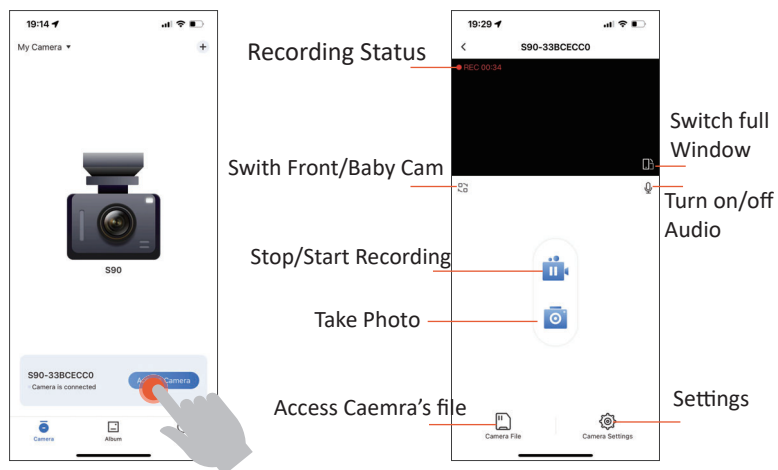
The WiFi can not be used for scanning web  
By WiFi, you can download the mirror camera's file to your Phone.

## How to Use the APP: Viidure

After WiFi is connected, open the APP

By the APP you can download the files from the Mirror camera

By the APP, you can make general settings for the Mirror Camera



**When you connect the WiFi and operate the APP, then you can not operate mirror cam by touch the screen**

## Playback the Videos

There are 3 methods can playback the videos.

**Method 1:** Take off the SD card and check the video files on the PC

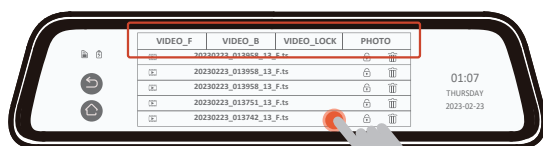
**Method 2:** Playback the video on the mirror

**Method 3:** Playback it on the Mobile Phone

### Playback video on the Mirror:



Access to the "File Management"



Choose the video file to play

VIDEO F-----The record video files of front camera

VIDEO B-----The record video files of inside baby camera

VIDEO LOCK---you lock video manually or you turn on the G-sensor, the camera automatically record video when the car shakes violently

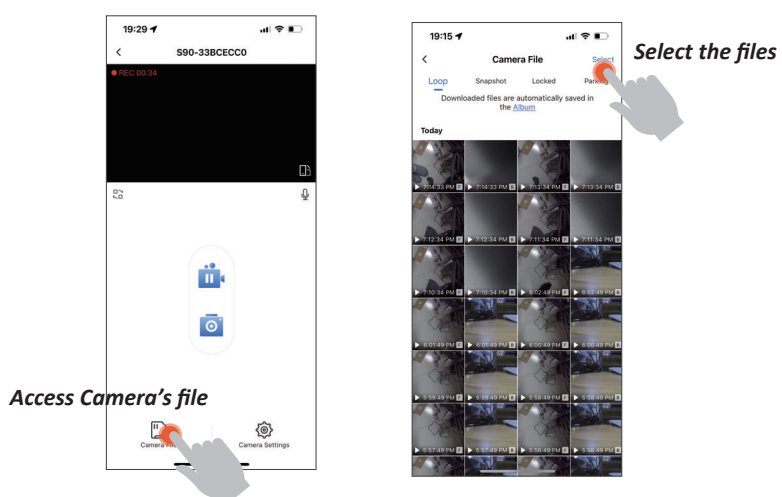
PHOTO-----the photo you take

### ***Playback video on the Mobile Phone:***

Open the Mirror's WiFi(Please refer to page 18 )

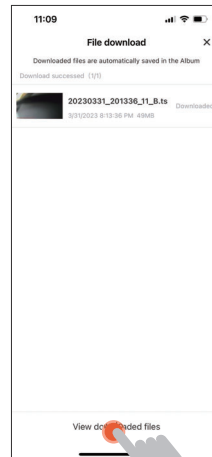
Connect the phone with the Mirror's WiFi(Please refer to page 19 )

Operate the APP "Viidure"





*Download the the selected file*



*Playback the downloaded files*

**Before playback the video files, please kindly download the video files.**

## ***Installation***

### ***Watching Installation Video***

Thank you for your purchasing ZKCAMSPY Product.  
Before starting installation, please watch videos and  
note the tips attached.

#### ***Install Video:***

Scan the QR Code by the mobile  
phone to check the installation  
video in YouTube.

***Or***

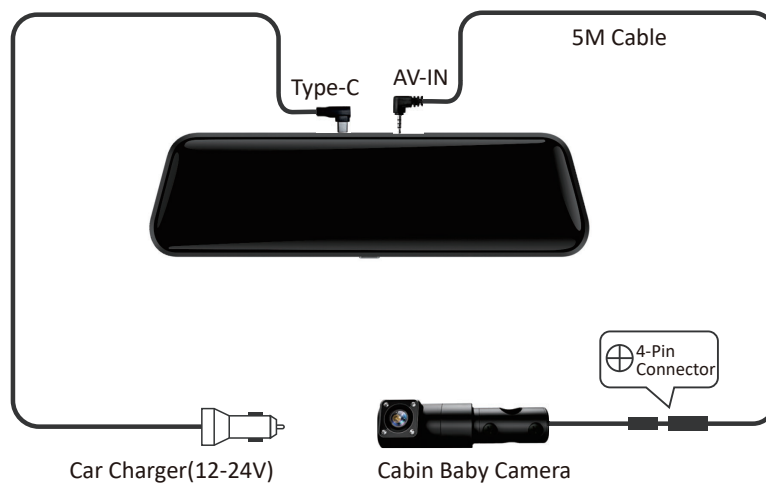
Search the link below:

<https://www.youtube.com/watch?v=IYRvIZgvSMI>





### **Wire connection Guide**

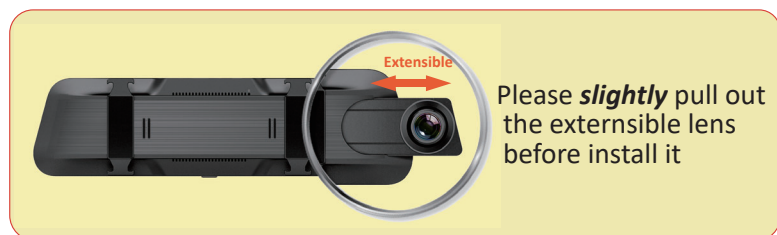
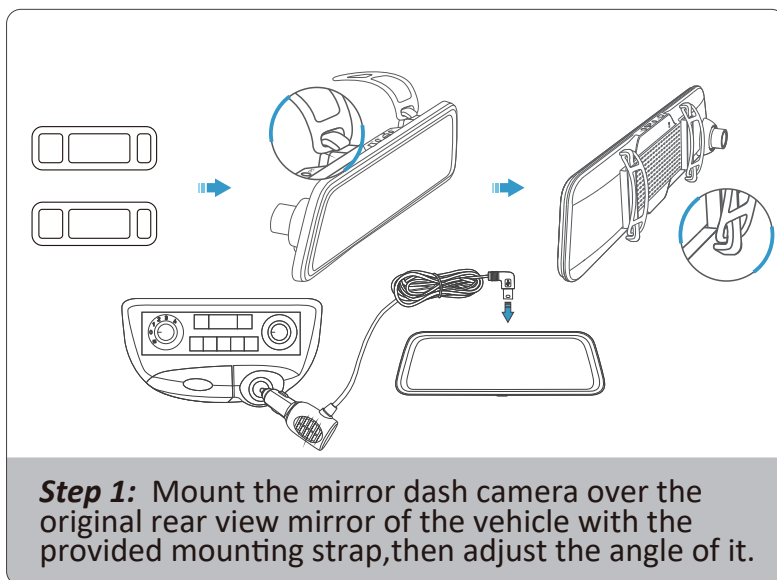


#### **IMPORTANT NOTES**

**Please make sure all the interface is connected correctly and tightly.**

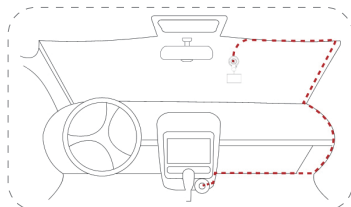
**Please contact us if any help needed**

### ***Install Front Mirror***

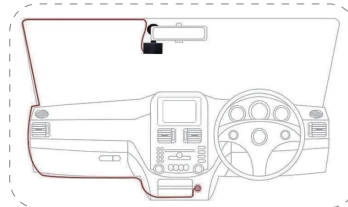


**Step 2.** Connect the car charger to camera's Type-C port and Wire the cable according to the overall wiring diagram below

Wiring image



Wiring Method A



Wiring Method B

**!** Please use the original car charger provided to avoid fault or incompatibility.

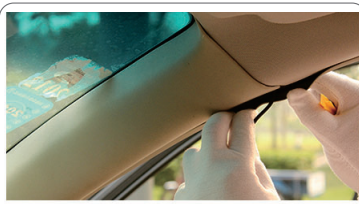
### **Install the Car Charger's Cable**



**a.**hide the cable into to the top panel as the photo



**b.**Break the side panel slightly and insert the cable,please be careful if there is a **airbag**



**c.** then insert the cable to the door's sealing tape.



**d.** insert the cable according to the door's sealing tape.



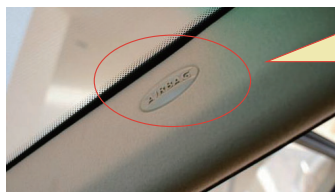
**e.** insert the cable according to the door's sealing tape.



**f.** connect the car charger to Cigarette lighter



#### IMPORTANT NOTES



If your vehicle has side curtain airbags please be very careful when running any cables along your vehicle windows. Ensure you are not running Cable past any of the airbags as this can prevent the airbags from deploying



Please make sure the cigarette lighter is clean for connection.

Please check the car charger's red indicator whether is on.

### *Install the Baby Cam*



**1.** Find this accessories



**2.** Choose the install position



**3.** Fix the camera on car's headrest rod as picture



#### **IMPORTANT NOTES**

Please keep the arrow facing upwards to install. If not, the screen image will be reversed.



**4.** Fix another part on it.

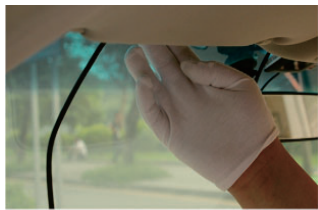


**5.** Tighten the two screws

**6.** Hidden the cabin baby cam according to the overall wiring diagram as below.



### Install the baby's Cable



**a.**hide the cable into to the top panel as the photo



**b.**Break the side panel slightly and insert the cable,please be careful if there is a **airbag**



**c.** then insert the cable to the door's sealing tape.



**d.**keep inserting the cable to the door's sealing tape until close to the trunk



**e.**Connect the camera with baby camera cable(Align the two arrows to insert well)



#### IMPORTANT NOTES

Please kindly note to align the two arrows to connect.





**f.** Connect the baby camera cable on mirror camera AV port

If necessary, The cabin camera can separate from the screw bracket part.



**1.** Pay attention to the small square hole and rotate the cam part.



**2.** Rotate the camera until plastic part could be shown as in the picture.

If you need to restore, please align the square hole with the plastic part on cam to push in to fix it.



**3.** Now you can pull out the camera from screw bracket.



## FAQ

### FAQ of SD Card

#### ***Why the memory card can't be read and shows "SD card error"?***

- Solution 1: Format the SD card manually;
  - Solution 2: Reset the dash cam by push the reset button;
- If the solutions are not workable, please contact the After-Sales team to get new SD card.

#### ***Why the SD card full?***

There are many locked files which can not be overwritten by the loop recording. Please format the SD card to delete the locked files

### FAQ of WiFi

#### ***Why the WiFi Disconnect Automacially?***

Because the WiFi can not be used for web, and the phone will keep search the web, so sometimes, the phone will switch into other WiFi.

#### ***Why can not operate the mirror in the screen and in the App at same time?***

There will be a conflict if you make a different setting in the mirror and app

***Why the WiFi can not be used for web?***

The mirror's wifi is spot to spot, which used for file transfer and app control.

***FAQ of Dash Cam******Why the camera always ask me to format?***

When the locked videos are full, then it will ask you to format. If you don't want to format, then you can turn off the G-sensor and parking monitoring function.

The videos will not be locked. In normal, it will ask you to format in 1-2 weeks if you use these functions.

***Why the dash cam keep turn on and off?***

- Please check the car charger connection, sometimes there are something in the cigaretter lighter which will disturb the power.
- Please turn off the Parking Monitor, when detecting shake, the dash cam will auto start
- Please format the SD card. When there are many locked videos in the SD card, the loop recording function can not overwrite it. Then the dash cam will keep turning on/off

If the problem is not solved, please contact us for refund/replacement

### **FAQ of Time-Lapse Video**

#### ***Why the Time-lapse video need to work with Hardware Kit***

The time-lapse video needs a constant power supply from car battery, so it needs a hardwire kit to connect with car battery directly.

### **Warranty & After-Sales**

Thanks for purchasing ZKCAMSPY S90.

Deafult Warranty is 1year.

If need to get extended warranty,  
please register by scaning the code



Our after sales team are available



Scan to email US:  
[help@zkcamspy.com](mailto:help@zkcamspy.com)

*Scan the  
QR code to  
contact US*



Scan to text/ call US  
in WhatsApp

## **THANK YOU FOR PURCHASING** 😊

Thank you for purchasing ZKCAMSPY S90 .

We hope you find your new S90 useful and fun to use. If you are having difficulties setting it up, please email us at [help@zkcamspy.com](mailto:help@zkcamspy.com). 99% of all setup problems can easily be resolved and should be able to get you up and running in no time.

In the unlikely event that we can't help, we're always happy to provide full, hassle-free refund. We just want our customer to be happy and proud to use our product!

There is no perfect product, however we will always do our best to provide perfect customer service to you.

A Great care was taken while creating this user manual. It is possible that there are minor typos are there. If you find any mistakes or suggestions, please do let us know so we can correct it.

We also frequently update other great contents that is very useful to our customers.

#### FCC WARNING

This device complies with part 15 of the FCC Rules. Operation is subject to the following two conditions: (1) this device may not cause harmful interference, and (2) this device must accept any interference received, including interference that may cause undesired operation. Any changes or modifications not expressly approved by the party responsible for compliance could void the user's authority to operate the equipment.

NOTE: This equipment has been tested and found to comply with the limits for a Class B digital device, pursuant to Part 15 of the FCC Rules. These limits are designed to provide reasonable protection against harmful interference in a residential installation. This equipment generates, uses and can radiate radio frequency energy and, if not installed and used in accordance with the instructions, may cause harmful interference to radio communications.

However, there is no guarantee that interference will not occur in a particular installation. If this equipment does cause harmful interference to radio or television reception, which can be determined by turning the equipment off and on, the user is encouraged to try to correct the interference by one or more of the following measures:

- Reorient or relocate the receiving antenna.
- Increase the separation between the equipment and receiver.
- Connect the equipment into an outlet on a circuit different from that to which the receiver is connected.
- Consult the dealer or an experienced radio/TV technician for help.

To maintain compliance with FCC's RF Exposure guidelines, This equipment should be installed and operated with minimum 20cm distance between the radiator and your body: Use only the supplied antenna.



Made in China