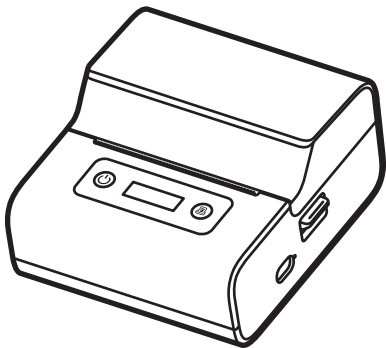


User Guide

M221



1. Product Introduction

1.1 Packing List



Printer
×1



Quick Start Guide
×1



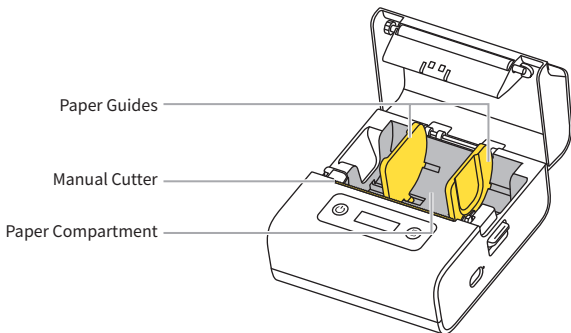
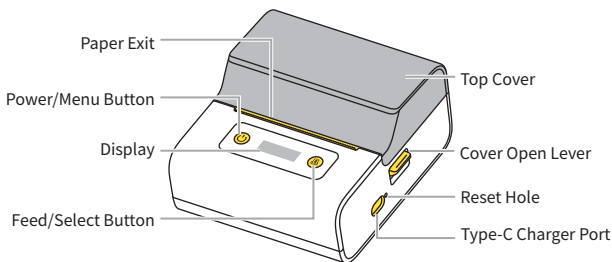
Type-C Cable
×1



100-Pc 40*30 mm
Paper Roll ×1

① The Paper Roll has been installed in the printer. However, if you have purchased a bundled printer package, it does not include a 40*30mm-100pc Paper Roll.

1.2 Printer Parts Instruction



2. Getting Started

2.1 Downloading the App

Method 1: Search for the "Print Master" app on App Store® or Google Play™ for download and installation.



Print Master

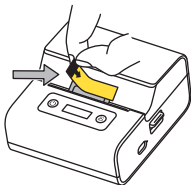
Method 2: Scan the QR code to download the app. You can scan the code using your cell phone's camera, the built-in QR code scanning feature of your browser, or a dedicated QR code scanning app.



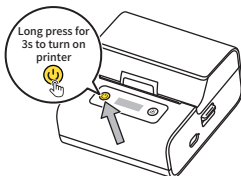
ⓘ As the Safari browser on Apple devices does not support direct QR code scanning, please use your device's built-in QR code scanner instead.

2.2 User Guide

- 01** Remove the protective film.



- 02** Long press the Power Button for 3 seconds until the Display lights up.

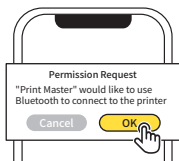


⚠ This step is required for first use.

- 03** Open the "Print Master" app.

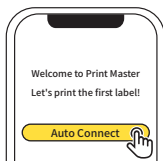


- 04** Grant permissions.



⚠ For more information about app permissions, see [6.2 Permission Description](#) in this guide.

- 05** Tap [Auto Connect].

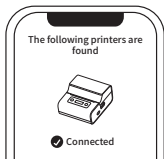


- 06** Searching for printer.



⚠ You can find instructions for manual connection on the [Home] page. For detailed instructions, see [6.1 Manual Connection](#) in this guide.

07 Connected.



08 Edit your first label, and tap [Print] after you finish editing.



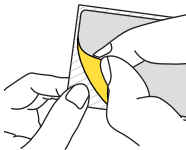
09 Printing is completed.



10 Tear off the label along the Paper Exit.



11 Remove the liner.

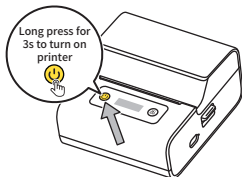


12 Attach the label to a dry, flat surface.



3. Replacing the Paper Roll

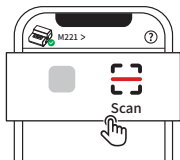
- 01** Long press the Power Button for 3 seconds until the Display lights up.



- 02** Open the "Print Master" app.

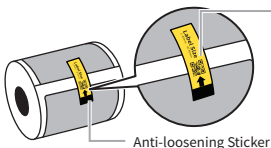


- 03** Tap [Scan].



⚠ Please use [Scan] after connecting the printer to the app. Otherwise, scanning will fail and the editing page will not be displayed.

- 04** Take out the unused paper roll.



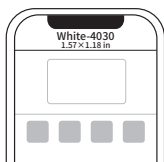
This QR code is for demonstration only. Please scan the actual QR code on your paper roll.

⚠ If you have purchased boxed paper rolls separately, or if there is no QR code on the paper roll, please see [4. Identifying Label Sizes](#) in this guide for instructions on how to quickly access the editing page.

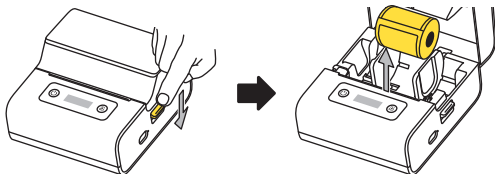
05 Scan the QR code on the Anti-loosening Sticker of the paper roll.



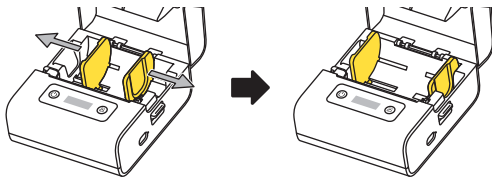
06 Paper roll size has been identified. Enter the editing page.



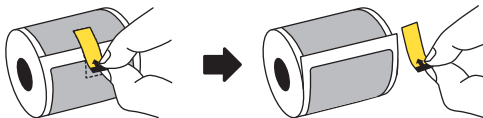
07 Press down the Cover Open Lever and remove the paper roll to be replaced from the Paper Compartment.



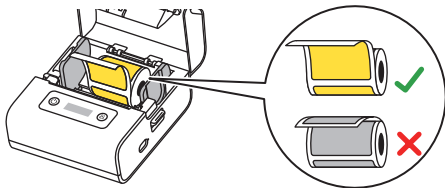
08 Slide the Guides outwards as far as they can go.



09 Remove the Anti-loosening Sticker from the paper roll.

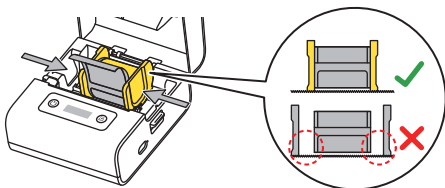


- 10** Place the paper roll in the Paper Compartment.

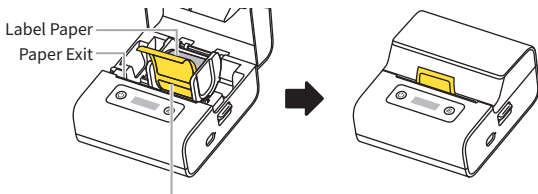


- ① Make sure the paper roll is placed in the right direction.

- 11** Slide the Guides inwards to the edges of the paper roll.

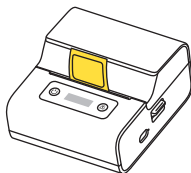


- 12** Extend the label paper out above the Paper Outlet and then close the Top Cover.



- ① The Label Paper faces the Power Button and is higher than the Paper Exit.

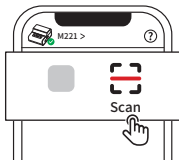
- 13** The Paper Exit will automatically feed out a blank piece of label paper, which indicates that calibration is completed.



4. Identifying Label Sizes

4.1 Scanning the QR Code

01 Go to "Home" and tap [Scan].



02 Aim the scanning frame at the QR code on the paper roll box.



03 Enter the editing page.



- ❗ Please connect the printer to the app before you scan the QR code. Otherwise, the app won't be able to identify the label size and redirect to the editing page.
- For instructions on manually connecting to the printer, see [6.1 Manual Connection](#) in this guide.

4.2 Finding Label Specifications

If there is no QR code on the paper roll box, please enter the label size manually in the app. You can identify the label size in the following ways:

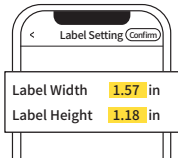
- 01** Find label specifications on the information side of the paper roll box.



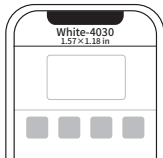
- 02** Click on [New Label] on the app homepage and select [Newly created by blank label].



- 03** Input corresponding specifications.

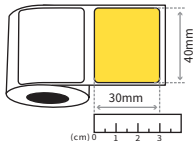


- 04** Enter the editing page.



4.3 Measuring the Label

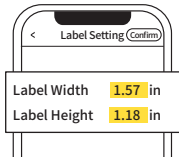
- 01** Measure the length and width of a single label with a ruler.



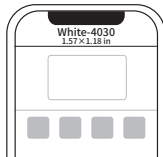
- 02** Click on [New Label] on the app homepage and select [Newly created by blank label].



- 03** Input corresponding specifications.

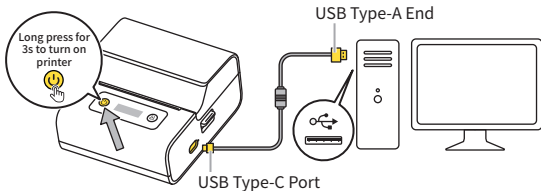


- 04** Enter the editing page.

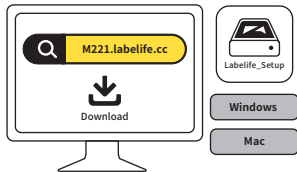


5. Downloading and Installing the PC Application

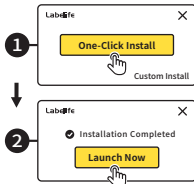
- 01** Long press the Power Button for 3 seconds until the Display lights up, and connect the printer to the computer using the original cable supplied with the printer.



- 02** Visit M221.labelife.cc to download the "Labelife" application.



- 03** Installing the "Labelife" application.



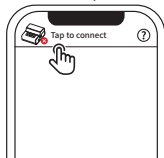
6. App User Guide

6.1 Manual Connection

- 01** Select your printer.



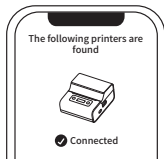
- 02** Click on the top left corner to connect to the printer.



- 03** Searching for printer.



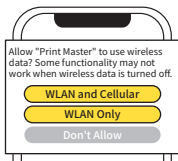
- 04** Connected.



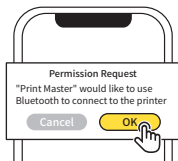
6.2 Permission Description

For iOS users

1. The app requires access to the Internet.

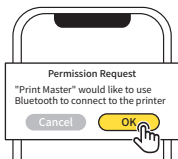


2. The app requires Bluetooth permission.



For Android users

1. The app requires Bluetooth permission.



2. The app requires permission to search for nearby Bluetooth devices.



! For Android 12 and above, the app requires permission to search for nearby Bluetooth devices; for systems below Android 12, the app requires GPS permission in order to search for nearby Bluetooth devices.

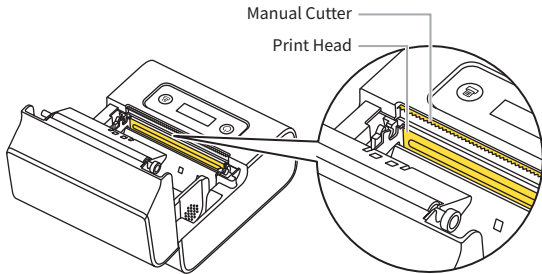
3. Bluetooth Pairing Request.



! You can simply tap "Pair" without checking "Allow access to your contacts and call history."

7. Safety Instructions

7.1 Manual Cutter and Print Head Instructions



Warning: This cutter has sharp edges. Do not touch the edges of the cutter.

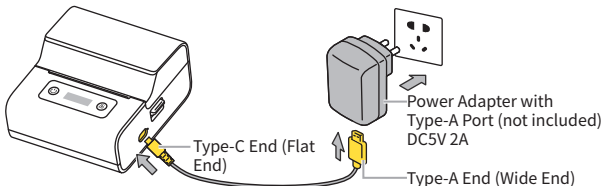


Warning: The component can be HOT! Touching it when it is hot can cause burns to your fingers. Before you touch the Print Head, please wait for at least 30 minutes after turning off the printer.

7.2 Charging Instructions

1. Please prepare your own power adapter (DC 5V/2A) with a Type-A port.
2. Insert the Type-C end (flat end) of the USB cable into M221's Type-C Port; insert the Type-A end (wide end) of the USB cable into the Type-A port of the power adapter.
3. After connecting the printer to an outlet via the power adapter, check the Display for the following indications: When the printer is off, "Charging..." will be displayed. When the printer is on, a "🔌" icon will appear in the top right corner of the Display.
4. To ensure quick usage, please charge the printer for at least 20 minutes. For a complete charge, wait for 2-3 hours or until the Display indicates "Charge Finished".
5. As the printer may heat up during charging, avoid placing it on materials such as cotton or linen. Once the battery is fully charged, please unplug the charger promptly.

⚠ Avoid using the printer while charging, as this may lead to reduced charging speed, compromised print quality, and shortened battery life.

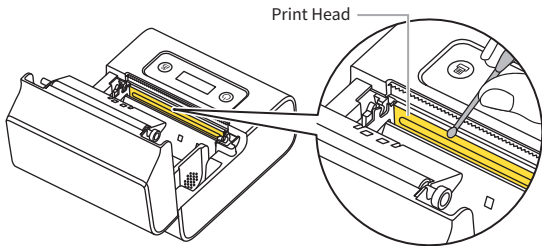


8. Cleaning and Maintenance

⚠ Please make sure the printer is turned off before performing any cleaning or maintenance.

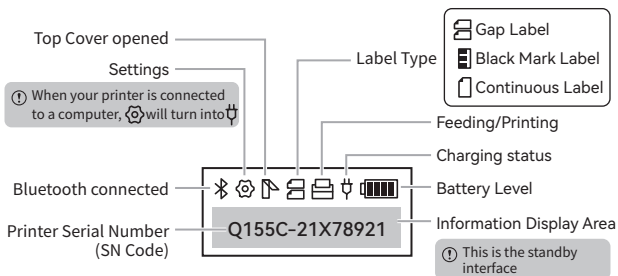
If you encounter issues such as blank lines, blurry print, or missing characters, it may be caused by dirt on the Print Head. Please follow these steps:

- 01** If you have just finished printing, wait for at least 30 minutes for the Print Head to cool down completely.
- 02** Use a cotton swab dipped in alcohol or a print head cleaning pen (purchased separately) to gently wipe the surface of the Print Head about 5 times to remove any dust and stains.
- 03** Wait 5-10 minutes for the alcohol to evaporate completely. Thus, the cleaning is done, and you can continue using the printer.





9. Operator Panel Instructions

9.1 Display Instructions



9.2 Button Instructions

Button Type	Operation	Function
 Power Button	Long press for 3s	Power on/off
	Press once	When in standby mode, access main menu for selection
 Feed Button	Press once	When in standby mode, feed out paper
	Press once	When in main menu, access sub-menu for selection <p>After selecting an option in a sub-menu, the system will automatically revert to the standby interface if there is no further activity for 10 seconds.</p>

9.3 Menu Instructions

Main Menu	Sub-menu	Explanation
Language	English	Choose language
Darkness	4(Weak),6(Normal),10(Dark)	Choose print density
Pager type	Continuous,Gap,Black	Choose label type
Power OFF	5 Minutes, 15 Minutes, 30 Minutes, 1Hour, 2Hour, 4Hour, 8Hour, 24Hour, NO Close (default option)	Schedule automatic shut down
Restore Settings	/	Reset the device to factory settings
Firmware	Show firmware version	/
Address	Show device address	/
Test print	Test print	Print device information

10. Information to User

10.1 FCC WARNING

1. This device complies with Part 15 of the FCC Rules. Operation is subject to the following two conditions:

- (1) This device may not cause harmful interference, and
- (2) This device must accept any interference received, including interference that may cause undesired operation.

2. Any Changes or modifications not expressly approved by the party responsible for compliance could void the user's authority to operate the equipment.

NOTE: This equipment has been tested and found to comply with the limits for a Class B digital device, pursuant to Part 15 of the FCC Rules. These limits are designed to provide reasonable protection against harmful interference in a residential installation.

This equipment generates uses and can radiate radio frequency energy and, if not installed and used in accordance with the instructions, may cause harmful interference to radio communications.

However, there is no guarantee that interference will not occur in a particular installation. If this equipment does cause harmful interference to radio or television reception, which can be determined by turning the equipment off and on, the user is encouraged to try to correct the interference by one or more of the following measures:

- Reorient or relocate the receiving antenna.
- Increase the separation between the equipment and receiver.
- Connect the equipment into an outlet on a circuit different from that to which the receiver is connected.
- Consult the dealer or an experienced radio/TV technician for help.

FCC Radiation Exposure Statement

The device has been evaluated to meet general RF exposure requirement. The device can be used in portable exposure condition without restriction.

10.2 ISED NOTICE(Canada)

CAN ICES(B)/NMB(B)

- English:

This device contains licence-exempt transmitter(s)/receiver(s) that comply with Innovation, Science and Economic Development Canada's licence-exempt RSS(s). Operation is subject to the following two conditions:

- (1) This device may not cause interference.
- (2) This device must accept any interference, including interference that may cause undesired operation of the device.

- French:

L' émetteur/récepteur exempt de licence contenu dans le présent appareil est conforme aux CNR d' Innovation, Sciences et Développement économique Canada applicables aux appareils radio exempts de licence. L' exploitation est autorisée aux deux conditions suivantes:

- 1) L' appareil ne doit pas produire de brouillage;
- 2) L' appareil doit accepter tout brouillage radioélectrique subi, même si le brouillage est susceptible d' en compromettre le fonctionnement IC RF exposure statement:

The device has been evaluated to meet general IC RF exposure requirement. The device can be used in portable exposure condition without restriction.

IC Déclaration d'exposition aux RF:

L'appareil a été évalué pour répondre aux exigences générales d'exposition aux RF d'IC. L'appareil peut être utilisé dans des conditions d'exposition portable sans restriction.

DECLARATION OF CONFORMITY

according to EN ISO/IEC 17050-1:2010

Manufacturer's Name and Address:

Zhuhai Quin Technology Co., Ltd.

ROOM 103-029(CENTRALIZED OFFICE AREA) , 1F, BUILDING 1, NO. 18 FUTIAN ROAD, XIANGZHOU DISTRICT, ZHUHAI CITY, CHINA

Phone:86-(0)756-8606111

Email:mingyan_s@qu-in.com

EU Authorised Representative:

Prolinx GmbH

Brehmstr.56, 40239 Duesseldorf Germany



TYPE OF EQUIPMENT: Multifunctional Portable Label Maker

Model Number: M221

Series model(s): N/A

TRADE/BRAND NAME: N/A

2024

Year CE marking was first
affixed to declared product

Zhuhai Quin Technology Co., Ltd., as the responsible party for regulatory compliance, declares under our sole responsibility that as delivered the described product is in conformity with the Radio Equipment Directive 2014/53/EU, EU Restriction of Hazardous Substances (RoHS) Directive 2011/65/EU and its amending Directive (EU) 2015/863, and carries the CE-marking.

The described product has been assessed and determined compliant with the following standards:

SAFETY: EN IEC 62368-1:2020+A11:2020, EN 62479:2010

EMC: EN 55032:2015+A1:2020,

EN 55035:2017+A1:2020,

EN IEC 61000-3-2:2019+A1:2021,

EN 61000-3-3:2013+A1:2019+A2:2021

ETSI EN 301 489-1 V2.2.3(2019-11),

ETSI EN 301 489-17 V3.2.4(2020-09)

Radio: ETST EN 300 328 V2.2.2 (2019-07)

RoHS: EN IEC 63000:2018

SUPPLEMENTARY INFORMATION: This product has been tested and found to comply with the electromagnetic compatibility (EMC) limits for a Class B digital device pursuant to the listed directives, regulations and standards. These limits are designed to provide reasonable protection against harmful interference when the equipment is operated in a residential or business environment. The equipment was tested in a typical configuration.

ZHUHAI CITY, CHINA

Place of Issue

January 25, 2024

Date of Issue

CE20240101

Document Control Tracking Number

Signature

Dunxiang Yang

Full Printed Name

Regulatory & Compliance Engineer

Position/Title

10.4 Trademarks



Bluetooth®

The Bluetooth®/MD word mark and logos are registered trademarks owned by Bluetooth SIG, Inc. and any use of such marks by Zhuhai Quin Technology Co., Ltd. is under license. Other trademarks and trade names are those of their respective owners.

Apple, the Apple logo, iPhone, iPad, iPod, and iPod touch are trademarks of Apple Inc., registered in the U.S. and other countries. App Store is a service mark of Apple Inc.

Android and Google Play are trademarks of Google Inc. Google and Google Logo are registered trademarks of Google Inc.



WARNING

Please pay attention to electrical safety. Do not disassemble, crush or puncture the battery. This product is not a toy.

Bitte achten Sie auf elektrische Sicherheit. Zerlegen, zerquetschen oder durchstechen Sie die Batterie nicht. Dieses Produkt ist kein Spielzeug.

Veuillez noter la sécurité électrique. Ne pas démonter, écraser ou piquer la batterie. Ce produit n'est pas un jouet.

Si prega di prestare attenzione alla sicurezza elettrica. Non smontare, schiacciare o perforare la batteria. Questo prodotto non è un giocattolo.

Preste atención a la seguridad del consumo de electricidad. No retire, triture o pinche la batería. Este producto no es un juguete.

Lütfen elektrik güvenliğine dikkat edin. Batiriyi dağıtma, yıkma veya yumruklama. Bu ürün oyuncak değil.

Var uppmärksam på elsäkerheten. Ta inte isär, krossa eller punktera batteriet. Den här produkten är ingen leksak.

Let op elektrische veiligheid. Demonteer, verpletter of prik de batterij niet. Dit product is geen speelgoed.

Proszę zwrócić uwagę na bezpieczeństwo elektryczne. Nie demontuj, nie miażdż ani nie przebijaj akumulatora. Ten produkt nie jest zabawką.

Special Notes

The company assumes full responsibility for the revision and explanation of this manual, exercising utmost diligence to guarantee its accuracy. Nevertheless, please note that any technical improvements to the product may not be separately notified, and that the images of the product, accessories, software interfaces, etc. in this manual serve solely as illustrations and references. Due to product updates and upgrades, the actual product may vary slightly from the images. Please refer to the physical product for accurate representations.