



User Manual

FC CE IP40

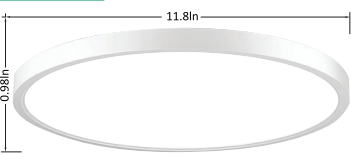
Introduction

LED Ceiling Light are suitable for use in all scenarios.
Minimalist design that never goes out of style. Can blend perfectly with different home designs.
We devote to make brilliant and affordable lights for everyone needed. Your choice and valuable suggestion always inspire us to make better lights.
Please kindly keep the user manual for your reference.
If you have any questions, Please do not rush refund/returns
Please feel free to contact us. We will help you solve the problem!
Email:support004@keepsmile.vip
Telephone:(877)877-3155 (702)666-9925

Product parameters

Model	HX-XDD01
Rated input	AC100-240V
Rated Frequency	50/60Hz
Wattage(W)	20
Luminous flux(lm)	2000
IP rating	IP40
CCT	3000K-6500K
Lamp life(L70B50)	30000H
Material	ABS+PC
Working Temperature:	-25℃~40℃

Product Size



Troubleshooting

- Is this light, is it splash-proof rated or can be used safely in the shower?
- This ceiling light is IP40 rated, dustproof but not waterproof. It is recommended for use in semi-indoor and indoor spaces such as foyers, staircases, storage rooms, closets, laundry rooms, checkrooms, etc.
- Do I need to install extra light bulbs?
- This ceiling light is LED type. It doesn't need extra bulbs. LED is the new technology to replace the traditional type of fluorescent bulbs.

The light is the right lighting mode of this ceiling lamp!

The brightness of the light will become weaker, the light will become warmer, and the light output will become lower. The color temperature is 3000K and the brightness is 70%.

Can I set my own light color or light temperature?

Certainly yes, you can set the color temperature of your ceiling fixture from warm white to daylight white as desired. The color temperature is adjustable on the remote control with 1000K increments.

What are the parameters of brightness?

The brightness is 20%/50%/100% respectively. When you choose the night light mode, the brightness is 10% of the color temperature 3000K.

How long can this ceiling light be used?

The time is 30 minutes/12h respectively, select the button on the remote control according to your need, after that, the light will turn off when the time is up.

Can two or more lights be paired with one remote control?

One remote control cannot control more than one light at the same time, this remote control is required to pair the code to each controlled ceiling light; if the remote control is lost due to another lamp, last control the previously coded lamp.

What happens if I lose the remote control? What about the light being left on when I return?

This dimmable remote controlled ceiling light can remember your settings; the next time it was turned off, even when you turn it on again, it remains your settings.

Can it be installed by yourself, it's very easy to install, only 3 steps are needed to complete the installation [1] Turn off the switch and disconnect the wires; [2] Install the base under the window; [3] Rotate the ceiling light to the mounting base.

[2] Connect the source of power of existing light to the new light. [3] What about the light being left on when I return?

[1] Plug a defective lamp, plug in and break a new one!

Please refer to your inquiry! It's pleasure to help you. Please contact us for further assistance.

Customer Service Email: sales@recharge-led.com

Thank you very much for your choice

Please read this installation carefully before installing or using this product and keep this user manual for further reference.

Always/Before starting the installation work make sure that the mains power line is voltage-free. The switch must be "OFF".

Electrical and maintenance work should only be carried out by a qualified technician in accordance with local safety regulations.

If the stranded wire must not be welded it should be used with wire sleeves or insulated ends.

All emergency line including the pre-assembled luminaires must be firmly screwed on or completely plugged in at the connection.

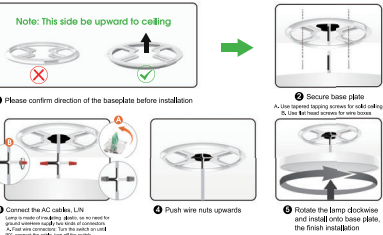
The lamp must be kept in operation, and can only be touched or replaced after the lamp has cooled.

Do not install or place near heaters/heat exchangers or other heat sources. Keep the lamp well ventilated when it is on.

Children shall not play with the product.

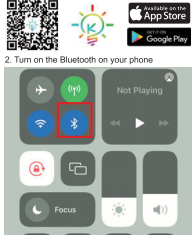
Do not touch the product in order to avoid the risk of electric shock do not place the cord or main body in water or on any other liquid.

The manufacturer's attention must be used appropriately. Consult installation instructions/always pay attention to the technical data on the product. We reserve the right to change technology.

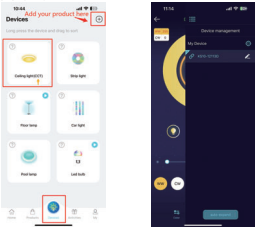


(APP Control

1. Scan the below QR code or search and download Keepsmile app from Apple Store or Google play



3. Don't connect it on Bluetooth, after turn on the Bluetooth, please open straight to the keepsmile app. Select 'Ceiling light(CCT)'



- mark means sucessfully connected.
-  mark means Bluetooth unconnected, please tap this mark to make it connected



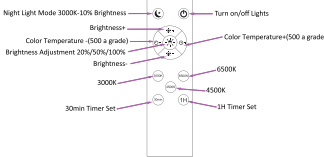
Installation instructions:

2. The rotation direction of the light and the chassis is opposite. Please install according to the directions of the chassis and the light respectively during the installation process.

Installation instructions:

2. The rotation direction of the light and the chassis is opposite. Please install according to the directions of the chassis and the light respectively during the installation process.






Remote Control Instructions



Note: The code of the ceiling lamp has been completed when it leaves the factory, please do not clear the code, otherwise it will affect the use. (If the remote control cannot be used, try to clear the code and re-match the code.)

Matching code (ON/OFF button): within 30 seconds after the lamps and lanterns are powered on, long press the switch button of the remote control corner of the remote control for 3 seconds, the light flashes rapidly for a few times, indicating the success of matching the code.

Clear code (night light mode button): within 30 seconds after the lamps and lanterns are powered on, long press the night light mode button at the upper left corner of the remote control for 5 seconds, and the light will flash a few times to indicate the success of clear code.

     Made in China