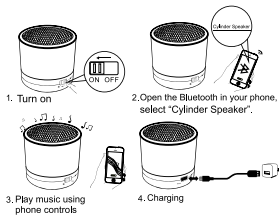


# Cylinder Bluetooth® Speaker Instruction Manual S10



## What's included:

- 1 x Cylinder Speaker
- 1 x USB to Micro-USB charging cable
- 1 x Instruction Manual

## LED Indicator

- Charging: Glowing Red LED
- Charging Complete: Red LED off

## Tech Specifications

- Pairing Name: "Cylinder Speaker"
- Battery capacity: 300mAh
- Listening Time (at max vol): 1 hour
- Charging Time: 1.5 hours

## Instructions:

- Charging the speaker:
  - Using a Regulated USB Adapter:
    - Connect the provided USB cable to a regulated USB adapter.
    - Connect the opposite, Micro-USB end of the cable to the charging port on the speaker.
    - Plug the USB adapter into the outlet to begin charging.
  - Using a Computer:
    - Connect a USB cable to a USB outlet on your computer.
    - \* Make sure the computer is on to begin charging the speaker.*
- Connecting the speaker with Bluetooth:
  - Turn ON the power switch
    - Once on, the speaker will enter Bluetooth pairing mode.
  - Using a Bluetooth enabled device, search for "Cylinder Speaker" from the list of available options.
- Using the Speaker:
  - Use the audio device to control track selection and volume
  - \* Note: In order to charge device use only accessory cable (provided with device) or the cable included with your own device by the manufacturer.*

## SAFETY PRECAUTIONS:

- WARNING—When using this product, basic precautions should always be followed, including the following:
  - Read all the instructions before using the product.
  - Charge the speaker completely before initial use for best practices.
  - If the device does not respond once it is powered on, the battery capacity may be low. Do not over charge the internal battery.
  - Do not immerse in water or expose it to moisture or weather conditions.
  - Do not drop, knock, or shake. Rough handling can damage the internal precision component and its boards.
  - Keep away from children, this device is not a toy.
  - Keep away from fire or other sources of heat. Expose to high temperatures may cause it to explode.
  - Do not short-circuit, as this may cause damage to the unit.
  - Unauthorized changed or modifications may void your right to use this product.
  - While using, always comply with any special regulations that may apply to the area you are in and always turn off your mobile device when its use is prohibited.

## FCC Statement:

1. This device complies with Part 15 of the FCC Rules. Operation is subject to the following two conditions:  
(1) This device may not cause harmful interference.  
(2) This device must accept any interference received, including interference that may cause undesired operation.

2. Changes or modifications not expressly approved by the party responsible for compliance could void the user's authority to operate the equipment.

NOTE: This equipment has been tested and found to comply with the limits for a Class B digital device, pursuant to Part 15 of the FCC Rules. These limits are designed to provide reasonable protection against harmful interference in a residential installation. This equipment generates uses and can radiate radio frequency energy and, if not installed and used in accordance with the instructions, may cause harmful interference to radio communications. However, there is no guarantee that interference will not occur in a particular installation. If this equipment does cause harmful interference to radio or television reception, which can be determined by turning the equipment off and on, the user is encouraged to try to correct the interference by one or more of the following measures: Reorient or relocate the receiving antenna. Increase the separation between the equipment and receiver. Connect the equipment into an outlet on a circuit different from that to which the receiver is connected. Consult the dealer or an experienced radio/TV technician for help.

FCC Radiation Exposure Statement This equipment complies with FCC radiation exposure limits set forth for an uncontrolled environment. This equipment should be installed and operated with minimum distance 5mm between the radiator & your body



MADE IN CHINA