



Set Up Tuya Integration (Stable) in Home Assistant

Version: 20240911

Contents

1. Limitations	2
2. Prerequisites	3
3. Procedure	4
3.1. Install Home Assistant Core	4
3.2. Install the Tuya integration for Home Assistant	4
4. FAQs	10
4.1. Which categories does the Tuya integration for Home Assistant support?	10



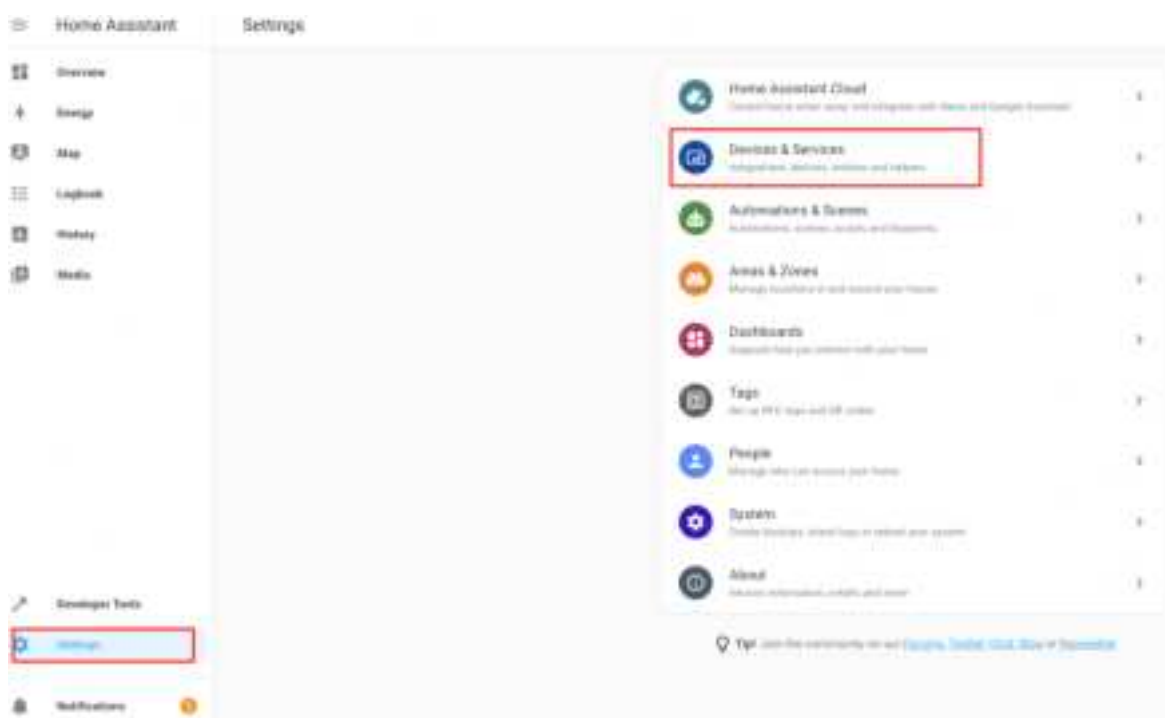
This topic describes how to install the official Tuya integration for Home Assistant.

1. Limitations

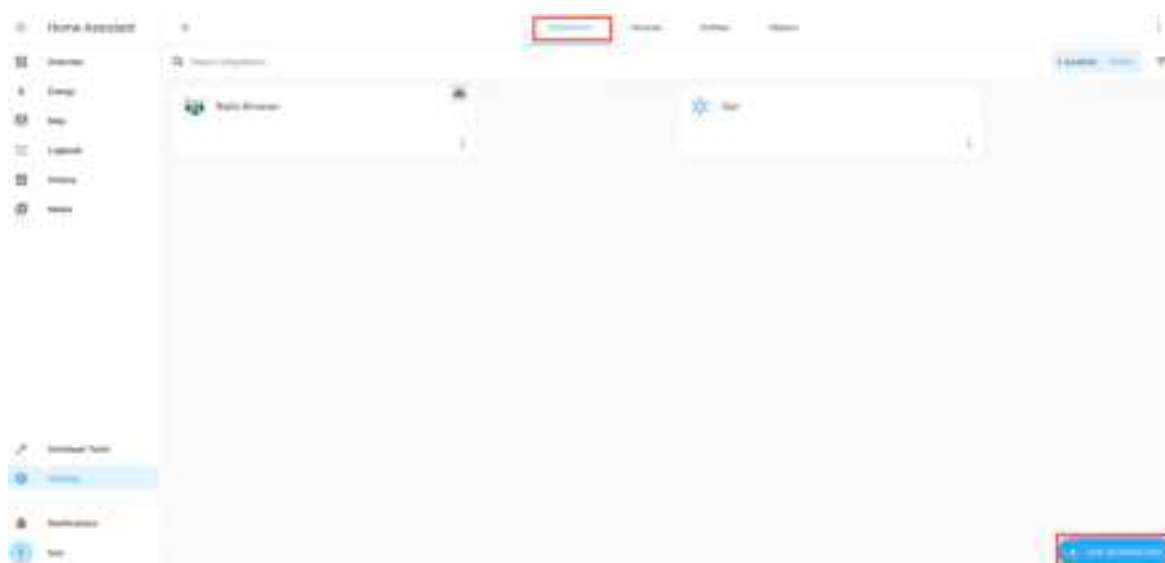
This integration supports common device categories, such as switches, lights, fans, and thermo-hygrometers. However, it does not guarantee that Home Assistant supports all categories of Tuya devices.

2. Prerequisites

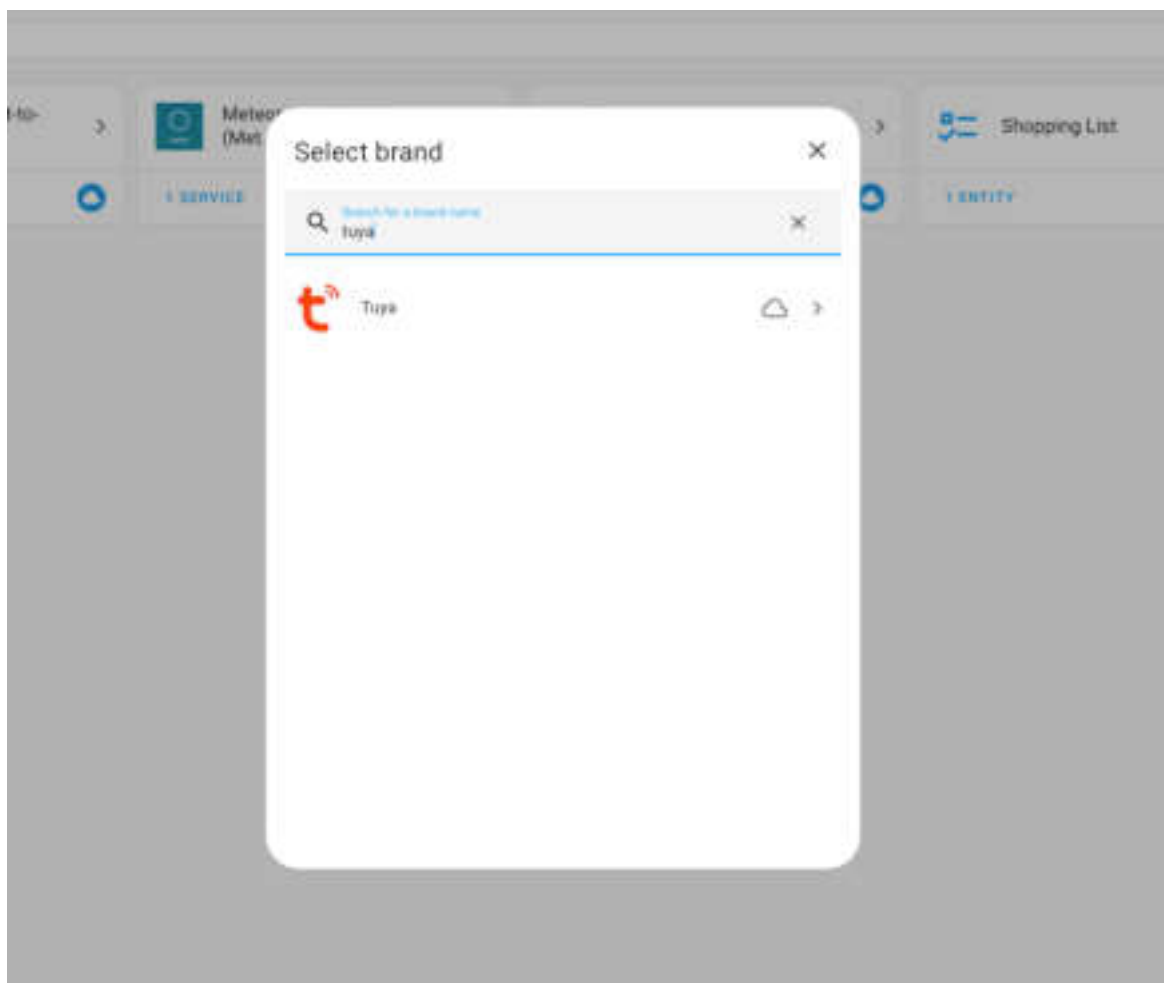
You have installed the **Tuya Smart** or **Smart Life** app, created an account, and added at least one device to that account. For more information, see [Smart Life App Overview](#) .



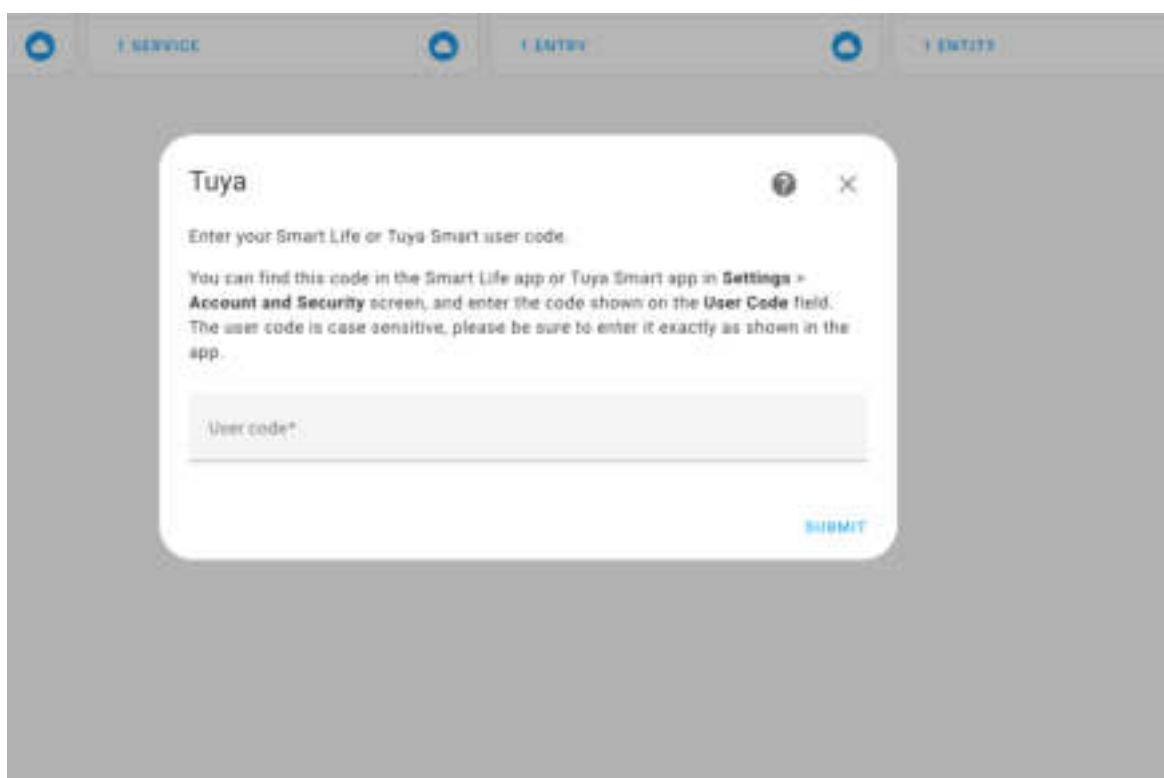
4. On the **Integrations** tab, click **ADD INTEGRATION**.



5. Search for **Tuya**, and click the integration icon to install it.

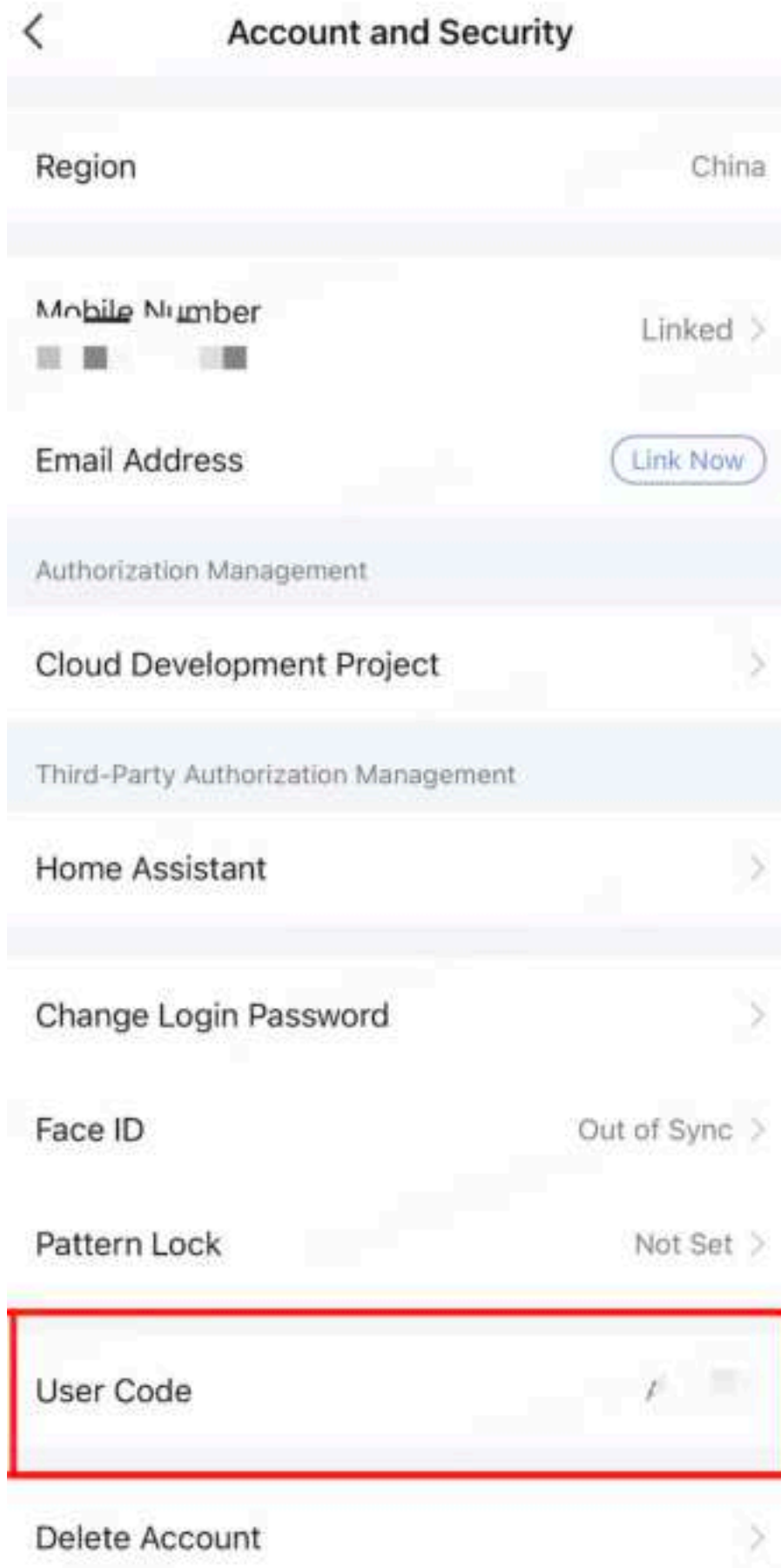


6. In the pop-up window, enter your user code.

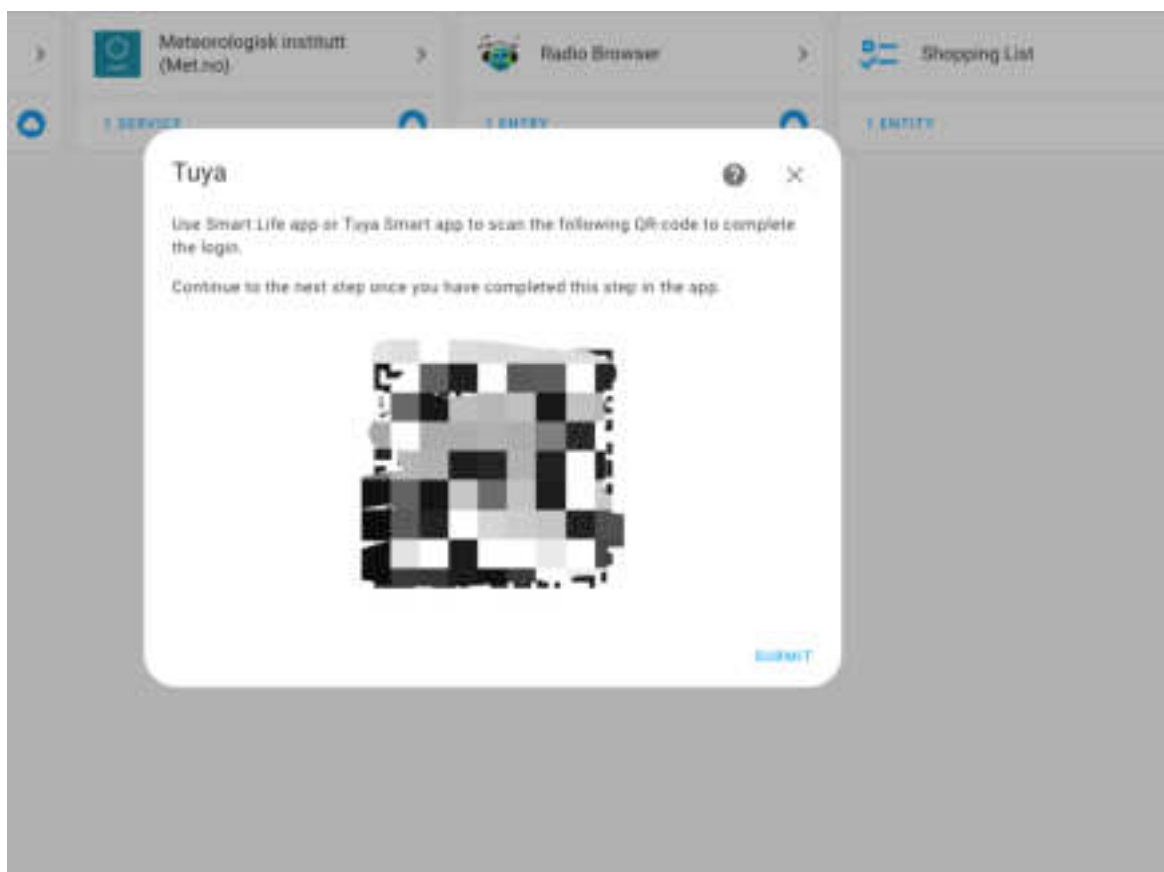


To get your user code, do the following:

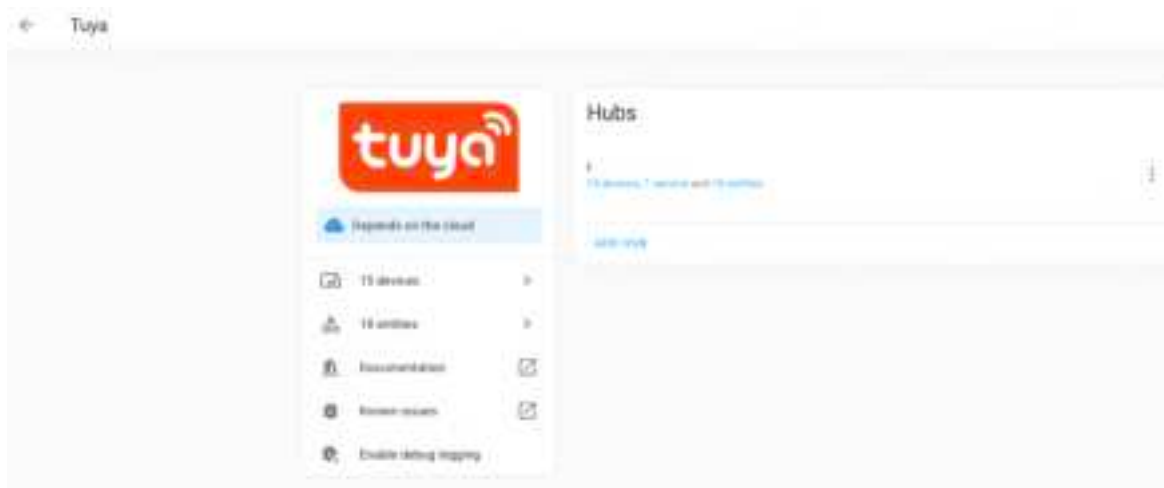
1. Open the **Tuya Smart** or **Smart Life** app.
2. Tap **Me** in the bottom right corner, and tap the settings icon in the top right corner.
3. Choose **Account and Security > User Code**.



7. Scan the QR code and click **SUBMIT** to log in.



8. After logging in, you can view and control devices.



4. FAQs

4.1. Which categories does the Tuya integration for Home Assistant support?

The following table displays the categories that the Tuya integration for Home Assistant supports.

Classification	Category code	Category
Large home appliance	kt	Air conditioner
	rs	Water heater
Small home appliance	cwwsq	Pet feeder
	qn	Heating device
	sd	Robot vacuum
	fs	Fan
	cl	Curtain motor
	kj	Air purifier
	cs	Dehumidifier
	xxj	Aroma diffuser
	mc	Door/Window controller
	cwysj	Pet water dispenser



Classification	Category code	Category
Electrical device	kg	Switch
	cz	Socket
	pc	Power strip
	clkg	Curtain switch
	jdcljqr	Curtain robot
	wk	Thermostat
	dlq	Circuit breaker
	ckmkzq	Garage door opener
	fskg	Fan switch

Classification	Category code	Category
Security and sensor	wsdcg	Temperature and humidity sensor
	mcs	Door/Window sensor
	ywbj	Smoke detector
	rqbj	Gas detector
	pir	Passive infrared sensor
	sj	Water detector
	pm25	PM2.5 sensor
	hps	Human presence sensor
	sos	Emergency button
	ldcg	Luminance sensor
	sp	Pan-tilt camera
	sgbj	Audible and visible alarm
	zd	Vibration sensor
	co2bj	CO2 sensor
	cobj	CO sensor
	jqbj	Formaldehyde detector
	jwbj	Methane detector
	voc	Volatile organic compound sensor
	ylcg	Pressure sensor
	mal	Alarm host
	dgnbj	Multifunctional sensor
12 / 13	hjicy	Environmental sensor
	zndb	Smart electricity meter

Classification	Category code	Category
Lighting device	dj	Light
	dd	Strip light
	fwl	Ambient light
	dc	String light
	xdd	Ceiling light
	fsd	Ceiling fan light
	fwd	Ambient light
	gyd	Motion sensor light
	jsq	Humidifier
	tgkg	Dimmer switch
	tgq	Dimmer
	tyndj	Solar light
Kitchen appliance	ykq	Remote control
	bh	Smart electric tea kettle
	kfj	Coffee maker
	mzj	Sous vide cooker
	cn	Formula milk maker