

soundcore



soundcore Liberty 4 NC

**USER MANUAL**

English	01	Português	53
Čeština	05	Portugues do Brasil	57
Dansk	09	Русский	61
Deutsch	13	Slovenský Jazyk	65
ελληνικά	17	Slovenski Jezik	69
Español	21	Svenska	73
Suomi	25	Türkçe	77
Français	29	日本語	81
Magyar	33	한국어	85
Italiano	37	简体中文	89
Nederlands	41	繁體中文	93
Norsk	45	لَعَرَبِيَّة	97
Język polski	49	עברית	101



## APP



Google Play and the Google Play logo are trademarks of Google Inc.



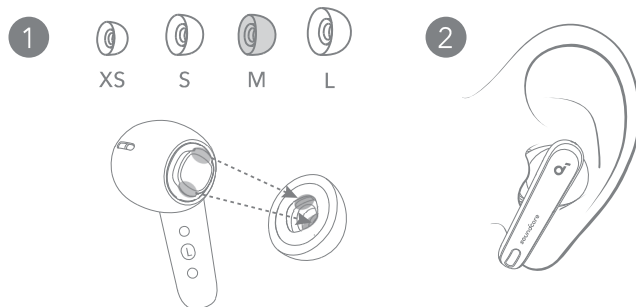
Apple and the Apple logo are trademarks of Apple Inc.



Download the soundcore app to get the most out of your earbuds with 3D surround sound, ambient sound modes, HearID sound, gaming mode, firmware updates, and more. If your earbuds cannot connect with the soundcore app, re-install the app or update it to the latest version in your mobile app store.



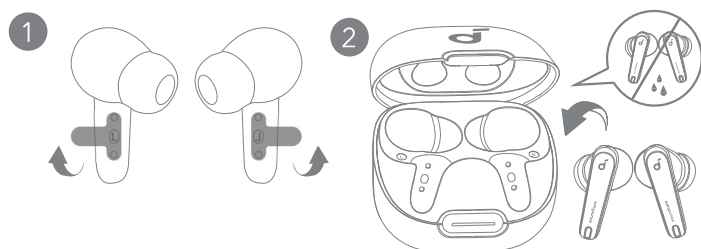
## WEARING



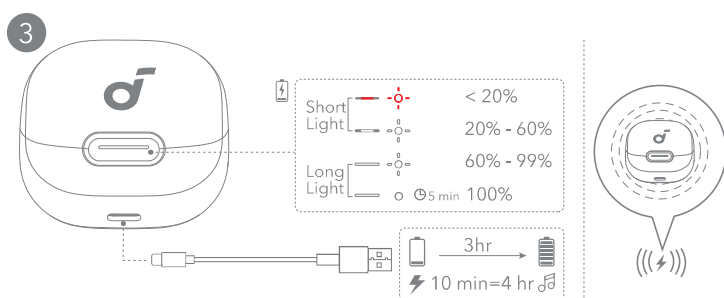
Choose the ear tips that fit your ears best and take a fit test in the soundcore app to ensure you get the best ANC performance.



## CHARGING



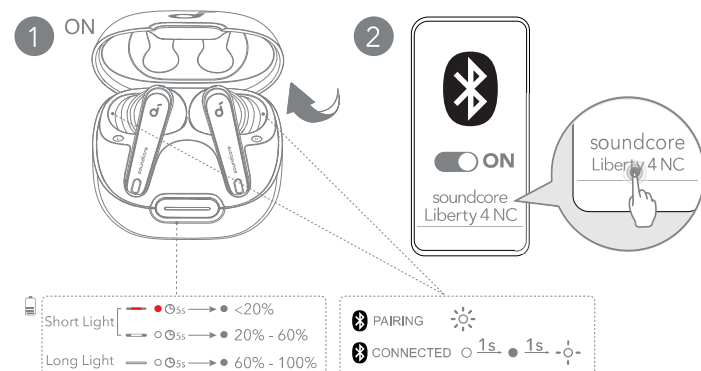
1. Tear off the insulation sticker on the earbuds before first use.
2. Place the earbuds in the charging case and close it.
  - Fully dry off the earbuds and the USB-C charging port before charging.



3. Connect the charging case to the power supply by using a certified USB-C charging cable. Alternatively, position the charging case at the center of your wireless charger for wireless charging.
  - Fully charge both the earbuds and the charging case before the first use.



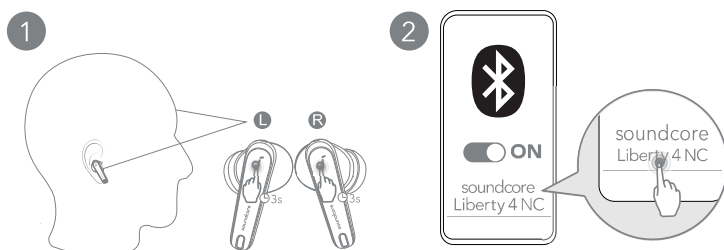
## POWERING ON & PAIRING



Open the charging case, the earbuds will automatically power on and enter Bluetooth pairing mode. Select "soundcore Liberty 4 NC" from your device's Bluetooth list when connecting for the first time.



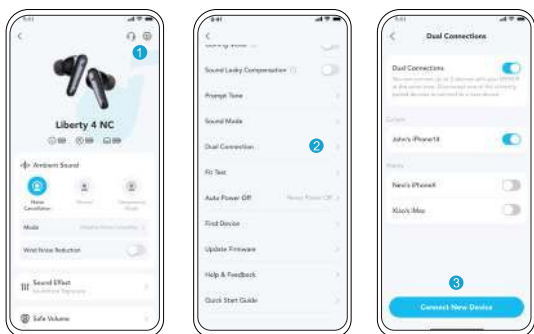
## DUAL CONNECTIONS



There are two ways to connect the earbuds with two Bluetooth devices at the same time.

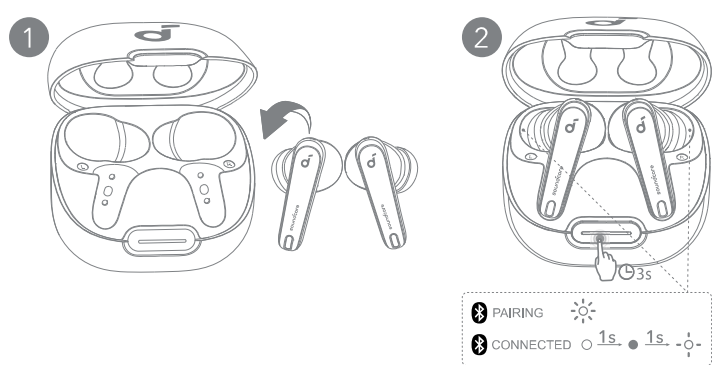
Option A: To pair with another device, wear the earbuds, then press and hold the touchpad on both earbuds for 3 seconds simultaneously.

## DUAL CONNECTIONS



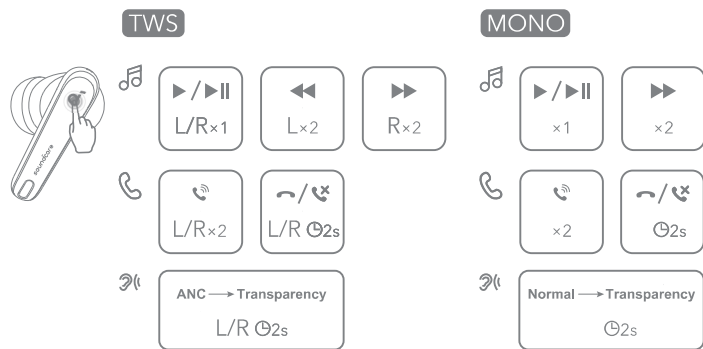
Option B: In the soundcore app, go to settings and select Dual Connections > Connect New Device.

## MANUAL PAIRING



To manually enter Bluetooth pairing mode, place the earbuds in the charging case and leave the case open. Press and hold the charging case button all the way down for 3 seconds until the LED indicators flash white rapidly.

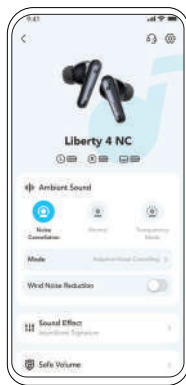
## CONTROLS



You can also customize controls in the soundcore app.

		TWS mode	Mono mode
🎵	Play/Pause	Tap once (L/R)	Tap once
	Next track	Tap twice (R)	Tap twice
	Previous track	Tap twice (L)	/
📞	Answer a call	Tap twice (L/R)	Tap twice
	End/Reject a call	Tap and hold for 2 seconds (L/R)	Tap and hold for 2 seconds
👂	Switch ambient sound modes (ANC/Transparency)	Tap and hold for 2 seconds (L/R)	Tap and hold for 2 seconds

## AMBIENT SOUND



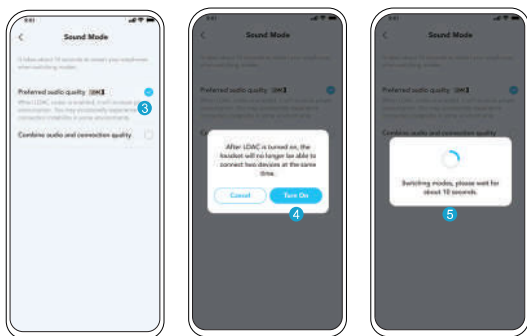
You can select noise cancellation, normal, or transparency mode in the soundcore app.

- **Adaptive ANC:** Optimize noise cancellation by adapting to your ears and environment.
- **Transparency:** Stay aware of your surroundings while listening to music.

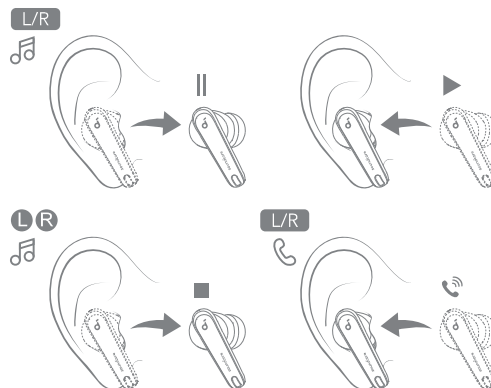
## LDAC



- Use devices powered by Android 8.0 or later to experience LDAC-quality sound.
  - LDAC provides higher-quality sound, increases power consumption, and reduces playtime.
  - Enable LDAC in a low-interference environment to ensure a stable Bluetooth connection.
1. Go to settings in the soundcore app.
  2. Click on **"Sound Mode"**.



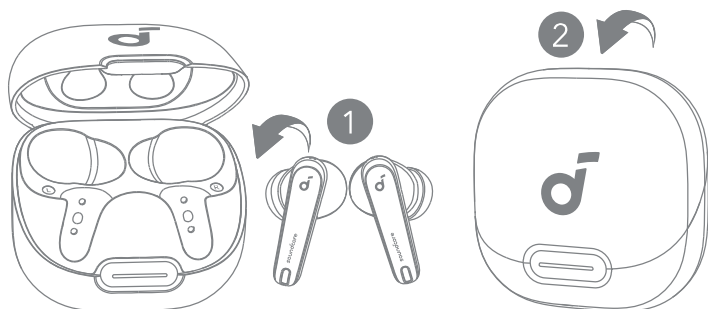
3. Select **"Preferred audio quality"** to switch to LDAC codec.
4. You will be notified that the earbuds do not support LDAC when connected to two devices. Select **"Turn on"** to continue.
5. It takes about 10 seconds to switch audio codecs. You may be asked to update the earbuds' firmware if available.



Playback will automatically pause when an earbud is removed and will resume again once you wear it. Wear either earbud to automatically answer an incoming call.



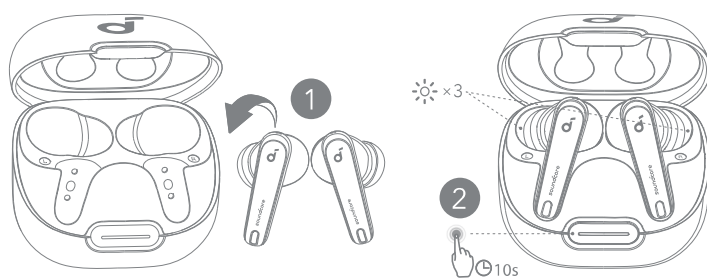
## POWERING OFF



To power off, return the earbuds to the charging case and close it. The earbuds will automatically power off after 30 minutes if they are not connected. The duration can be set in the soundcore app.



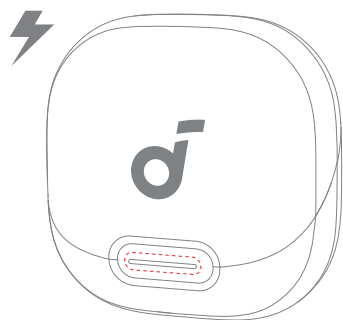
## RESET



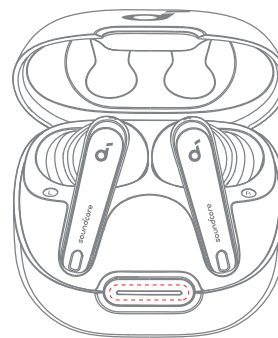
Reset if the earbuds have issues pairing with each other or with other devices. Delete the pairing history from your Bluetooth device first. Place the earbuds in the charging case and leave the case open. Press and hold the charging case button for 10 seconds until the LED indicators flash white rapidly three times.



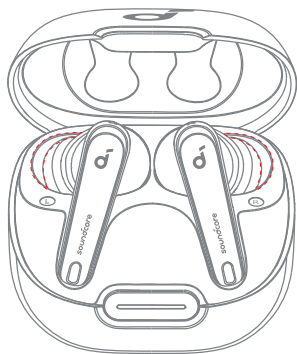
## LED LIGHT GUIDE








LED	Description	Battery level during charging
	Short light breathing red	< 20%
	Short light breathing white	20% - 60%
	Long light breathing white	60% - 99%
	Long light steady white for 5 minutes	100%



LED	Description	Battery level
	Short light steady red for 5 seconds, and then off	< 20%
	Short light steady white for 5 seconds, and then off	20% - 60%
	Long light steady white for 5 seconds, and then off	60% - 100%

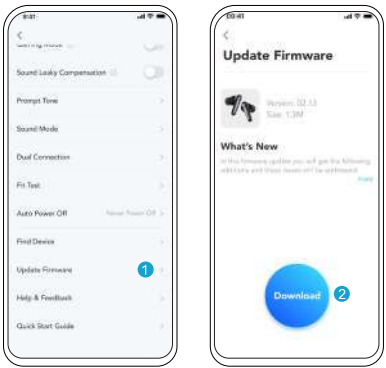


LED	Description	Status
 X 3	Flashing white three times	Reset completed
	Flashing white	Pairing
 1s  1s 	Steady white for 1 second, off for 1 second, and then flashing white slowly	Connected

## SPECS

Specifications are subject to change without notice.

Input	5V $\pm$ 0.8A
Rated output power	5mW
Battery capacity	53mAh x 2 (earbuds); 800mAh (charging case)
Charging time	Up to 3 hours
Playtime (with ANC off)	Up to 10 hours (50 hours in total with the charging case)
Playtime (with ANC on)	Up to 8 hours (40 hours in total with the charging case)
Driver unit	11mm dynamic driver
Frequency response	20Hz - 40kHz
Impedance	10 $\Omega$
Waterproof rating (earbuds)	IPX4
Bluetooth version	5.3
Bluetooth range	10m / 33ft



You will be informed once a new firmware version is detected when you connect the earbuds to the app. Ensure the earbuds are placed in the charging case and the case remains open until the firmware update is complete. During the update, ensure the earbuds are being charged and avoid any usage.