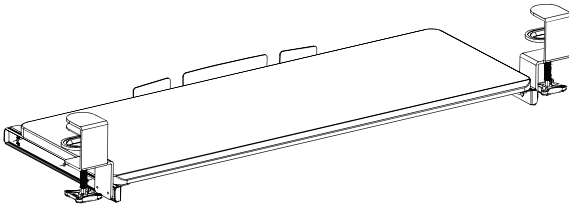




---

## Clamp-on Extra Long Keyboard Tray

### Instruction Manual



**SKU: MOUNT-KB15EB/EW**



Scan the QR code with your mobile device or follow the link for helpful videos and specifications related to this product.  
**<https://vivo-us.com/products/mount-kb15eb>**

---

**GET IN TOUCH** | Monday-Friday from 7:00am-7:00pm CST



**help@vivo-us.com**



**www.vivo-us.com**  
*Chat live with an agent!*



**309-278-5303**



## WARNING!

If you do not understand these directions, or if you have any doubts about the safety of the installation, please call a qualified technician. Check carefully to make sure there are no missing or defective parts. Improper installation may cause damage or serious injury. Do not use this product for any purpose that is not explicitly specified in this manual. Do not exceed weight capacity. We cannot be liable for damage or injury caused by improper mounting, incorrect assembly or inappropriate use.



## WARNING: CHOKING HAZARD

SMALL PARTS - NOT FOR CHILDREN UNDER 3 YEARS. ADULT SUPERVISION IS REQUIRED.

## PACKAGE CONTENTS



**A** (x1)  
Keyboard Tray



**B** (x2)  
Slider Bracket



**C** (x2)  
Clamp



**D** (x2)  
Pad



**S-A** (x6)  
M4x7mm  
Screws



**S-B** (x8)  
M5x12mm  
Screws

**NOTE:** SOME HARDWARE INCLUDED MAY NOT BE USED

## TOOLS NEEDED



**DO NOT EXCEED WEIGHT CAPACITY.**

Failure to do so may result in serious injury.

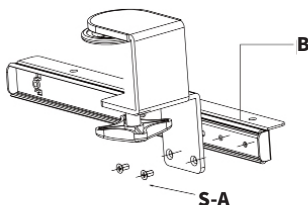
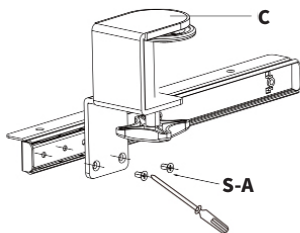


## ASSEMBLY STEPS

### STEP 1

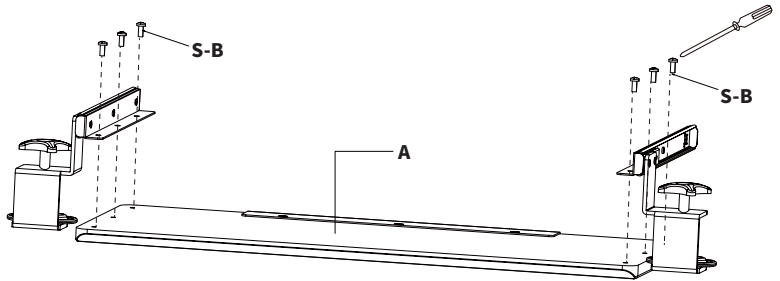
Assemble Slider Brackets (**B**) to Clamps (**C**) using M4x7MM Screws (**S-A**). Tighten with a Phillips screwdriver.

**NOTE:** Clamp can be offset using the extra holes in Slider Brackets (**B**) to allow the tray to be pulled out an extra 1.2" (30mm) when in use. If mounted this way the tray will sit further out from desk edge.



## STEP 2

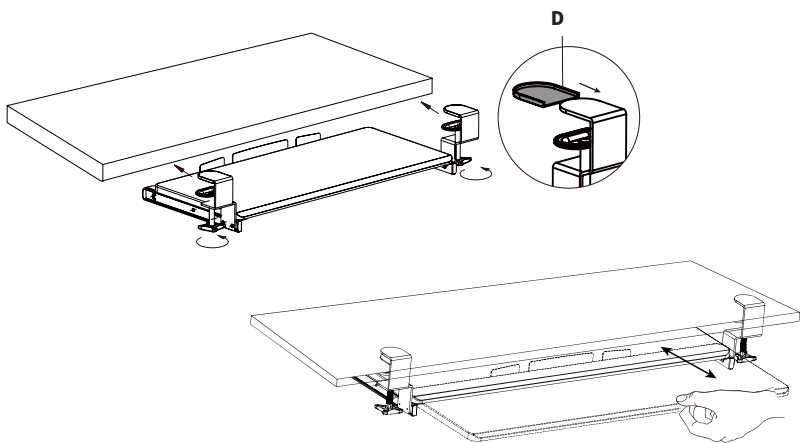
Assemble slider bracket assembly to Keyboard Tray (**A**) using M5x12mm screws (**S-B**), and tighten with a Phillips screwdriver. The clamps must be on the opposite end from the center cable guide.



## STEP 3

Place Pads (**D**) on the underside of each clamp. Place assembled keyboard mount on edge of desk and tighten clamps. **NOTE:** To ensure keyboard tray is level, do not over-tighten clamps.

Slide keyboard tray forward/back to desired position.





Love your new VIVO setup and want to share?  
Tag us in your photo! **@vivo\_us**

LAST UPDATED: 01/13/2023  
REV1



Open **Monday - Friday 7:00am - 7:00pm** CST,  
our dedicated support team can offer immediate assistance with rapid response times. If any  
parts are received damaged or defective, please contact us. We are happy to replace parts to  
ensure you have a fully functioning product.



309-278-5303

**AVG. RESOLUTION TIME** (*within office hrs*): **5M 4S**



[www.vivo-us.com](http://www.vivo-us.com)  
*Chat live with an agent!*

**AVG. RESOLUTION TIME** (*within office hrs*): **< 15 M**



[help@vivo-us.com](mailto:help@vivo-us.com)

**AVG. RESPONSE TIME** (*within office hrs*): **1HR 8M**

- 23% within < 15m
- 38% within < 30m
- 61% within < 1hr
- 83% within < 2hr
- 92% within < 3hr

FOR MORE VIVO PRODUCTS, CHECK OUT OUR WEBSITE AT: [www.vivo-us.com](http://www.vivo-us.com)