



www.sv3c.com

Customer Service:

US Email address: info-us@sv3c.com

UK Email address: info-uk@sv3c.com



**QUICK START GUIDE
FOR SV3C WI-FI CAMERA**

HX Series



Content

About camera	01
Connect camera	02
View via mobile phone	03
View via PC	09
Set Micro SD card records	12
Reboot and restore factory setting	16
More info	17

1. About camera

2.1. Product should contain:

IP Camera * 1	Power adapter * 1
User manual * 1	Network cable * 1
Wifi antenna * 1	Screws bag * 1

1.2. Product interface.

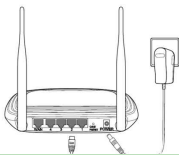


1.3. How to fit Waterproof lid.



2. Connect camera

- 2.1. Connect network cable to router and plug in power adapter.



The router must be able to connect to the Internet!

Please use the standard power supply.

- 2.2. Connect LAN cable and power to camera, it needs about one minute to self checking and then start working.



Network indicator light (green): always flashing means network data transmission is normal.

3. View via mobile phone

- 3.1. Download “CamHi” from Google Play (Android Phone) / App Store(Iphone) or scan the QR code below to get APP information.

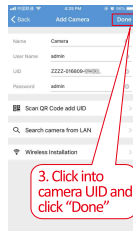
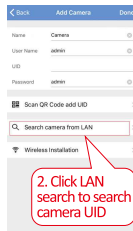
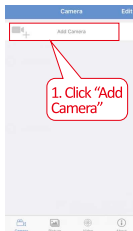


Android



IOS

- 3.2. Run APP and Add Camera.

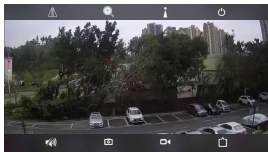


Please DON'T hit Wireless Installation

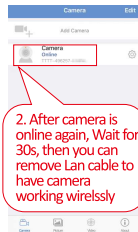
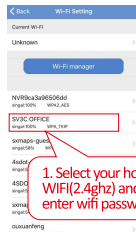
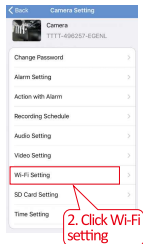
3.3. After adding the camera, click online camera to view real-time image



You can only view one camera at one time



3.4. Set WI-FI to have camera working wirelessly



Note:

1, WIFI Name (SSID) can not include special characters such as @ # \$ % & blank etc.

2, WIFI Password: length should be within 8-31 bits and no special characters as well.

3, Dual Band WIFI router: camera only supports 2.4ghz WIFI but not 5ghz. If you are using a dual band WIFI router, please either disable 5ghz or set the WIFI name be distinguishable for 2.4ghz and 5ghz so you can choose different WIFI for different device.

4, If you can not set up camera successfully by this way, please refer to "How to set up camera by AP Mode" on next page.

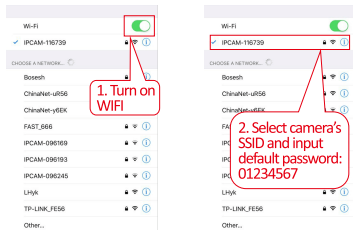
3.5. How to Set up camera by AP mode

Please connect power supply for camera, DO NOT connect network cable.

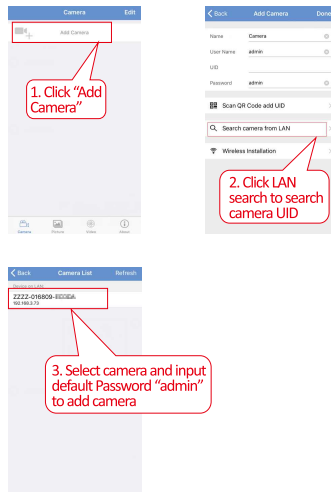
Reset camera: Long press the reset button which is next to the power port for 8seconds then camera will reset itself.

Wait about 1 min and get into the setting page of your mobile phone. Turn on WIFI, to search out camera's SSID.

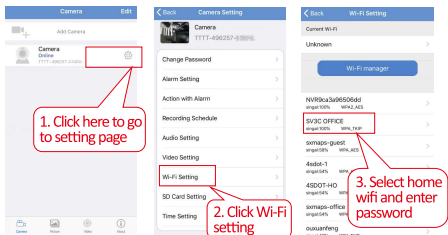
Camera's SSID in AP Mode is in a format : IPCAM-123456



After your phone is connected to the SSID, please run "CamHi" APP to connect camera



After camera is added, please go to camera settings, click “WIFI setting” and select your home WIFI to build wireless network configuration as bellow.



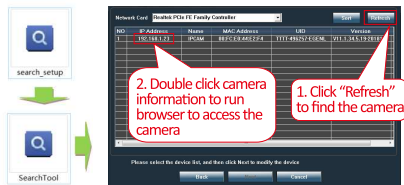
Note: If you still can not set up camera succeed, please refer to next page on how to set up camera's wifi on Internet Explorer. Or contact customer service as below:

US Email address: info-us@sv3c.com

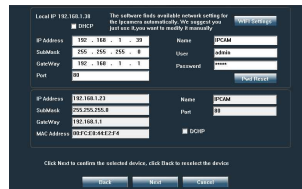
UK Email address: info-uk@sv3c.com

4. View via PC

4.1. Install “Search tool” from SV3C website: www.sv3c.com, then run it to find the cameras.



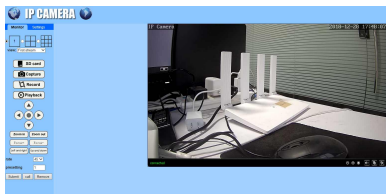
Click “Next” can modify network parameters of the camera if you need to change them.



Default username:
admin

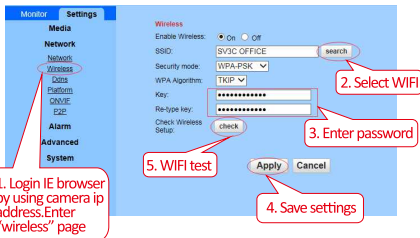
Default password:
admin

4.2. Access to the camera through browser on windows PC.



In browser you can view image and configure all parameters of camera. If you are not using IE browser, some settings will be missing.

4.3. Set WIFI via Internet Explorer on PC.



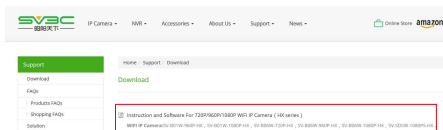
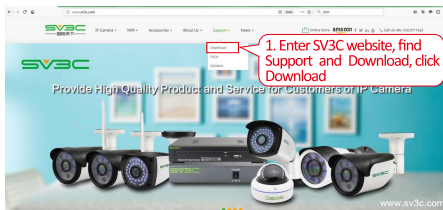
4.4. Connect and manage multiple cameras via camera's PC software on windows PC!



You can download PC software on our website:
www.sv3c.com

5. Set Micro SD card record

5.1. Follow as below steps to find installation videos for Micro sd card on SV3C website www.sv3c.com.



Installation Videos

Wireless IP Camera(HX Series)_TF card slot Video(B01W)
Wireless IP Camera(HX Series)_TF card slot Video(B06W)
Wireless IP Camera(HX Series)_TF card slot Video(B06W)

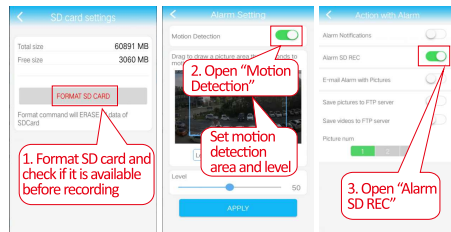
HX_Bullet wifi camera set up video

HX_Bullet wifi camera set up video

3. Find Installation Videos, download corresponding videos per your camera's model

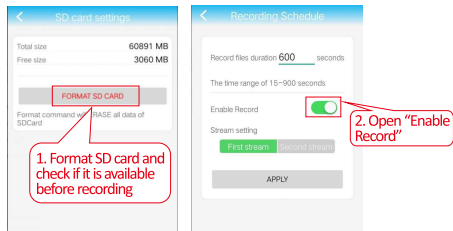
Please use SD-micro Class-10, UHS-1 or higher high speed memory card which is specially designed for surveillance camera !

5.2. Set motion detection alarm and recording on Phone app.



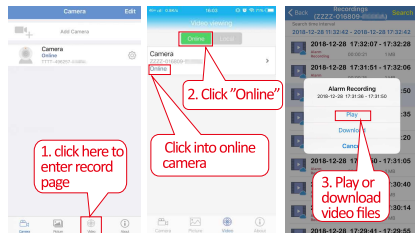
Motion detection alarm recording is recommended when the Micro SD card is small.

5.3. Set All day recording on Phone app.



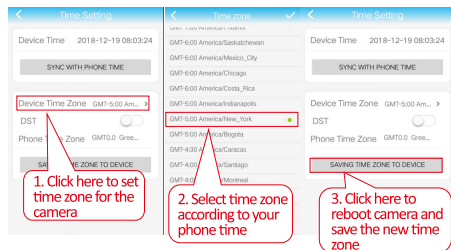
If you don't need the camera record to All Days, please turn off "Enable Record" or select "None". You can also set more detailed recording schedule on browser or PC software.

5.4. Playback recordings on Phone app.



These parameters can be set in more detail via IE browser on PC!

5.5. Set Time Zone on phone.



When your time is DST(daylight saving time), please turn on DST button!

6. Reboot and restore to factory settings

6.1. Reconnect the power to restart the camera.



6.2. Press and hold the reset button for 15 seconds and the camera will restore to factory settings.



You can also restart or reset the camera via mobile phone or PC.

7. More info

This manual is to help customers to know and use the camera quickly, For detailed instructions and video tutorials please refer to SV3C website www.sv3c.com.

This manual may have descriptions and operations that do not match the product, If you have any questions or need technical support, Please feel free to contact us.

US Email address: info-us@sv3c.com

UK Email address: info-uk@sv3c.com