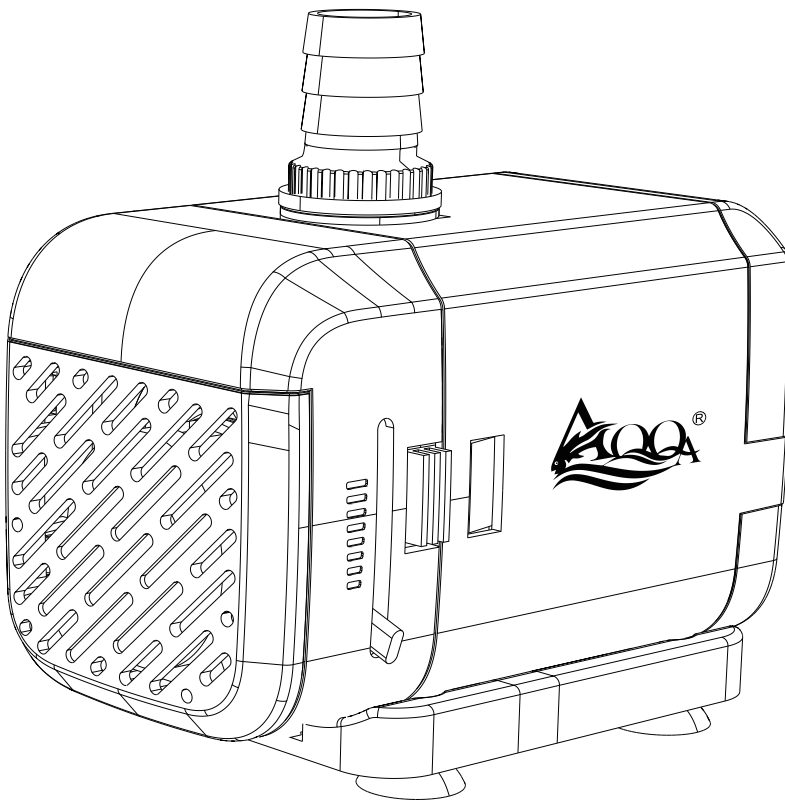


# AQ161 USER MANUAL

AQQA Aquarium Submersible Water Pump



**AQQA aquarium submersible water pump has simple appearance and practical function, suitable for a wide range of aquarium applications.**

**CAUTION:** Please note that the pump must be completely submerged in water before connecting to the power supply. The pump is only suitable for use underwater.

# 1.PRODUCT FEATURES

**Ultra quiet and powerful:** This water pump operates with minimal noise, ensuring a peaceful environment for you and your aquarium.

**Dual functionality - water circulation and aeration:** The water pump delivers both water circulation and enhanced aeration, benefiting your fish's well-being.

**Pure copper motor:** This energy-efficient pump features a noise-reducing design and is waterproof with an IP68 rating.

**Easy to disassemble and clean:** The pump's water inlet is designed for easy disassembly and cleaning.

**Dual modes:** The water pump offers dual suction modes. With a simple press of the adjustment button, you can toggle between side and bottom suction modes, enhancing its versatility.

**Adjustable flow rate:** The pump features a convenient knob that allows easy flow rate regulation.

**Versatile outlet compatibility:** The pump's screw-type water outlet accommodates various pipe diameters, ensuring compatibility with diverse pipe systems.

**Built-in temperature control protector:** The water pump is equipped with a built-in temperature control protector that automatically shuts off the device at 85°C (185°F) to prevent overheating. It will restart once cooled. To safeguard the motor, ensure the pump is fully submerged and never operate it dry. Following these guidelines will extend the pump's lifespan.

**Exterior material:** The water pump's casing is made from premium matte ABS plastic, and all models include 3 rubber suction cups for secure placement.

Perfect for aquariums, ponds, fountains, waterfalls, hydroponic systems, irrigation systems, and water features.  
Suitable for freshwater and saltwater.

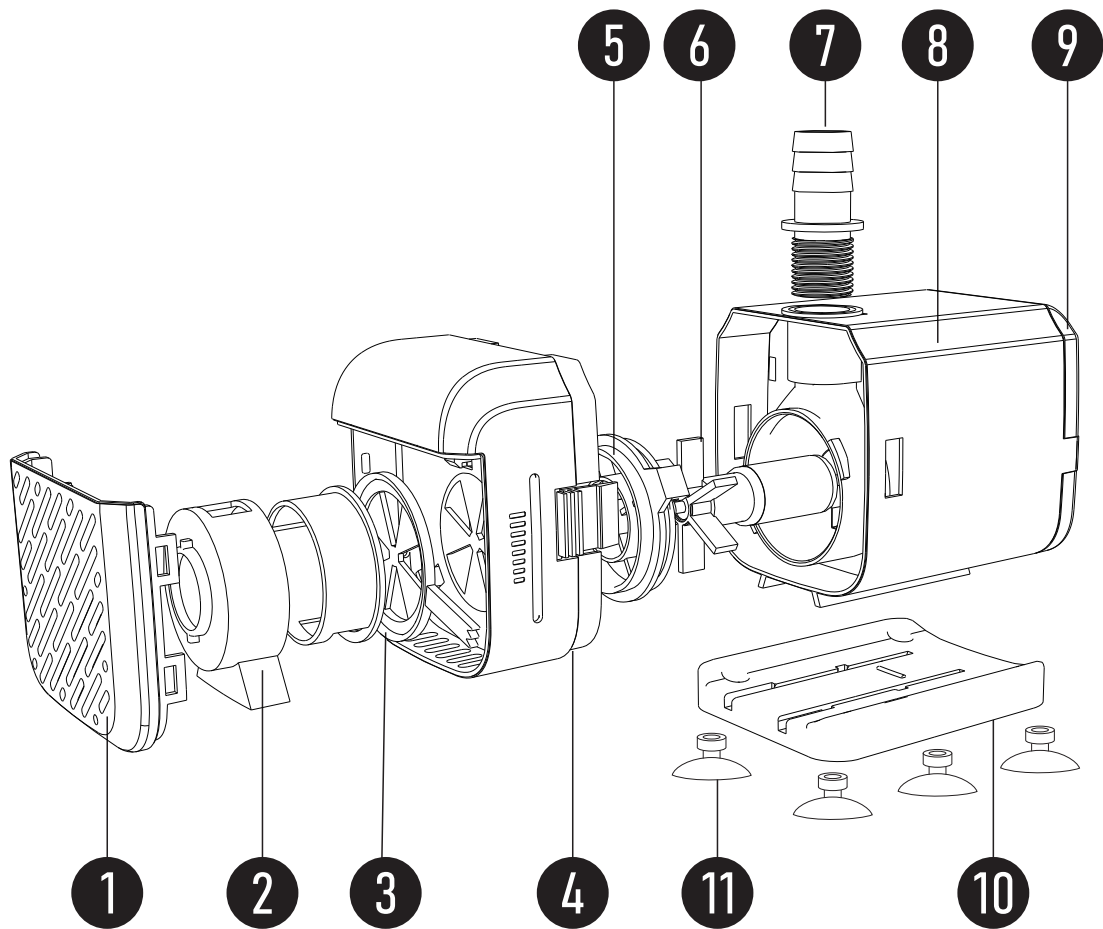
2. PRODUCT PARAMETERS

Model	AQ161 -6W	AQ161 -15W	AQ161 -20W	AQ161 -30W	AQ161 -50W
Voltage & Frequency	US STANDARD: AC110-120V/60Hz EU/UK/AU STANDARD: AC220-240V/50Hz				
Power	6W	15W	20W	30W	50W
H-Max	3.3ft (1.0m)	5.2ft (1.6m)	6.6ft (2.0m)	8.2ft (2.5m)	11.0ft (3.3m)
Flow Rate	185GPH (700L/H)	400GPH (1500L/H)	530GPH (2000L/H)	660GPH (2500L/H)	925GPH (3500L/H)
Nozzle Size	0.5" 1.2cm	0.5" 1.2cm	0.5" & 0.63" 1.3cm& 1.6cm	0.5" & 0.63" 1.3cm& 1.6cm	0.63" &0.75" & 0.98" 1.6cm&1.9cm& 2.5cm
Cord Length	6.0ft (1.83m)	6.0ft (1.83m)	6.0ft (1.83m)	6.0ft (1.83m)	6.0ft (1.83m)
Pump Dimension	3.3*1.7* 2.1inch 83X42X 54mm	3.6*2.0* 2.6inch 92X52 X65mm	3.9*2.3* 2.8inch 98X59 X72mm	4.4*2.6* 3.3inch 112X66 X83mm	4.8*3.0* 3.7inch 121X75 X95mm

### 3. PACKING LIST

1x Water pump  
4x Rubber suction cup  
1x User manual

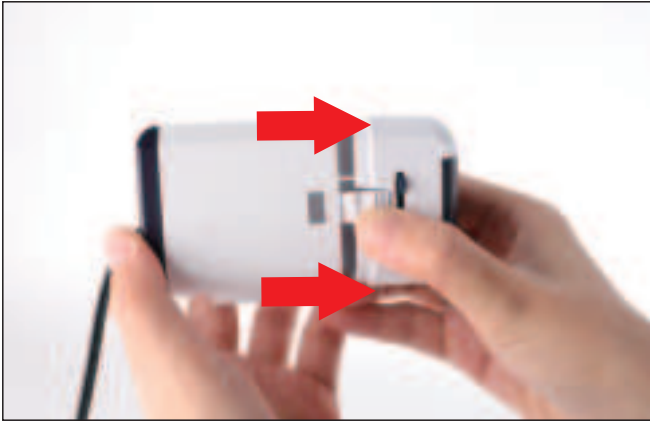
### 4. PRODUCT DIAGRAM



- 1.Sand Separator Screen
- 2.Bottom Suction Switch
- 3.Flow Rate Regulator
- 4.Sand Separator Assembly
- 5.Impeller Seat
- 6.Rotor Assembly
- 7.Water Outlet Nozzle
- 8.Pump Housing
- 9.Back Cover
- 10.Suction Cup Bracket
- 11.Suction Cup

## 5. REGULAR MAINTENANCE

**Note:** We recommend cleaning and maintaining the water pump after use to ensure it remains in good condition and runs efficiently for a long time.



1. To remove the sand separator assembly from the top of the water pump, press the latch on its side and lift the assembly upwards, following the direction indicated by the arrow.
2. Remove the suction cup bracket by sliding it out in the direction indicated by the arrow.
3. Turn the cap as indicated by the arrow, and then gently pull it outward to detach the impeller seat.

4. Remove the rotor assembly for cleaning or replacement.
5. Ensure the sealing ring is correctly positioned, as indicated in the figure.

## **6. WARNING**

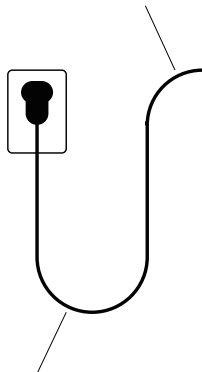
To guard against injury, basic safety precautions should be observed including the following:

1. Read and follow this user manual strictly.
2. **DANGER**-To avoid possible electric shock, special care should be taken since water is employed in the use of aquarium equipment. For each of the following situations, do not attempt to repair yourself; return the pump to an authorized service facility for service or discard the pump.
  - A. If the pump shows any sign of abnormal water leakage or RCD (or GFCI-Ground Fault Current Interrupter), unplug the power and remove the pump from water.
  - B. Carefully examine the pump after installation. It should not be plugged in if there is water on parts not intended to be wet.
  - C. Do not operate the pump if it has a damaged cord or plug, if it is malfunctioning or if it is dropped or

damaged in any manner. The power cord of this pump cannot be replaced, if the cord is damaged, the pump should be discarded.

D.To avoid the possibility of the pump plug getting wet, position aquarium stand and tank to one side of a wall mounted receptacle to prevent water from dripping onto the receptacle or plug. A “drip loop”, shown in the figure below, should be arranged by the user for each cord connecting the pump to the receptacle. The “drip loop” is the part of the cord below the level of the receptacle, or the connector. If an extension cord is used, to prevent water traveling along the cord and coming in contact with the receptacle. If the plug or receptacle does get wet, DO NOT unplug the cord. Disconnect the fuse to the circuit breaker that supplies power to the pump. Then unplug and examine for the presence of water in the receptacle.

## **POWER CORD**



## **DRIP LOOP**



3.Close supervision is necessary when the pump is used near children.

4.This pump is not allowed to use by persons (including children) with reduced physical, sensory or mental capabilities, or lack of experience and knowledge, unless they have been given supervision or instruction concerning use of the pump by a person responsible for their safety.

5.To avoid injury, do not contact moving parts or hot parts and so on.

6.Always unplug the pump from the outlet when not in use, before putting on or taking off parts, and before maintenance or placing hands in the water. Never yank the cord to pull plug from outlet. Grasp the plug and pull to disconnect.

7.Do not use the pump for other than intended use. The use of attachments not recommended or sold by the appliance manufacturer may cause an unsafe condition.

8.Do not install or store the pump where it will be exposed to the weather or to temperatures below freezing. This pump is suitable for use in water temperatures 40~ 95°F.



9. Do not submerge more than 3ft of water depth.

10. Do not run dry or out of water.

11. Only use in freshwater or saltwater, do not use the pump in other liquids.

12. Make sure the pump is securely installed before operating it.

13. Read and observe all the important notices on the pump.

14. If an extension cord is necessary, a cord with a proper rating should be used. A cord rated for less amperes or watts than the appliance rating may overheat. Care should be taken to arrange the cord so that it will not be tripped over or pulled.

15. The pump is intended FOR HOUSEHOLD USE ONLY. Do not use or mount this pump in such a way that the top vents are restricted or blocked. These vents are necessary to avoid overheating and ensure safe operating temperatures.

16. Due to all the pumps need to be professional water testing by manufacturer before shipment, if the water pump you received with a little water, please

don't worry, the little water was left from professional water testing, it is a normal phenomenon. It is new and normal pump.

17. SAVE THIS USER MANUAL.

## **7. MAINTENANCE AND TROUBLESHOOTING**

To clean the pump, proceed as follows:

1. Remove the water intake cover, the sealing cover and the impeller.
2. Use a small brush or a jet of water to remove any debris that may be present.

If the pump is not working, please check the following points:

- Check the power supply. Please try to connect the pump to another socket to ensure it has power. Do not plug in the pump until it is submerged.
- Check the water outlet and tube of the pump for any blockage caused by dirt.
- Check the water inlet cover to ensure it is not clogged by debris.
- Remove the water inlet cover and check the impeller. Turn the rotor to ensure that there is no damage or blockages.
- Regular monthly maintenance can extend the service life of the pump. Clean the rotor and remove all dirt deposits.

**Note:** If the pump is to be operated indoors, the socket outlet should be equipped with a leakage current protection device, and the leakage current must not exceed 30 mA (The installation of the leakage current protection device must be carried out by the consumer)

## **8. DISPOSAL**

Do not dispose this product as unsorted municipal waste. Collection of such waste separately for special treatment is necessary. This product must not be disposed together with the domestic waste. This product has to be disposed at an authorized place for recycling of electrical and electronic appliances. By collecting and recycling waste, you help save natural resources, and make sure the product is disposed in an environmentally friendly and healthy way.



## 9. AQQA LIMITED MANUFACTURER'S WARRANTY

We offer the end user of this product a manufacturer warranty of 2 years from the date of sale if this product was purchased from an AQQA® -authorised specialist dealer

Retain receipt for any future warranty claim.

Conditions apply. Products are guaranteed by AQQA® Aquatic Supplies to the original purchaser against defective material and workmanship under normal use for a period up to 2 years from the date of the original purchase through an Authorized Dealer.

Refer to the User Manual included with your product for specific warranty details.

### **Products have no warranty if:**

- 1.) The product has been serviced, modified or tampered with by anyone other than AQQA® Aquatic Supplies.
- 2.) The product has been abused or damaged (including broken or cracked bulbs), and/or.
- 3.) The product has been transported without proper packaging.
- 4.) The product was purchased from an Unauthorized Reseller.

## **WARRANTY LIABILITY DISCLAIMER**

In no event will AQQA® be liable for any consequential or incidental damages, including but not limited to, lost aquatic life, personal injury, property damage, equipment damage, lost profits, lost wages, lost savings, lost income, etc., arising out of the use of any AQQA® products.

### **1.0. Terms and Conditions of Warranty.**

- 1.1. AQQA® warrants to the purchaser, for 2 years from date of original purchase through an Authorized AQQA® Reseller, free to repair or replace parts where fault is found due to defective materials or faulty workmanship and where goods do not operate in accordance with the instructions.
- 1.2. All claims for repair or replacement must be made at place of purchase.
- 1.3. Only the direct purchaser is entitled to warranty claims against us and these are not transferable without our consent.
- 1.4. The original and dated Proof of Purchase (receipt) must be supplied with all goods claims. Please also provide this Guarantee where possible.
- 1.5. Wear parts (e.g.: seals, suction devices, axes, pump wheels, light sources, pH electrodes, filter media, such as filter cartridges, as well as UVC burners), glass damage and the opening of the product, as well as structural changes or the use of non-AQQA® original parts are excluded from the guarantee.

- 1.6. All goods subject to claim under Guarantee should be prepared for transportation in the original packaging or other comparable packaging which offers the same degree of protection and AQQA<sup>®</sup> must incur no costs from the shipment.
- 1.7. Where claims on inspection reveal goods are in normal working order, AQQA<sup>®</sup> will request reimbursement of all reasonable costs incurred.
- 1.8. Warranty claims do not exist in the case of only insignificant deviations from the agreed or customary condition or usability, e.g. insignificant deviations in colour, dimensions and/or quality or performance characteristics of the products.
- 1.9. Our warranty obligation extends only to the delivery of newly manufactured products. Unless otherwise agreed, used products are sold as seen, excluding any warranty.

## 10. CONTACT INFORMATION

Company Name: Shenzhen Aiku Pet Technology Co., Ltd

Add: Room 501, No.20, Lane 1, Lishipai, Dafapu Community

Bantian Street, Longgang District, Shenzhen

Guangdong. 518000

Email: [service@aqqapet.com](mailto:service@aqqapet.com)

**Website:** <http://www.aqqapet.com>



@AQQA Aquarium



Company: E-CrossStu GmbH  
Address: Mainzer Landstr.69, 60329  
Frankfurt am Main  
Email: E-crossStu@web.de  
Nr.202504727907



Company Name: YH Consulting Limited  
Address: C/O YH Consulting Limited Office  
147 Centurion House, London Road  
Staines-upon-Thames, Surrey, TW18 4AX  
Email: H2YHUK@gmail.com  
Tel: +44 07514-677868  
No.202504725766

**UK  
CA**



**MADE IN CHINA**