

User Manual

GATEWAY AND SMART PLUG G1

works with alexa

works with Hey Google





Tutorial Video

Scan the QR code and search G1 to get the video.

1. LED Indicator Status

Operation	Status
Plug in the power	The indicator turns on. The device functions as a gateway and can also supply power to other devices.
Press the power button	The indicator turns off. The device now operates in gateway-only mode.
Press and hold the power button for 5 seconds	The indicator flashes. The device enters pairing mode.

2. How to connect to G1 Gateway

Step1: Download KK Home App

Scan the QR code to download the KK Home App from the App Store or Google Play.





Download on the App Store

GET IT ON Google Play

IMPORTANT:

1.Only compatible with KK Home App.

2.Please add the G1 gateway into the KK Home App, and then add the smart lock.

Step2: Create an account for the App.

If you are an existing user: You can integrate this device into your KK Home App for easy control.  
If you are a new user: Please click the “Sign Up” button to create your account.

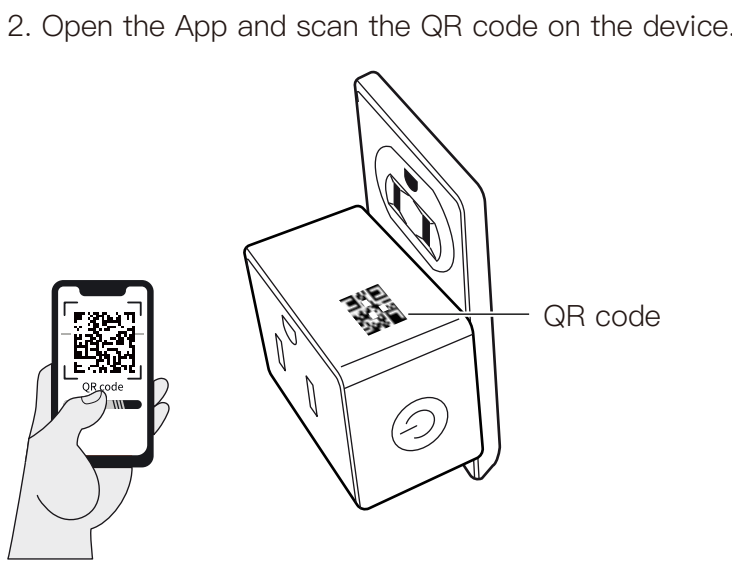
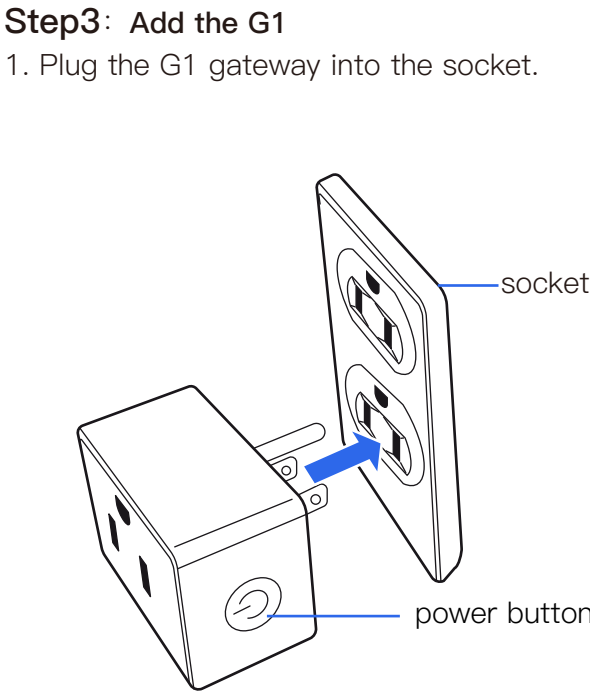
Email Address

Password

[Forgot Password ?](#)[Sign Up](#)

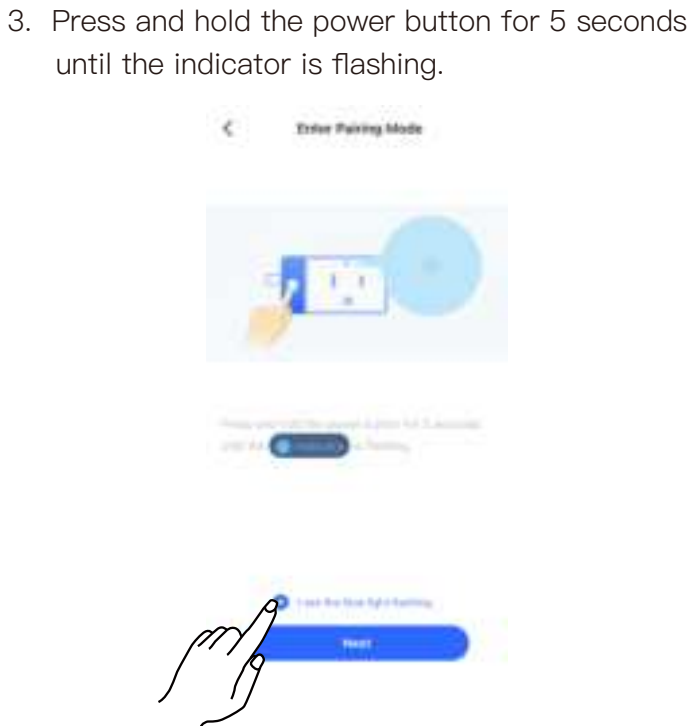
Log In

- Fill in your email ID
- Enter the verification code received in your email inbox
- Set up an account password
- Create an account successfully

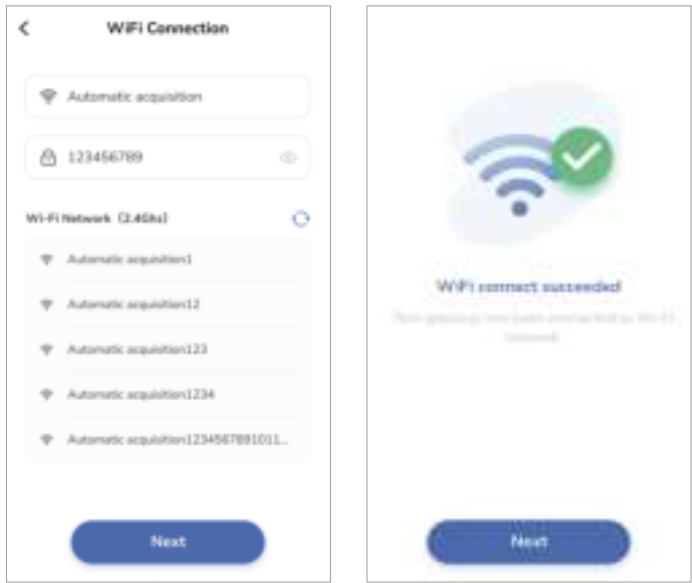


IMPORTANT:

Keep the G1 gateway within 49ft (15 meters) of your home router



4. Set up Wi-Fi connection, it only works with 2.4GHz Wi-Fi network.



Step4: Add the smart lock in the App.

Please refer to the App guide for the smart lock.  
Note: Before adding a smart lock in the App, please make sure the G1 gateway has been added successfully.

Technical parameters

Maximum current: 10A

Rated voltage: 100–240V

Rated power: 2200W

Input voltage: 100–240V

IMPORTANT:

Keep the G1 gateway within 32ft (10 meters) of the door lock

Troubleshooting

What should I do if the gateway fails to pair?

1. Make sure your router is working properly, connected to the internet, and has a strong signal. You can try testing with a different Wi-Fi network.

2. Ensure that the 2.4GHz Wi-Fi band on your router is enabled. The gateway only supports 2.4GHz networks. Enabling this band will not affect the operation of your other connected devices.

3. Press and hold the power button for 5 seconds until the indicator starts flashing. The device will enter pairing mode. Then try reconnecting.

If you need further assistance, feel free to contact our customer support team at +1 (855) 400-3853.

The gateway has been added successfully, but it can't be controlled remotely. What should I do?

1. Please review if you have added the G1 gateway before adding the smart lock.

2. Please make sure the distance between the gateway and the smart lock is within 32 feet (10 meters).

How many smart locks can one gateway support?

One gateway can support up to 3 smart locks.

FCC Statement

This equipment has been tested and found to comply with the limits for a Class B digital device, pursuant to part 15 of the FCC Rules. These limits are designed to provide reasonable protection against harmful interference in a residential installation. This equipment generates, uses and can radiate radio frequency energy and, if not installed and used in accordance with the instructions, may cause harmful interference to radio communications. However, there is no guarantee that interference will not occur in a particular installation. If this equipment does cause harmful interference to radio or television reception, which can be determined by turning the equipment off and on, the user is encouraged to try to correct the interference by one or more of the following measures:

- Reorient or relocate the receiving antenna.
- Increase the separation between the equipment and receiver.
- Connect the equipment into an outlet on a circuit different from that to which the receiver is connected.

- Consult the dealer or an experienced radio/TV technician for help.

Caution: Any changes or modifications to this device not explicitly approved by manufacturer could void your authority to operate this equipment.

This device complies with part 15 of the FCC Rules. Operation is subject to the following two conditions: (1) This device may not cause harmful interference, and (2) this device must accept any interference received, including interference that may cause undesired operation.

RF Exposure Information

This equipment complies with FCC radiation exposure limits set forth for an uncontrolled environment. This equipment should be installed and operated with minimum distance 20cm between the radiator and your body.

ISED Statement

English: This device contains licence-exempt transmitter(s)/receiver(s) that comply with Innovation, Science and Economic Development Canada's licence-exempt RSS(s). Operation is subject to the following two conditions:

(1) This device may not cause interference.

(2) This device must accept any interference, including interference that may cause undesired operation of the device.

The digital apparatus complies with Canadian CAN ICES-3 (B)/NMB-3(B).

French: Cet appareil contient des émetteurs/récepteurs exempts de licence qui sont conformes aux RSS exemptés de licence d'Innovation, Sciences et Développement économique Canada. L'exploitation est soumise aux deux conditions suivantes :

(1) Cet appareil ne doit pas provoquer d'interférences.

(2) Cet appareil doit accepter toute interférence, y compris les interférences susceptibles de provoquer un fonctionnement indésirable de l'appareil.

l'appareil numérique du ciem conforme canadien peut – 3 (b) / nmb – 3 (b).

This device meets the exemption from the routine evaluation limits in section 2.5 of RSS 102 and compliance with RSS 102 RF exposure, users can obtain Canadian information on RF exposure and compliance.

cet appareil est conforme à l'exemption des limites d'évaluation courante dans la section 2.5 du cnr – 102 et conformité avec rss 102 de l'exposition aux rf, les utilisateurs peuvent obtenir des données canadiennes sur l'exposition aux champs rf et la conformité.

This equipment complies with Canada radiation exposure limits set forth for an uncontrolled environment.

Cet équipement est conforme aux limites d'exposition aux rayonnements du Canada établies pour un environnement non contrôlé.

This equipment should be installed and operated with minimum distance 20cm between the radiator & your body.

Cet équipement doit être installé et utilisé à une distance minimale de 20 cm entre le radiateur et votre corps.