

For Honda Civic 2006-2011 / C7170

Central Control Disassembly and Operation
Post-installation rendering

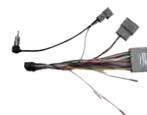


TOOLS REQUIRED FOR DISASSEMBLY

1. Wires 2. Installation tools



1



2



Disassembly:

1. Use a pry bar to open the original car frame below the steering wheel. Loosen the screws securing the original car frame above the steering wheel. Pull the steering wheel downward.



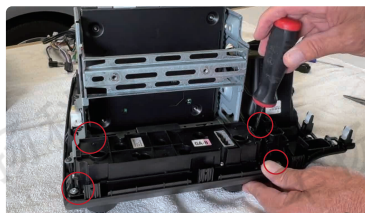
2. Use a pry bar to open the original car frame above the steering wheel. Remove the frame. Unplug the wires connected to the original car.



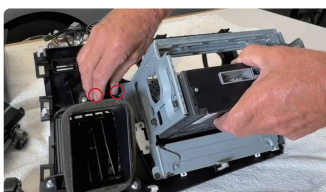
3. Use a pry bar to open the decorative panel inside the storage box. Loosen the two screws securing the original car radio below. Remove the original car radio and unplug the wires connected to the vehicle.



4. Pry off the Knob kit from the original car radio. Loosen the four screws on both sides securing the air conditioning control panel. Remove the air conditioning control panel. Unscrew the two screws securing the emergency stop button. Take off the emergency stop button.



5. Loosen the two screws securing the passenger airbag button and remove the button. Unscrew the three screws securing the air conditioning vent and remove the vent.



PROPOSE

Before starting the replacement job, you should prepare tools such as a plastic pry tool and a screwdriver, and make sure the car's power is cut off during the installation.

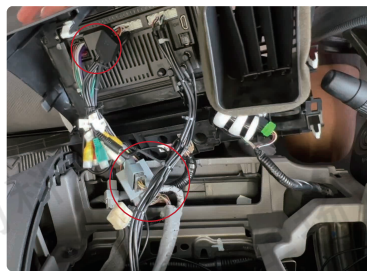
Installation

(If the wiring harness does not match, please contact customer service to request the correct wiring harness)

1. Install the radio onto the new frame. Tighten the four screws on both sides to secure the radio. Install the emergency stop button onto the new frame and tighten the screws on both sides. Secure the air conditioning control panel onto the new frame and tighten the four screws on both sides.



2. Install the knob kit in the designated positions, then mount the air conditioning vent onto the new frame, tighten the three screws on both sides, and proceed to connect the wiring between the new radio and the original vehicle.



3. Install the new radio in its designated position, reattach the original car frame above the steering wheel, tighten the screws below, then reassemble the original car frame below the steering wheel to complete the installation of the new radio.



COMPARATION

Effect of Installation



GENTLE REMINDERS

Due to the complexity of the product structure, you may encounter some problems during installation. If you still have any questions about the installation after reading this manual, you can contact us and we will respond to you within 24 hours. Don't worry; we will do our best to solve the problem for you until you are satisfied.

After-sales email: cheyang728@gmail.com

WARN FCC WARNING

This device complies with Part 15 of the FCC Rules. Operation is subject to the following two conditions:

- (1) This device may not cause harmful interference.
- (2) This device must accept any interference received, including interference that may cause undesired operation