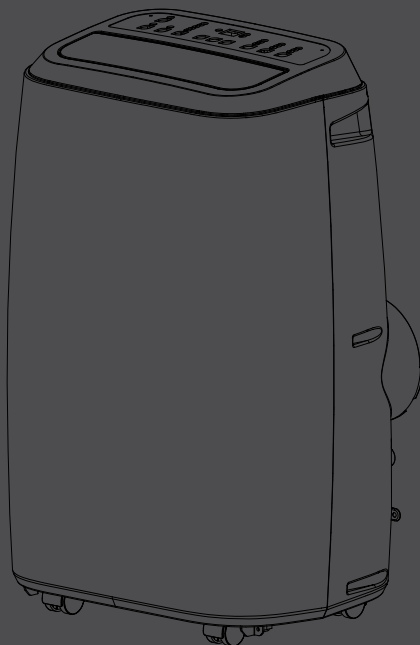


PORTABLE AIRCON

HYD14KPACWA

HYD18KPACWA

Wi-Fi Function User Manual



CONTENTS

Statements	3
Wi-Fi Module specification and Operation guideline	4
Download and Install the App	5
Registration	6
Login	7
Add device	9
Air conditioner control	15
Notice	17
Troubleshooting	17

Statements

Federal Communication Commission Interference Statement

This device complies with part 15 of the FCC Rules. Operation is subject to the following two conditions:

(1) This device may not cause harmful interference, and (2) this device must accept any interference received, including interference that may cause undesired operation.

Any Changes or modifications not expressly approved by the party responsible for compliance could void the user's authority to operate the equipment.

Note: This equipment has been tested and found to comply with the limits for a Class B digital device, pursuant to part 15 of the FCC Rules. These limits are designed to provide reasonable protection against harmful interference in a residential installation. This equipment generates uses and can radiate radio frequency energy and, if not installed and used in accordance with the instructions, may cause harmful interference to radio communications. However, there is no guarantee that interference will not occur in a particular installation. If this equipment does cause harmful interference to radio or television reception, which can be determined by turning the equipment off and on, the user is encouraged to try to correct the interference by one or more of the following measures:

- Reorient or relocate the receiving antenna.
- Increase the separation between the equipment and receiver.
- Connect the equipment into an outlet on a circuit different from that to which the receiver is connected.
- Consult the dealer or an experienced radio/TV technician for help.

FCC Radiation Exposure Statement

This equipment complies with FCC radiation exposure limits set forth for an uncontrolled environment.

This equipment should be installed and operated with minimum distance 20cm between the radiator & your body.

RF Exposure: A distance of 20cm shall be maintained between the antenna and users, and the transmitter module may not be co-located with any other transmitter or antenna.

ISED Statement

Innovation, Science and Economic Development Canada ICES-003 Compliance Label:

CAN ICES-3 (B)/NMB-3(B)

This device contains licence-exempt transmitter(s)/receiver(s) that comply with Innovation, Science and Economic Development Canada's licence-exempt RSS(s). Operation is subject to the following two conditions:

1. This device may not cause interference.
2. This device must accept any interference, including interference that may cause undesired operation of the device.

This equipment complies with ISED RSS-102 radiation exposure limits set forth for an uncontrolled environment. This equipment should be installed and operated with a minimum distance of 20cm between the radiator and any part of your body.

étiquette de conformité à la NMB-003 d'Innovation, Sciences et Développement économique Canada: CAN ICES-3 (B)/NMB-3 (B)

L'émetteur/récepteur exempt de licence contenu dans le présent appareil est conforme aux CNR d'Innovation, Sciences et Développement économique Canada applicables aux appareils radio exempts de licence. L'exploitation est autorisée aux deux conditions suivantes :

1. L'appareil ne doit pas produire de brouillage;
2. L'appareil doit accepter tout brouillage radioélectrique subi, même si le brouillage est susceptible d'en compromettre le fonctionnement.

Pour se conformer aux exigences de conformité CNR 102 RF exposition, une distance de séparation d'au moins 20 cm doit être maintenue entre l'antenne de cet appareil et toutes les personnes.

Wi-Fi Module specification and Operation guideline

1. Minimum specifications on a Smart phone:

Android 5.0 version or higher

IOS 9.0 version or higher

2. Basic parameters for Wi-Fi module

Parameters	Details
Network frequency	2.400 - 2.4835GHz
Standards of WLAN	IEEE 802.11 b/g/n (channels 1-14, channels 1-13 for EU/AU, channels 1-11 for US/CA)
Protocol stack support	IPv4/TCP/UDP/HTTPS/TLS/DNS
Security support	WEP/WPA/WPA2/AES128
Network type support	STA/AP/STA+AP
Max. RF Power	18.5 dbm
Blue tooth frequency	2.402 - 2.480GHz
Blue tooth RF Power	9 dbm

3.Operation guideline. For reference, see simple guideline instructions below.

Operation Steps	Operation Items	New Account	Re-install APP (registered before)
Step 1	Download and Install APP	YES	YES
Step2	Registration Account	YES	NO
Step 3	Login	YES	YES
Step 4	Add Device to control	YES	Registered Device will remain.

Note:

If you registered the account and added device before, when you re-install the APP again and login, the added device will remain .

Download and Install the App



Smart Life

For Android smart phone

Method1: Please scan the QR code with a browser scanner, download and install the APP.

Method2: Open the Google "Play Store" on your smart phone and search "Smart Life", download and install the APP.



For IOS smart phone

Method1: Please scan the QR code and follow the tips to get into "AppStore", download and install the APP.

Method2: Open the Apple "AppStore" on your smartphone and search "Smart Life ", download and install the APP.

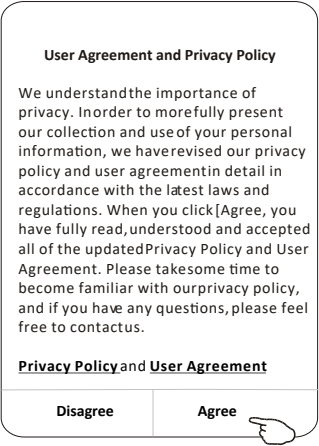
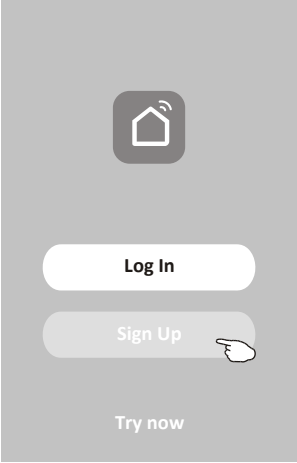


Note:

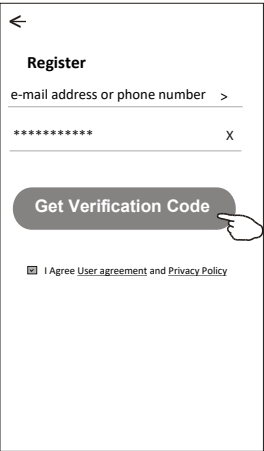
Please enable the permissions of Storage/Location/Camera for this APP when installing. Otherwise it will have some problems when operating.

Registration

1. If you don't have any account please tap button "Sign up".
2. Read the Privacy Policy and tap "Agree".



3. Tap ">" and choose the country.
4. Enter either your mobile phone number or email address.
5. Tap the button "Get Verification Code".

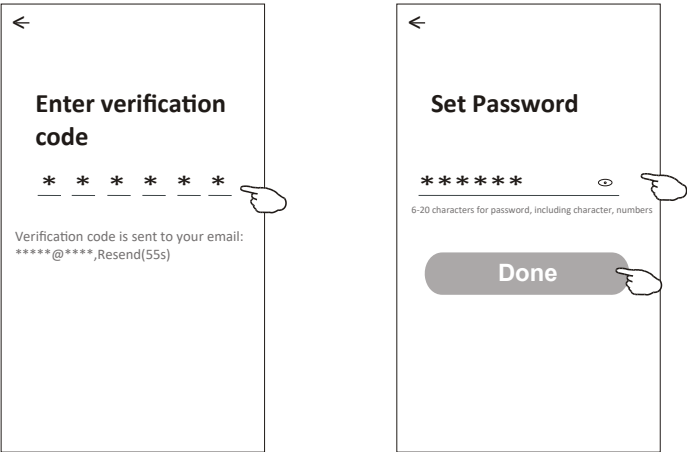


Search the country or slide the screen up/down to find and choose the Country.



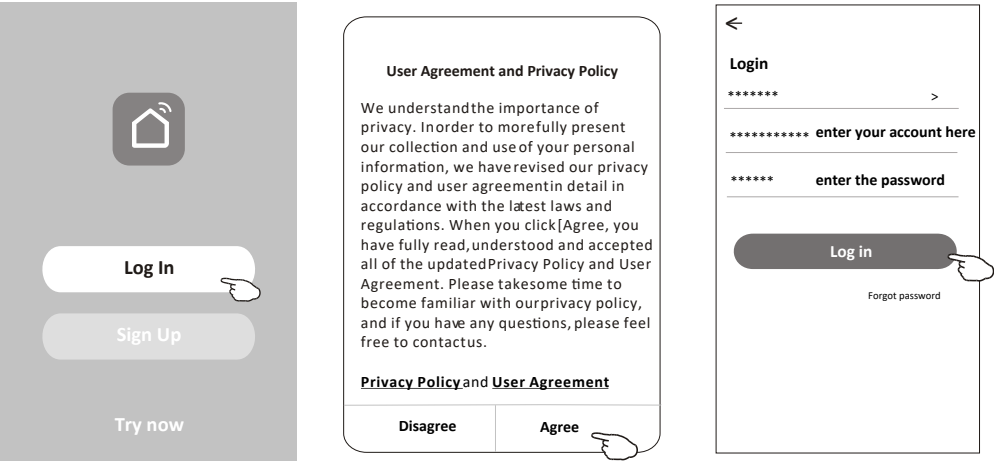
Registration

- 6. Enter the verification code you received either your mobile phone number or email address.
- 7. Set the Password with 6-20 characters including characters and numbers.
- 8. Tap "Done".



Login

- 1. Tap "Log in".
- 2. Read the Privacy Policy and tap "Agree".
- 3. Enter your registered account and password.
- 4. Tap "Log in" button.



Login

Forgot the password

If you forgot the password or you want to reset the password, operate as below:

1. Tap "Forgot password".
2. Enter your account(e-mail address or mobile phone number) and tap button "Get Verification Code".
3. Enter the verification code received by your e-mail or mobile phone.
4. Set the new password and tap button "Done".

<

Login

***** >

Log in

Forgot password

<

Forgot password

***** >

***** enter your account here

Get Verification Code

<

Enter verification code

* * * * *

Verification code is sent to your email:
*****Resend(55s)

<

Set Password

* * * * *

6-20 characters for password, including character, numbers

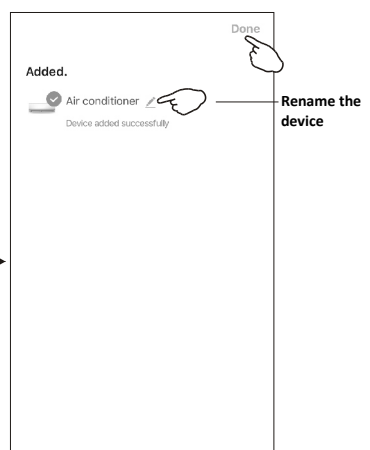
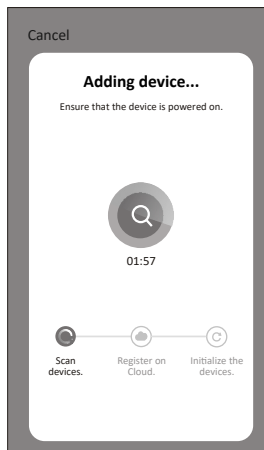
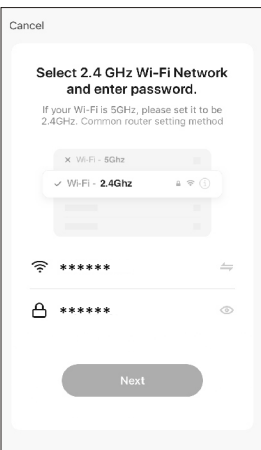
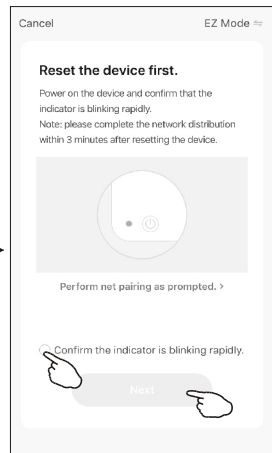
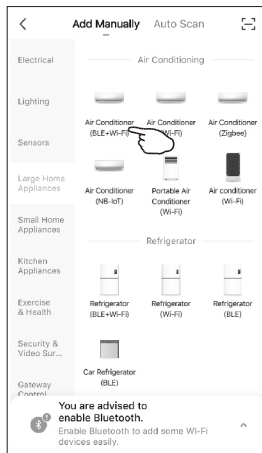
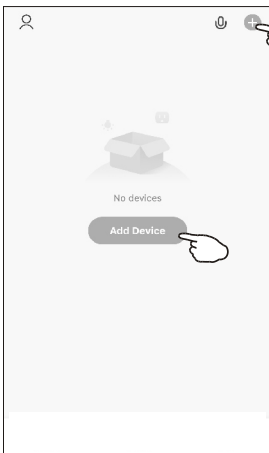
Done

Add device

There are 4 methods to add the device.

1-EZ mode

1. Power on the indoor unit, no need to launch the air conditioner.
2. Click "+" in the upper right corner of the "Home" screen or tap "Add device".
3. Tap on the top left "Add Manually" option. On the left side scroll down to "Large Home Appliances". Select the type of device as "**Air Conditioner (BLE+Wi-Fi)**".
4. Press the "Display" button on the remote controller 6 times within 8 seconds until the device beeps twice and the indoor unit display shows "CF" code. Then press the button at the bottom of the screen to confirm that the device has been reset.
5. Input the password of the Wi-Fi that your smartphone is using (2.4Ghz only), then tap "Next".
6. You can see the connecting process, at the same time "PP", "SA", "AP" shining in turn on the indoor display. "PP" means "Searching the router", "SA" means "connected to the router", "AP" means "connected to the server"

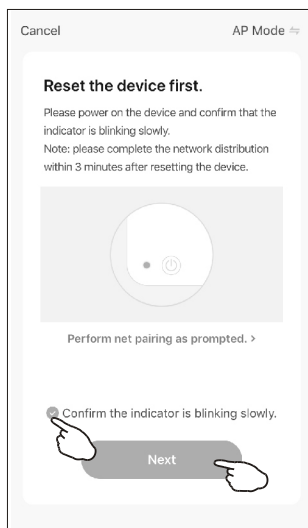
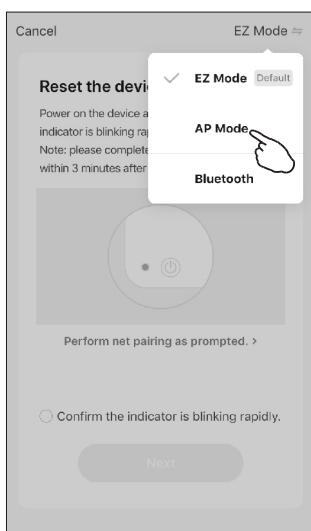
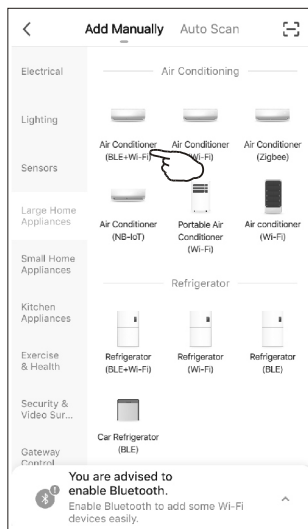
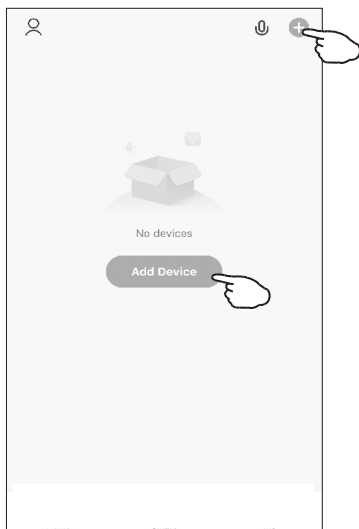


Add device

There are 4 methods to add the device.

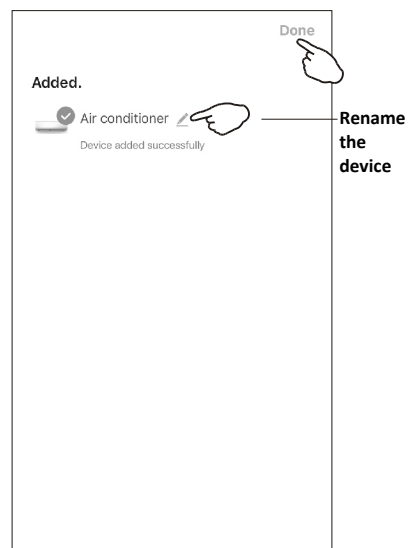
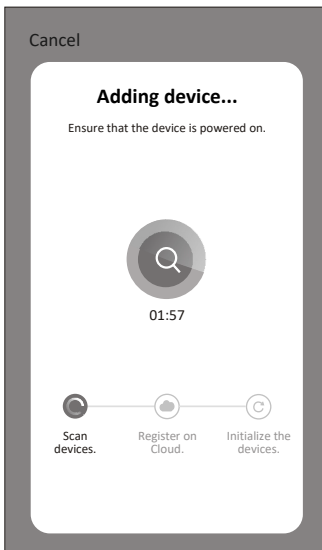
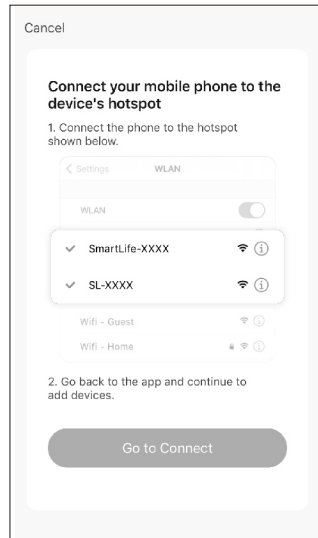
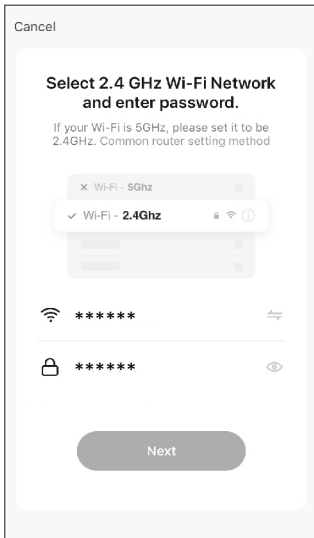
2-AP mode

1. Power on the indoor unit, no need to launch the air conditioner.
2. Click "+" in the upper right corner of the "Home" screen or tap "Add device".
3. Select the type of device as "Air Conditioner (BLE+Wi-Fi)".
4. Tap ⇨ in the upper right corner and choose "AP Mode". Press the "Display" button on the remote controller 6 times in the time of 8 seconds until the device beeps twice and the indoor unit display shows "CF" code. Then press the button at the bottom of the screen to confirm.



Add device

5. Input the password of the Wi-Fi that your smartphone is using (2.4Ghz only), then tap "Next".
6. Read the instruction carefully and tap "Go to Connect".
7. In the wifi setting screen of your smart phone, select "SmartLife-****" or "SL-****", and tap "◀".
8. You can see the connecting process, at the same time "PP", "SA", "AP" shining in turn on the indoor display. "PP" means "Searching the router", "SA" means "connected to the router", "AP" means "connected to the server"

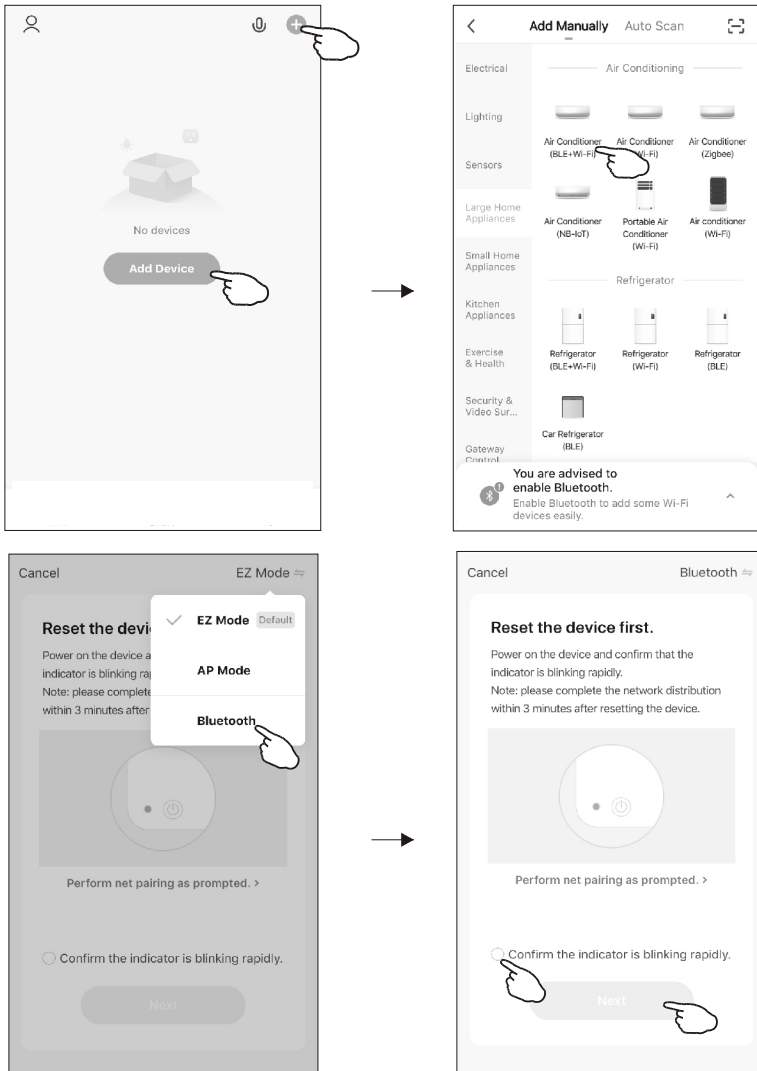


Add device

There are 4 methods to add the device.

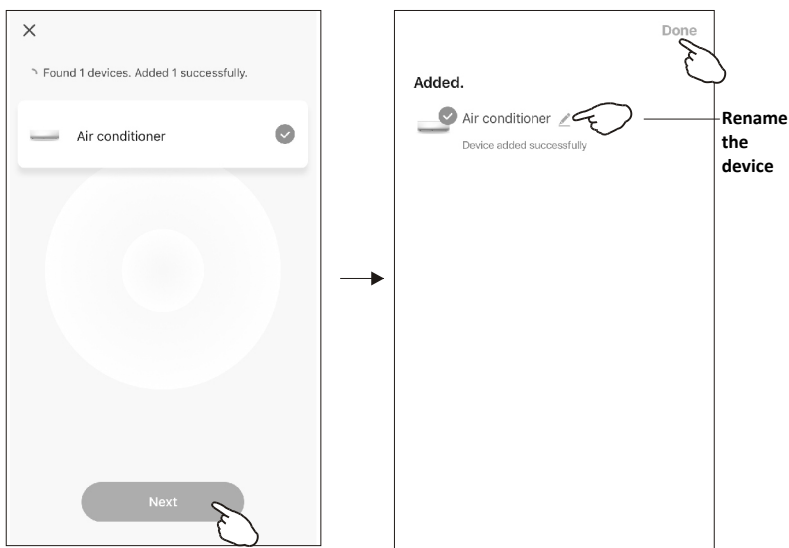
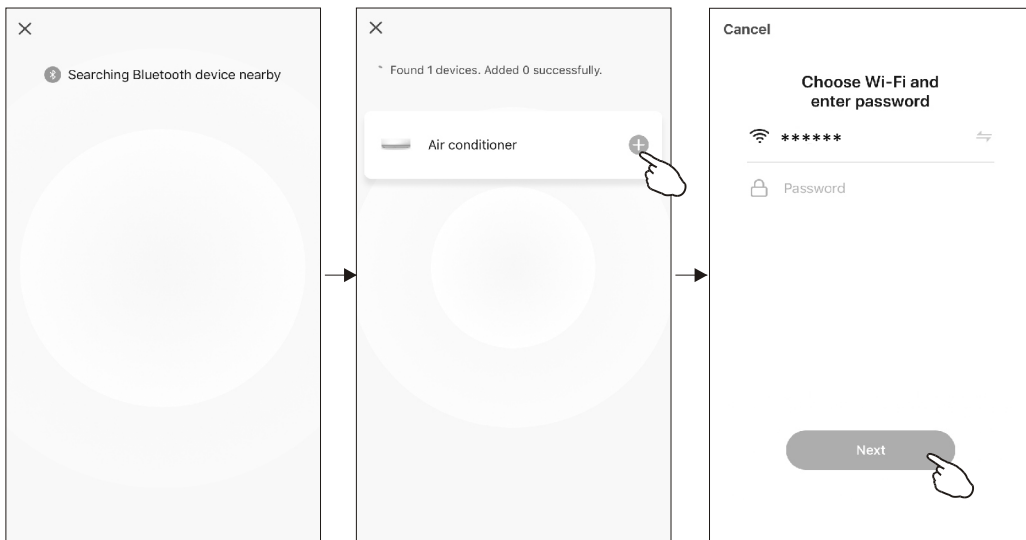
3-Bluetooth mode

1. Power on the indoor unit, no need to launch the air conditioner.
2. Click "+" in the upper right corner of the "Home" screen or tap "Add device".
3. Select the type of device as "Air Conditioner (BLE+Wi-Fi)".
4. Tap ⇐ in the upper right corner and choose "Bluetooth" mode . Press the "Display" button on the remote controller 6 times in the time of 8 seconds until the device beeps twice and the indoor unit display shows "CF" code. Then press the button at the bottom of the screen to confirm.



Add device

5. The app will start searching Bluetooth device. After device found, tap "+" to add the device.
6. Input the password of the Wi-Fi that your smartphone is using (2.4Ghz only), then tap "Next".
7. Once the connection is completed, you device will appear on the screen. Press Next button and then Done button to complete the process.
8. You can see the connecting process, at the same time "PP", "SA", "AP" shining in turn on the indoor display. "PP" means "Searching the router", "SA" means "connected to the router", "AP" means "connected to the server"

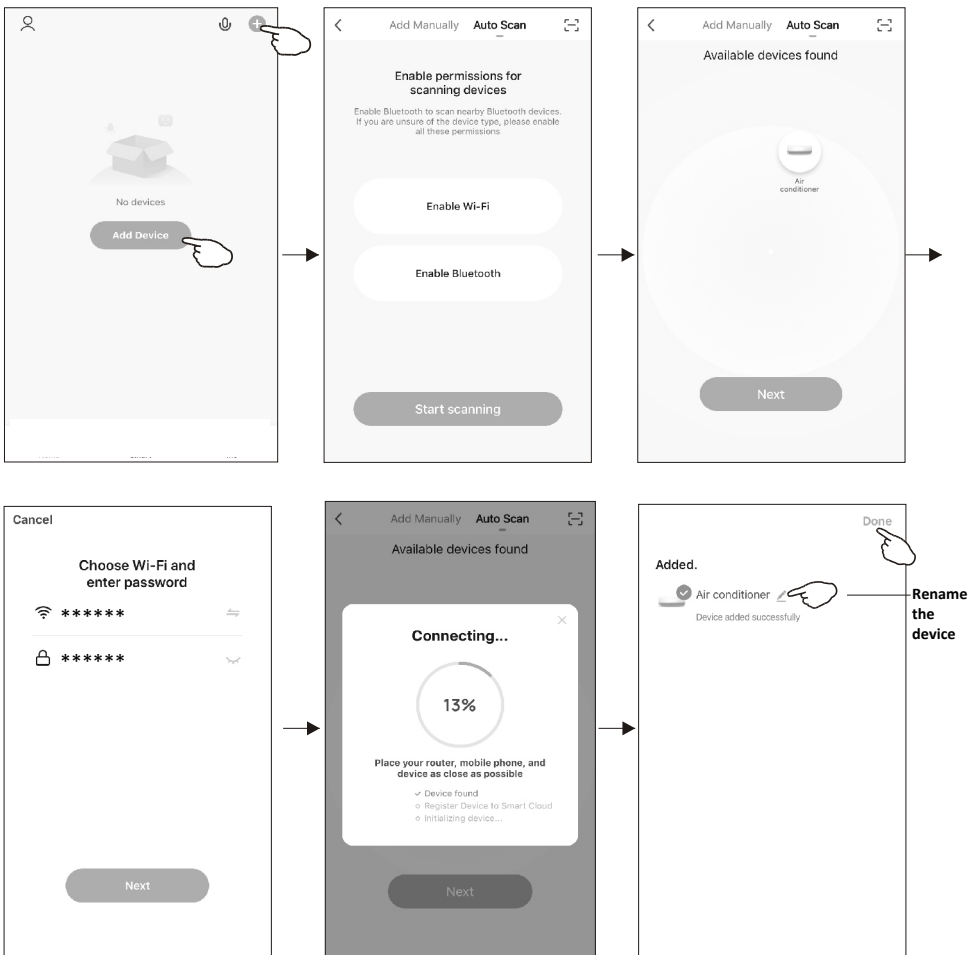


Add device

There are 4 methods to add the device.

4-Auto-scan mode

1. Power on the indoor unit, no need to launch the air conditioner.
2. Click "+" in the upper right corner of the "Home" screen or tap "Add device".
3. Select "Auto Scan" option on the top right hand corner of the screen. Press "Enable Wi-Fi" or "Enable Bluetooth" or both button to launch the connection procedure.
4. Press the "Display" button on the remote controller 6 times within 8 seconds until the device beeps twice and the indoor unit display shows "CF" code. The app will start auto-scanning. Once the searching is completed you should see the air conditioner found and appearing as "Available devices found". Press "Next".
5. Input the password of the Wi-Fi which is the same as your smart phone connected, then tap "Next".
6. The connecting of the device will start.
7. Once the connection is completed, you device will appear on the screen. Press Done button to complete the process.

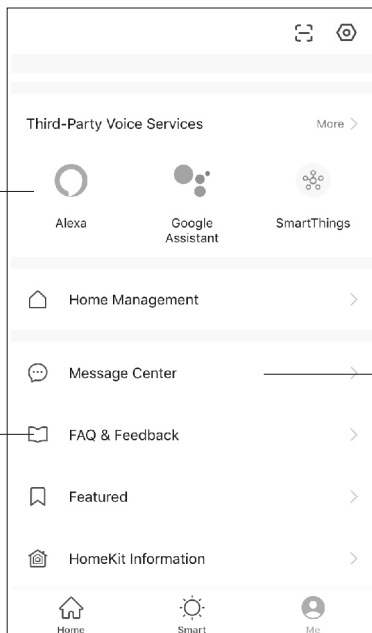


Air conditioner control

Once your air conditioner is successfully linked up to your network, you can control it from your phone.

Link to Alexa or Google Home for voice control.

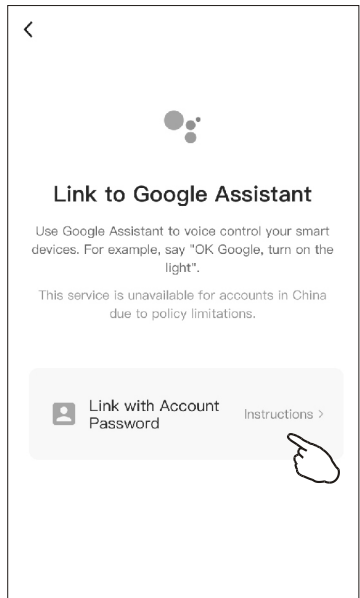
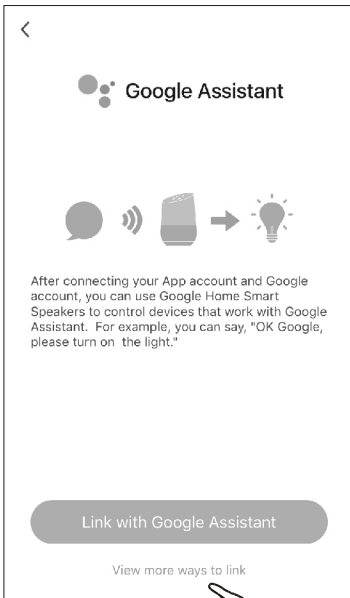
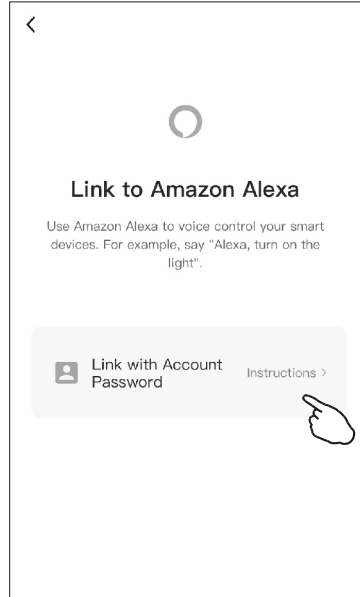
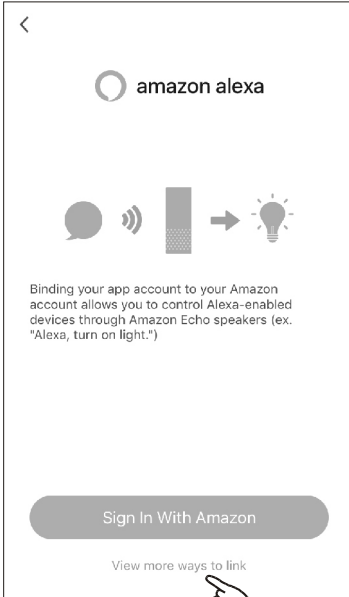
Get some help if you meet some problems. And you can report the issues to helpdesk.



Message about Alarms, Home, Notifications

Air conditioner control

Voice control instructions



Notice

1. Images and functions mentioned in this manual are for reference only and may differ to the model.
Please refer to your actual product and app.
2. Smart air conditioner app can be altered without notice for quality improvement and also be deleted depending on the circumstances of manufacturing firms .
3. In case Wi-Fi signal strength is weakened, smart app may be disconnected. Ensure the unit is positioned within range of the wireless router
4. DHCP server function should be activated for wireless router.
5. The internet connection may fail because of a firewall problem. In this case, contact your internet service provider.
6. For smart phone system security and network setting, ensure smart air conditioner app is marked as a “Trusted” app for firmware updates.

Trouble Shooting

Description	Analysis of cause
Air conditioner can't be configured successfully	<ol style="list-style-type: none">1. Check the mobile connected WLAN router SSID and password is correct;2. Check whether there are additional settings of WLAN router as shown below.<ol style="list-style-type: none">1) Firewall by router itself or by PC2) MAC address filtering3) Hidden SSID4) DHCP server <p>Reboot WLAN router, mobile device and air conditioner (WLAN module) and connect air conditioner by CF mode again. Before rebooting, check nobody has already connected to same air conditioner.</p>
Mobile can't control air conditioner	<ol style="list-style-type: none">1. When air conditioner (WLAN module) is rebooted and app displays Device remove, ignoring this confirmation will lead to mobile device losing control permission of the air conditioner. You will need to connect the air conditioner by CF mode again.2. In case of power failure, mobile device will lose control permission of air conditioner for 3 minutes after power failure. (Notification will now show up on the mobile device.) If you cannot control the app (air conditioner) even after power restored, you will need to connect the air conditioner by CF mode again.
Mobile can't find air conditioner	<ol style="list-style-type: none">1. Smart Life App display Air conditioner Device offline. Please check the following conditions.<ol style="list-style-type: none">1) The air conditioner has been reconfigured.2) Air conditioner out of power.3) Router out of power.4) Air conditioner can't connect to router.5) Air conditioner can't connect to network through the router.6) Mobile device can't connect to network.7) After adding the device, it disappears in device list . <p>Hold and slide down to refresh the device list. If it has no change, shut down the app and start again.</p>



For Inquiries, Please Contact:

Kogan Australia Pty Ltd
139 GLADSTONE STREET SOUTH MELBOURNE, VIC 3205 AUSTRALIA
<https://help.kogan.com/>

Imported/Distributed by Kogan Australia Pty Ltd
Licensed by HYUNDAI Corporation Holdings, Korea