

# F7

## Quick user guide



- This device is an LTE single-antenna device, suitable for application scenarios where the data transmission rate requirements are low.
- Please read this manual carefully before using the product and keep it safe for future reference.

# 1. Introduction

Thank you for choosing our intelligent mobile handheld terminal. We hope our product can contribute to your efficient work. Before using this device, please read this manual carefully and keep it safe for future reference. You can also visit our official website for the latest information.

## 1) Overview

This manual introduces the installation and basic operation of the product.

## 2) Safety Precautions

### Danger3

- During installation and use of the device, you must strictly comply with national and regional electrical safety regulations.
- Avoid strong magnetic environments during use.
- Charge the device as soon as possible before the battery is completely drained. Do not use damaged charging equipment.
- Use a matching charger for charging. Using an incompatible charger may damage the device.
- The battery is flammable and explosive; do not disassemble, squeeze, impact, or perform any destructive operations on the battery. Do not place the battery in a high-temperature environment.
- If the battery emits an odor, becomes hot, changes color, deforms, or leaks during use or storage, immediately remove it from the charger or device and

stop using it.

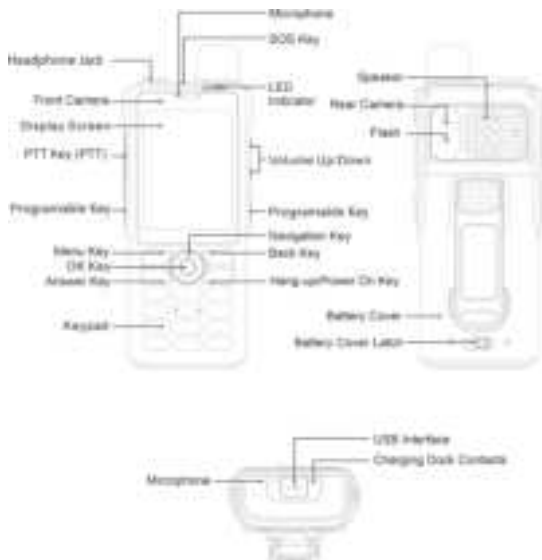
- Do not direct the scanner head at the eyes.
- Do not dismantle the device by yourself. If there is a fault, please consult the device maintenance personnel.

### **3) Notice**

- Avoid blocking the charging interface with debris.
- Avoid scratching the device with sharp objects.
- Connecting the device to the internet may pose cybersecurity risks, so please protect your personal information and data. If you discover potential security issues, please contact us immediately.
- You are responsible for properly configuring all passwords and other security settings and securely managing your username and password.

## 2. Product Introduction

### Appearance and Function Description

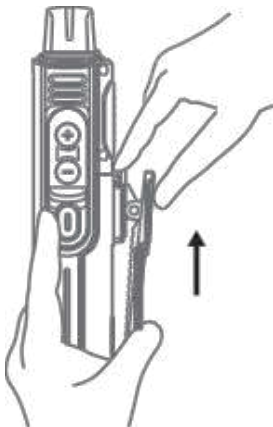


### 3. Quick Start Guide

#### Installation

##### 1) Removing the Back Clip

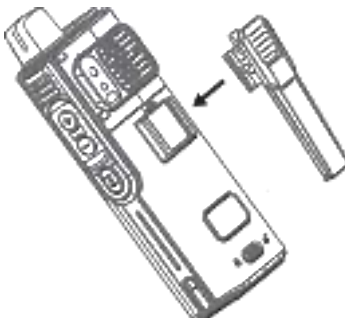
To remove the back clip, pry the top of the back clip bracket and push it upward as a whole.



Removing the Back Clip

## 2) Install the back clip

Align the gap in the middle of the back clip bracket with the device's back clip buckle and press it tightly. Then push the back clip down until you hear a "click".



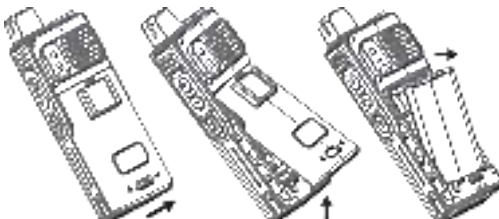
Install the back clip

### **Notice:**

Please follow the illustrated instructions to install and remove the back clip. Do not pull forcefully to avoid damaging the device.

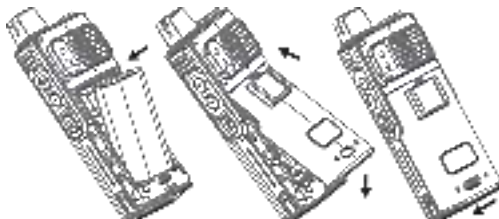
### 3) Removing the Battery

- 1) Hold the battery release latch and slide it to the right until you hear a "click," then open the battery cover from the bottom side of the device.
- 2) Remove the battery from the top hand position.



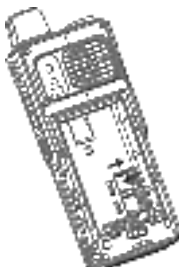
### 4) Installing the battery

- 1) Align the battery with the battery compartment and place it from the bottom up.
- 2) Align the battery cover with the slots and press it down until you hear a "click." Then, press the battery cover and slide the latch to the left to secure it.

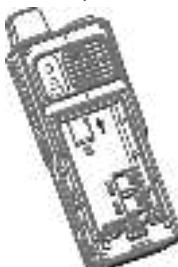


## 5) Install SMI card & TF card

Open the metal plate of the device's SIM card slot, put the SIM card into the slot and cover the metal plate. Put the



Install SIMCard



Install TF card

TF card into the slot and push it up.

### Notice:

- 1) This device only supports Nano-SIM card.
- 2) Do not use non-standard, manually cut, or incorrect type SIM cards, as they may damage the card slot.

## 6) Charging

Use the dedicated Type-C and DC ports in the gift box to charge; during charging, the breathing light on the LED indicator will flash red, and when fully charged, the breathing light will turn green and stay on.





## **4.BATTERY STORAGE RECOMMENDATIONS**

- 1) New batteries that will be stored should be charged to greater than 50% (but less than 100%) state of charge within 1 month of receipt. Every 6 months, batteries must be recharged to greater than 50% state of charge.
- 2) Batteries removed from service for storage should be charged to greater than 50% state of charge. Every 6 months, batteries must be recharged to greater than 50% state of charge.
- 3) Do not store batteries attached to radios or host devices. This will minimize current drain on the battery.

### FCC Statement

This device complies with Part 15 of the FCC rules. Operation is subject to the following two conditions: 1) this device may not cause harmful interference, and 2) this device must accept any interference received, including interference that may cause undesired operation.

Note: This equipment has been tested and found to comply with the limits for a Class B digital device, pursuant to part 15 of the FCC Rules. These limits are designed to provide reasonable protection against harmful interference in a residential installation. This equipment generates uses and can radiate radio frequency energy and, if not installed and used in accordance with the instructions, may cause harmful interference to radio communications. However, there is no guarantee that interference will not occur in particular installation. If this equipment does cause harmful interference to radio or television reception, which can be determined by turning the equipment off and on, the user is encouraged to try to correct the interference by one or more of the following measures:

- Reorient or relocate the receiving antenna.
- Increase the separation between the equipment and receiver.
- Connect the equipment into an outlet on a circuit different from that to which the receiver is connected.
- Consult the dealer or an experienced radio/TV technician for help.

Changes or modifications not expressly approved by the party responsible for compliance could void the user's authority to operate the equipment.

### RF Exposure Statement

SAR tests are conducted using standard operating positions according standards with the device transmitting at its highest certified power level in all tested frequency bands, although the SAR is determined at the highest certified power level, the actual SAR level of the device while operating can be well below the maximum value.

This model product has been tested and meets the RF exposure guidelines with the test distance 0mm for head and 5mm for body worn. The highest SAR<sub>1g</sub> value is 0.528 W/Kg for head and 0.590 W/Kg for body worn. The use of belt clips, holsters and similar accessories should not contain metallic components in its assembly. The use of accessories that do not satisfy these requirements may not comply with RF exposure requirements, and should be avoided