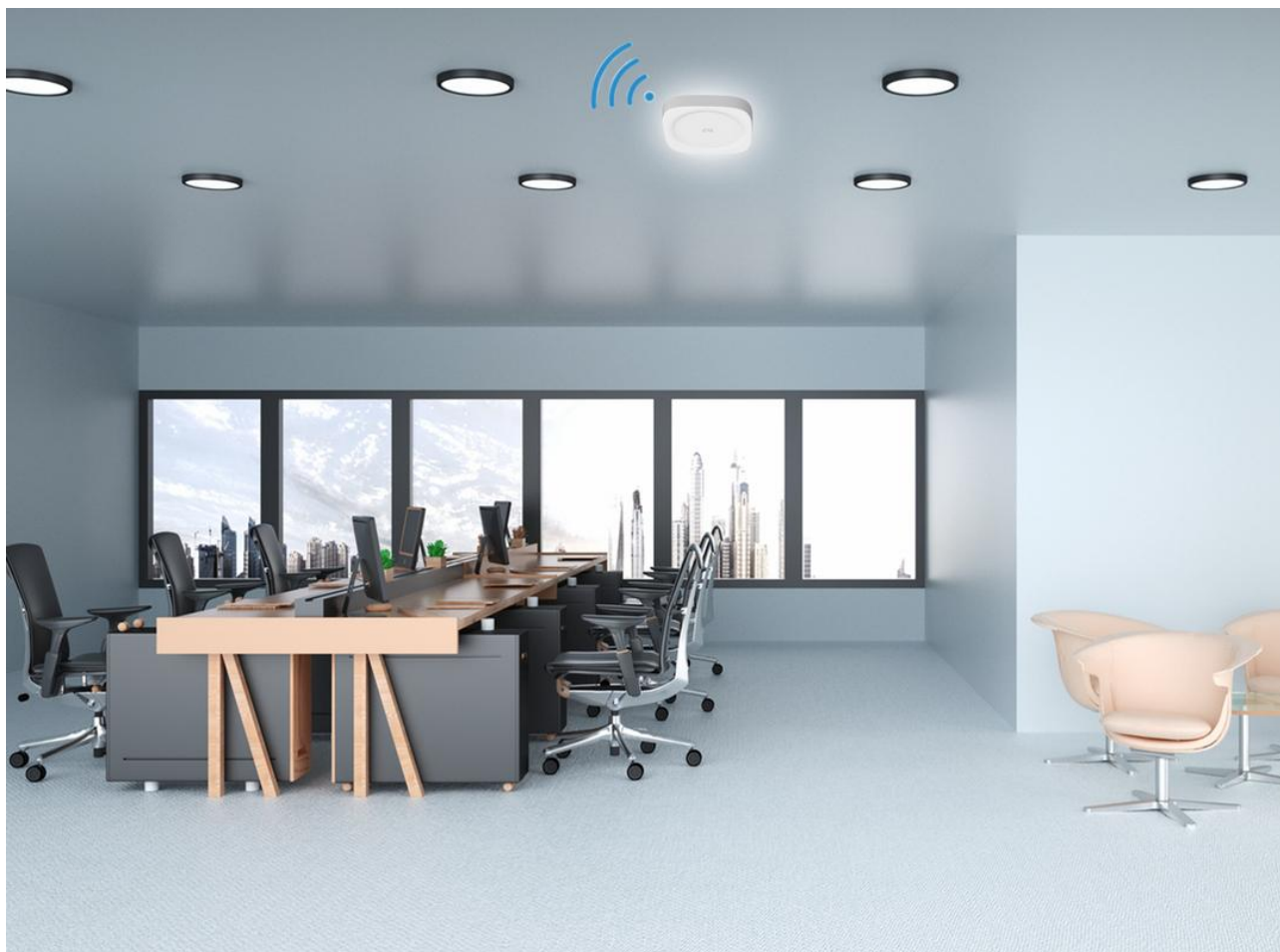


ZTE FTTR-B

All-optical Mesh Wi-Fi for SME*

**SME: Small and Micro Enterprise*



Ultimate All-optical Mesh Wi-Fi, Experiencing the Subscribed Bandwidth



All-optical



In-house Chip



Wi-Fi 6



EasyMesh



Flexible Deployment

FTTR-B (Fiber To The Room for Business) is an all-optical networking solution for enterprises combining optical fibers, photoelectric composite cables, and Wi-Fi 6. It provides ultimate mesh network experience, and solves the bottleneck of internal enterprise networks.



Why Do SME Networks Need to Be Upgraded?

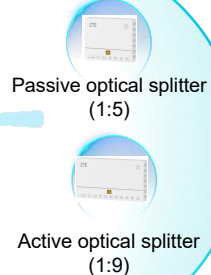
Traditional SME networks are complicated and has many problems. For example, it is hard to remotely manage the Wi-Fi networking, there is no standard of network deployment and operation, there is no guarantee for network performance, and the high network construction cost leads to quick upgrade of network cables.

FTTR-B provides SMEs an all-optical LAN with rapid deployment, extreme experience, and simplified O&M, facilitating the digital transformation of SMEs.



FTTR-B Helps Speed Up SME Intranets

ZTE FTTR uses the all-optical gateway for home networking over optical fibers. It supports the expansion to one main ONT +32 room ONTs, and works with the self-developed intelligent roaming algorithm to achieve one-network coverage and millisecond-level intelligent roaming throughout the home.



Desktop AP



Ceiling-mounted AP



Cloud meeting



Cloud storage



AI identification

✓ Multi-mode main ONT, fully matching system-side access

✓ Flexible power supply, reducing installation and deployment complexity
✓ 32 room ONTs can be expanded

✓ Multi-form room ONT design
✓ Perfect adaption to deployment requirements



Abundant Application Scenarios



Multi-storey office buildings with multiple small and micro enterprises



Large flat-storey buildings for commercial training and conference hall



Small hotels



Street stores such as cafe houses, restaurants, and bars



All-Optical Transmission Media Eliminates Physical Bottlenecks

Network upgrade

- Ceiling-mounted room ONT with POF
- Applicable to various scenarios
- Photoelectric composite cables supply power conveniently



Ultra-gigabit capability meets future requirements

All-optical Wi-Fi 6 with 2.5GE LAN port, helping to achieve 2Gbps+ services.



1+32 extends coverage and multi-device access

Support 32 APs and 300 STAs concurrently.



Millisecond smart roaming provides better experience

Seamless roaming guarantees high-quality networks and reduces complaints.



Intelligent management platform reduces OPEX

App for easy operation by users, SCP for intelligent analysis by operators.

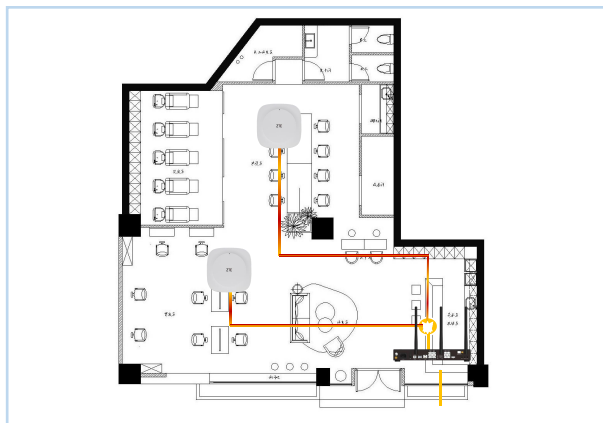




FTTR-B Network Design Solution for Typical Scenarios

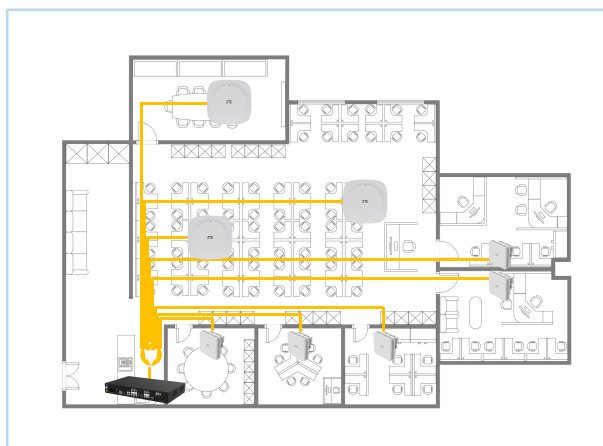
Home-like: independent compartment, area < 300m²

	Feature
Scenario	Shops, hotels, restaurants, apartments
Service Requirement	Mainly Internet requirement, as well as video surveillance, payment, VOIP, IPTV
Network Requirement	Broadband access, seamless Wi-Fi coverage, fast network speed, excellent experience
Product	1 main ONT+1~32 desktop room ONTs+1-4 passive optical splitter



Enterprise office: open-plan office, area < 1000m² per floor

	Feature
Scenario	Commercial buildings, SOHO, commercial training organization, commercial training and conference hall
Service Requirement	Massive Wi-Fi, large file transfer and video conference
Network Requirement	Enterprise security and intranet access
Product	1 main ONT+5~32 ceiling-mounted room ONTs+1~4 active optical splitter (POF)



* A maximum of 1: 32 optical splitting is supported



ZTE FTTR-B Series Products

Main ONT



G100A-C4
XGS-PON Access
1xGPON
1x2.5GE(WAN/LAN)
3xGE, 1xFXS, 1xUSB
AX3000



G100S-C4
GPON Access
1xGPON
1x2.5GE(WAN/LAN)
3xGE, 1xFXS, 1xUSB
AX3000

Room ONT



G1632
GPON Access
2GE+1xFXS, 1xUSB
HDMI 2.1+AV+IR
BLE 5.0+AX3000



G1660G
GPON Access
2GE+AX3000
POF/DC



G1611
GPON Access
4xGE+1xFXS, 1xUSB
AX3000



G1015
GPON Access
2.5GE

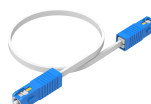
ODN



Passive optical
splitter (1:5)



Active optical
splitter (1:9)



Photoelectric
composite cable



Photoelectric
composite connector