



Questions about using your new 2-Way FlexBrew® Coffee Maker?

Just choose an option below:

OPTION

1

Read the **Quick Start Guide** located on both sides of this card for fast, easy reference to using your new 2-Way FlexBrew® Coffee Maker.

OPTION

2

Call toll-free **1-800-851-8900** to talk with a customer service representative to help you get started.

BEFORE FIRST USE: Wash all removable parts in hot, soapy water. Rinse and dry. Brew one cycle with water on each side and discard water.

QUICK START GUIDE



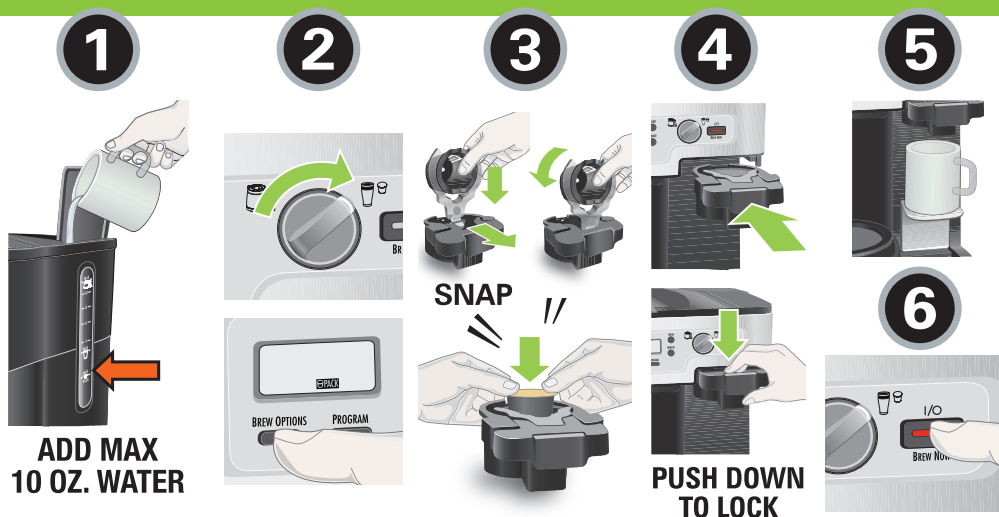
WHEN USING
CARAFE



QUICK START GUIDE



WHEN BREWING SINGLE-SERVE PACKS



ERR Message



DO NOT use more than 10 oz. (296 ml) of water for single-serve pack or 14 oz. (414 ml) for grounds. Too much water causes ERR message and long beep. SOLUTION: Place carafe on warming plate. Turn brew selector dial to Carafe (☕). Press I/O button to remove water. Turn brew selector dial to single-serve side (☕). Add correct amount of water to water reservoir. Start brew process.



WHEN BREWING GROUND COFFEE

